



HOMWOOD PATRIOT PARK POOL



HOMWOOD PARKS AND RECREATION;
 HOMWOOD, AL



OWNER
 HOMWOOD PARKS AND RECREATION
 1632 OXNOR ROAD
 HOMWOOD, AL 35209
 205-322-5704
 ATTN: BERNLEY SQUIRES

ARCHITECT
 DAVIS ARCHITECTS, INC.
 120 23RD STREET SOUTH
 BIRMINGHAM, AL 35233
 205-322-7482
 ATTN: JIM HARTSELL

LANDSCAPE ARCHITECT
 HNP
 1914 28TH AVE S
 BIRMINGHAM, AL 35209
 205-324-4447
 ATTN: TOMMY HOLCOMBE / ED NORTON

CONSTRUCTION MANAGER
 BL HARBERT
 820 SHADES CREEK PARKWAY, SUITE 3000
 BIRMINGHAM, AL 35209
 205-802-2800
 ATTN: JOHN HANSON

STRUCTURAL ENGINEER
 LBVD INC.
 716 SOUTH 30TH STREET
 BIRMINGHAM, AL 35233
 205-251-4500
 ATTN: WIN BISHOP / BRAD CHRISTOPHER

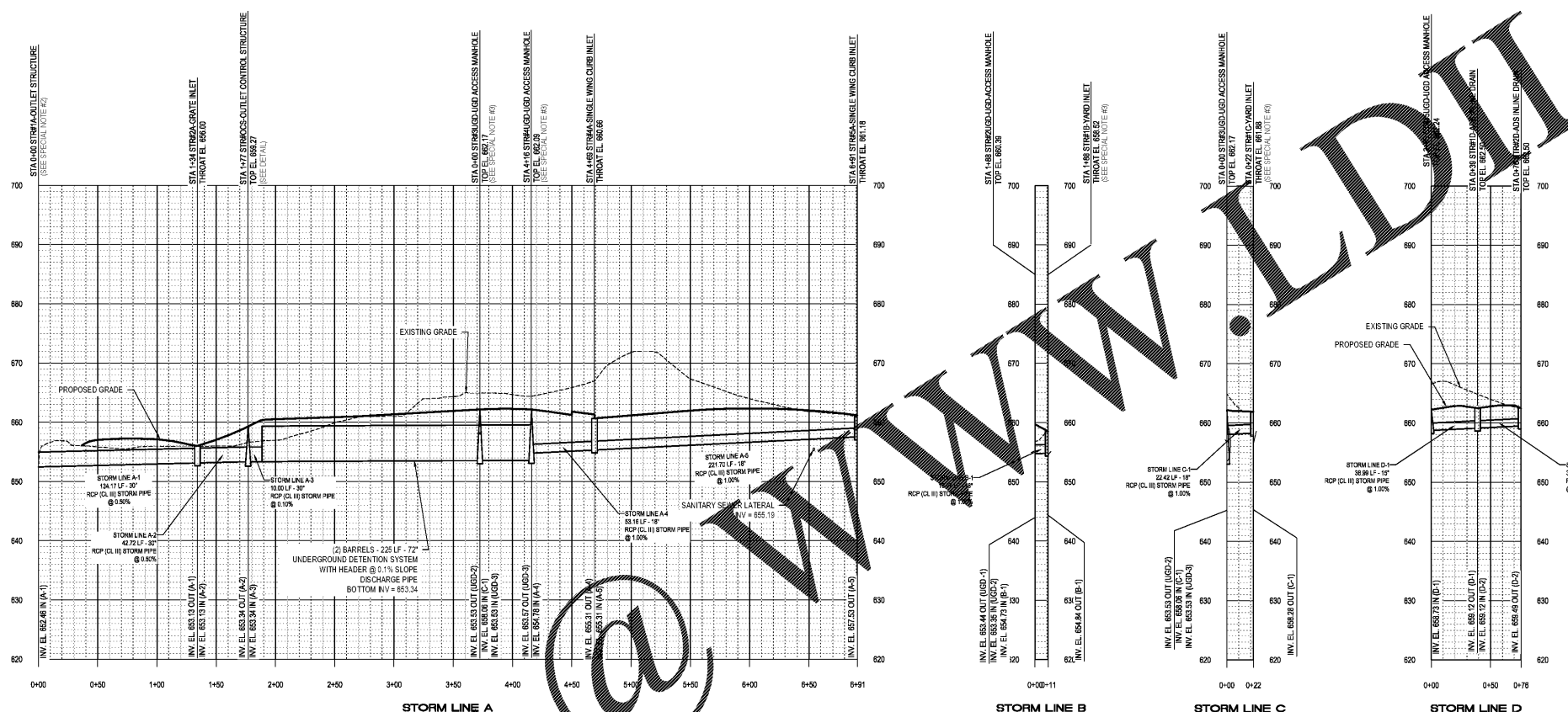
MECHANICAL ENGINEER
 WHITAKER & RAWSON
 3332 OLD MONTGOMERY HIGHWAY
 SUITE 103
 BIRMINGHAM, AL 35209
 205-470-6001
 ATTN: DAN WHITAKER, ERIC HARTWIG, AND MARK D'ANDREA

CIVIL ENGINEER
 LBVD INC.
 716 SOUTH 30TH STREET
 BIRMINGHAM, AL 35233
 205-251-4500
 ATTN: CURTIS EATMAN AND BRIAN HATCHER

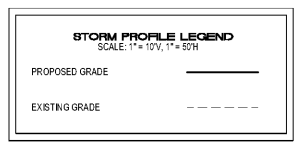
ELECTRICAL ENGINEER
 FISHER ARNOLD
 1507 ALEX DR.
 SUITE 101
 BIRMINGHAM, AL 35210
 205-853-7033
 ATTN: JOSEPH KUMU AND NICHOLAS BROWN

PLUMBING / FIRE PROTECTION ENGINEER
 EDMONDS ENGINEERING
 2 RIVERCHASE OFFICE PLAZA
 SUITE 205
 BIRMINGHAM, AL 35244
 205-988-2069
 ATTN: CAROL JOHNSON

POOL CONSULTANT
 COUNSILMAN HUNSAKE
 10733 SUNSET OFFICE DRIVE
 SUITE 400
 ST. LOUIS, MO 63127
 314-894-1245
 ATTN: JEFF WOODRFT



- SPECIAL NOTES:**
- SEE SHEET C0.1 FOR ALL APPLICABLE STORM DRAINAGE NOTES
 - CONTRACTOR TO CORE STORM DRAINAGE PIPE HOLE INTO EXISTING CONCRETE DITCH WALL AND GROUT PIPE JOINT TO ENSURE A WATER TIGHT CONNECTION
 - SEE SHEET C0.1 FOR BID ALTERNATE STRUCTURE INFORMATION WHICH WILL VARY FROM BASE BID STRUCTURE INFORMATION



REV	DATE	DESCRIPTION

DATE: OCTOBER 08, 2017

SCALE: 100% CONSTRUCTION DOCUMENTS

PROJECT NO. 3822

SHEET TITLE: STORM SEWER PROFILES

DRAWING NO.

C2.1

Order Plans

A1 STORM SEWER PROFILES

1 / 10.01 SCALE: 1" = 50', 1" = 10'