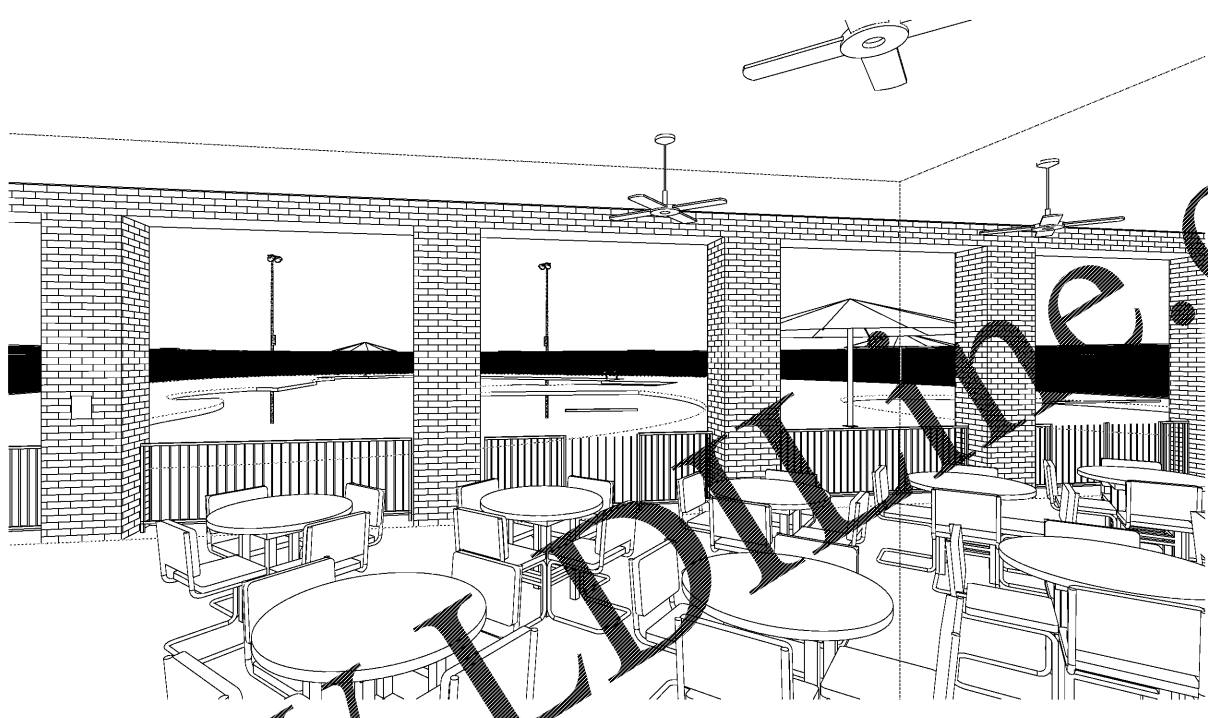
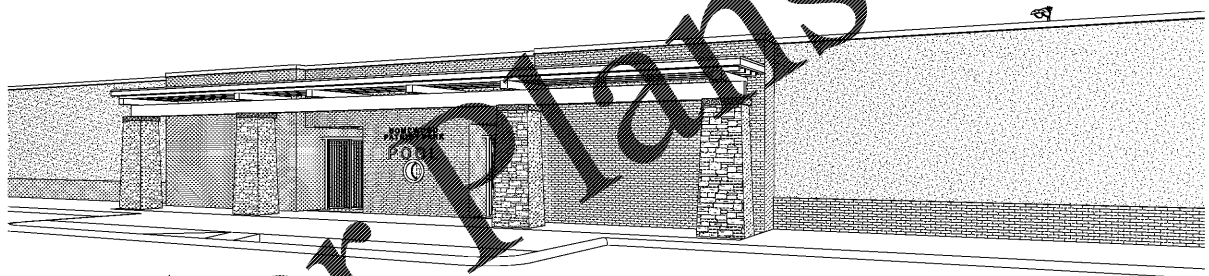


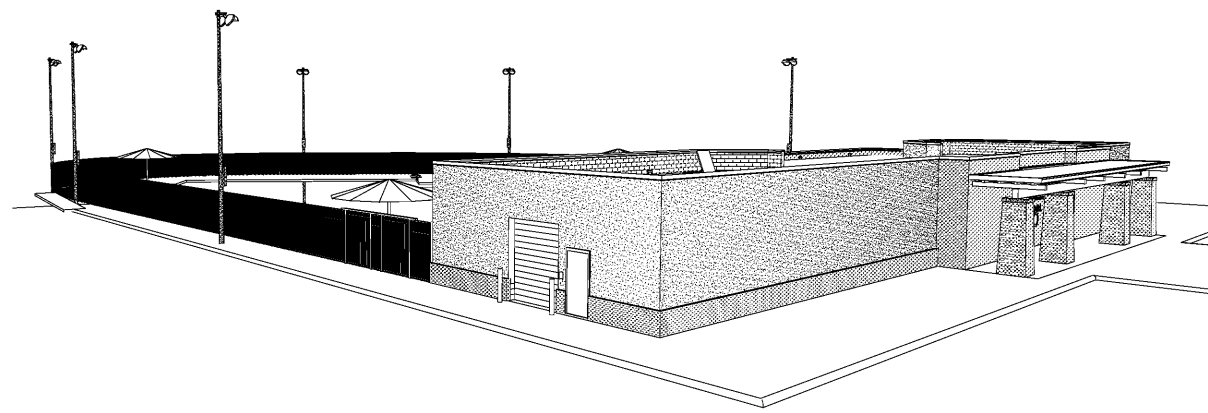
H1 PERSPECTIVE 3  
SCALE: NTS



H10 PERSPECTIVE 4  
SCALE: NTS



A1 PERSPECTIVE 1  
SCALE: NTS



A10 PERSPECTIVE 2  
SCALE: NTS

STATE OF ALABAMA  
2413  
HOMWOOD PATRICK PARK  
POOL  
HOMWOOD PARKS AND RECREATION

HOMWOOD PARKS AND RECREATION; HOMWOOD, AL

DAVIS ARCHITECTS

OWNER  
HOMWOOD PARKS AND RECREATION  
1632 OAKWOOD ROAD  
HOMWOOD, AL 35209  
205-322-6704  
ATTN: BERKLEY SQUIRES

ARCHITECT  
DAVIS ARCHITECTS, INC.  
120 23RD STREET SOUTH  
BIRMINGHAM, AL 35233  
205-322-7482  
ATTN: JIM HARTSELL

LANDSCAPE ARCHITECT  
HNP  
1914 28TH AVE S  
BIRMINGHAM, AL 35209  
205-324-4447  
ATTN: TOMMY HOLCOMBE / ED NORTON

CONSTRUCTION MANAGER  
BL HARBERT  
820 SHADES CREEK PARKWAY, SUITE 3000  
BIRMINGHAM, AL 35209  
205-982-2900  
ATTN: JOHN HANSON

STRUCTURAL ENGINEER  
LEYD INC.  
716 SOUTH 30TH STREET  
BIRMINGHAM, AL 35233  
205-251-4500  
ATTN: WIM BISHOP / BRAD CHRISTOPHER

MECHANICAL ENGINEER  
WHITAKER & RAWSON  
3332 OLD MONTGOMERY HIGHWAY  
SUITE 103  
BIRMINGHAM, AL 35209  
205-949-5128  
ATTN: MARK D'ANDREA AND DAN WHITAKER

CIVIL ENGINEER  
LEYD INC.  
716 SOUTH 30TH STREET  
BIRMINGHAM, AL 35233  
205-251-4500  
ATTN: CURTIS EATMAN AND BRIAN HATCHER

ELECTRICAL ENGINEER  
FISHER ARNOLD  
1507 ALEX DR.  
SUITE 101  
BIRMINGHAM, AL 35210  
205-833-7633  
ATTN: JOSEPH KUMU AND NICHOLAS BROWN

PLUMBING / FIRE PROTECTION ENGINEER  
WHITAKER & RAWSON  
3332 OLD MONTGOMERY HIGHWAY  
SUITE 103  
BIRMINGHAM, AL 35209  
205-949-5107  
ATTN: ERIK HARTWIG

POOL CONSULTANT  
COUNSILMAN HUNSAKE  
10733 SUNSET OFFICE DRIVE  
SUITE 400  
ST. LOUIS, MO 63127  
314-894-1245  
ATTN: JEFF NODORFT

REV	DATE	DESCRIPTION

DATE: OCTOBER 6, 2017  
PROJECT: 100% CONSTRUCTION SET  
DRAWING NO: 3822

RENDERING VIEWS

DRAWING NO: G1.4

Order Plans @ [WWW.LDW.COM](http://WWW.LDW.COM)