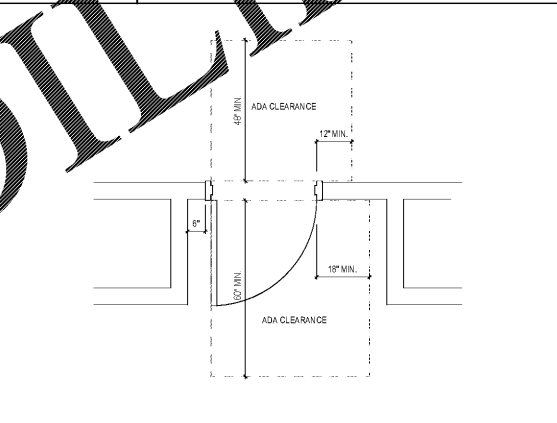
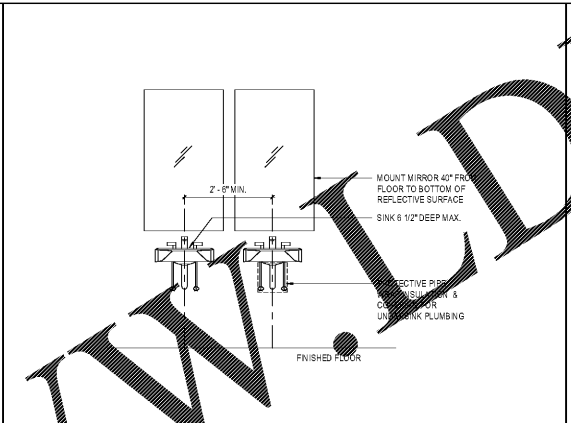
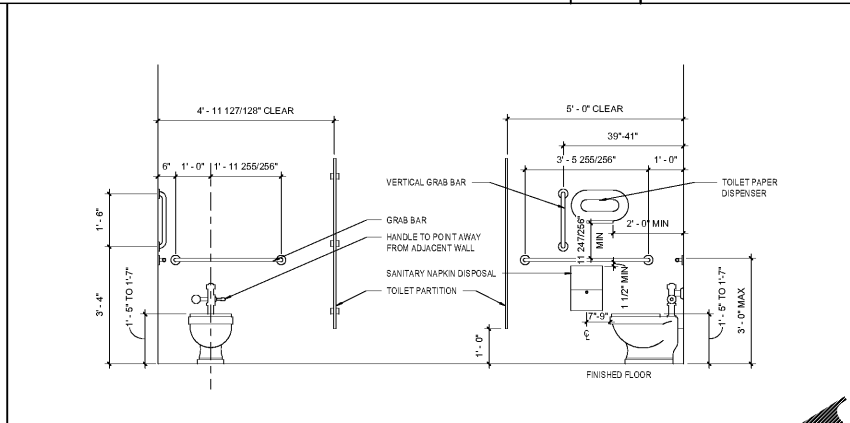
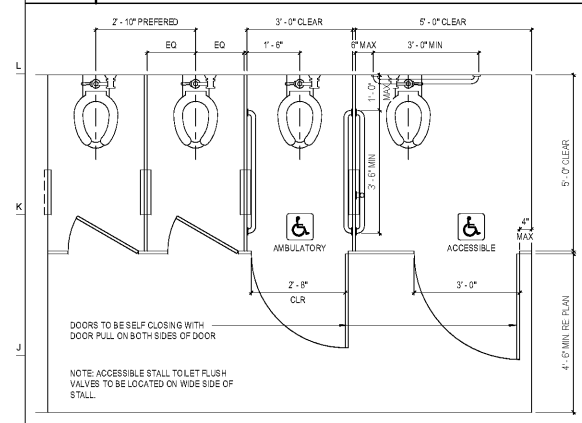


NOTE: DIAGRAMS ON THIS SHEET REPRESENT MINIMUM CLEARANCE REQUIREMENTS. REFER TO ARCHITECTURAL DRAWINGS FOR SPECIFIC REQUIREMENTS. NOTIFY ARCHITECT OF ANY CONDITIONS WHICH DO NOT CONFORM TO MINIMUM CLEARANCE REQUIREMENTS SHOWN HERE.

NOTE: TYPICAL TOILET ACCESSORIES LISTED IN SCHEDULE ARE TO BE PROVIDED IN ALL RESTROOMS IN QUANTITIES RELATIVE TO TOTAL NUMBER OF STALLS. URINALS SHOWN IN FLOOR PLANS FOR IN EACH RESTROOM.

L1 STANDARD - MISC MOUNTING HEIGHTS  
SCALE: 1/2" = 1'-0"

L9 STANDARD - ADA MOUNTING HEIGHTS  
SCALE: 1/2" = 1'-0"

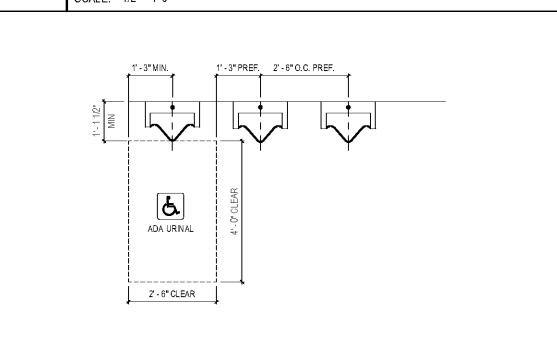
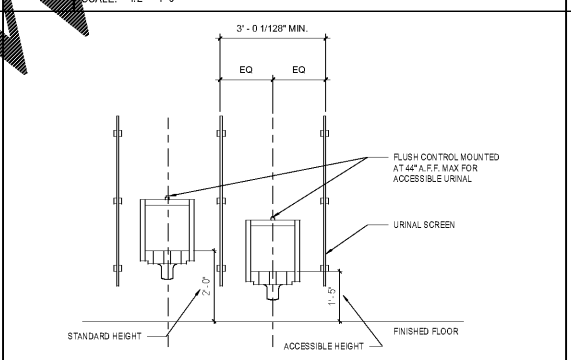
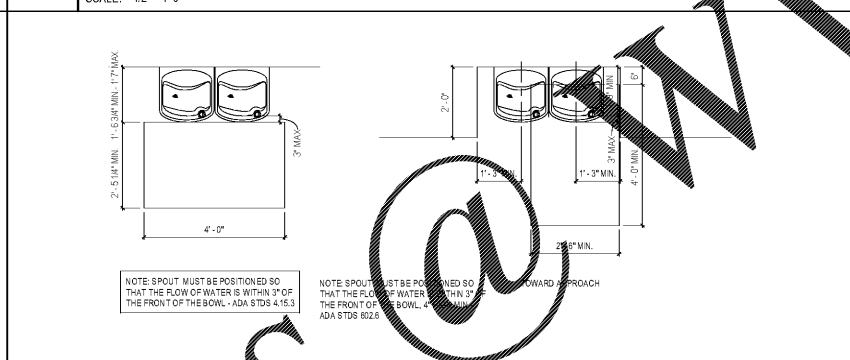
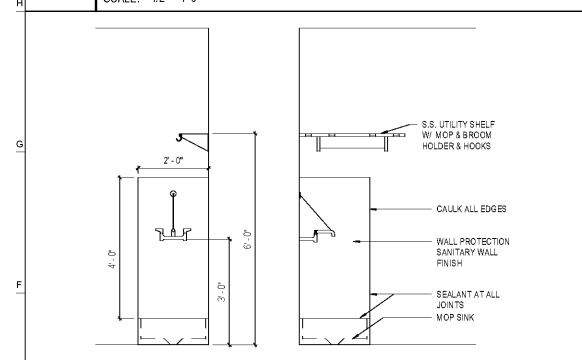


H1 STANDARD - MINIMUM TOILET DIMENSIONS  
SCALE: 1/2" = 1'-0"

H5 STANDARD - ADA TOILET STALL DIMENSIONS  
SCALE: 1/2" = 1'-0"

H11 STANDARD - SINK DIMENSIONS  
SCALE: 1/2" = 1'-0"

H15 STANDARD - SWINGING DOOR CLEARANCES  
SCALE: 1/2" = 1'-0"

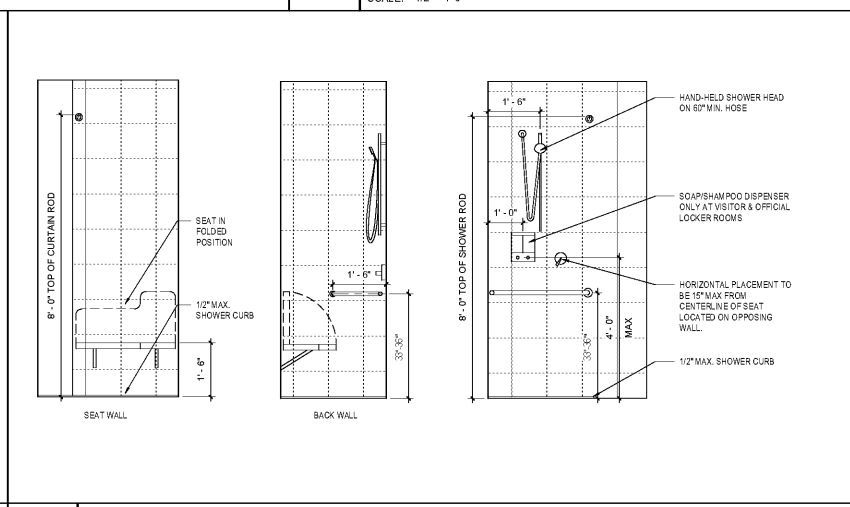
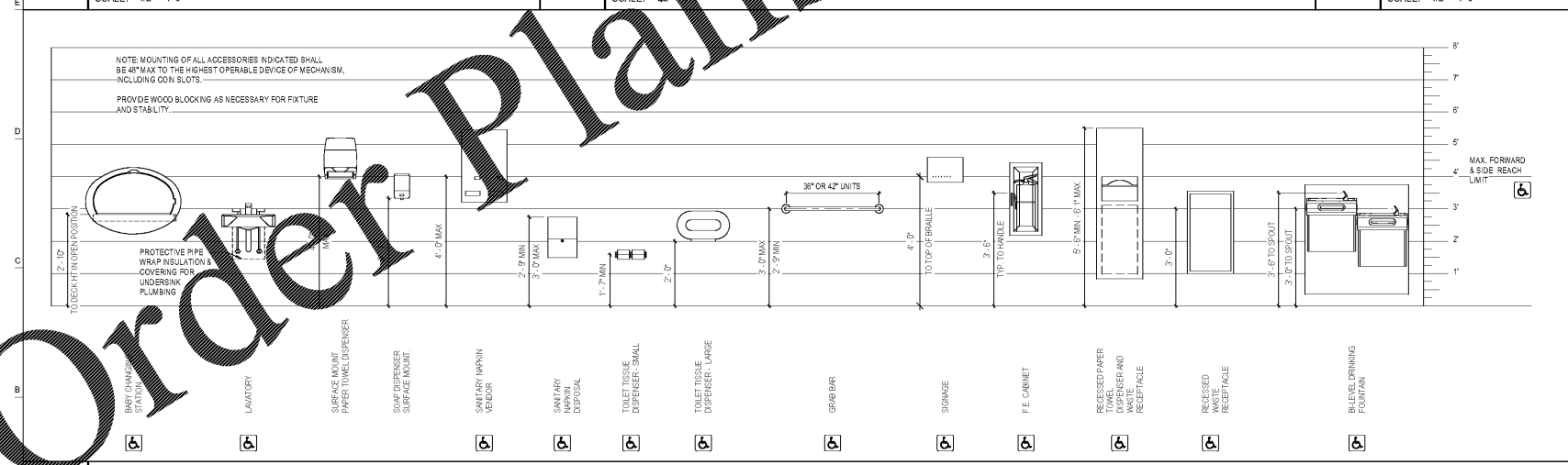


E1 STANDARD - CUSTODIAL CLOSET  
SCALE: 1/2" = 1'-0"

E5 STANDARD - WATER FOUNTAIN DIMENSIONS  
SCALE: 1/2" = 1'-0"

E11 STANDARD - URINAL MOUNTING HEIGHTS  
SCALE: 1/2" = 1'-0"

E15 STANDARD - MIN. URINAL DIMENSIONS  
SCALE: 1/2" = 1'-0"



A1 STANDARD - TYP FIXTURE MOUNTING HEIGHTS  
SCALE: 1/2" = 1'-0"

A13 STANDARD - ADA SHOWER  
SCALE: 1/2" = 1'-0"

STATE OF ALABAMA  
REGISTERED PROFESSIONAL ARCHITECTS  
2413

**HOMWOOD PATRIOT PARK POOL**

**HOMWOOD PARKS & RECREATION**

HOMWOOD PARKS AND RECREATION; HOMWOOD, AL

DAVIS ARCHITECTS

OWNER: HOMWOOD PARKS AND RECREATION  
1632 OAKMOOR ROAD, HOMWOOD, AL 35209  
205-322-6704  
ATTN: BERKLEY SQUIRES

ARCHITECT: DAVIS ARCHITECTS, INC.  
120 23RD STREET SOUTH, BRIMMINGHAM, AL 35233  
205-322-7482  
ATTN: JIM HARTSELL

LANDSCAPE ARCHITECT: HNP  
1914 28TH AVE S, BRIMMINGHAM, AL 35209  
205-324-4447  
ATTN: TOMMY HOLCOMBE / ED NORTON

CONSTRUCTION MANAGER: BL HARBERT  
820 SHADES CREEK PARKWAY, SUITE 3000, BRIMMINGHAM, AL 35209  
205-982-2900  
ATTN: JOHN HANSON

STRUCTURAL ENGINEER: LEYD INC.  
716 SOUTH 30TH STREET, BRIMMINGHAM, AL 35233  
205-251-4500  
ATTN: WIM BISHOP / BRAD CHRISTOPHER

MECHANICAL ENGINEER: WHITAKER & RAWSON  
3332 OLD MONTGOMERY HIGHWAY, SUITE 103, BRIMMINGHAM, AL 35209  
205-985-5128  
ATTN: MARK D'ANDREA AND DAN WHITAKER

CIVIL ENGINEER: LEYD INC.  
716 SOUTH 30TH STREET, BRIMMINGHAM, AL 35233  
205-251-4500  
ATTN: CURTIS EATMAN AND BRIAN HATCHER

ELECTRICAL ENGINEER: FISHER ARNOLD  
1507 ALEX DR., SUITE 101, BRIMMINGHAM, AL 35210  
205-833-7033  
ATTN: JOSEPH KUMU AND NICHOLAS BROWN

PLUMBING / FIRE PROTECTION ENGINEER: WHITAKER & RAWSON  
3332 OLD MONTGOMERY HIGHWAY, SUITE 103, BRIMMINGHAM, AL 35209  
205-949-5107  
ATTN: ERIK HARTWIG

POOL CONSULTANT: COUNSLMAN HUNSAKE  
10733 SUNSET OFFICE DRIVE, SUITE 400, ST. LOUIS, MO 63127  
314-894-1245  
ATTN: JEFF NODORFT

| REV | DATE | DESCRIPTION |
|-----|------|-------------|
|     |      |             |
|     |      |             |

DATE: OCTOBER 6, 2017  
PROJECT NO: 100% CONSTRUCTION SET  
PROJECT NO: 3822  
SHEET TITLE: PROJECT STANDARDS  
DRAWING NO:

G1.3