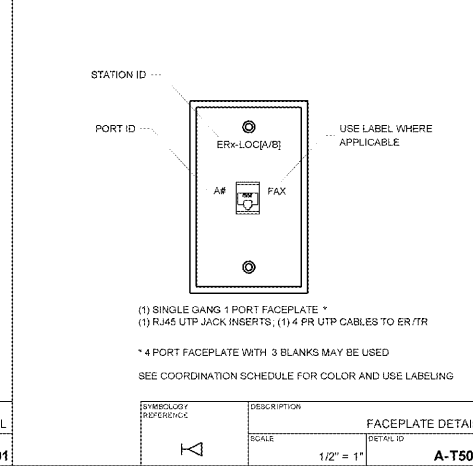
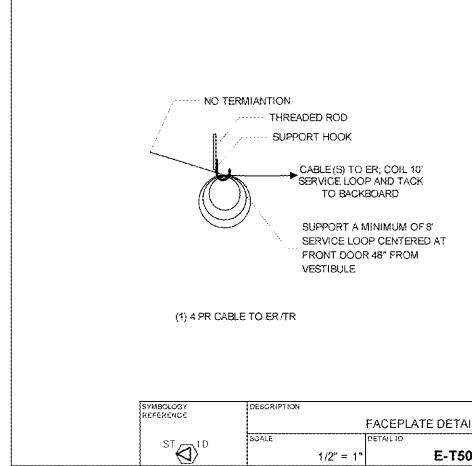
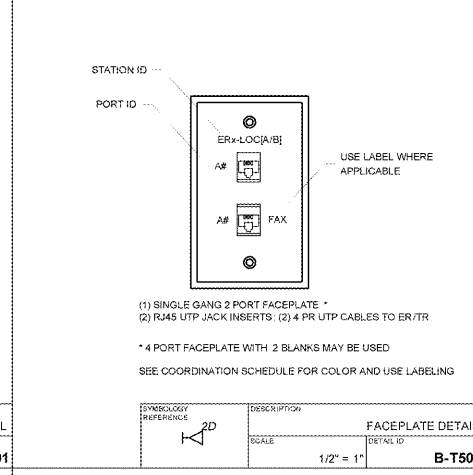
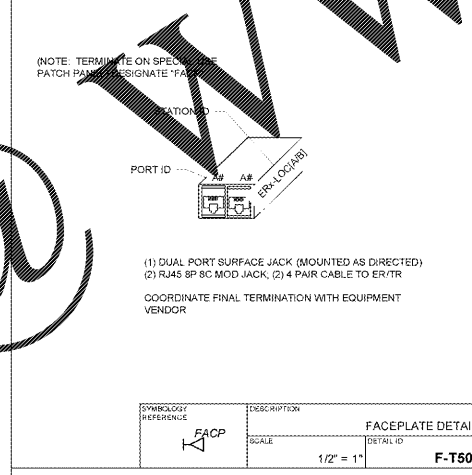
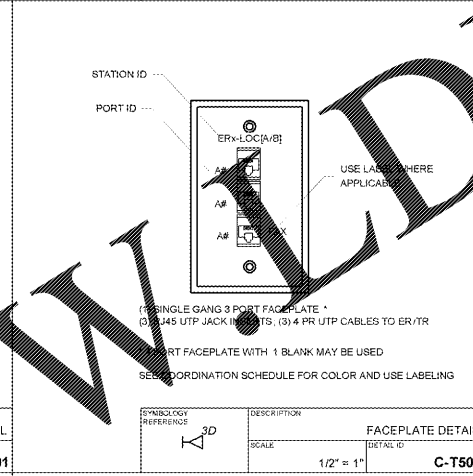
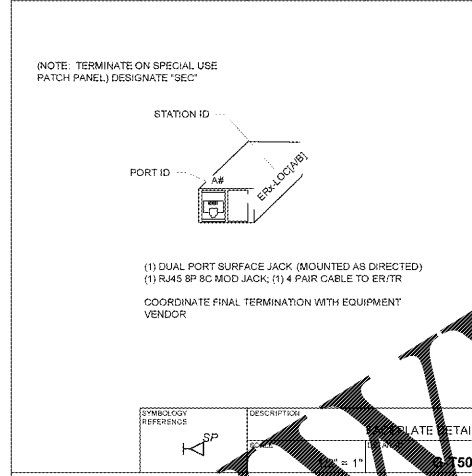
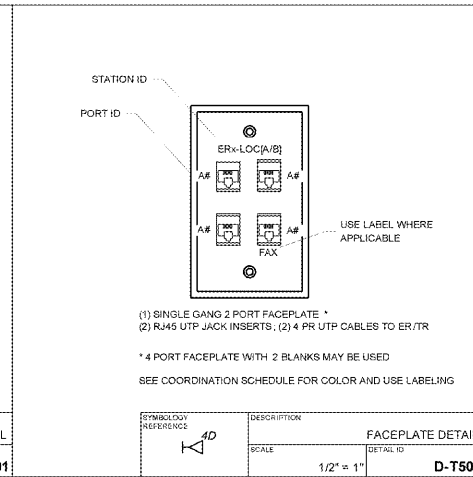
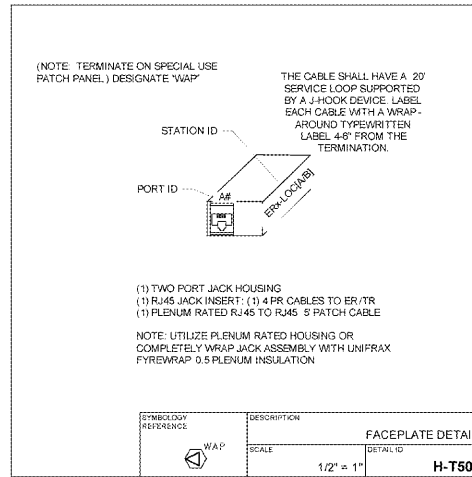


Order Plans @



**WORKSTATION OUTLET NOTES:**

- DETAILS SHOWN ARE DIAGRAMMATIC AND ARE INTENDED TO DEFINE PROJECT REQUIREMENTS. UTILIZE COORDINATION SCHEDULE AND SPECIFICATIONS FOR SPECIFIC COMPONENT INFORMATION.
- OUTLETS MAY REQUIRE SPECIAL MOUNTING. THE FLOORPLANS WILL SHOW THE REQUIRED MOUNTING SUCH AS A FLOORBOX, FURNITURE (WHIP, POKE THROUGH, OR SURFACE RACEWAY).
- DETERMINE THE FINAL FLOOR DEVICE WITH THE ROUGH-IN INSTALLER. COORDINATE THE APPROPRIATE FACEPLATE MOUNTING BASED ON MANUFACTURER, SIZE, AND STYLE OF FLOOR DEVICE.
- OUTLET REQUIREMENTS WHERE POWER/COMMUNICATIONS MUST BE CO-LOCATED, SEPARATION OF THE CABLING SHALL BE REQUIRED.
- WHERE MULTI-COMPARTMENT SURFACE RACEWAY, FLOORBOXES, OR FIRE-RATED POWER ROUGHS ARE REQUIRED - SUBSTITUTE 4-PORT JACK FRAMES AND INTEGRAL FACEPLATE (S) IN PLACE OF THE SINGLE GANG FACEPLATES SHOWN ON THIS DRAWING.
- FILL ALL UNUSED OPENINGS WITH BLANKS WHERE NOT NEEDED.
- SURFACE RACEWAY OUTLET LOCATIONS REQUIRING FOUR (4) OR FEWER PORTS SHALL UTILIZE PLENUM 4 PORT JACK FRAME AND FACEPLATE; BLANKING ANY ADDITIONAL GANGS.
- "CH" DENOTES COUNTER HEIGHT. SYMBOLS WITH THIS SUBSCRIPT "CH" WILL BE AS DETAILED IN THIS SHEET WITH THE ROUGH-IN ALTERED TO ACCOMMODATE COUNTER HEIGHT.

**HORIZONTAL CABLING NOTES:**

- CABLING SHALL BE INSTALLED CONTINUOUSLY AND WITH NO SPLICES.
- COLOR CODING OF CABLING SHALL BE COORDINATED AND APPROVED PRIOR TO PROCUREMENT AND INSTALLATION.
- SPECIAL OUTLET TYPES ARE SHOWN IN THE PROJECT COORDINATION SCHEDULE.
- SPECIAL LAYOUTS MAY VARY. FLOORPLANS WILL SHOW OUTLET REQUIREMENTS; NOT ALL TYPICAL OUTLETS MAY BE USED ON EACH PROJECT.
- CABLES INTENDED TO BE USED FOR VOICE APPLICATIONS SHALL BE IDENTICAL TO THOSE INTENDED FOR DATA APPLICATIONS. CONTINUING TO DIFFERENTIATE THEM AS SEPARATE IS USED TO DOCUMENT THE OWNER'S INTENT TO PROVIDE INFORMATION USED IN THE OVERALL DESIGN.
- ALL CABLES USED FOR VOICE OR DATA SHALL BE TERMINATED ON "HORIZONTAL" PATCH PANELS IN THE CENTER.
- "HORIZONTAL" PATCH PANELS SHALL BE USED IN QUANTITIES NECESSARY TO TERMINATE ALL VOICE AND DATA CABLES IN QUANTITIES AS INDICATED ON THE FLOOR PLAN(S).
- ALL HORIZONTAL CABLES SHALL BE TERMINATED IN ALPHA NUMERICAL ORDER ON EACH PATCH PANEL.
- HORIZONTAL 4 PAIR CABLING IS ALSO UTILIZED FOR PURPOSES OTHER THAN VOICE AND DATA. IN GENERAL THESE CABLES ARE NOT TYPICALLY EASILY ACCESSIBLE TO USERS AND DO NOT HAVE THE SAME PATCHING FREQUENCY. AT MINIMUM THESE CABLES SHALL BE COMBINED IN THE ER OR "SPECIAL USE" PATCH PANELS. SEE SHEETS T-400 TO DETERMINE PROJECT REQUIREMENTS.

PROJECT COORDINATION SCHEDULE - FACEPLATES, CABLES, DEVICES AND INSERTS				
DEVICE DESCRIPTION	COLOR/FINISH			FRAME COLOR
	STYLE	COLOR	FRAME COLOR	
FACEPLATE	STANDARD	WHITE	N/A	
JACKS	DATA BLUE - VOICE/FAX YELLOW			
DEVICE DESCRIPTION	PROJECT SPECIFIC			
	RATING	COLOR	CATEGORY	
HORIZONTAL VOICE AND DATA CABLES	PLENUM RATED	WHITE	CATEGORY 5E	
WIRELESS ACCESS POINT CABLES	PLENUM RATED	WHITE	CATEGORY 6	
LOCATION DESCRIPTION	PROJECT SPECIFIC			
	JACK 1	JACK 2	JACK 3	JACK 4
POINT OF SALE [POS1]	COLOR LABEL	BLUE	BLUE PRT	
POINT OF SALE [POS2]	COLOR LABEL	BLUE	BLUE PRT	
POINT OF SALE [POS3]	COLOR LABEL	BLUE	BLUE PRT	
ELECTRONICS [ELTR1] (PEDESTAL ONE)	COLOR LABEL	BLUE		
ELECTRONICS [ELTR2] (PEDESTAL TWO)	COLOR LABEL	BLUE		
BAIT SHACK [BS1] (LEFT SIDE)	COLOR LABEL	BLUE	BLUE PRT	
BAIT SHACK [BS2] (RIGHT SIDE)	COLOR LABEL	BLUE	BLUE PRT	
ENGINE PARTS [EP1] (CLOSEST TO OFFICE)	COLOR LABEL	BLUE	BLUE PRT	
ENGINE PARTS [EP2]	COLOR LABEL	BLUE		
RECEIVING [REC1]	COLOR LABEL	BLUE	BLUE PRT	
RECEIVING [REC2]	COLOR LABEL	BLUE		
RECEIVING [REC3]	COLOR LABEL	BLUE		
PORT SUPPLY [PS1]	COLOR LABEL	BLUE	BLUE	BLUE
PORT SUPPLY [PS2]	COLOR LABEL	BLUE	BLUE	BLUE
STORE OFFICE A [SOA]	COLOR LABEL	BLUE SVR	BLUE DM	
STORE OFFICE B [SOB]	COLOR LABEL	BLUE WKS	BLUE PRT	YELLOW FAX
STORE OFFICE B [SOC]	COLOR LABEL	BLUE WKS	BLUE PRT	YELLOW FAX

ROBERT F. VANNEY ARCHITECT

3001 CROSBY STREET, STE. 201  
SANT PAUL, MINNESOTA 55101  
TEL: 763.424.4242 FAX: 612.222.3338

consultant  
HALLBERG ENGINEERING  
Mechanical/Electrical Consulting Engineers  
1750 Commerce Court  
White Bear Lake, WI 55110  
(651) 748-1100 • Fax (651) 748-9370

West Marine  
500 Westridge Drive  
Watsonville, California 95076  
p: 831.728.2700 f: 831.761.4220

ISLAND WALK @  
PALM COAST  
250 PALM COAST PKWY NE  
PALM COAST, FL 32137  
STORE #TBD

commission number R17-2777.003

- WM 75% 07/07/2017
- LL Final
- Permit 07/24/2017
- Bidding 10/02/2017

TECHNOLOGY OUTLET REQUIREMENTS

sheet number T501