

ABBREVIATIONS AND DEFINITIONS

Table with 2 columns: ABBREV and DEFINITION. Contains various abbreviations like ADA, AFF, AFG, BFC, CCTV, CH, CLG, CT, EF, ER-xx, EC, FB, OFE, OFCI, OFO, SBB, TAAC, TAHC, TR-xx, TBB, UON, W, WAP, WG.

GENERAL PATHWAYS NOTES:

- 1) ROUGH-IN PATHWAYS SHALL BE CLOSELY REVIEWED AND COORDINATED PRIOR TO INSTALLATION... 2) WHERE CONDUIT IS SHOWN AND/OR SPECIFIED, PROVIDE PULL BOXES SHOWN ON THE DRAWINGS PLUS ADDITIONAL PULL BOXES AS FOLLOWS: a) EVERY 180 DEGREES OF CONDUIT BEND... b) EVERY 100 FEET OF CONDUIT PATH... 3) INSTALLED PULL BOXES AND JUNCTION BOXES SHALL BE IN ACCESSIBLE LOCATIONS... 4) ROUGH-IN REQUIREMENTS INDICATED ON PLANS, ELEVATIONS AND DETAILS TAKE PRECEDENCE OVER VALUES GIVEN ON THE LEGEND... 5) PROVIDE PATHWAYS FOR COMMUNICATIONS AND SECURITY SYSTEMS CABLEING... 6) PROVIDE COVER PLATES FOR DEVICE, JUNCTION AND PULL BOXES... 7) WHERE CONDUITS ARE SPECIFIED "TAAC" (TO ABOVE ACCESSIBLE CEILING)... 8) WHERE DEVICE CONDUITS ARE SPECIFIED "TAHC" (TO ABOVE ACCESSIBLE HALLWAY/CORRIDOR CEILING)... 9) CONDUIT INSTALLER SHALL INSTALL PULL STRINGS IN CONDUITS IMMEDIATELY AFTER INSTALLATION... 10) WHERE A MOUNTING HEIGHT MEASUREMENT IS APPLIED TO A ROUGH-IN THE MEASUREMENT SHALL BE REFERENCED TO THE CENTER OF THE ROUGH-IN DEVICE... 11) ROUGH-IN BOXES SHALL BE INSTALLED FLUSH IN WALLS AND CEILINGS... 12) PATHWAYS SHALL BE INSTALLED CONCEALED MANNER... 13) PROVIDE CODE-COMPLIANT FIRE-STOPPING FOR PATHWAYS THROUGH FIRE-RATED WALLS, FLOORS AND CEILINGS... 14) PROVIDE CONDUITS WITH NYLON END-BUSHINGS... 15) DEVICES DESIGNATED WITH THE "CH" SUBSCRIPT (COUNTER HEIGHT) SHALL BE CLOSELY COORDINATED IN THE FIELD WITH ARCHITECT... 16) DEVICES TO BE INSTALLED AT CASEWORK LOCATIONS SHALL BE CLOSELY COORDINATED WITH THE CASEWORK TO ENSURE FUNCTIONAL CONNECTIVITY... 17) ROUGH-IN SHALL BE CLOSELY COORDINATED TO COMPLEMENT THE INTENDED FURNITURE... 18) MANY COMMUNICATIONS DEVICES ARE INTENDED TO HAVE ADJACENT POWER OR INFORMATIONAL RECEPTACLES... 19) COMMUNICATIONS DEVICE MOUNTING HEIGHTS SHALL BE CONSISTENT WITH THE ELECTRICAL OUTLET MOUNTING HEIGHTS... 20) CONDUITS STUBBED INTO THE CEILING CAVITY SHALL BE MARKED WITH AN INDELIBLE MARKER... 21) LADDER RACK AND OTHER COMMUNICATIONS TECHNIQUE CABLEING PATHWAYS... 22) IN APPLICATIONS WHERE THE DRAWINGS AND/OR SPECIFICATIONS REQUIRE THE USE OF SURFACE BOXES... 23) COORDINATE THE TELEPHONE CONNECTION REQUIREMENTS FOR THE FIRE ALARM CONTROL PANEL... 24) COORDINATE DATA CABLEING AND TERMINATION REQUIREMENTS FOR HVAC BUILDING AUTOMATION... 25) WHERE ACCESSIBLE CEILING IS USED FOR CABLE PATHWAY... 26) WHERE ACCESSIBLE CEILING IS USED FOR CABLE PATHWAY...

DIVISION 27 TECHNOLOGY SPECIFICATIONS:

COORDINATION REFER TO THE DRAWINGS FOR TYPES AND QUANTITIES OF HORIZONTAL CABLES. REVIEW AND COORDINATE THE SIZES, QUANTITY, ROUTING AND SPACING OF PATHWAYS TO ENSURE THEY WILL ADEQUATELY SUPPORT THE WORK OF THIS SECTION. CONFIRM THAT CABLES TO BE INSTALLED WILL NOT EXCEED MAXIMUM FULL CAPACITIES OF RACEWAYS AND SHALL MEET THE MINIMUM REQUIREMENTS OF LOCAL, STATE AND FEDERAL LAWS AND REQUIREMENTS... SUBMITTALS PRIOR TO PURCHASE OR INSTALLATION, PRODUCT APPROVAL SHALL BE REQUIRED... COPPER HORIZONTAL CABLEING SYSTEM DESCRIPTION PROVIDE TIA/EIA-568-C COMPLIANT 4-PAIR TWISTED PAIR HORIZONTAL CABLEING SYSTEM... WALL LININGS SHALL BE USED WHERE RACKS, CABINETS, OR TERMINATIONS AND EQUIPMENT ARE MOUNTED TO A WALL... WALL MOUNTED TERMINATION DEVICES SHALL BE SECURELY ATTACHED TO BACKBOARD PER MANUFACTURER'S INSTRUCTIONS...

CABLE RUNWAY LADDER RACK SHALL BE INSTALLED FOR CABLE SUPPORT, SERVICE LOOP STORAGE, AND CABLE PATHWAY BETWEEN THE BACKBOARD AND EQUIPMENT CABINET... CABINETS OR RACKS USED FOR MOUNTING OF TERMINATION DEVICES AND EQUIPMENT... BOND TO GROUND EACH CABINET, RACK, EQUIPMENT ENCLOSURE, AND LADDER RACK... PROVIDE ONE IT WATCHDOG 15-POE ENVIRONMENT MONITOR... PROVIDE APC SMART ON-LINE UPS (SURTA220RMLXLU2), 2.2KVA WITH NETWORK MONITORING CARD (AP518)...

CABLEING - PRE-APPROVED MANUFACTURERS INCLUDE BERK-TEK GENERAL PERFORMANCE... TWISTED PAIR CABLE IS REQUIRED TO HAVE THE APPROPRIATE CATEGORY CLASSIFICATION AS DEFINED BY TIA/EIA-568-C... CABLE TERMINATION HARDWARE - PRE-APPROVED MANUFACTURERS INCLUDE LEVITON... LABELING - ALL CABLES AND DEVICES SHALL BE LABELED... LABELS SHALL BE A SELF-LAMINATING TYPE ADHESIVE BACKED... INSTALLATION OF CABLES - INSTALL CABLES WITHIN APPROVED PATHWAYS... CABLE TERMINATION - PROVIDE 110-STYLE IDC TERMINATION HARDWARE UNLESS OTHERWISE INDICATED... TESTING - PERFORM TESTS AND INSPECTIONS. FIELD TEST FOR EACH INSTALLED OUTLET TO PERMANENT LINK STANDARDS... IDENTIFICATION - LABEL EACH END OF EACH CABLE 4-6 INCHES FROM THE TERMINATION POINT... IDENTIFICATION - LABEL EACH END OF EACH CABLE 4-6 INCHES FROM THE TERMINATION POINT... IDENTIFICATION - LABEL EACH END OF EACH CABLE 4-6 INCHES FROM THE TERMINATION POINT...

IDENTIFICATION - LABEL EACH END OF EACH CABLE 4-6 INCHES FROM THE TERMINATION POINT. IDENTIFY SYSTEM COMPONENTS AND CABLEING IN COMPLIANCE WITH TIA/EIA-606-B.

TESTING - PERFORM TESTS AND INSPECTIONS. FIELD TEST FOR EACH INSTALLED OUTLET TO PERMANENT LINK STANDARDS. PREFORM VERIFICATION TESTS FOR TWISTED PAIR SYSTEMS AFTER THE COMPLETE COMMUNICATIONS CABLEING AND WORKSTATION OUTLET/CONNECTORS ARE INSTALLED. DATA FOR EACH MEASUREMENT SHALL BE DOCUMENTED. DATA FOR SUBMITTALS SHALL BE PRINTED IN A SUMMARY REPORT FOR THE CABLES AS WELL AS A DETAILED REPORT FOR EACH CABLE TESTED...

IDENTIFICATION - LABEL EACH END OF EACH CABLE 4-6 INCHES FROM THE TERMINATION POINT. IDENTIFY SYSTEM COMPONENTS AND CABLEING IN COMPLIANCE WITH TIA/EIA-606-B.

IDENTIFICATION - LABEL EACH END OF EACH CABLE 4-6 INCHES FROM THE TERMINATION POINT. IDENTIFY SYSTEM COMPONENTS AND CABLEING IN COMPLIANCE WITH TIA/EIA-606-B.

IDENTIFICATION - LABEL EACH END OF EACH CABLE 4-6 INCHES FROM THE TERMINATION POINT. IDENTIFY SYSTEM COMPONENTS AND CABLEING IN COMPLIANCE WITH TIA/EIA-606-B.

IDENTIFICATION - LABEL EACH END OF EACH CABLE 4-6 INCHES FROM THE TERMINATION POINT. IDENTIFY SYSTEM COMPONENTS AND CABLEING IN COMPLIANCE WITH TIA/EIA-606-B.

IDENTIFICATION - LABEL EACH END OF EACH CABLE 4-6 INCHES FROM THE TERMINATION POINT. IDENTIFY SYSTEM COMPONENTS AND CABLEING IN COMPLIANCE WITH TIA/EIA-606-B.

IDENTIFICATION - LABEL EACH END OF EACH CABLE 4-6 INCHES FROM THE TERMINATION POINT. IDENTIFY SYSTEM COMPONENTS AND CABLEING IN COMPLIANCE WITH TIA/EIA-606-B.

IDENTIFICATION - LABEL EACH END OF EACH CABLE 4-6 INCHES FROM THE TERMINATION POINT. IDENTIFY SYSTEM COMPONENTS AND CABLEING IN COMPLIANCE WITH TIA/EIA-606-B.

GENERAL ROUGH-IN NOTES:

- 1) THE DIVISION 27 CONTRACTOR SHALL THOROUGHLY REVIEW THE SPECIFIED ROUGH-IN TO ENSURE THAT SUPPLIED ROUGH-IN WILL SUPPORT THE CABLEING AND DEVICES BEING SUPPLIED... 2) NOT USED... 3) ALL PATHWAYS, UNLESS SPECIFICALLY NOTED ON THE FLOOR PLAN, SHALL BE EITHER PARALLEL OR PERPENDICULAR TO BUILDING STRUCTURE... 4) WHERE A TELECOMMUNICATIONS OUTLET LOCATION IS ADJACENT TO AN ELECTRICAL OUTLET... 5) CABLEING INSTALLED WITHIN AN INACCESSIBLE CEILING OR BUILDING CAVITY SHALL BE SLEEVED TO AN ACCESSIBLE AREA WITH CONDUIT APPROPRIATE FOR THE AREA... 6) REFER TO PLANS AND OTHER DRAWINGS IN THIS SERIES FOR CONDUIT RISERS, PATHWAY REQUIREMENTS, AND DETAILS FOR SPECIAL REQUIREMENTS... 7) CONDUIT RUNS SHALL HAVE NO MORE THAN 180 DEGREES OF BENDS WITHOUT AN ADEQUATE PULL BOX... 8) PULL BOXES SHALL BE MOUNTED SO AS TO BE ACCESSIBLE... 9) "ABOVE ACCESSIBLE CEILING" SHALL BE INTERPRETED TO GENERALLY MEAN THE ACCESSIBLE CAVITY ABOVE SUSPENDED CEILING AND BENEATH THE DECK FLOOR ABOVE... 10) "BELOW ACCESSIBLE CEILING" SHALL BE INTERPRETED TO GENERALLY MEAN THE ACCESSIBLE CAVITY BELOW SUSPENDED CEILING AND ABOVE THE DECK FLOOR ABOVE...

GENERAL CABLEING NOTES:

- 1) PLENUM CABLE REQUIRED - ALL PROVIDED CABLE THAT WILL NOT BE INSTALLED IN A FULLY ENCLOSED CONDUIT SYSTEM SHALL BE RATED FOR INSTALLATION WITHIN A RETURN AIR PLENUM... 2) ALL INSTALLED CABLEING SHALL BE CONTINUOUS AND WITHOUT SPLICES... 3) COLORS OF CABLEING USED FOR ALL COMMUNICATIONS TECHNOLOGY WORK SHALL BE REVIEWED AND APPROVED PRIOR TO PROCUREMENT AND INSTALLATION...

GENERAL NOTES:

- 1) NOTHING SET FORTH IN THESE DRAWINGS SHALL RELEASE ANY CONTRACTOR FROM HIS RESPONSIBILITY TO PROVIDE APPROPRIATE QUANTITIES, FIELD MEASUREMENTS, DIMENSIONAL ACCURACY, INSTALLATION, ANCHORAGE, AND COORDINATION WITH OTHER TRADES... 2) CONTRACTOR SHALL VERIFY ALL DIMENSIONS OF THE PROJECT SPECIFICATIONS AND DRAWINGS ARE FULFILLED TO BEYOND ELEMENTARY AND UTILITY EXCLUSIVE WORK SHOWN ON THE DRAWINGS... 3) EACH CONTRACTOR SHALL VERIFY IN THE FIELD ALL EXISTING APPLICABLE CONDITIONS AND DIMENSIONS... 4) EACH CONTRACTOR SHALL REVIEW ALL PORTIONS OF HIS WORK... 5) EACH CONTRACTOR SHALL BE RESPONSIBLE FOR JOB CLEANLINESS... 6) EACH CONTRACTOR SHALL BE RESPONSIBLE FOR PROTECTION OF ALL SURFACES AND FINISHES IN THE INTERIOR OR EXTERIOR OF THE FACILITY...

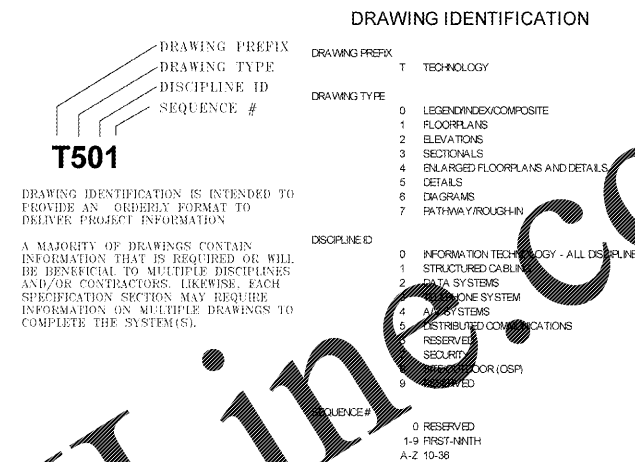
EXISTING CONDITIONS AND PHASING NOTES:

- 1) FOR COORDINATION PURPOSES, OCCASIONALLY AN ITEM OF WORK MAY BE SHOWN ON THE E SERIES DRAWINGS AND THE T SERIES DRAWINGS... 2) MAINTAINING TELEPHONE, DATA, CENTRAL SOUND, SECURITY CCTV AND ALARM SYSTEM SERVICES IN ALL EXISTING AREAS FOR DURATION OF PROJECT... 3) FIELD VERIFY EXISTING APPLICABLE CONDITIONS AND DIMENSIONS SHOWN ON THE DRAWINGS... 4) ALL WORK SHALL BE SEQUENCED TO PROVIDE FOR THE OWNER'S CONTINUED USE OF THE EXISTING FACILITY... 5) PROVIDE DUST PROTECTION WHEN WORKING IN EXISTING FACILITIES... 6) COMMUNICATIONS UTILITY INCOMING SERVICES WILL BE REQUIRED FOR THE SUITE AS INDICATED ON THE BACKSHEET DIAGRAM...

PATHWAY AND SPACES DEVICES

Table with 3 columns: TYP, TELECOMMUNICATION WALL LINING (BACKBOARD), DETAILS. Includes items like 8" TALL 4" WIDTH x AC PLYWOOD, FIRE-RATED SLEEVE THROUGH WALL, FLOOR DEVICE - BOX/POKE-THRU.

DRAWING IDENTIFICATION



LEGEND NOTES:

- 1) NOTE: DETAILS SHOWN IN DRAWINGS, UTILIZE BEST COMMON PRACTICES AND DIRECT ANY QUESTIONS TO THE DESIGNER... 2) BOLD SYMBOLS ARE UTILIZED TO REFERENCE THE FLOORPLAN LOCATION AND PROPER ROUGH-IN REQUIREMENTS... 3) WHERE SUBSCRIPTS ARE USED WITH THESE SYMBOLS, ROUGH-IN AND CABLEING VARIATIONS ARE INDICATED... 4) AFF INDICATES ABOVE FINISHED FLOOR, BAC INDICATES BELOW ACCESSIBLE CEILING LINE... 5) DIMENSIONS SHOWN IN THE LEGEND (AFF, BAC, OR BCL) ARE TYPICAL AND SHALL BE CONSIDERED UNLESS OTHERWISE NOTED... 6) THE LEGEND WILL PROVIDE REFERENCE TO INFORMATION ABOUT THE REQUIREMENTS FOR EACH SYMBOL... 7) WHERE A SPECIFIC DETAIL IS ASSOCIATED WITH A SYMBOL, A SHEET WILL BE INDICATED AND THE DETAIL WILL BE LISTED ABOVE IT... 8) WHERE A SHEET REFERENCE HAS A NUMBER SUBSTITUTED WITH AN "X", THE REFERENCE IS TO ANY SHEETS IN THAT SERIES...

EXISTING CONDITIONS AND PHASING NOTES:

- 1) FOR COORDINATION PURPOSES, OCCASIONALLY AN ITEM OF WORK MAY BE SHOWN ON THE E SERIES DRAWINGS AND THE T SERIES DRAWINGS... 2) MAINTAINING TELEPHONE, DATA, CENTRAL SOUND, SECURITY CCTV AND ALARM SYSTEM SERVICES IN ALL EXISTING AREAS FOR DURATION OF PROJECT... 3) FIELD VERIFY EXISTING APPLICABLE CONDITIONS AND DIMENSIONS SHOWN ON THE DRAWINGS... 4) ALL WORK SHALL BE SEQUENCED TO PROVIDE FOR THE OWNER'S CONTINUED USE OF THE EXISTING FACILITY... 5) PROVIDE DUST PROTECTION WHEN WORKING IN EXISTING FACILITIES... 6) COMMUNICATIONS UTILITY INCOMING SERVICES WILL BE REQUIRED FOR THE SUITE AS INDICATED ON THE BACKSHEET DIAGRAM...

TELECOMMUNICATIONS

Table with 4 columns: WALL OUTLET; DATA, ROUGH-IN, DETAILS. Includes items like TYPICAL OUTLET REFERENCE, ABOVE CEILING OUTLET, BUILDING SERVICE OUTLET, SHOPPER TRACKER.

ROBERT E. VANNEY ARCHITECT. 3001 ROBERT STREET, STE. 201. SAINT PAUL, MINNESOTA 55101. (612) 222-4444. FAX (612) 222-3333.

HALLBERG ENGINEERING. Mechanical/Electrical Consulting Engineers. 1750 Commerce Court. White Bear Lake, MN 55110. (651) 748-1100 - Fax (651) 748-9370.

West Marine. 500 Westridge Drive. Watsonville, California 95076. p: 831.728.2700 f: 831.761.4220.

ISLAND WALK @ PALM COAST. 250 PALM COAST PKWY NE. PALM COAST, FL 32137. STORE #TBD.

Table with 2 columns: commission number, R17-2777.003. Includes checkboxes for WM 75%, L1 Final, Permit, Bidding.

Table with 2 columns: drawing title, TECHNOLOGY LEGEND AND NOTES. Includes checkboxes for drawing title.

TECHNOLOGY LEGEND AND NOTES. Includes checkboxes for drawing title and sheet number T001.