

## ELECTRICAL SYMBOLS

## ELECTRICAL SHEET INDEX

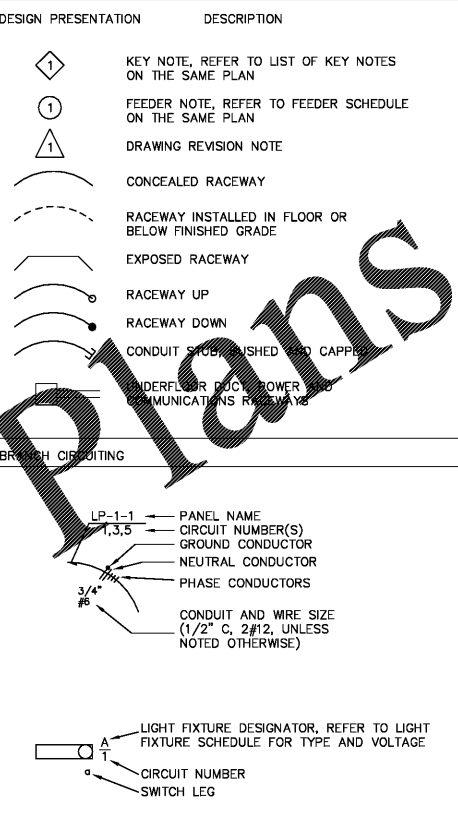
LIGHT FIXTURE	DESCRIPTION	MOUNTING	WIRING DEVICE	DESCRIPTION	MOUNTING
	SURFACE FLUORESCENT, NORMAL POWER			RECEPTACLE OPTIONS DENOTED BY "X", WHERE "X" CAN BE ONE OF THE FOLLOWING: IG = ISOLATED GROUND GFI = GROUND FAULT INTERRUPTER TR = TAMPER RESISTANT SS = SURGE SUPPRESSOR WP = WEATHERPROOF (blank) = STANDARD RECEPTACLE	
	SURFACE FLUORESCENT, EMERGENCY POWER				
	RECESSED FLUORESCENT, NORMAL POWER				
	RECESSED FLUORESCENT, EMERGENCY POWER				
	WALL MOUNTED EXIT SIGN, SHADING INDICATES THE ILLUMINATED FACES	96" AFF or 8" BFC			
	CEILING MOUNTED EXIT SIGN, SHADING INDICATES THE ILLUMINATED FACES				
	BATTERY PACK, NORMAL POWER	96" AFF or 8" BFC			
	BATTERY PACK, EMERGENCY POWER	96" AFF or 8" BFC			
	POLE, BASE AND FIXTURE(S). CIRCLES INDICATE # OF HEADS PER POLE, NORMAL POWER				
	POLE, BASE AND FIXTURE(S). CIRCLES INDICATE # OF HEADS PER POLE, EMERGENCY POWER				
	WALL MOUNTED FIXTURE AND BRACKET, NORMAL POWER				
	WALL MOUNTED FIXTURE AND BRACKET, EMERGENCY POWER				
	STRIP FIXTURE, NORMAL POWER				
	STRIP FIXTURE, EMERGENCY POWER				
	SURFACE MOUNTED DOWNLIGHT, NORMAL POWER				
	SURFACE MOUNTED DOWNLIGHT, EMERGENCY POWER				
	RECESSED DOWNLIGHT, NORMAL POWER				
	RECESSED DOWNLIGHT, EMERGENCY POWER				
	RECESSED WALL WASHER, NORMAL POWER				
	RECESSED WALL WASHER, EMERGENCY POWER				
	TRACK FIXTURES AND TRACK ASSEMBLY, NORMAL POWER				
	TRACK FIXTURES AND TRACK ASSEMBLY, EMERGENCY POWER				
	SWITCH, WHERE "X" CAN BE ONE OF THE FOLLOWING: 2 = DOUBLE POLE 3 = THREE WAY 4 = FOUR WAY K = KEYED LV = LOW VOLTAGE MC = MOMENTARY WITH RTC OS = OCCUPANCY SENSOR (blank) = SINGLE POLE	46"			
	DIMMER SWITCH, OPERATING WATTAGE INDICATED	46"			
	SWITCH WITH PILOT LIGHT	46"			
	OCCUPANCY SENSOR, WHERE "Y" IS THE RATED AREA OF COVERAGE AND "X" IS ONE OF THE FOLLOWING: DT = DUAL TECHNOLOGY US = ULTRASONIC PIR = PASSIVE INFRARED				
MISCELLANEOUS	DESCRIPTION	MOUNTING			
	JUNCTION BOX, RECESSED WALL				
	JUNCTION BOX, RECESSED CEILING				
	CLOCK, WALL MOUNTED	96" or 8" BFC			
	CLOCK, CEILING MOUNTED				
	LINE VOLTAGE THERMOSTAT				
	PUSHBUTTON	46"			
	EMERGENCY POWER OFF PUSHBUTTON	46"			
	LINE SWITCH				
	CONTACTOR				

COMMUNICATIONS	DESCRIPTION	MOUNTING	FIRE ALARM	DESCRIPTION	MOUNTING
	INTERCOM - DESK	18"		FIRE ALARM DEVICE, WHERE "X" CAN BE ONE OF THE FOLLOWING: (blank) K FIRE ALARM MANUAL KEYED STATION I IONIZATION DETECTOR H THERMAL DETECTOR P PHOTOELECTRIC SMOKE DETECTOR DS DUCT SMOKE DETECTOR FL SPRINKLER VALVE FLOW SWITCH B-T BEAM DETECTOR, TRANSMITTER B-R BEAM DETECTOR, RECEIVER RB ROTATING BEACON MM MONITOR MODULE CM CONTROL MODULE D MAGNETIC DOOR HOLDER MR SHUTTER/ROLLING DOOR RELEASE TS DUCT DETECTOR REMOTE TEST STATION VDT VIDEO DISPLAY TERMINAL & KEYBOARD PR SYSTEM EVENT PRINTER	46" 46"
	INTERCOM - WALL	54"		FIRE ALARM HORN	80"
	TELEPHONE - DESK	18"		FIRE ALARM SPEAKER	80"
	TELEPHONE - WALL	54"		FIRE ALARM STROBE	80"
	HOUSE PHONE	54"		FIRE ALARM HORN WITH STROBE	80"
	VOICE/DATA OUTLET	18"		FIRE ALARM MINI-HORN WITH STROBE	80"
	TECHNOLOGY OUTLET (REFER TO SPEC.)	18"		FIRE ALARM SPEAKER WITH STROBE	80"
	BELL	80"		FIREFIGHTER PHONE	46"
	BUZZER	80"		FIRE ALARM BELL	80"
	CHIME	80"		FIRE ALARM CHIME	80"
	TELEVISION RECEIVER	18"		FIRE ALARM CHIME WITH STROBE	80"
	MICROPHONE OUTLET	18"		SPRINKLER VALVE POSITION SWITCH	
	LINE LEVEL OUTLET	18"			
	VOLUME CONTROL, ZONE NUMBER INDICATED	46"			
	PROJECTOR OUTLET	18"			
	EFFECTS SPEAKER OUTLET				
	REMOTE CONTROL				
	MONITOR SPEAKER OUTLET				
	SOUND REINFORCEMENT OUTLET	6" BFC			
	SPEAKER, CEILING MOUNTED WITH TYPE AND ZONE NUMBER INDICATED (REFER TO SPECIFICATION FOR TYPE)				
	SPEAKER, WALL MOUNTED WITH TYPE AND ZONE NUMBER INDICATED (REFER TO SPECIFICATION FOR TYPE)				
	SPEAKER RE-ENTRANT HORN WITH ZONE NUMBER INDICATED				

E001	COVER SHEET
E100	ELECTRICAL AMBIENT LIGHTING PLAN
E101	ELECTRICAL ACCENT LIGHTING PLAN
E200	ELECTRICAL POWER PLAN
E201	ELECTRICAL POWER-ROOF PLAN
E302	ELECTRICAL DETAILS/RISER DIAGRAM
E303	EMS DETAILS
E304	EMS SCHEDULES
E601	ELECTRICAL PANEL SCHEDULES
E901	ELECTRICAL SPECIFICATIONS
E902	ELECTRICAL SPECIFICATIONS
T001	TECHNOLOGY TITLE SHEET
T201	TECHNOLOGY FLOOR PLAN
T401	TECHNOLOGY DETAILS
T402	TECHNOLOGY DETAILS
T501	TECHNOLOGY OUTLET REQUIREMENTS
T502	TECHNOLOGY CABLING DETAILS

### LUMINAIRE SCHEDULE

TYPE	SYMBOL	DESCRIPTION	MANUFACTURER	MODEL NO.	MOUNTING	LAMPS	VOLTAGE	WATTS	REMARKS
A4		4' WRP ROUND LENS FLUORESCENT	PHILIPS (DAY-BRITE)	OWN232-UNV-1/2	SUSPENDED	(2)32W T8	120V 1P,2W	64W	NONE
A4EM		4' WRP ROUND LENS FLUORESCENT	PHILIPS (DAY-BRITE)	OWN232-UNV-1/2-E1	SUSPENDED	(2)32W T8	120V 1P,2W	64W	PROVIDE WITH 90 MINUTE EMERGENCY BACKUP BATTERY
C4		2' X 4' FLUORESCENT TROFFER PRISMATIC	LITHONIA	2GT8-2-32-A12-MVOLT GEB10IS-PWS1836-LP735	CEILING	(2)32W T8	120V 1P,2W	64W	NONE
EX1		EXIT LIGHT RED LETTERS ON WHITE BACKGROUND, COMBO EXIT LIGHT	PHILLIPS (LIGHTOLIER)	LLC2URW SD	SURFACE	(1) LED INCLUDED	120V 1P,2W	3.324W	PROVIDE WITH 90 MINUTE EMERGENCY BACKUP BATTERY
EX2		EXIT LIGHT RED LETTERS ON WHITE BACKGROUND, TWO SIDED	PHILLIPS (LIGHTOLIER)	LNURW SD	PENDANT	(1) LED INCLUDED	120V 1P,2W	3.324W	PROVIDE WITH 90 MINUTE EMERGENCY BACKUP BATTERY
F1EM		4' FLUXSTREAM LED LINEAR WITH REFLECTOR	PHILIPS (DAY-BRITE)	LF4-4-FL-LWS-55-35-U-DZT	CHAIN-HUNG	(1)53W LED	120V 1P,2W	53W	NONE
F1EM		4' FLUXSTREAM LED LINEAR WITH REFLECTOR	PHILIPS (DAY-BRITE)	LF4-4-FL-LWS-55-35-U-DZT-EMLED	CHAIN-HUNG	(1)53W LED	120V 1P,2W	53W	PROVIDE WITH 90 MINUTE EMERGENCY BACKUP BATTERY
F8		8' FLUORESCENT STRIP WITH SOLID TOP REFLECTOR	PHILIPS (DAY-BRITE)	TIS132-UNV-1/2-EBD	CHAIN-HUNG	(2)32W T8	120V 1P,2W	64W	NONE
F8EM		8' FLUORESCENT STRIP WITH SOLID TOP REFLECTOR	PHILIPS (DAY-BRITE)	TIS132-UNV-1/2-EBD-E5	CHAIN-HUNG	(2)32W T8	120V 1P,2W	64W	PROVIDE WITH 90 MINUTE EMERGENCY BACKUP BATTERY
P2		DEEP BOWL LED PENDANT LIGHT	LSI INDUSTRIES	BD300-10-LED-CUSTOM COLOR	PENDANT	(1)11W LED	120V 1P,2W	11W	NONE
P3		LED PENDANT LIGHT	BASELITE	W516/INC/49/GR16/BLC(15")	PENDANT	(1)16W GE LED16A212/B27	120V 1P,2W	16W	NONE
T2		25W LED TRACK FLOODLIGHT	PHILIPS(LIGHTOLIER)	LC-20-930-ALTE-LLAV11-RNS	TRACK-MOUNTED 15"4" AFF TO TOP OF TRACK	(1)25W LED	120V 1P,2W	25W	PROVIDE TRACK WITH LENGTH SHOWN ON PLAN.



**ROBERT F. VANNEY ARCHITECT**

3001 CROSBY STREET, STE. 201  
SANT PAUL, MINNESOTA 55101  
(612) 222-4242 FAX (612) 222-3838

consultant  
**HALLBERG ENGINEERING**  
Mechanical/Electrical Consulting Engineers  
1750 Commerce Court  
White Bear Lake, MN 55110  
(612) 748-1100 • Fax (612) 748-9370

**West Marine**  
500 Westridge Drive  
Watsonville, California 95076  
p: 831.728.2700 f: 831.761.4220

ISLAND WALK @  
PALM COAST  
250 PALM COAST PKWY NE  
PALM COAST, FL 32137  
STORE #TBD

commission number R17-2777.003

WM 75% 07/07/2017  
LL Final  
Permit 07/24/2017  
Bidding 10/02/2017

drawing title  
**COVER SHEET**

sheet number  
**E001**