

consultant

West Marine
 500 Westridge Drive
 Watsonville, California 95076
 p: 831.728.2700 f: 831.761.4220

ISLAND WALK @
 PALM COAST
 250 PALM COAST PKWY NE
 PALM COAST, FL 32137
 STORE #TBD

commission number 44-1047

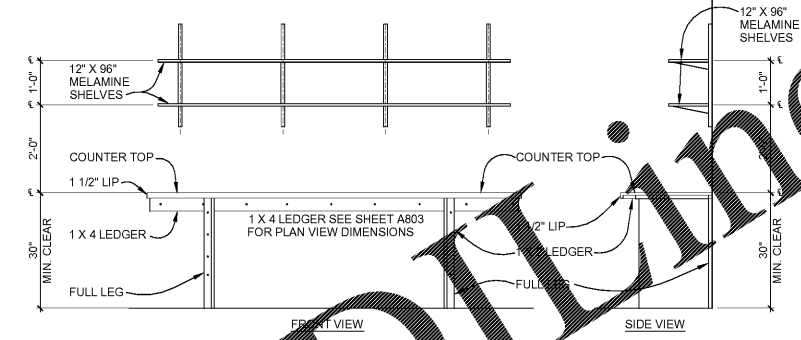
WM 75% 07/07/2017

LL Final
 Permit
 Bidding

drawing title
INTERIOR DETAILS

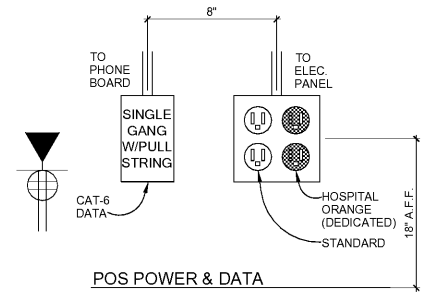
sheet number
A904

- ALL EXPOSED SURFACES PLASTIC LAMINATE- WILSONART - FASHION GREY D381-6
- COUNTERS & BRACKETS CONSTRUCTED OF 3/4" ACX PLY (SANDED ON BOTH SIDES)
- SCREW ALL LEDGERS TO STUDS
- ALL MATERIALS SUPPLIED & INSTALLED BY CONTRACTOR
- MELAMINE SHELVES TO BE HUNG WITH STANDARDS

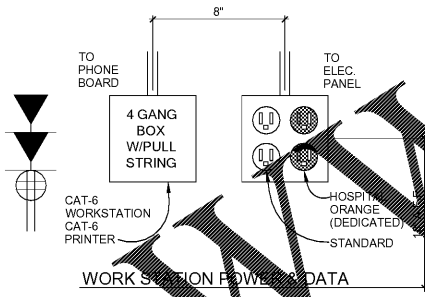


2 BUILT-IN COUNTER DETAIL
 A904 1/2" = 1'-0"

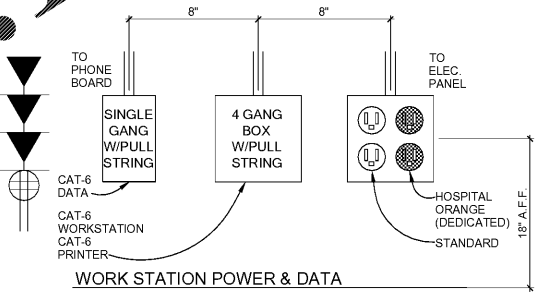
1 NOT USED
 A904 NO SCALE



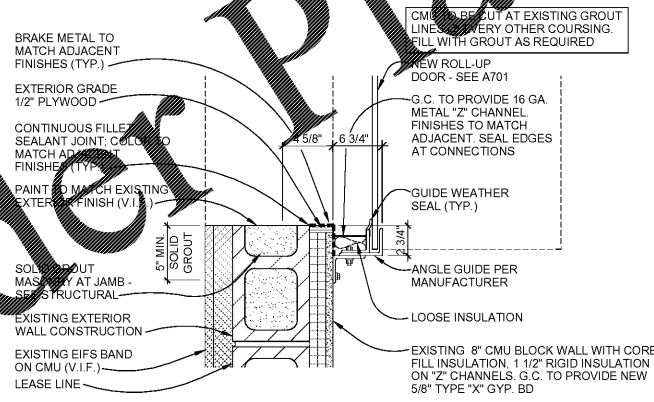
- 3 POWER & DATA @ POS**
 A904 NOT TO SCALE
- * MOUNTED VERTICALLY ON MILLWORK OR LOZIER DIRECTLY BENEATH GROMMET HOLES FOR CASHWRAPS AND/OR WORKSTATIONS. FLEX CONDUITS FROM JUNCTION BOXES TO DIVIDED POWER POLE.
 - * ALL HOSPITAL ORANGE (DEDICATED POWER ON 247V) TO BE A DEDICATED CIRCUIT WITH ISOLATED GROUND AND ORANGE PLUG.
 - * PROVIDE 2X4 TRIM RINGS AT J-BOX
 - * GC TO PROVIDE 400LB PULL LINE AT ALL NEW DATA BOXES
 - * CASHWRAP LOCATION - CONDUIT TO PHONE BOARD & PHONE JACKS TO BE ATTACHED TO WALL OF REGISTER STAND



- 4 POWER & DATA @ WORK STATION**
 A904 NOT TO SCALE
- * MOUNTED VERTICALLY ON MILLWORK OR LOZIER DIRECTLY BENEATH GROMMET HOLES FOR CASHWRAPS AND/OR WORKSTATIONS. FLEX CONDUITS FROM JUNCTION BOXES TO DIVIDED POWER POLE.
 - * ALL HOSPITAL ORANGE (DEDICATED POWER ON 247V) TO BE A DEDICATED CIRCUIT WITH ISOLATED GROUND AND ORANGE PLUG.
 - * PROVIDE 2X4 TRIM RINGS AT J-BOX
 - * GC TO PROVIDE 400LB PULL LINE AT ALL NEW DATA BOXES



- 5 POWER & DATA @ SERVER**
 A904 NOT TO SCALE
- * MOUNTED VERTICALLY ON MILLWORK OR LOZIER DIRECTLY BENEATH GROMMET HOLES FOR CASHWRAPS AND/OR WORKSTATIONS. FLEX CONDUITS FROM JUNCTION BOXES TO DIVIDED POWER POLE.
 - * ALL HOSPITAL ORANGE (DEDICATED POWER ON 247V) TO BE A DEDICATED CIRCUIT WITH ISOLATED GROUND AND ORANGE PLUG.
 - * PROVIDE 2X4 TRIM RINGS AT J-BOX
 - * GC TO PROVIDE 400LB PULL LINE AT ALL NEW DATA BOXES



6 DETAIL @ ROLL UP DOOR
 A904 1 1/2" = 1'-0"

Order Plans

WWW.LDIDLINE.COM