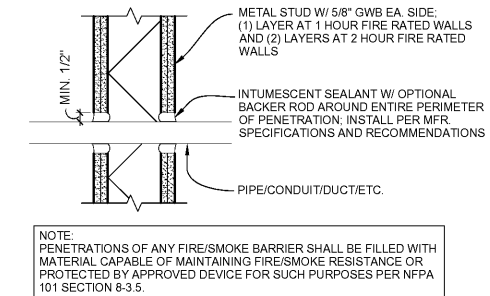
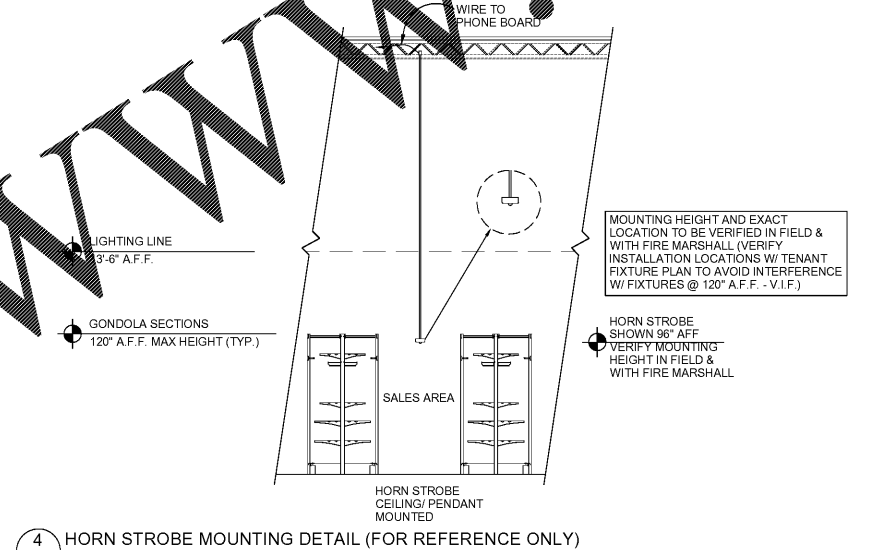


1 DOCK CLEAT DOOR HANDLE
A903 3" = 1'-0"



2 PENETRATION @ RATED WALL
A903 1 1/2" = 1'-0"

3 NOT USED
A903 1" = 1'-0"



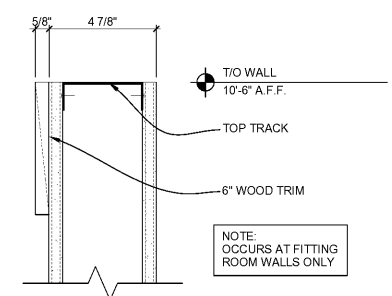
4 HORN STROBE MOUNTING DETAIL (FOR REFERENCE ONLY)
A903 3/16" = 1'-0"

INSTALLATION

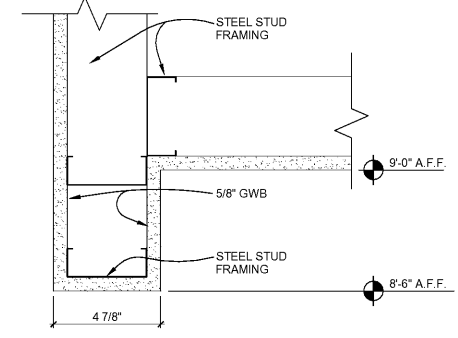
1. THE FENDALL PURE FLOW 1000 IS NOT FOR OUTSIDE USE. DO NOT INSTALL THE EYEWASH STATION IN AN OUTSIDE LOCATION.
2. THE FENDALL PURE FLOW 1000 MUST BE PLACED IN A WELL-LIGHTED, ACCESSIBLE LOCATION NEAR THE HAZARD.
3. MOUNT THE METAL HANGING BRACKET ON THE WALL USING APPROPRIATE FASTENERS.
4. MOUNTING MUST SUPPORT THE WEIGHT OF THE UNIT (100 LBS./45 KG), PLUS WEIGHT OF THE INDIVIDUAL LEANING ON IT.
5. TOP OF BRACKET MUST BE 52-1/2" - 64-1/2" FROM THE FLOOR.
6. REMOVE COVER AND MOUNT UNIT ONTO THE BRACKET.
7. UNIT MUST BE LEVEL.
8. AREA BENEATH STATION MUST REMAIN CLEAR.



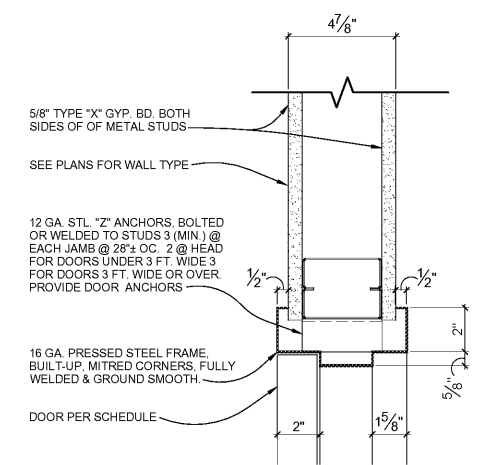
5 EYE WASH DETAIL
A903 NOT TO SCALE



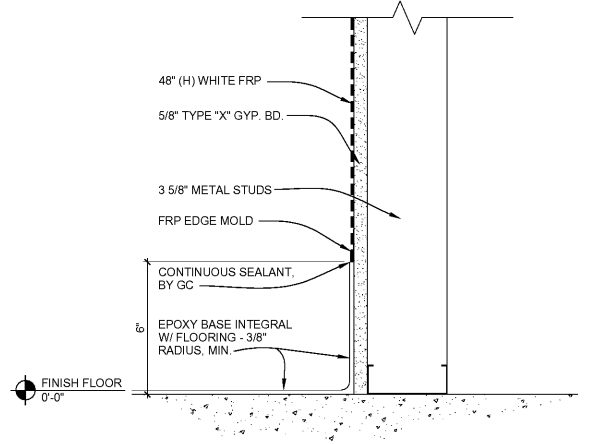
6 WALL TRIM DETAIL (@ FITTING ROOM)
A903 3" = 1'-0"



7 SECTION @ BULKHEAD
A903 3" = 1'-0"



8 STL DR JAMB/MTL STUD/INTERIOR (TYPICAL)
A903 3" = 1'-0"



9 EPOXY WALL BASE DETAIL
A903 3" = 1'-0"

ROBERT F. VANNEY ARCHITECT

3001 ROBERT STREET, STE. 201
SAINT PAUL, MINNESOTA 55101
PH: 222.4842 FAX: 651.222.3838

consultant

West Marine
500 Westridge Drive
Watsonville, California 95076
p: 831.728.2700 f: 831.761.4220

ISLAND WALK @
PALM COAST
250 PALM COAST PKWY NE
PALM COAST, FL 32137
STORE #TBD

commission number 44-1047

WM 75% 07/07/2017
LL Final
Permit 07/24/2017
Bidding 10/02/2017

ROBERT F. VANNEY ARCHITECT
PROJECT NUMBER

drawing title
INTERIOR DETAILS

sheet number
A903