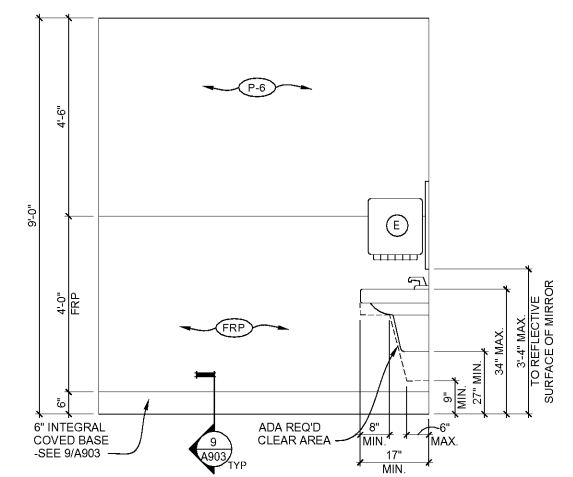
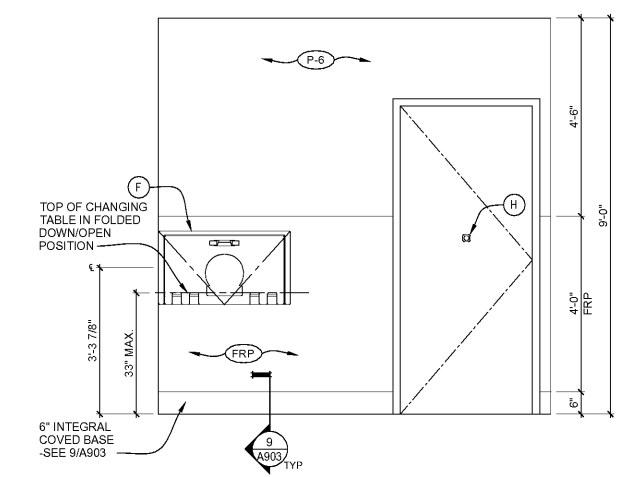


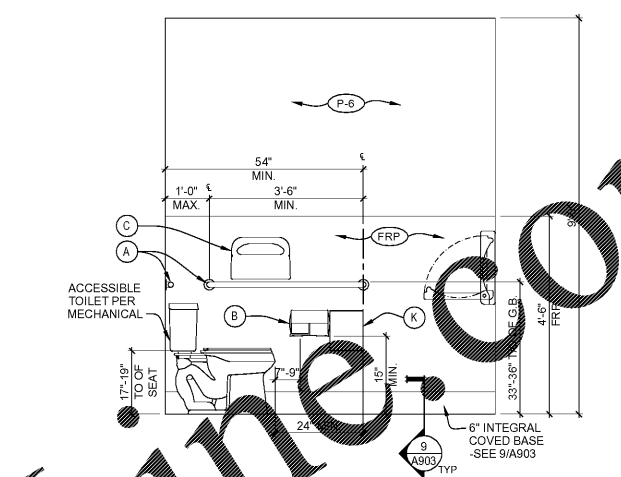
10 WATER HEATER DETAIL
A802 1/2" = 1'-0"



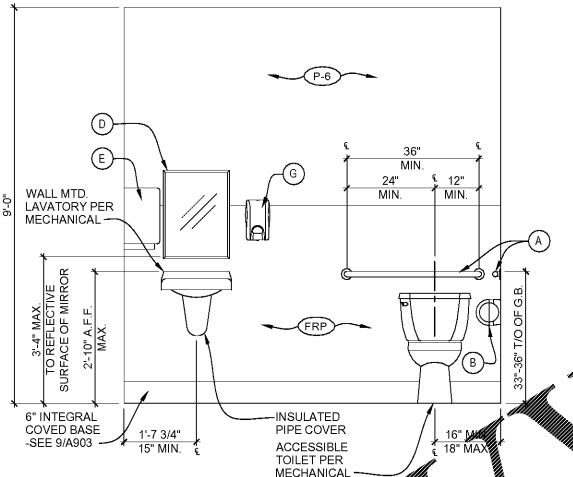
2 RESTROOM ELEVATION
A802 1/2" = 1'-0"



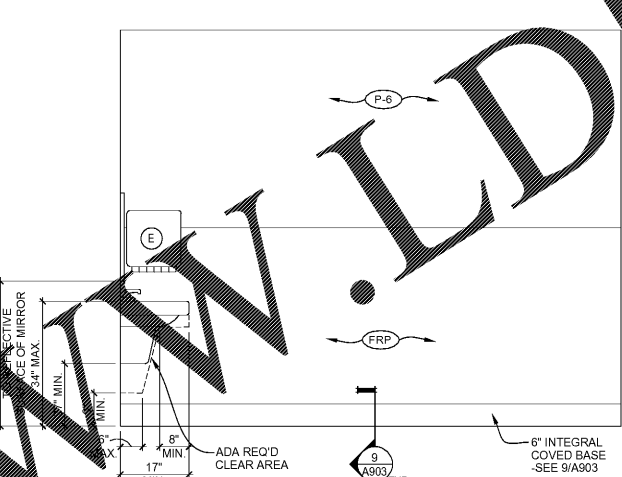
3 RESTROOM ELEVATION
A802 1/2" = 1'-0"



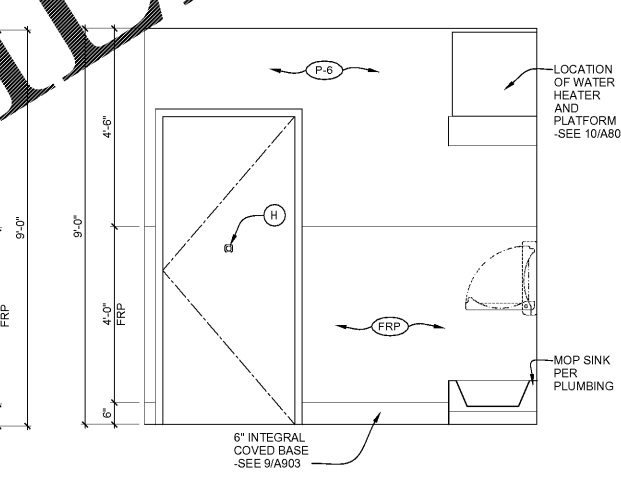
4 RESTROOM ELEVATION
A802 1/2" = 1'-0"



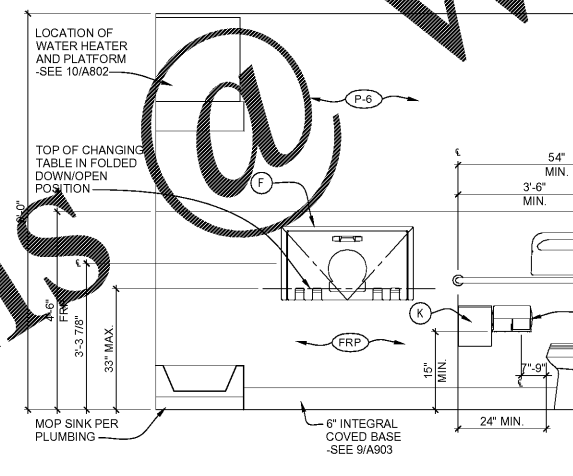
5 RESTROOM ELEVATION
A802 1/2" = 1'-0"



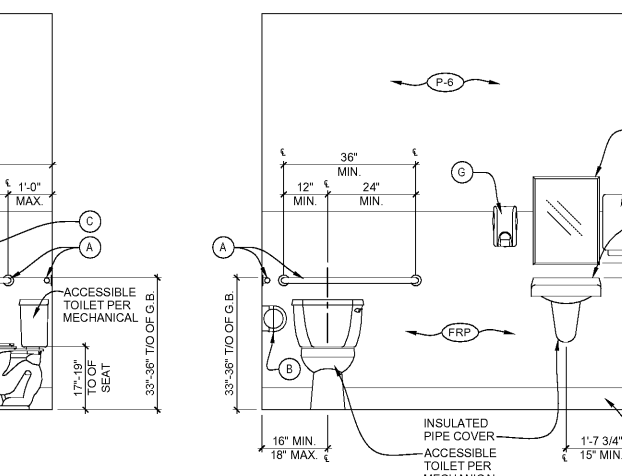
6 RESTROOM ELEVATION
A802 1/2" = 1'-0"



7 RESTROOM ELEVATION
A802 1/2" = 1'-0"



8 RESTROOM ELEVATION
A802 1/2" = 1'-0"



9 RESTROOM ELEVATION
A802 1/2" = 1'-0"

- NOTES**
- THESE DRAWINGS ARE BASED ON A LIMITED AMOUNT OF INFORMATION FOR AN EXISTING BUILDING. CONTRACTOR MUST FIELD VERIFY CONDITIONS AND NOTIFY ARCHITECT AND ENGINEER IF CONDITIONS ARE OTHER THAN IS SHOWN PRIOR TO MODIFICATION.
 - ALL DIMENSIONS SHOWN ARE FOR GENERAL REFERENCE ONLY. THE CONTRACTOR IS RESPONSIBLE FOR VERIFYING ALL DIMENSIONS AND ANY DISCREPANCIES MUST BE BROUGHT TO THE ATTENTION OF THE ARCHITECT AND ENGINEER IMMEDIATELY.
 - PROVIDE, LOCATE AND INSTALL CONTINUOUS BLOCKING TO FACILITATE INSTALLATION AND ATTACHMENT OF ALL WALL MOUNTED EQUIPMENT, CABINETS, MILLWORK, FINISHING MATERIALS, FIXTURES, SPECIALTY ITEMS AND TRIM.
 - PROVIDE SOUND ATTENUATING BATT INSULATION AS REQUIRED AT DEMISING WALLS.

RESTROOM KEY NOTES

(A)	1 1/2" DIAMETER STAINLESS STEEL GRAB BAR - BOBRICK B-6806 X36, B-6806 X42, B6806 X18 - F.C.I.C.
(B)	TOILET PAPER DISPENSER - GEORGIA PACIFIC #4TH54 - F.C.I.C.
(C)	SURFACE MOUNTED STAINLESS STEEL TOILET SEAT COVER DISPENSER - GEORGIA PACIFIC #2VEX8 - F.C.I.C.
(D)	24" X 18" MIRROR, 1/4" PLATE GLASS W/ FRAME, BOTTOM OF MIRROR MOUNTED @40" A.F.F. - BOBRICK B-165-1824 - F.C.I.C.
(E)	PAPER TOWEL DISPENSER - GEORGIA PACIFIC #3EB49 - F.C.I.C.
(F)	BABY CHANGING STATION, KOALA BEAR CARE, COLOR GRAY - BOBRICK KB200-01 - F.C.I.C.
(G)	SOAP DISPENSER - GEORGIA PACIFIC #6CGX1 - F.C.I.C.
(H)	COATHOOK, SATIN FINISH, MOUNT @48" A.F.F. ON ACCESSIBLE STALL DOORS - BOBRICK B-6717 - F.C.I.C.
(K)	WALL MOUNTED FEMINE HYGIENE DISPOSAL - GEORGIA PACIFIC #1ECK9 - F.C.I.C.

ROBERT F. VANNEY ARCHITECT

3001 ROBERT STREET, STE. 201
SAINT PAUL, MINNESOTA 55101
651.222.4842 FAX 651.222.3838

consultant

West Marine
500 Westridge Drive
Watsonville, California 95076
p. 831.728.2700 f. 831.761.4220

ISLAND WALK @
PALM COAST
250 PALM COAST PKWY NE
PALM COAST, FL 32137
STORE #TBD

commission number 44-1047

- WM 75% 07/07/2017
- LL Final
- Permit
- Bidding

drawing title
ENLARGED TOILET ROOMS & ELEVATIONS

sheet number
A802