

- NOTES:
1. THESE DRAWINGS ARE BASED ON A LIMITED AMOUNT OF INFORMATION FOR AN EXISTING BUILDING. CONTRACTOR MUST FIELD VERIFY CONDITIONS AND NOTIFY ARCHITECT AND ENGINEER IF CONDITIONS ARE OTHER THAN IS SHOWN PRIOR TO MODIFICATION.
 2. ALL DIMENSIONS SHOWN ARE FOR GENERAL REFERENCE ONLY. THE CONTRACTOR IS RESPONSIBLE FOR VERIFYING ALL DIMENSIONS AND ANY DISCREPANCIES MUST BE BROUGHT TO THE ATTENTION OF ARCHITECT AND ENGINEER IMMEDIATELY.
 3. SEE SHEET A903 FOR FINISH SCHEDULE AND LEGEND.
 4. PROVIDE 4" RUBBER BASE IN SALES AREA AT EXPOSED WALLS ONLY.

ROBERT F. VANNEY ARCHITECT

300 ROBERT STREET, STE. 201
 SAINT PAUL, MINNESOTA 55101
 (612) 222-4842 FAX (612) 222-3338

consultant

West Marine
 500 Westridge Drive
 Watsonville, California 95076
 p: 831.728.2700 f: 831.761.4220

ISLAND WALK @
 PALM COAST
 250 PALM COAST PKWY NE
 PALM COAST, FL 32137
 STORE #TBD

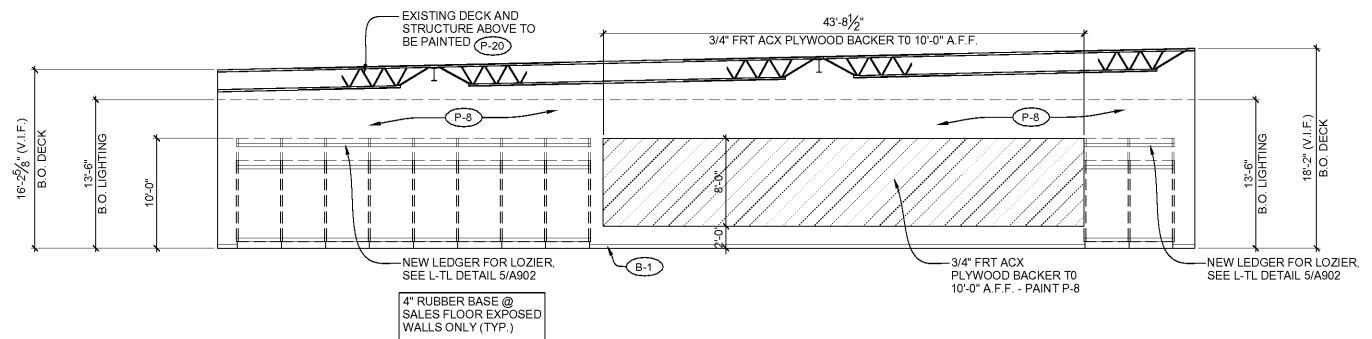
commission number 44-1047

- WM 75% 07/07/2017
- LL Final
- Permit
- Bidding

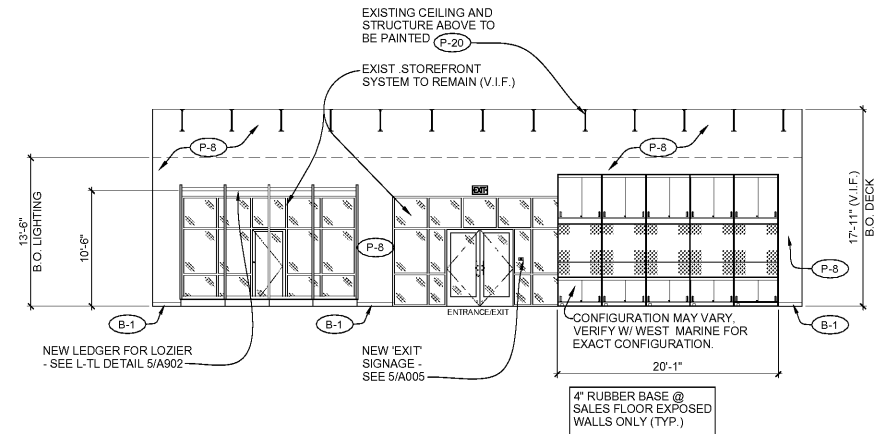
ROBERT F. VANNEY ARCHITECT

drawing title
INTERIOR ELEVATIONS

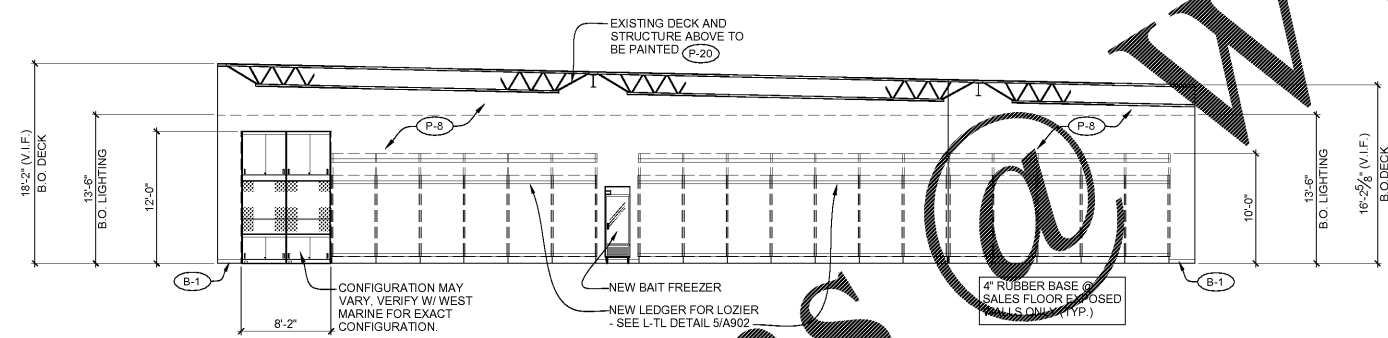
sheet number
A801



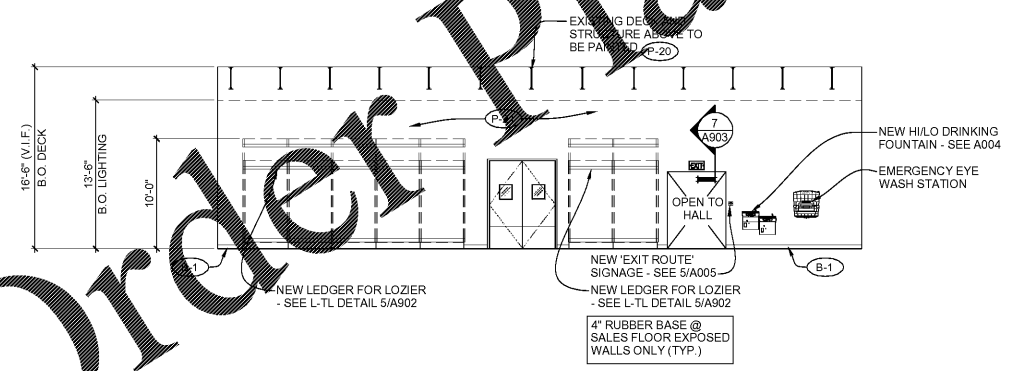
1 INTERIOR ELEVATION
 A801 1/8" = 1'-0"



2 INTERIOR ELEVATION
 A801 1/8" = 1'-0"



3 INTERIOR ELEVATION
 A801 1/8" = 1'-0"



4 INTERIOR ELEVATION
 A801 1/8" = 1'-0"

Order Plans @ WWW.LDILine.com