

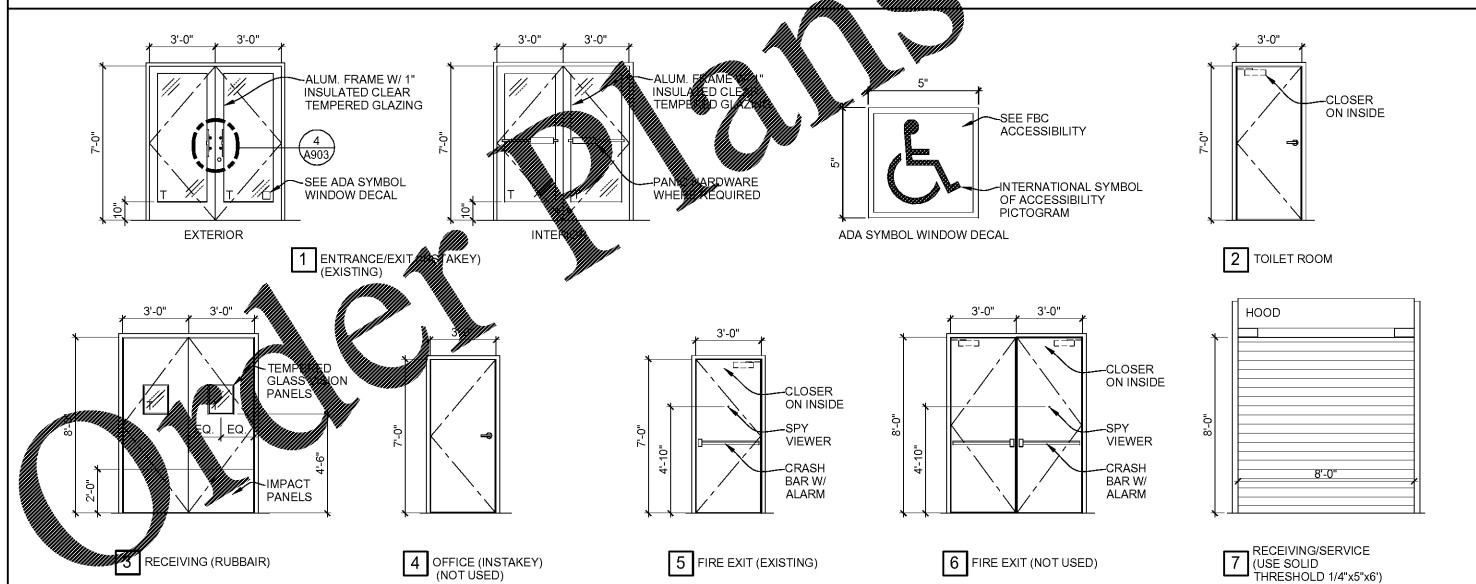
HARDWARE SCHEDULE

QTY.	DESCRIPTION	MANUFACTURER	NAME / MODEL #	COLOR / FINISH	REMARKS
HARDWARE GROUP 1 - STOREFRONT					
-	HINGES	-	EXISTING	EXISTING	PER LEAF
2	DOCK CLEAT DOOR HANDLE	-	-	-	WHERE NOTED ON DOOR SCHEDULE. PROVIDED BY VENDOR. SEE 1/A903
-	PUSH	-	EXISTING	EXISTING	WHERE NOTED ON DOOR SCHEDULE
-	KICKDOWN HOLDER	-	EXISTING	EXISTING	-
-	CLOSER	-	EXISTING	EXISTING	MUST MEET 5LB. FORCE REQ'T
-	LOCK SET	-	EXISTING	EXISTING	-
HARDWARE GROUP 2 - OFFICE					
3	STANDARD HINGES	MCKINNEY	MPB79 - 4 1/2" X 4 1/2"	US26D	PER LEAF
1	LOCK SET	SCHLAGE	AL53BDC	SAT 626	-
1	WALL DOOR STOP	ROCKWOOD	409	US32D	WHERE NOTED ON DOOR SCHEDULE
3	DOOR SILENCER	ROCKWOOD	608	-	-
HARDWARE GROUP 3 - RESTROOM					
3	STANDARD HINGES	MCKINNEY	MPB79 - 4 1/2" X 4 1/2"	US26D	PER LEAF
1	LOCK SET	SCHLAGE	AL53BDC	SAT 626	-
1	SURFACE CLOSER	FALCON	SC 61 STD Rw PA	689	MUST MEET 5LB. FORCE REQ'T
1	WALL DOOR STOP	ROCKWOOD	409	US32D	WHERE NOTED ON DOOR SCHEDULE
1	DOOR SILENCER	ROCKWOOD	608	-	-
HARDWARE GROUP 4 - SINGLE DOOR EMERGENCY EXIT					
3	STANDARD HINGES	MCKINNEY	MPB91 4 1/2" X 4 1/2"	US32D-NRP	PER LEAF
1	EXIT DEVICE	DETEX	V40 628 EB 94 36"x84"	628	SMALL FORMAT INSTAKEY CORES
1	SURFACE CLOSER	FALCON	SC 71 STD DS	689	MUST MEET 5LB. FORCE REQ'T
1	THRESHOLD	PEMKO	271A 36"	US26D	-
1	WEATHERSTRIPPING	PEMKO	18041CNB 36"	-	AT EXTERIOR LOCATIONS
1	WEATHERSTRIPPING	PEMKO	303AS-36"x84"	-	AT EXTERIOR LOCATIONS
1	RAIN DRIP	PEMKO	346A 40"	-	AT EXTERIOR LOCATIONS
1	VIEWER	ROCKWOOD	622	STNN	-
HARDWARE GROUP 5 - DOUBLE DOOR EMERGENCY EXIT					
3	STANDARD HINGES	MCKINNEY	MPB91 4 1/2" X 4 1/2"	US32D-NRP	PER LEAF
1	FLUSH BOLT	ROCKWOOD	555	US26D	PER LEAF
1	EXIT DEVICE	DETEX	V40 628 EB 94 36"x84"	628	SMALL FORMAT INSTAKEY CORES
1	SURFACE CLOSER	FALCON	SC 71 STD DS	689	MUST MEET 5LB. FORCE REQ'T
1	THRESHOLD	PEMKO	271A 72"	-	-
1	WEATHERSTRIPPING	PEMKO	18041CNB 36"	-	AT EXTERIOR LOCATIONS
1	WEATHERSTRIPPING	PEMKO	18041CNB 96"	-	AT EXTERIOR LOCATIONS
1	WEATHERSTRIPPING	PEMKO	303AS-72"x86"	-	AT EXTERIOR LOCATIONS
1	RAIN DRIP	PEMKO	346A 76"	-	AT EXTERIOR LOCATIONS
1	VIEWER	ROCKWOOD	622	STNN	AT EXTERIOR LOCATIONS
HARDWARE GROUP 6 - SALES TO RECEIVING (ABS)					
1	FACTORY FURNISHED HINGES AND HARDWARE. 8 3/4" JAMB GUARD, OFFSET PIVOT HARDWARE. FACTORY PREPARED RUBBIAIR DOOR. MODEL #TL-250. 14"X16" VISION PANEL, HIGH CLOUD GREY IMPACT PANELS. GREY FACTORY FINISH ON DOORS				CASED OPENING TO BE 6'-1 1/4"X8'-5/8" AND READY TO ACCEPT DOOR IN FRAME.
HARDWARE GROUP 7 - RECEIVING/ SERVICE					
1	FACTORY FURNISHED HARDWARE. FACTORY PREPARED MANUAL "OVERHEAD DOOR" MODEL #625. FINISH WITH SHERWIN WILLIAMS READY MIX ENAMEL. MATCH ADJACENT WALL COLOR. GC SHALL PROVIDE PADLOCK FOR DOOR AS REQUIRED. VERIFY IN FIELD				-

DOOR SCHEDULE

MARK	LOCATION	WIDTH	HEIGHT	TYPE	MAT'L	FINISH	MAT'L	FINISH	HDWR.	FIRE RATING	SIGN DETAIL	REMARKS
01	MAIN ENTRY	3'-0" PR	7'-0"	1	EXIST	EXIST	EXIST	EXIST	HW-1	-	5/A005	VERIFY EXISTING HARDWARE. PROVIDE NEW AS REQUIRED (V.I.F.) PROVIDE NEW DOCK CLEAT DOOR HANDLES/ PULL
02	HALL TO TOILET	3'-0"	7'-0"	2	HM	P-6	HM	P-6	HW-3	-	3/A005	-
03	HALL TO TOILET	3'-0"	7'-0"	2	HM	P-6	HM	P-6	HW-3	-	3/A005	-
04	SALES TO RECEIVING	3'-0" PR	7'-0"	3	HM	-	HM	-	HW-6	-	-	-
05	STAGING TO EXTERIOR	3'-0"	7'-0"	5	EXIST	EXIST	EXIST	EXIST	HW-4	-	5/A005	VERIFY EXISTING HARDWARE. PROVIDE NEW AS REQUIRED (V.I.F.)
06	HALL TO EXTERIOR	3'-0"	7'-0"	5	EXIST	EXIST	EXIST	EXIST	HW-4	-	5/A005	-
07	RECEIVING TO EXTERIOR	8'-0"	8'-0"	7	-	-	-	-	HW-7	-	-	MANUAL OVERHEAD GARAGE DOOR

DOOR TYPE ELEVATIONS (T = TEMPERED GLASS)



ROOM FINISH SCHEDULE

ROOM NAME	ROOM #	CEILING						WALLS						FLOORING						
		MATERIAL	FINISH	HEIGHT / NOTE	MAT-ERIAL	FINISH	NOTES	MAT-ERIAL	FINISH	BASE	NOTES									
SOFT GOODS	101																			
SALES AREA	102																			
RECEIVING/ STAGING	103																			
WOMEN'S TOILET	104																			
MEN'S TOILET	105																			
HALL	106																			

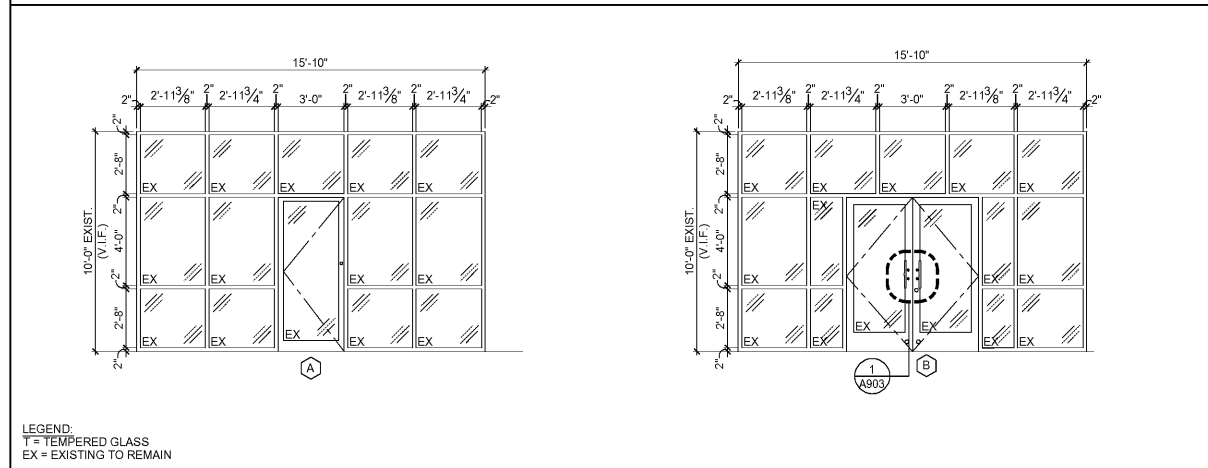
FINISH SCHEDULE

INTERIOR PAINT (EGG SHELL - U.N.O. - SEE FINISH SCHEDULE)		FLOORING		CEILING	
P-5	SHERWIN WILLIAMS READY MIX ENAMEL "WHITE"	CONC.	TRANSPARENT ACRYLIC WATER BASED CURING SEALING & DUST PROOFING COMPOUND. SONNENBORN S. CONCRETE KURZWEIL W	ACT-1	ARMSTRONG (OR EQUAL) 24"X48" MINERAL BASE ACOUSTIC CEILING TILE - PAINT TO MATCH PT-6 (MOLD AND MILDEW INHIBITOR) WASHABLE FACE. PAINT GRID P-6
P-6	SHERWIN WILLIAMS SW 7008 "ALABASTER" (RGB: 238, 235, 225)	CONC.	DISPERSE U.FLOOR VINYL DELUXE NATURAL STAIN 7"X4" STAINK. #B511	ACT-2	ARMSTRONG (OR EQUAL) 24"X48" MINERAL BASE ACOUSTIC CEILING TILE - PAINT TO MATCH PT-6 (MOLD AND MILDEW INHIBITOR). PAINT GRID P-6
P-7	SHERWIN WILLIAMS SW 7665 "WALL STREET"	CONC.	STORE FLOORS #172-703 BLACK 3" PIECES		
P-8	SHERWIN WILLIAMS SW 6204 "SEA SAND"	CONC.	STORE FLOORS #633-701 BLACK 100' COILS		
P-9	SHERWIN WILLIAMS SW 6227 "MEDITATIVE"	CONC.	STORE FLOORS 4" BASE #100-701		
P-19	SHERWIN WILLIAMS "WHITE" DRYWALL PRIMER PRODUCT #28W08150	CONC.	STORE FLOORS WELLS #511		
P-20	SHERWIN WILLIAMS SW 2249 "STORM CLOUD"	CONC.	STORE FLOORS #167-401 COVE STICK 20' PIECES		
P-21	SHERWIN WILLIAMS SW 2249 "LOYAL BLUE"	CONC.	STORE FLOORS #165 BLACK COVE CAP 12' SECTIONS		
P-30	SHERWIN WILLIAMS SW 1812 "AWARD BLUE" (RGB: 36, 71, 126)	CONC.	STORE FLOORS #511 (4MM) WELDING RODS 132 COILS		
P-12	SHERWIN WILLIAMS SW 7523 "BURNISHED BRANDY"	CONC.	STORE FLOORS #511 (4MM) WELDING RODS 132 COILS		

DOOR & HARDWARE NOTES

- ALL INSTAKEY USES SHALL RECEIVE BLOCK CYLINDER HOUSING WITH SMALL FORMAT INTERCHANGEABLE CORES.
- GLAZING IN DOORS SHALL BE SAFETY GLASS CATEGORY I IF 9 SF OR LESS AND CATEGORY II IF MORE THAN 9 SF PER TABLE 2406.2(1) OF FLORIDA BUILDING CODE.
- SAFETY GLAZING REQUIRED IN INDIVIDUAL FIXED OR OPERABLE PANELS ADJACENT TO A DOOR WHERE THE NEAREST EXPOSED EDGE OF THE GLAZING IS WITHIN 24 INCHES ARC OF EITHER VERTICAL EDGE OF THE DOOR IN A CLOSED POSITION AND WHERE THE BOTTOM EXPOSED EDGE OF THE GLAZING IS LESS THAN 60 INCHES ABOVE THE WALKING SURFACE PER SECTION 2406.4(6) OF THE FLORIDA BUILDING CODE.
- ALL DOOR HARDWARE TO COMPLY WITH ACCESSIBILITY GUIDELINES OF JURISDICTIONS HAVING AUTHORITY.
- ALL DOORS IN THE MEANS OF EGRESS SHALL BE SINGLE ACTION RELEASE AND SHALL NOT REQUIRE THE USE OF A KEY OR SPECIAL KNOWLEDGE FROM EGRESS SIDE. NO THUMB LATCHES OR KEYS CYLINDER DEAD BOLTS ALLOWED ON ANY DOORS UNLESS OPERATED.

WINDOW TYPE ELEVATIONS



ROBERT F. VANNEY ARCHITECT

300 ROBERT STREET, STE. 201
SAINT PAUL, MINNESOTA 55101
(612) 222-4842 FAX: (612) 222-3838

consultant

West Marine
500 Westridge Drive
Watsonville, California 95076
p: 831.728.2700 f: 831.761.4220

ISLAND WALK @ PALM COAST
250 PALM COAST PKWY NE
PALM COAST, FL 32137
STORE #TBD

commission number 44-1047

WM 75% 07/07/2017

LL Final
 Permit
 Bidding

DESIGNED BY: ROBERT F. VANNEY
DRAWN BY: ROBERT F. VANNEY
CHECKED BY: ROBERT F. VANNEY

drawing title
DOOR & FINISH SCHEDULE

sheet number
A701