

**FLORIDA ACCESSIBILITY CODE - 2014**

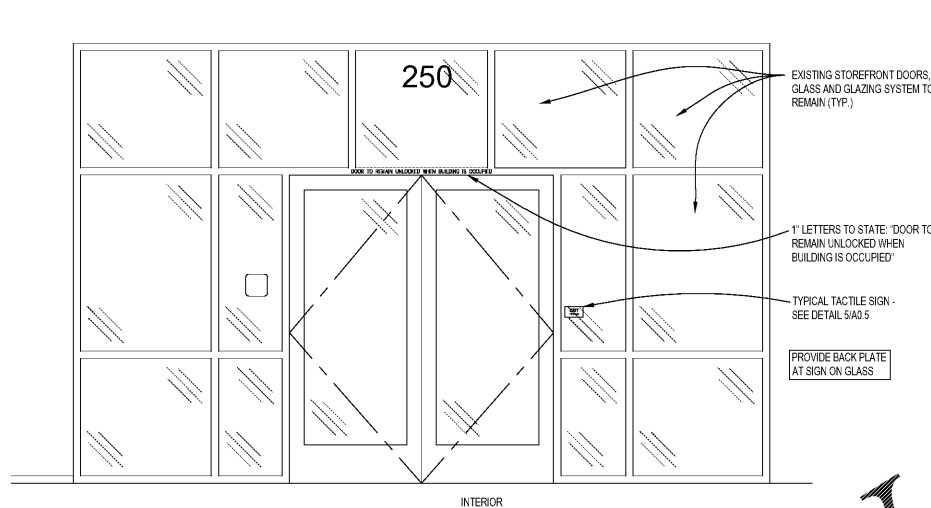
703.2 Raised Characters. Raised characters shall comply with 703.2 and shall be duplicated in Braille complying with 703.3. Raised characters shall be installed in accordance with 703.4.

Advisory 703.2 Raised Characters. Signs that are designed to be read by touch should not have sharp or abrasive edges.

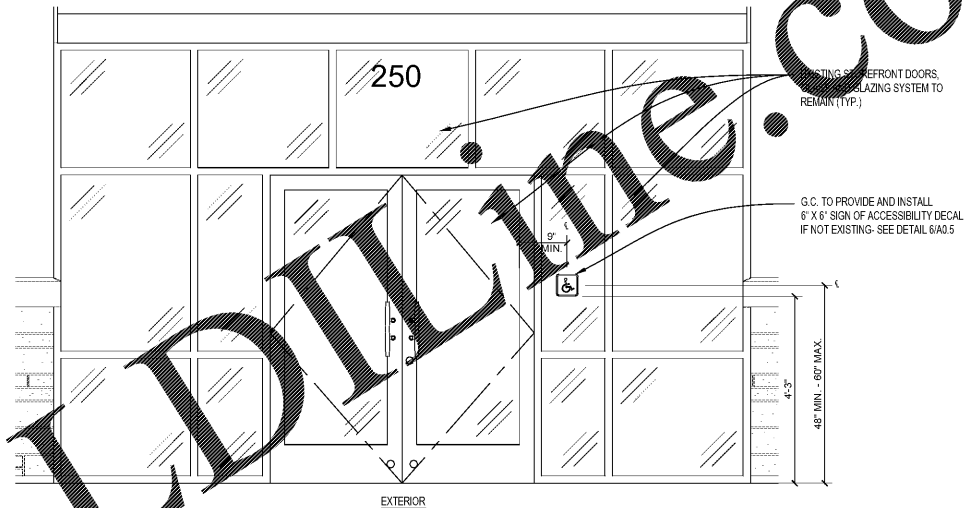
703.2.1 Depth. Raised characters shall be raised  $\frac{3}{32}$  inch minimum above their background.  
 703.2.2 Case. Characters shall be upper case.  
 703.2.3 Style. Characters shall be sans serif. Characters shall not be italic, oblique, script, highly decorative, or of other unusual forms.  
 703.2.4 Character Proportions. Characters shall be selected from fonts where the width of the uppercase letter "O" is 55 percent minimum and 110 percent maximum of the height of the uppercase letter "I".  
 703.2.5 Character Height. Character height measured vertically from the baseline of the character shall be  $\frac{5}{16}$  inch minimum and 2 inches maximum based on the height of the uppercase letter "I".  
 Exception: Where separate raised and visual characters with the same information are provided, raised character height shall be permitted to be  $\frac{1}{2}$  inch minimum.  
 703.2.6 Stroke Thickness. Stroke thickness of the uppercase letter "I" shall be 15 percent maximum of the height of the character.  
 703.2.7 Character Spacing. Character spacing shall be measured between the two closest points of the adjacent raised characters within a message, excluding word spaces. Where characters have rectangular cross sections, spacing between individual raised characters shall be  $\frac{1}{8}$  inch minimum and 4 times the raised character stroke width maximum. Where characters have other cross sections, spacing between individual raised characters shall be  $\frac{1}{16}$  inch minimum and 4 times the raised character stroke width maximum at the base of the cross sections, and  $\frac{1}{8}$  inch minimum and 4 times the raised character stroke width maximum at the top of the cross sections. Characters shall be separated from raised borders and decorative elements  $\frac{1}{8}$  inch minimum.  
 703.2.8 Line Spacing. Spacing between the baselines of separate lines of raised characters within a message shall be 135 percent minimum and 170 percent maximum of the raised character height.  
 703.3 Braille. Braille shall be contracted (Grade 2) and shall comply with 703.3 and 703.4.  
 703.3.1 Dimensions and Capitalization. Braille dots shall have a domed or rounded shape and shall comply with Table 703.3.1. The indication of an uppercase letter or letters shall only be used before the first word of sentences, proper nouns and names, individual letters of the alphabet, initials and acronyms.  
 703.3.2 Position. Braille shall be positioned below the corresponding text. If text is multi-lined, braille shall be placed below the entire text. Braille shall be separated  $\frac{1}{8}$  inch minimum from any other tactile characters and  $\frac{1}{4}$  inch minimum from raised borders and decorative elements.  
 Exception: Braille provided on elevator car controls shall be separated  $\frac{1}{8}$  inch minimum and shall be located either directly below or adjacent to the corresponding raised characters or symbols.  
 703.4 Installation Height and Location.  
 703.4.1 Height Above Finished Floor or Ground. Tactile characters on signs shall be located 48 inches minimum above the finish floor or ground surface, measured from the baseline of the lowest tactile character and 60 inches maximum above the finish floor or ground surface, measured from the baseline of the highest tactile character.  
 Exception: Tactile characters for elevator car controls shall not be required to comply with 703.4.1.  
 703.4.2 Location. Where a tactile sign is provided at a door, the sign shall be located alongside the door at the latch side. Where a tactile sign is provided at double doors with one active leaf, the sign shall be located on the inactive leaf. Where a tactile sign is provided at double doors with two active leaves, the sign shall be located to the right of the right hand door. Where there is no wall space at the latch side of a single door or at the right side of double doors, signs shall be located on the nearest adjacent wall. Signs containing tactile characters shall be located so that a clear floor space of 18 inches minimum by 18 inches minimum, centered on the tactile characters, is provided beyond the arc of any door swing between the closed position and 45 degree open position.  
 Exception: Signs with tactile characters shall be permitted on the push side of doors with closers and without hold-open devices.  
 703.5 Visual Characters. Visual characters shall comply with 703.2 and are accompanied by braille complying with 703.3, they shall not be required to comply with 703.2.5 through 703.5.9.  
 703.5.1 Finish and Contrast. Characters and their background shall have a non-glare finish. Characters shall contrast with their background with either light characters on a dark background or dark characters on a light background.

Advisory 703.5.1 Finish and Contrast. Signs are more legible for persons with low vision when characters contrast as much as possible with their background. Additional factors affecting the ease with which the text can be distinguished from its background include shadows cast by lighting sources, surface glare, and the uniformity of the text and its background colors and textures.

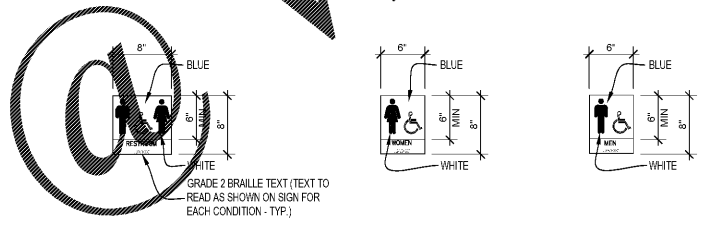
703.5.2 Case. Characters shall be uppercase or lowercase or a combination of both.  
 703.5.3 Style. Characters shall be conventional in form. Characters shall not be italic, oblique, script, highly decorative, or of other unusual forms.  
 703.5.4 Character Proportions. Characters shall be selected from fonts where the width of the upper case letter "O" is 55 percent minimum and 110 percent maximum of the height of the uppercase letter "I".  
 703.5.5 Character Height. Minimum character height shall comply with Table 703.5.5. Viewing distance shall be measured as the horizontal distance between the character and an obstruction preventing further approach towards the sign. Character height shall be based on the uppercase letter "I".  
 703.5.6 Height From Finish Floor or Ground. Visual characters shall be 40 inches minimum above the finish floor or ground.  
 Exception: Visual characters indicating elevator car controls shall not be required to comply with 703.5.6.  
 703.5.7 Stroke Thickness. Stroke thickness of the uppercase letter "I" shall be 10 percent minimum and 30 percent maximum of the height of the character.  
 703.5.8 Character Spacing. Character spacing shall be measured between the two closest points of the adjacent characters, excluding word spaces. Spacing between individual characters shall be 10 percent minimum and 35 percent maximum of character height.  
 703.5.9 Line Spacing. Spacing between the baselines of separate lines of characters within a message shall be 135 percent minimum and 170 percent maximum of the character height.  
 703.6 Pictograms  
 703.6.1 Pictogram Field. Pictograms shall have a field height of 6 inches minimum. Characters and braille shall not be located in the pictogram field.  
 703.6.2 Finish and Contrast. Pictograms and their field shall have non-glare finish. Pictograms shall contrast with their field with either a light pictogram on a dark field or a dark pictogram on a light field.  
 Advisory 703.6.2 Finish and Contrast. Signs are more legible for persons with low vision when characters contrast as much as possible with their background. Additional factors affecting the ease with which the text can be distinguished from its background include shadows cast by lighting sources, surface glare, and the uniformity of the text and background colors and textures.  
 703.6.3 Text Descriptors. Pictograms shall have text descriptors located directly below the pictogram field. Text descriptors shall comply with 703.2, 703.3 and 703.4.



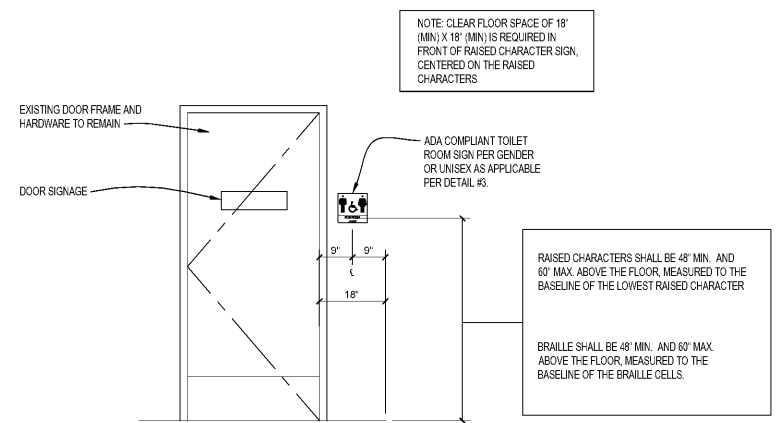
1 RAISED CHARACTER EXIT SIGN LOCATION  
A005 1/2" = 1'-0"



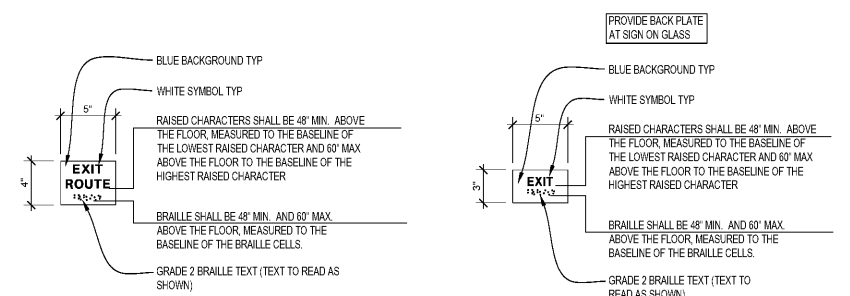
2 ENTRANCE SIGN OF ACCESSIBILITY  
A005 1/2" = 1'-0"



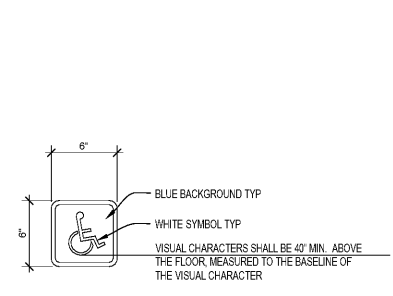
3 TOILET ROOM PLAQUES  
A005 1" = 1'-0"



4 SIGN MOUNTING AT TOILET ROOM DOORS  
A005 1/2" = 1'-0"



5 TACTILE EXIT SIGN PLAQUES  
A005 1 1/2" = 1'-0"



6 SIGN OF ACCESSIBILITY DETAIL  
A005 1 1/2" = 1'-0"

Order Plans

ROBERT F. VANNEY ARCHITECT

3001 ROBERT STREET, STE. 201  
SAINT PAUL, MINNESOTA 55101  
(612) 222-4842 FAX (612) 222-3838

consultant

West Marine  
500 Westridge Drive  
Watsonville, California 95076  
p: 831.728.2700 f: 831.761.4220

ISLAND WALK @ PALM COAST  
250 PALM COAST PKWY NE  
PALM COAST, FL 32137  
STORE #TBD

commission number 44-1047

WM 75% 07/07/2017  
 LL Final  
 Permit  
 Bidding

drawing title  
ACCESSIBILITY DETAILS

sheet number  
A005