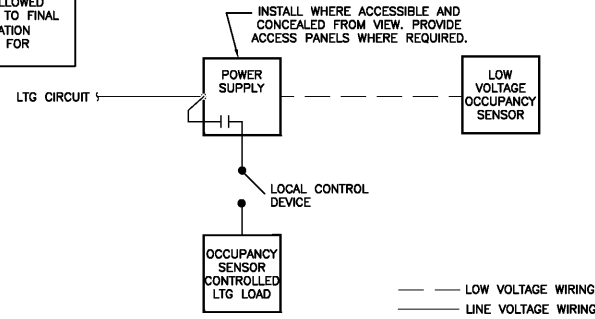


- UPON OCCUPANCY OF SPACE, POWER SUPPLY SHALL ENABLE LIGHTING ZONE TO BE CONTROLLED VIA LOCAL CONTROL DEVICE.
- LOCAL CONTROL DEVICE SHALL BE CAPABLE OF CONTROLLING ALL LIGHTING AT THE SAME TIME.
- IF MOTION IS NOT DETECTED WITHIN SPECIFIED TIME DELAY ALL CONNECTED LIGHTS SHALL TURN OFF.
- FOR MORE INFORMATION REGARDING MODEL NUMBERS, TIME DELAYS, COVERAGE PATTERNS, ETC. REFER TO PLAN NOTES ON LIGHTING PLAN.

THIS CONTROL DIAGRAM IS FOR GENERAL INTENT AND USES WATTSTOPPER REQUIREMENTS AS THE BASIS-OF-DESIGN MANUFACTURER. DIAGRAMS MAY BE DIFFERENT FOR ALLOWED EQUIVALENT MANUFACTURERS. REFER TO FINAL APPROVED MANUFACTURER'S INSTALLATION INSTRUCTIONS AND WIRING DIAGRAMS FOR INSTALLATION.



BACK OF HOUSE LIGHTING CONTROL DETAIL S25

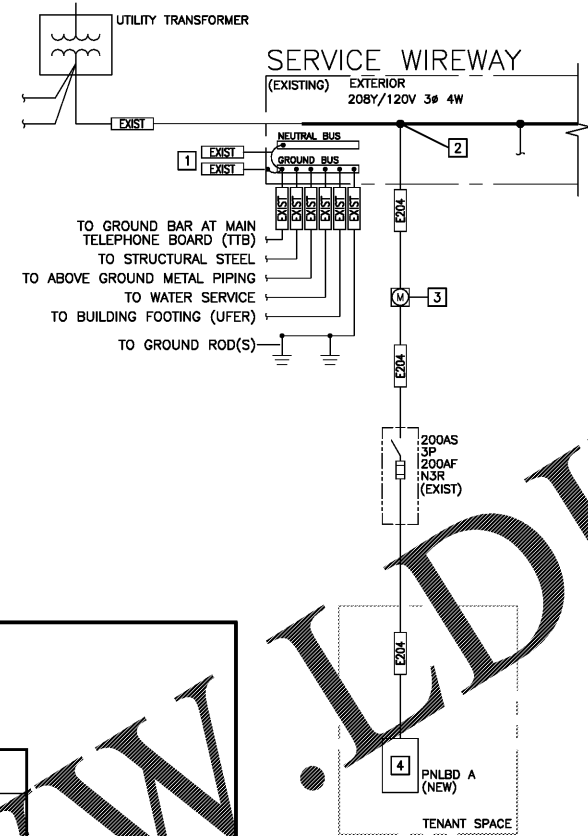
ONE-LINE NOTES:

- CONTRACTOR TO VERIFY THIS IS POINT OF SERVICE ENTRANCE AND NEUTRAL AND GROUND ARE BONDED TOGETHER AND TO THE GROUNDING ELECTRODE SYSTEM.
- EXISTING WIREWAY TAP.
- EXISTING UTILITY METER AND SOCKET RATED FOR 200A.
- PROVIDE NEW 225A, 208Y/120V, 42 CIRCUIT PANEL. PROVIDE CONNECTIONS TO PANEL FROM LANDLORD PROVIDED FEEDER. COORDINATE WITH LANDLORD; EXTEND EXISTING FEEDER CONDUIT AS NEEDED. OBTAIN PANEL AND CIRCUIT BREAKER AIC RATING REQUIREMENTS FROM LANDLORD.

CIRCUIT SCHEDULE:

ALL CONDUCTOR SIZES ARE BASED ON 75 DEG C RATED TERMINATION AND COPPER CONDUCTORS WITH TYPE THHN/THWN-2 INSULATION. WHERE ALUMINUM CONDUCTORS ARE ALLOWED PER SPECIFICATIONS AND FOR TERMINATION OR INSULATION TYPES RATED LESS THAN 75 DEG C, MODIFY SIZES ACCORDING TO NFPA 70.

- EXIST: EXISTING TO REMAIN
- EXIST: EXISTING 200A, (4)#3/0, (1)#6G, 2" C



ELECTRICAL ONE-LINE DIAGRAM P01

GENERAL ONE-LINE NOTES:

- INFORMATION SHOWN ON TENANT DRAWINGS IS INTENDED TO INDICATE MINIMUM REQUIREMENTS TO MEET THE NEEDS OF THE TENANT. VERIFY EXISTING CONDITIONS, CAPACITIES, AND OTHER PROVISIONS BY OTHERS PER TENANT LEASE AGREEMENT PRIOR TO BEGINNING CONSTRUCTION.
- "EXISTING" CONDITIONS SHOWN REFLECT AS-BUILT DRAWINGS.
- REFER TO TENANT LEASE AGREEMENT FOR ADDITIONAL INFORMATION ON ELECTRICAL SERVICE CAPACITY. ANY MODIFICATIONS REQUIRED TO PROVIDE CAPACITY REQUIRED ARE THE RESPONSIBILITY OF THE LANDLORD AND WILL BE PERFORMED UNDER SEPARATE CONTRACT/PERMIT.
- OBTAIN A COPY AND REVIEW LANDLORD'S LATEST EDITION OF THEIR TENANT DESIGN AND CONSTRUCTION CRITERIA AND COMPLY WITH ALL REQUIREMENTS. WHERE CONFLICTS OCCUR BETWEEN THE CRITERIA DOCUMENTS AND THE CONSTRUCTION DOCUMENTS, THE MOST STRINGENT REQUIREMENT WILL GOVERN.
- ALL CONDUCTOR LENGTHS PROVIDED IN THESE DESIGN DOCUMENTS ARE INTENDED SOLELY FOR USE IN THE DESIGN CALCULATIONS BY THE DESIGN PROFESSIONAL UNLESS SPECIFICALLY NOTED OTHERWISE IN THE DOCUMENTS. THEY SHALL NOT BE USED BY CONTRACTORS IN BIDDING OR CONSTRUCTING THE PROJECT. THE CONTRACTOR IS SOLELY RESPONSIBLE FOR THE MATERIAL QUANTITIES REQUIRED TO BID AND CONSTRUCT THE COMPLETE PROJECT.
- "F#" REFERS TO FAULT POINT F# AS DETERMINED IN THE "SHORT CIRCUIT AND VOLTAGE DROP CALCULATIONS" TABLE, DETAIL A01 OF THIS SHEET.
- "V" IN FEEDER TAG INDICATES FEEDER SIZES HAVE BEEN INCREASED FOR VOLTAGE DROP. REFER TO CIRCUIT SCHEDULE FOR FEEDER SIZES.
- PROVIDE COMPLETE TYPED IDENTIFICATION DIRECTORY CARD FOR ALL MAIN AND BRANCH CIRCUITS IN EVERY PANELBOARD DOOR.

ROOM MOUNTING SURFACE FED FROM UTILITY	VOLTS 208Y/120V 3P 4W	BUS AMPS 225	NEUTRAL 100%	AIC VERIFY MAIN BKR MLO LUGS STANDARD	KVA LOAD			CIRCUIT DESCRIPTION	CKT			
					A	B	C					
HT1 1 IT RACK - PLUGMOLD A					0.54			20/1	20/1	0.64	LIGHTING - BUSES+EM	2
3 IT RACK - PLUGMOLD B						0.54		20/1	20/1	0.27	LIGHTING - BOH+EM	4
HT1 5 IT RACK - PLUGMOLD C							0.54	20/1	20/1		UPP POWER	6
7 RECEPT - FLATWIRE POS/TABLE					0.72			20/1	20/1	1.2	RECEPT - COPIER	8
9 RECEPT - FLATWIRE POS/DISP						0.36		20/1	20/1	0.5	RECEPT - CHARGING STATIONS	10
11 SPARE						0		20/1	20/1	0	SPARE	12
13 SPARE					0			20/1	20/1	0	SPARE	14
15 SPARE						0		20/1	20/1	0.36	RECEPT - MANAGER DESK	16
17 RECEPT - ACCESSORY SLAT WALL							0.36	20/1	20/1	0.18	RECEPT - SAFE	18
19 RECEPT - ACCESSORY SLAT WALL					0.36			20/1	20/1	0.56	RP, RR RECEPT	20
21 RECEPT - ACCESSORY SLAT WALL						0.36		20/1	20/1		SIGNAGE	22
23 RECEPT - APC							0.5	20/1	20/1	0.18	RECEPT - SHOW WINDOW	24
25 RECEPT - CREDENZA					0.18			20/1	20/1	0.22	RECEPT - FOH GENERAL	26
27 LIGHT BOX, QUE SCREEN						0.36		20/1	20/1	0	SPARE	28
29 RECEPT - NSC, WINDOW DISP							0.27	20/1	20/1		SPARE	30
31 RTU-2					3.33			40/3	20/1	0.36	RECEPT - BOH GENERAL	32
33						3.33		20/1	20/1	0.42	RECEPT - RTU/DSD	34
35							3.33	20/1	20/1	0.528	EF 1	36
37 RTU-1					3.33			40/3	20/1	0.18	LTG TS/CONTACTOR	38
39								20/2	20/2	1	WH	40
41						3.33						42
					12.1	11.8	11.2				TOTAL CONNECTED KVA	
					101	98.7	93.6				TOTAL CONNECTED AMPS	

LOAD TYPE	CONN. KVA	DEMAND KVA	LOAD TYPE	CONN. KVA	DEMAND KVA
LIGHTING	1.3	2.39 (125%)	CONTINUOUS	2.2	2.75 (125%)
LARGEST MOTOR	10	2.5 (125%)	HEATING	20	20 (100%)
OTHER MOTORS	0.528	0.528 (100%)	NONCONTINUOUS	0.36	0.36 (100%)
RECEPTILES	10.2	10.1 (50%>10)	KITCHEN EQUIP	0	0 (N/A)
			NONCOIN/DIVERSE	0	0 (N/A)
TOTAL KVA:		35.2	TOTAL KVA:		38.6
TOTAL BALANCED DEMAND AMPS: 107					

NOTES:

- C# - VA LIGHTING CONTACTOR #
- GFI - PROVIDE GFCI TYPE CIRCUIT BREAKER
- HT# - PROVIDE HANDLE TIE OR MULTI-POLE CIRCUIT BREAKER FOR CIRCUITS SHARING NEUTRALS
- EM - CIRCUIT SERVES EMERGENCY LIGHTING PROVIDE CIRCUIT BREAKER LOCK ON DEVICE

PANEL BOARD SCHEDULES A01

design-form engineering
 Cert./Lic#s #20020572
 700 W. Pete Rose Way, Suite 460 Cincinnati, OH 45203 Telephone: (513) 421-2210
 Timothy L. Raberding, PE

Sprint

#1408 DURHAM

2707 GUESS RD, SUITE 110
 DURHAM, NC 27705

DATE: 09/26/2017

PROJECT NUMBER: SPR1337

DESIGNED BY: CHAD GLEASON

CHECKED BY: DON RETHMAN

DATE: SEPTEMBER 26, 2017

SHEET: **E4**

\\scabur\architecture\Sprint\virginia markets\sprint-xxx-arlington va (xxxxxx)\US Cds\B) PMS\SPR1336_E2_6/11/2012 1:49:56 PM THOMAS.ABEL

Order Plans