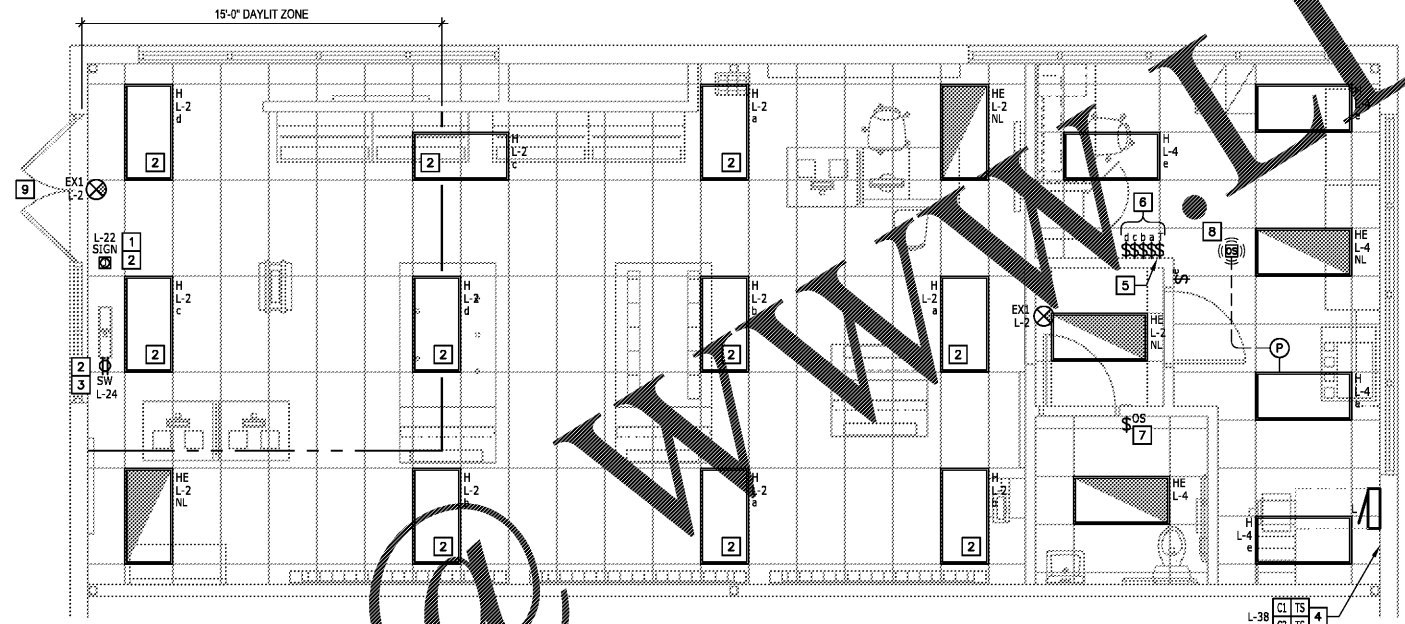


1. EXISTING CONDITIONS WERE TAKEN FROM ORIGINAL DRAWINGS AND SITE VISITS AND MAY NOT REFLECT EXACT "AS-BUILT" CONDITIONS. FIELD VERIFY ALL EXISTING CONDITIONS PRIOR TO SUBMITTING FINAL BIDS. CAREFULLY COORDINATE NEW WORK AND DEMOLITION WITH ALL OTHER DISCIPLINES AND EXISTING CONDITIONS.
2. ALL VOICE, DATA, FIRE ALARM, T-STAT, ETC. WIRING ROUTED EXPOSED ABOVE CEILING SHALL BE PLENUM RATED CABLE SUITABLE FOR INSTALLATION IN RETURN AIR PLENUMS. DO NOT LAY CABLE ON THE CEILING SUPPORT. SUPPORT USING APPROVED SUPPORT DEVICES FROM STRUCTURE.
3. REFERENCE ARCHITECTURAL DRAWINGS FOR EXACT DIMENSIONS AND CEILING HEIGHTS FOR LIGHT FIXTURES SHOWN. COORDINATE AIMING OF FIXTURES AND MOUNTING DETAILS WITH ARCHITECT.
4. CONNECT EMERGENCY LIGHTS, EXIT SIGNS, AND NIGHT LIGHTS TO A CONSTANT HOT PHASE CONDUCTOR, DO NOT SWITCH.
5. PROVIDE WHITE COVER PLATES FOR ALL OUTLETS AND SWITCHES.
6. PROVIDE ACCESSIBLE DEVICE BOX, LOCKABLE SINGLE-POLE DISCONNECT SWITCH, CONDUCTORS, AND CONDUIT FOR EXTERIOR SIGNAGE. PROVIDE A DEDICATED GROUND CIRCUIT TO PANELBOARD AND EXTEND CIRCUIT TO INSIDE FACE OF EXTERIOR ELEVATION. VERIFY EXACT LOCATION AND REQUIREMENTS WITH SIGN VENDOR PRIOR TO CONSTRUCTION. IF THERE ARE MULTIPLE EXTERIOR SIGNAGE LOCATIONS, PROVIDE SIMILAR DEDICATED CIRCUITS PER LOCATION.
7. CIRCUIT THROUGH LIGHTING CONTACTOR AND SWITCH AS INDICATED ON DETAIL A01, SHEET E-5.
8. DUPLEX RECEPTACLE MOUNTED IN CEILING FOR SHOW WINDOW POWER. RECEPTACLES SHALL BE WHITE WITH WHITE COVER PLATE.
9. MOUNT LIGHTING CONTACTORS AND TIMESWITCHES AT STANDARD SWITCH HEIGHT. REFER TO DETAIL A01, SHEET E-5 FOR ADDITIONAL INFORMATION.
10. 2 HOUR TIMER SWITCH FOR SALES FLOOR LIGHTING OVERRIDE. LIGHT SWITCH TO BE BLACK WITH WHITE COVER PLATE. REFER TO DETAIL A01, SHEET E-5.
11. SWITCHES FOR SALES FLOOR LIGHTING. REFER TO DETAIL A01, SHEET E-1 AND DETAIL A01, SHEET E-5.
12. WATTSTOPPER PW-100 (OR APPROVED EQUAL) WALL SWITCH OCCUPANCY SENSOR. MOUNT CENTERLINE OF SENSOR AT 44" AFF.
13. WATTSTOPPER WT-1105 (OR APPROVED EQUAL) CEILING MOUNTED OCCUPANCY SENSOR AND POWER PACK. REFER TO DETAIL S25, SHEET E-4.
14. NORMAL AND EMERGENCY EGRESS LIGHTING OUTSIDE THE TENANT SPACE IS THE RESPONSIBILITY OF THE LANDLORD.

NOT TO SCALE
GENERAL NOTES V25

NOT TO SCALE
LIGHTING KEY NOTES V01

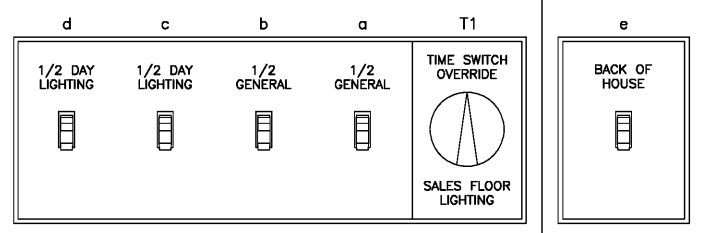


1/4"=1'-0"
LIGHTING PLAN G01

Type	Manufacturer	Catalog Number	Description	Color	Rflctr	Volt	Watts	VA	Mounting	Lamp	Remarks
H	LSI	LED-40-118	2X4 LED EDGE LIT FLAT PANEL	White	White	UNV	45	48	Lay-in	LED	GENERAL ILLUMINATION
HE	LSI	LED-40-118-EM	SAME AS H EXCEPT WITH 750 LUWEN EMERGENCY BATTERY BACK-UP	White	White	UNV	45	48	Lay-in	LED	GENERAL ILLUMINATION
EX1	INTRONIX	EX1-118-LED	UNIVERSAL EXIT WITH 90 MINUTE BACK-UP BATTERY	White	NA	120	5	5	Universal	LED Inc.	EXIT, UNIVERSAL MOUNT

1. Verify voltage of all fluorescent fixtures, emergency and exits, as 120 or 277V per the panelboard schedule.
2. Light fixtures to be centered in short dimension of ceiling tile.
3. All light fixtures to be furnished by the lighting vendor (FSG / American Light (913) 441-4424) and installed by the electrical contractor.

NOT TO SCALE
LIGHT FIXTURE SCHEDULE A14



NOT TO SCALE
SWITCHBANK ELEVATION A01

design-form
engineering
Cert./License #20026572
700 W. Pete Rose Way, Suite 460 Cincinnati, OH 45203 Telephone: (513) 421-3210
Timothy L. Raberding, PE

Sprint
#1408 DURHAM
2707 GUESS RD, SUITE 110
DURHAM, NC 27705

MARK	DATE	DESCRIPTION

PROJECT NUMBER:
SPR1337
DESIGNED BY:
CHAD GLEASON
CHECKED BY:
DON RETHMAN
DATE:
SEPTEMBER 26, 2017
PROJECT:
E1