



KFC

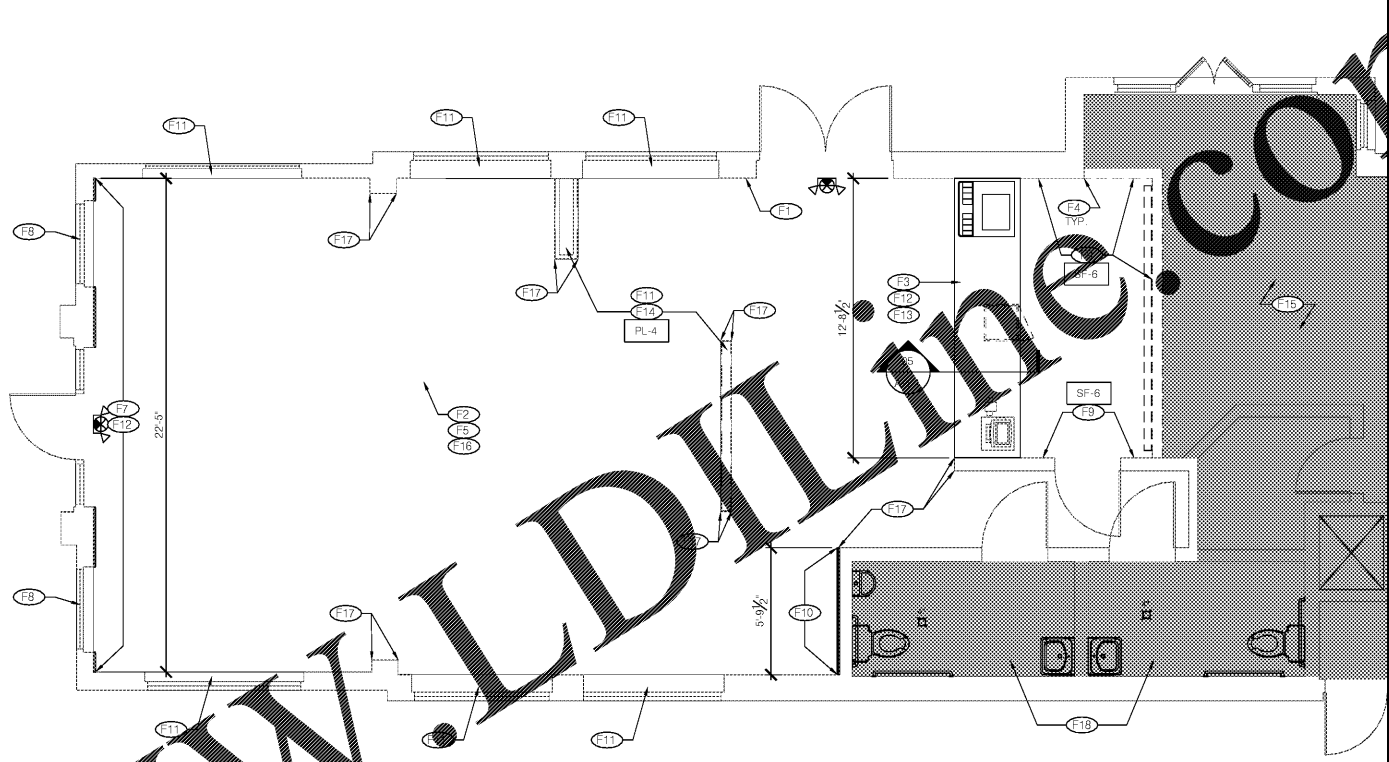
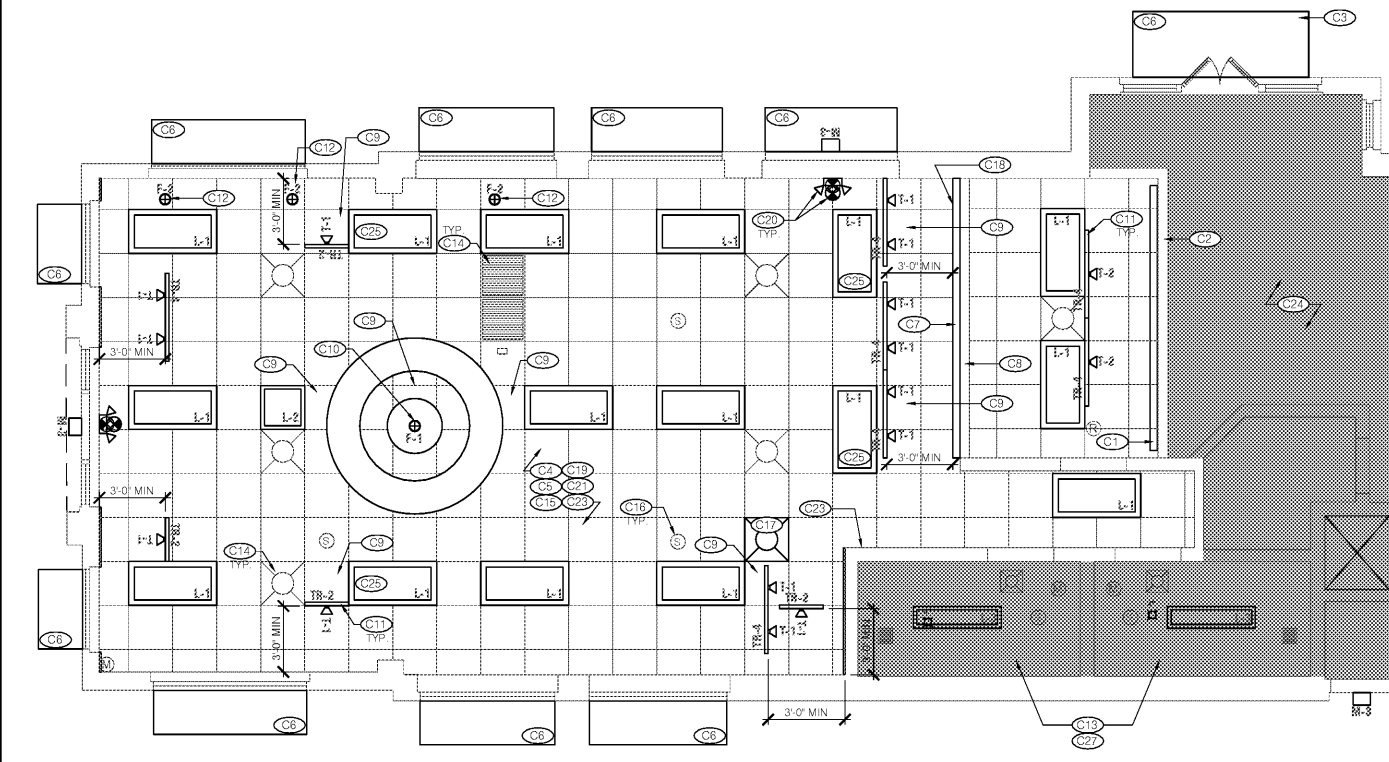
INTERPLAN
ARCHITECTURE
ENGINEERING
INTERIOR DESIGN
PROJECT MANAGEMENT

604 COURTLAND STREET SUITE 100
ORLANDO, FLORIDA 32804
PH 407.645.5008
FX 407.629.9124

SEAL
THIS DOCUMENT IS NOT FOR CONSTRUCTION
UNLESS THE ARCHITECT OR ENGINEER'S
SIGNATURE AND SEAL APPEAR BELOW.

CORPORATE SEAL

CEILING HEIGHT:
9'-0" A.F.F. V.I.F.



LEGEND

EXISTING TO REMAIN

NO WORK IN THIS AREA

NOTE:
REFER TO A-2.0 EXTERIOR
ELEVATIONS FOR WALL
SCONCE LOCATIONS

CEILING PLAN
Scale: 1/4" = 1'-0"

LEGEND

EXISTING TO REMAIN

NO WORK IN THIS AREA

FLOOR FINISH PLAN
Scale: 1/4" = 1'-0"

REFLECTED CEILING PLAN KEY NOTES - ISR BASE

- C1 REINSTALL EXIST. MENU BOARD.
- C2 NEW STAINLESS STEEL CAP AT UNDERSIDE OF EXISTING BULKHEAD
- C3 WIRING OF LIGHTS IN CANOPY BY VENDOR. E.C. SHALL MAKE FINAL CONNECTION TO EXISTING LIGHTING CIRCUIT IN THIS AREA.
- C4 REPLACE EXISTING LIGHT FIXTURES WITH NEW LED LIGHT FIXTURES IN DINING, BEHIND SERVICE COUNTER, RESTROOMS, HALLWAYS
- C5 EXISTING CEILING RECEPTACLES TO REMAIN.
- C6 NEW EXTERIOR AWNING / LOUVER, REFER TO EXTERIOR ELEVATIONS
- C7 CUSTOM MILLWORK, FALX WOOD BEAMS - MODIFY EXISTING SOFFIT/ CEILING AS NEEDED TO ACCOMMODATE NEW BEAM EXISTING
- C8 SOFFIT TO BE PAINTED (P-6, WEDDING VEIL) EGGSHELL FINISH
- C9 NEW CEILING TILE AND INTERMEDIATE GRID TO MATCH EXISTING WHERE LAY-IN LIGHT WAS REMOVED
- C10 NEW BUCKET PENDANT LIGHT AND LIGHT RING. ELECTRICAL CONTRACTOR TO VERIFY CAPACITY ON EXISTING CIRCUITS FOR LIGHTS
- C11 NEW TRACK LIGHTING - POSITION AT 3'-0" FROM WALL U.N.O. ELECTRICAL CONTRACTOR TO VERIFY CAPACITY ON EXISTING CIRCUITS FOR LIGHTS
- C12 NEW PENDANT LIGHTING CENTERED ABOVE TABLE
- C13 PAINT CEILING (P-6)
- C14 EXISTING GRILLES AND DIFFUSERS
- C15 EXIST. CEILING GRID/TILES, REPLACE DAMAGED CEILING GRIDS AS NEEDED TO MATCH EXISTING TILE
- C16 EXISTING SPEAKERS WHITE (P-6)
- C17 RELOCATED DIFFUSER TO ADJUST SILENTLY LINE FEED AND DIFFUSERS
- C18 INSTALL NEW LED SIGN
- C19 EXISTING WIFI ROUTER - SAME LOCATION
- C20 REINSTALL EXISTING BUSHINGS, EXIT SIGNS, EM LIGHTS AS NEEDED
- C21 EXISTING CCTV CAMERAS AND DETECTORS TO BE RELOCATED BY OWNER. VENDOR TO PROVIDE
- C22 REINSTALL EXISTING ELECTRICAL (LUMINAIRES, MENU BOARD BY OWNER VENDOR)
- C23 RELOCATE EXISTING LIGHTS AS NEEDED
- C24 NO WORK IN THIS AREA
- C25 RELOCATED LIGHT FIXTURE LOCATION FOR NEW TRACK LIGHTS, USE CIRCUIT FROM LIGHTING REMOVED
- C26 INSTALL NEW LED LIGHT BULBS IN EXISTING RECESSED CAN LIGHTS IN DINING, BEHIND SERVICE COUNTER AS NEEDED
- C27 RESTROOM DROPPED CEILING TO BE REPLACED WITH GYPSUM HARD BOARD CEILING. INSTALL NEW 1X4 LED LIGHT FIXTURE.

FINISH PLAN KEY NOTES - ISR

- F1 POST MAX. OCCUPANT LOAD ON WALL ADJACENT TO MAIN ENTRY
- F2 SKIM COAT EXISTING WALLS (TO LEVEL 3) WHERE WALL COVERING HAS BEEN REMOVED PRIME AND PAINT WALLS AND PAINT EXISTING WAINSCOT, UNLESS OTHERWISE NOTED
- F3 EXISTING KNEE WALL - MODIFY / REBUILD AS NEEDED TO ACCOMMODATE COUNTERTOP AT 3'3" A.F.F. COVER WITH NEW DECORATIVE PANELS - SERVICE COUNTER & FOUNTAIN UNIT COUNTER
- F4 NEW SURFACE MOUNTED STAINLESS STEEL CORNER GUARDS. PROVIDE AND INSTALL GUARD 18GA 3/4" x 3/4" WIDE TO EXPOSED SURFACES WITH SILICONE ADHESIVE
- F5 EXISTING FLOOR AND BASE TILE TO REMAIN, PATCH FLOOR WITH NEW FLOOR TILE WHERE POSTS, RAILS AND WALLS ARE REMOVED, NEW TILE TO MATCH EXISTING. PATCH AND REPAIR ANY DAMAGED TILE TO THE NEAREST FULL TILE AS NECESSARY
- F6 NEW BLOCKING IN WINDOW OPENING TO SUPPORT DECORATIVE WALL PANELS
- F7 NEW PREFINISHED FLOOR TO CEILING DECORATIVE WALL TRIM PANELS ON EXISTING WALL SURFACE. INSTALL PANELS 1/2" BELOW CEILING FOR VENTILATION PURPOSES
- F8 NEW PRE-PRIMED VENDOR PROVIDED 4" WINDOW TRIM TO BE PAINTED P-6, REFER TO FINISH SCHEDULE
- F9 NEW FRP PANELS OVER EXISTING SIDE WALLS & BULKHEAD TILE
- F10 NEW VENDOR PROVIDED FLOOR TO CEILING 'QUOTE WALL' - REFER TO INTERIOR ELEVATIONS
- F11 NEW WHITE CORIAN WINDOW SILL / WALL CAP [W52]
- F12 INSTALL 6" RUBBER WALL BASE OVER NEW WALL PANEL
- F13 INSTALL NEW SOLID SURFACE COUNTERTOPS
- F14 RE-CLAD DIVIDER WALL WITH NEW LAMINATE PANELS PROVIDED BY MILLWORK VENDOR (PL-4) OVER EXISTING PANELS, and INSTALL CORIAN TOP CAP. REFER TO FINISH SCHEDULE
- F15 NO WORK IN THIS AREA
- F16 INSTALL NEW WAINSCOTING AND CHAIR RAIL
- F17 PREFINISHED ALUMINUM CORNER GUARDS TO MATCH NEW WALL FINISH
- F18 RESTROOMS - PAINT EXISTING CEILING/WALLS [P-4]

GENERAL NOTES - LIGHTING / ELECTRICAL

- A. CONFIRM LIGHTING FIXTURE QUANTITIES WITH SUPPLIER
- B. EMERGENCY AND STANDARD LIGHTING MARKED WITH 'NL' SUBSCRIPT SHALL OPERATE CONTINUOUSLY. PROVIDE UNSWITCHED HOT TO STANDARD AND EMERGENCY BALLASTS
- C. EMERGENCY LIGHTING NOT MARKED WITH 'NL' SUBSCRIPT: PROVIDE UNSWITCHED CONSTANT HOT TO EMERGENCY BALLAST AND SWITCHED HOT TO STANDARD BALLAST
- D. CONTRACTOR SHALL FIELD VERIFY CEILING TYPE AND PROVIDE PROPER MOUNTING HARDWARE
- E. ELECTRICAL CONTRACTOR SHALL VERIFY ALL EXISTING CIRCUITS, ELECTRICAL PANELS AND REUSE EXISTING CIRCUITS WHERE AVAILABLE
- F. CONNECT LIGHTING CIRCUITS TO THE LIGHTING CONTROL PANEL. COORDINATE CONTROL SEQUENCING AND TIME OF DAY SCHEDULING WITH E.C.
- G. EXISTING 2X4 AND 2X6 LIGHTING TO BE REPLACED WITH LED
- H. REFER TO A2.0 FOR ALL EXTERIOR LIGHTS NOT SHOWN ON
- I. NEW LIGHTING TO BE COORDINATED WITH EXISTING MECHANICAL
- J. EXISTING ELECTRICAL PANEL LOCATIONS & NEW CIRCUITS SHALL BE VERIFIED. CONTRACTOR SHALL COORDINATE & VERIFY FINAL ELECTRICAL WITH LIGHTING / SIGNAGE SUPPLIERS
- K. PROVIDE ESCUTCHEOS, PLATES AND SEALS AT ALL UTILITY PENETRATIONS OF WALLS, CEILINGS, AND FLOORS. DO NOT USE PLUG OR EXPANDING TIE FOR SEALANT
- L. ALL WIRING TO BE PER INSTALLATION REQUIREMENTS SIZED FOR 100% MAX FILL PER NEC
- M. RELOCATED DEVICES TO BE ROUTED IN FLEXIBLE METAL CONDUIT.
- N. E.C. IS RESPONSIBLE FOR FIELD VERIFYING THE EXISTING ELECTRICAL CAPACITY AND CONFIRMING THAT THE NUMBER OF SPACES AT THE PANELS IS ADEQUATE FOR THE ADDITION/RELOCATION OF THE SERVICES SHOWN. G.C. TO NOTIFY KFC PM IF EITHER SERVICE OR NUMBER OF SPACES IS FOUND TO NOT MEET THE NECESSARY REQUIREMENTS
- O. E.C. SHALL PROVIDE J-BOX FOR SIGNAGE BY SIGN VENDOR. FINAL CONNECTION TO BUILDING POWER BY E.C.
- P. E.C. SHALL PROVIDE J-BOX FOR NEW EXTERIOR LIGHT FIXTURE. FINAL CONNECTION TO BUILDING POWER BY E.C.
- Q. E.C. SHALL COORDINATE EXACT ROUTING OF ALL NEW AND RELOCATED CIRCUITS. FIELD VERIFY EXISTING CONDITIONS. ALL WORK AND WIRING PER NEC INSTALLATION REQUIREMENTS. ALL WORK TO BE CONCEALED. SURFACE MOUNT RACEWAYS ARE NOT PERMITTED
- R. EXTERIOR DOOR CLOSERS SHALL BE ADJUSTED TO HAVE A MAXIMUM 5 LBS OPENING FORCE
- S. IF PROJECT IS IN CALIFORNIA: NOTE: ALL CONTROLS SHALL BE BROUGHT UP TO CURRENT CODE & TITLE 2 REQUIREMENTS.

LIGHTING SCHEDULE

NO.	QTY	LOCATION	MFG/CATALOG NUMBER	DESCRIPTION	WATTS/ VOLTS
D-3	2	SALES FLOOR	CONTECH LV9185-36WATT (POUSING) CONTECH C19326P	2' LOW VOLTAGE DOWNLIGHT WITH WHITE FULLY ADJUSTABLE TRIM	9 WATTS / 120 VOLTS
F-1	1	PART OF IS-1	TECH NOTED SCOP N-36 R/B / 700TMR0-3-T-B	6000 PENDANT 6" WHITE CORD WITH BLACK MODERN SOCKET	3 WATTS / 120 VOLTS
F-2	3	SALES FLOOR	MINKA 2260-84	GLASS PENDANT WITH BRUSHED NICKEL FINISH MEDIUM BASE SOCKET	3 WATTS / 120 VOLTS
T-1	14	SALES FLOOR	JUNO R90033CHVNH	VERTICAL INTEGRATED LED TRACK LIGHT WHITE FINISH 3000K HI-CRI 23 DEGREE BURNING BEAM	10 WATTS / 120 VOLTS
T-2	2	MENU BOARD LIGHT	CONTECH CTL18V3CZP	VERTICAL INTEGRATED LED WALL WASHER TRACK LIGHT 3000K HI-CRI	28 WATTS / 120 VOLTS
TR-4	7	SALES FLOOR	CONTECH TR-4	SINGLE CIRCUIT LINE VOLTAGE TRACK WHITE FINISH	4 WATTS / 120 VOLTS
L-1	16	SALES FLOOR RECESSED TROFFER	MODERN MPREL24LED30DMVWH35 MODERN SAKT18MPREL	2X4 LED EDGE LIT FLAT PANEL 3500K	4 WATTS / 120 VOLTS
L-3	2	RESTROOM RECESSED TROFFER	MODERN MPREL14LED30DMVWH35 MODERN SAKT18MPREL	1X4 LED EDGE LIT FLAT PANEL 3500K WITH FLANGE KIT	37 WATTS / 120 VOLTS
M-3	4	WALL SCONCE	PAB WFL520V	EXTERIOR RATED LED WALL PACK 3000K BRONZE FINISH	30 WATTS / 120 VOLTS
E-1	17	EXTERIOR LIGHTS	AMERLUX WAF105BLK-230FH AMERLUX WAF16LDS MTRBLK-30IN BRACKET AMERLUX WAF16LDS MTRBLK-30IN BRACKET	BRACKET ARRAY LED FLOOD LIGHT 3000K; BLACK FINISH WITH CUSTOM 30" ARM BRACKET BLACK FINISH HORIZONTAL WIDE SPOT BEAM	24 WATTS / 120 VOLTS
E-2	3	BANNER LIGHT EXTERIOR	AMERLUX WAF16LDS MTRBLK-48IN BRACKET	BRACKET ARRAY LED FLOOD LIGHT 3000K; BLACK FINISH WITH CUSTOM 48" ARM BRACKET BLACK FINISH HORIZONTAL WIDE SPOT BEAM	31 WATTS / 120 VOLTS

FINISH SCHEDULE

MARK	DESCRIPTION	MFG / CONTACT	MODEL #/COLOR	REMARKS
T-1	FLOOR TILE	CREATIVE MATERIALS CORPORATION	CREATIVE MATERIALS CORPORATION	SERIES: SANDERS COLOR: GOLD FFINISH: X-GRP SIZE: 12"x12" GROUT JOINTS: 3/16"
T-2	FLOOR TILE	CREATIVE MATERIALS CORPORATION	CREATIVE MATERIALS CORPORATION	SERIES: SANDERS COLOR: PATINA FFINISH: X-GRP SIZE: 12"x12" GROUT JOINTS: 3/16"
B-1	COVE BASE	CREATIVE MATERIALS CORPORATION	CREATIVE MATERIALS CORPORATION	SERIES: SANDERS COLOR: PATINA FFINISH: X-GRP SIZE: 1/2" x 1/2" GROUT JOINTS: 3/16"
GR0UT 1	FLOOR GROUT	CREATIVE MATERIALS CORPORATION	MARLETTI	TYPE: SURE TREAD QUARRY COLOR: RED 0081 SIZE: 6"x6" GROUT: MARLETTI #47 CHARCOAL
GR0UT 2	FLOOR GROUT	CREATIVE MATERIALS CORPORATION	MARLETTI	TYPE: SURE TREAD QUARRY COLOR: RED 0081 SIZE: 6"x6" GROUT: MARLETTI #47 CHARCOAL
B-2	BETWEEN COUNTER, DIVIDER WALLS, RED WALL, KITCHEN WALLS, PANELS	JOHNSONITE	SCOTT BERTZMEYER P: (800) 896-8918 ext 519 C: (713) 254-9791 scott.bertzmeyer@johnsonite.com	MELWORK WALLBASE MANDALAY #7 TOELESS 20 CHARCOAL 37P Wx 2 H
		MARLITE	DAN EGBERS P: (330) 342-6621 C: (330) 260-7633 dgebr@marlite.com	FP-100 WHITE BOH

MARK	DESCRIPTION	MFG / CONTACT	MODEL #/COLOR	REMARKS
SF-4	WAINSCOT	MARLITE	DAN EGBERS P: (330) 342-6621 C: (330) 260-7633 dgebr@marlite.com	PREFINISHED - P6 WEDDING VEIL PLANS S2 10x10x2 2" RUN VERTICAL ON WALL USE INTERIOR CHAIR RAIL
SF-5	WALL PANELS	MARLITE	DAN EGBERS P: (330) 342-6621 C: (330) 260-7633 dgebr@marlite.com	FRP PANELS LAFALOMA SYMTRIX 10' x 4' @ 90° TILE RUNNING BOND PATTERN
SF-6	WALL PANELS	MARLITE	DAN EGBERS P: (330) 342-6621 C: (330) 260-7633 dgebr@marlite.com	FRP PANELS WHITE MATTE SYMTRIX 10' x 4' @ 90° SUBWAY TILE RUNNING BOND PATTERN
	CHAIR RAIL	MARLITE	DAN EGBERS P: (330) 342-6621 C: (330) 260-7633 dgebr@marlite.com	PREFINISHED - P6 WEDDING VEIL WOOD CHAIR RAIL
W52	WINDOW SILL KNEE WALL	DU PONT CORIAN	OHIO VALLEY SUPPLY COMPANY P: (513) 581-8200 C: (513) 582-2628 bob.ros@ohiovc.com	TERRA COLLECTION WHITE JASME 1/2" THICK
	DOOR	MARLITE	MARLITE	MARLITE HIGH PRESSURE LAMINATE (HPL)
	DOOR FRAME	MARLITE	MARLITE	MARLITE ALUMINUM ADJUSTABLE FRAMES (AAT) SATIN FINISH - MODEL 200 W/ WINDRES
	DOOR HARDWARE	MARLITE	MARLITE	PUSH/PULL HARDWARE - CLOSER ALUMINUM KICKPLATES - BOTH SIDES
	DOOR HARDWARE	YALE	LOCKNET NATIONAL ACCOUNT #88 432-6113 www.locknet.com	LOCKNET PAINT # 1488884 - LEVER STYLE AND PREPARED FOR INTERCHANGEABLE KEY SYSTEM
	DOOR LAMINATE	PIONITE	180	PIONITE - WBS5 YEACH COBBLES INTERIOR DOORS