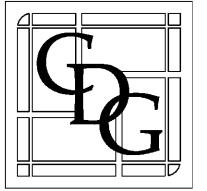




**KFC**



**CORPORATE  
DESIGN +  
DEVELOPMENT  
GROUP, LLC**  
(A DIVISION OF THE W+T GROUP, LLC)  
2075 PRATUM AV.  
HOFFMAN ESTATES, ILLINOIS 60192  
PH. 224 293 6960  
FAX 224 293 6966  
WWW.CDG-LLC.COM  
© COPYRIGHT 2017  
CDDG JOB# D17071  
SOUTH CAROLINA DESIGN FIRM # 101322  
EXP: 06/21/2017



DATE: 06/10/2017 EXP: 06/30/2019

**DRAWING SUBMITTALS**

Revision	Mark	Date	By
03/07/2017	MP		
04/19/2017	MP		
04/25/2017	SC		
05/02/2017	AMS		
06/13/2017	PM		

PER CLIENT COMMENTS

PER PZ COMMENTS

REVISOR PER CITY COMMENTS

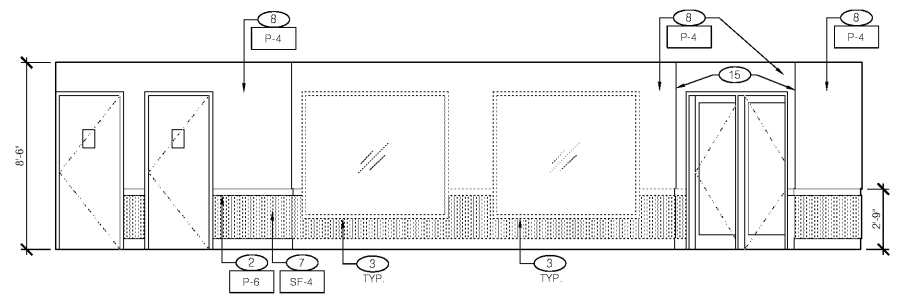
**APPROVED FOR  
CONSTRUCTION**  
9-8-2017 JS

PROJECT TITLE  
**"K-32 SERIES 6000  
TO AMERICAN SHOWMAN"  
TEMPLATE VERSION  
RELEASE 2.0 JAN. 2016**

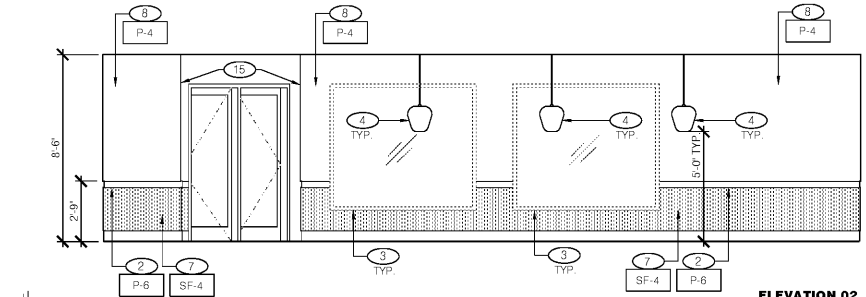
INCENTIVE SCOPE  
215 E. LIBERTY ST.  
SUMTER, SOUTH CAROLINA 29150  
COMMISSION NO. J860021  
SHEET TITLE

FIXTURE / GRAPHIC  
PLACEMENT PLAN &  
INTERIOR  
ELEVATIONS

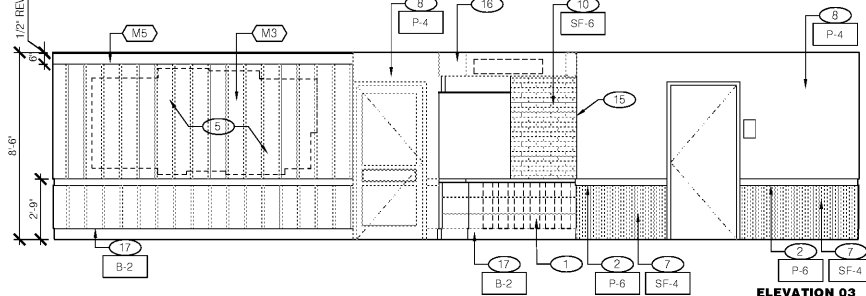
SHEET NO.  
**A-1.1**



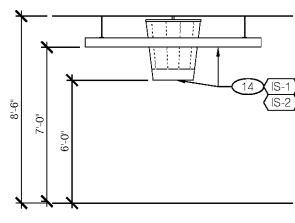
**ELEVATION 01**  
Scale: 1/4" = 1'-0"



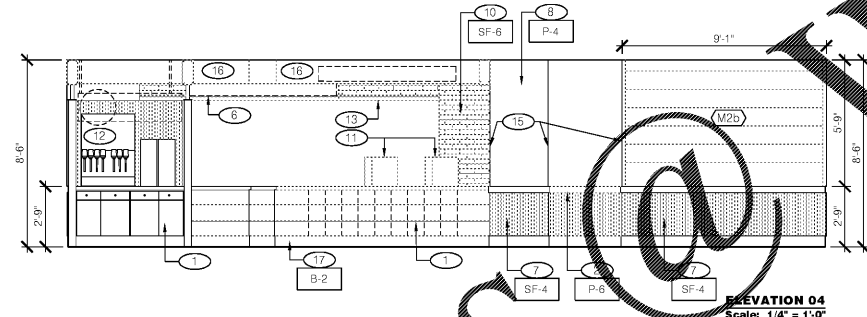
**ELEVATION 02**  
Scale: 1/4" = 1'-0"



**ELEVATION 03**  
Scale: 1/4" = 1'-0"



**ELEVATION 05**  
Scale: 1/4" = 1'-0"



**ELEVATION 04**  
Scale: 1/4" = 1'-0"

**LEGEND**

	EXISTING TO REMAIN
	PROVIDE NEW TOP ON EXISTING STEEL
	NO WORK IN THIS AREA

**NOTE:**  
VERIFY ALL STEEL POST DIMENSIONS IN FIELD

**FIXTURES & GRAPHICS PLACEMENT PLAN**  
Scale: 1/4" = 1'-0"



**IMAGE COMPONENT SCHEDULE (CONT'D)**

TAG	QTY.	ITEM DESCRIPTION
G1	1	"KITCHEN" SIGN
G2	1	CHALK BOARD - PRINTED
G3	1	REAL MEALS GUARANTEE
G4	1	SECRET PROCESS ART
G5	1	PEPSI FILLING STATION SIGN
G6	1	FOCAL WALL ART
G7a	1	POSTER ARTWORK - "SOUTHERN INSPIRED"
G7b	1	POSTER ARTWORK - "SANDERS FOR SENATOR"
G7c	1	POSTER ARTWORK - "COLONEL 101"
G7d	1	POSTER - "NOT CHICKEN SALESMAN"
G7e	1	POSTER ARTWORK - "PRESSURE COOKER"
G7f	1	POSTER ARTWORK - "BUCKET LIST"
G8	1	"THANKS" MESSAGE
G9a	3	STORE HOURS - ENTRY DOOR
G9b	1	STORE HOURS - DT WINDOW
G9c	1	STORE HOURS - SPEAKER POST
G10a	1	RESTROOM SIGNS - LADIES
G10b	1	RESTROOM SIGNS - GENTS
G11	1	COLONEL'S OFFICE SIGN
G12	2	RESTROOM MIRROR MESSAGE
G15a-f	1 EA	BOH ART

**IMAGE COMPONENT SCHEDULE (XX)**

TAG	QTY.	ITEM DESCRIPTION
IS-1	1	BUCKET
IS-2	1	RING CEILING ELEMENT
D1	2	SANDERS BOOTH - SINGLE
D2	3	SANDERS BOOTH DOUBLE
D3	2	TRASH UNIT - SINGLE
D5a	1	TABLE TOP - 21" X 24"
D5b	4	TABLE TOP - 24" X 42"
D5c	3	TABLE TOP - 24" X 42" HC W/ SYMBOL
C1	32	CAFE DINING CHAIRS
M1	N/A	20'-8"
M2b	1	N/A
M3	N/A	13'-7"
M5	N/A	13'-7"

**FIXTURES & GRAPHICS KEY NOTES:**

- EXISTING P.O.S. EQUIPMENT - INCLUDES EXISTING OR NEW UNDER COUNTER CASH DRAWER BRACKET
- RE-INSTALL EXISTING ICE MACHINE & BEVERAGE DISPENSER - SEE SHEET D1.0
- EXISTING SAFE
- REPLACE EXTERIOR/INTERIOR BRANDED, PLASTIC DOOR PANEL WITH PRE-FINISHED PANEL TO MATCH DOOR FRAME
- EXISTING SECURITY MONITOR, RELOCATE AS NECESSARY FOR NEW SERVICE COUNTER LAYOUT
- CUSTOM MILLWORK PROVIDED BY VENDOR
- REINSTALL EXISTING "KFC FOUNDATION" ARTWORK
- PAINT EXISTING TABLE TOP POSTS - MATTE BLACK

\*\* COORDINATE EXACT GRAPHIC LOCATIONS AND HANGING INSTRUCTIONS WITH VENDOR SPECS

**INTERIOR ELEVATION KEY NOTES**

- |  |   |   |
|--|---|---|
| <ol style="list-style-type: none"> <li>NEW SERVICE COUNTER OVER EXISTING KNEE WALL</li> <li>CHAIR RAIL PRE-PRIME BY VENDOR, INSTALL WITH REVEAL TO M3</li> <li>VENDOR PROVIDED WINDOW SILL, JAMB AND HEADER RETURNS ON RED WAINSCOT ABOVE P-6</li> <li>NEW PENDANT LIGHT FIXTURES @ 5'-0" A.F.F. - SEE CEILING PLAN</li> <li>VENDOR PROVIDED FRAMED ARTWORK, USE PROVIDED TEMPLATE TO INSTALL</li> <li>EXISTING MENUBOARD</li> </ol> | <ol style="list-style-type: none"> <li>INSTALL NEW WAINSCOT</li> <li>SKIM COAT EXISTING WALLS (TO LEVEL 3), PRIME AND PAINT ABOVE CHAIR RAIL</li> <li>EXISTING GOFF IT (FACE AND UNDERSIDE) TO BE PAINTED P-4</li> <li>NEW FRP PANEL OVER EXISTING TILE</li> <li>EXISTING POS EQUIPMENT</li> <li>EXISTING PEPSI DISPENSER / ICE MACHINE</li> <li>STAINLESS STEEL HEADER CAP ON EXISTING BULKHEAD</li> </ol> | <ol style="list-style-type: none"> <li>NEW SUSPENDED BUCKET GRAPHIC ELEMENT</li> <li>NEW SURFACE MOUNTED CORNER GUARDS</li> <li>NEW ORDER COUNTER FAUX BEAMS OVER-HEAD</li> <li>NEW 6" WALL BASE</li> </ol> |
|--|---|---|
- NOTE: REFER TO FINISH SCHEDULE ON SHEET A-1.0

PROJECT: 215 E. LIBERTY ST., SUMTER, SOUTH CAROLINA. ALL INFORMATION CONTAINED HEREIN IS THE PROPERTY OF CDG-LLC. NO PART OF THIS DOCUMENT IS TO BE REPRODUCED OR TRANSMITTED IN ANY FORM OR BY ANY MEANS, ELECTRONIC OR MECHANICAL, WITHOUT PERMISSION IN WRITING FROM CDG-LLC.  
 PLOTTED: Thursday, August 10, 2017 3:32:01 PM

Order Plans @ [www.wldline.com](http://www.wldline.com)