



KFC



CORPORATE DESIGN + DEVELOPMENT GROUP, LLC (A DIVISION OF THE W-T GROUP, LLC) 2075 PRATIM AVENUE, HOFFMAN ESTATES, ILLINOIS 60192 PH. 224 293 6960 FAX 224 293 6966 WWW.CDG-LLC.COM © COPYRIGHT 2017 CDDG JOB# D17071 SOUTH CAROLINA DESIGN FIRM # 101322 EXP: 06/21/2017



DATE: 06/19/2017 EXP: 06/30/2019

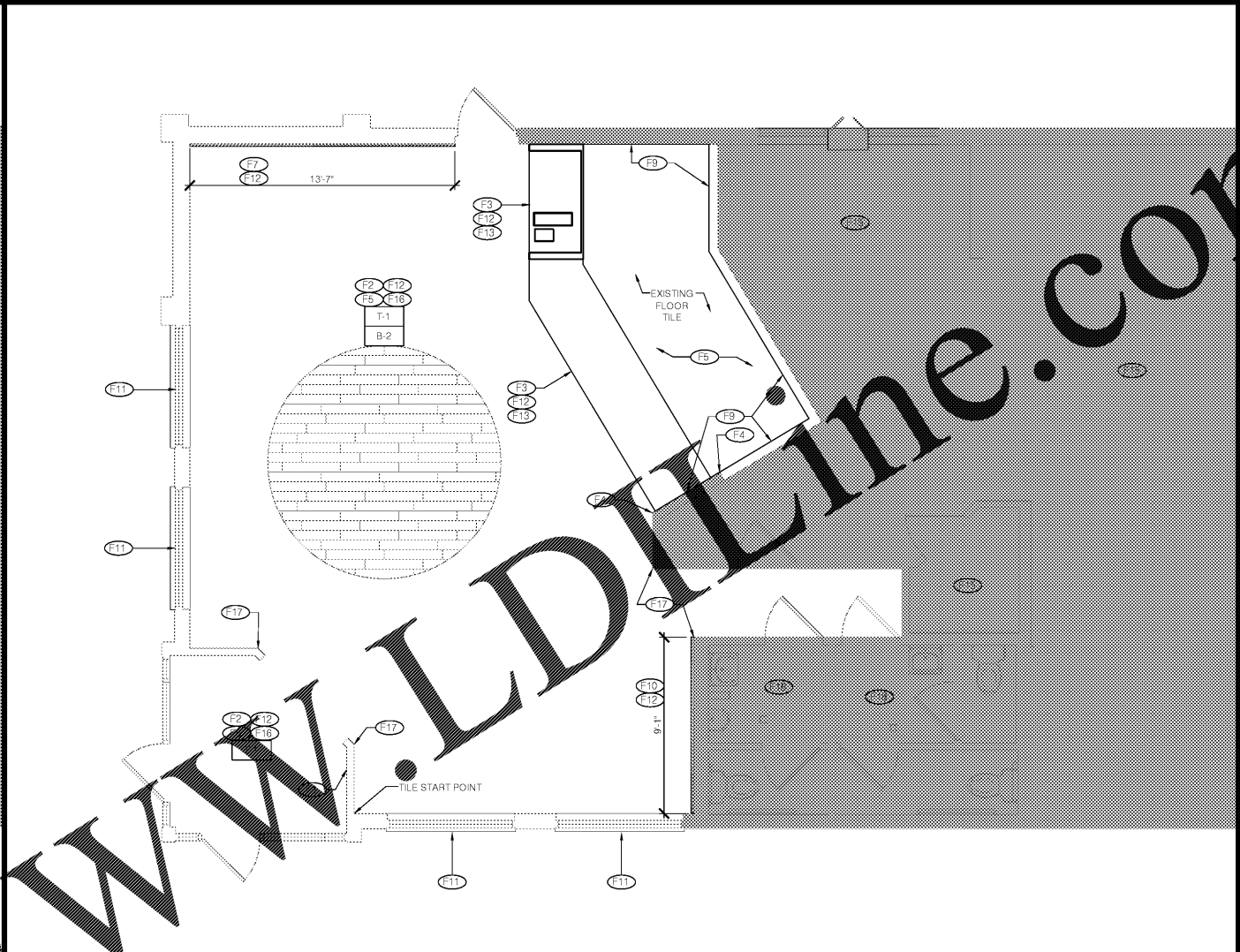
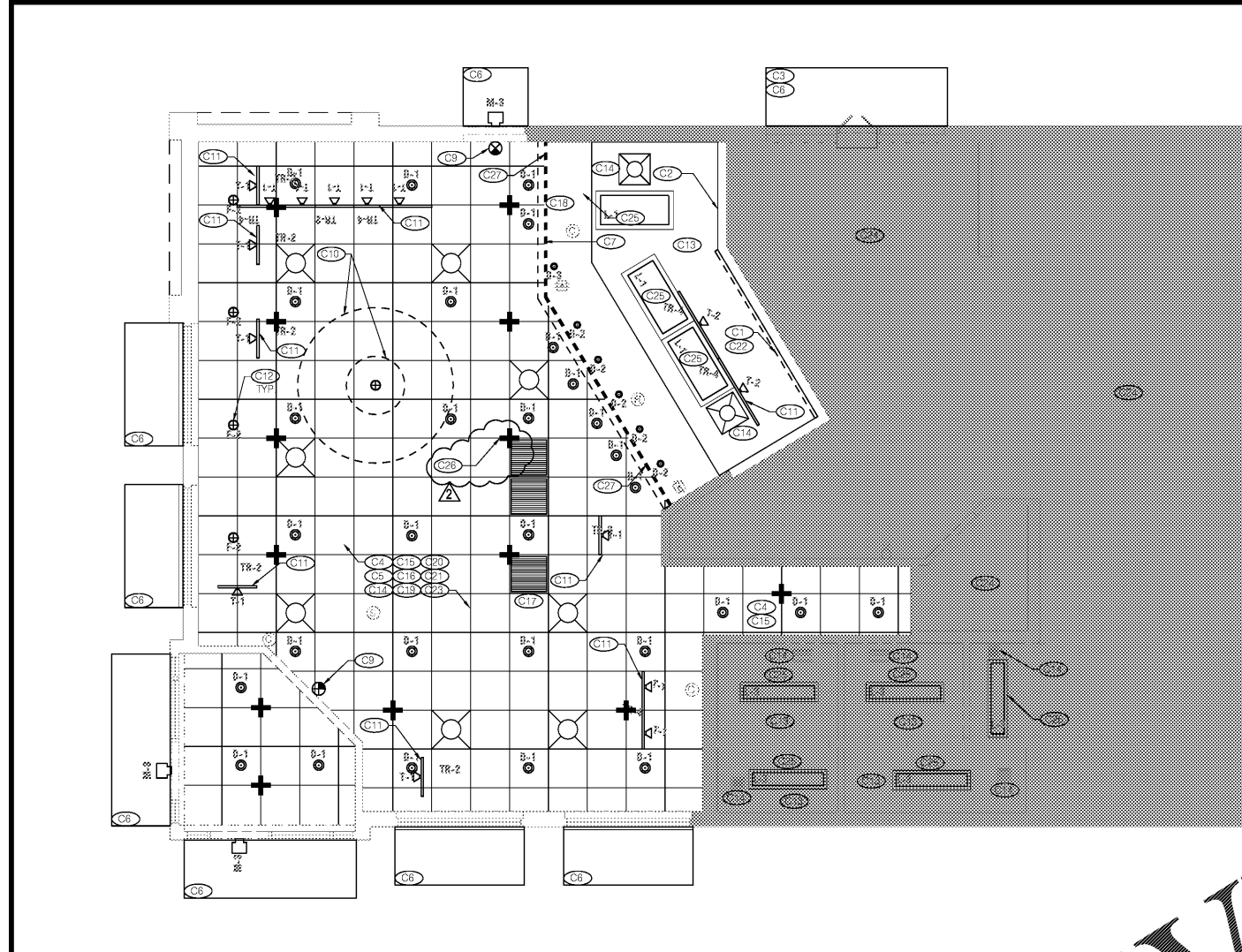
Table with columns: Revision Mark, Date, By. Includes entries for design development, review set, and client comments.

APPROVED FOR CONSTRUCTION 9-8-2017 JS

PROJECT TITLE: "K-32 SERIES 6000 TO AMERICAN SHOWMAN" TEMPLATE VERSION RELEASE 2.0 JAN. 2016 INCENTIVE SCOPE 215 E. LIBERTY ST. SUMTER, SOUTH CAROLINA 29150 COMMISSION NO. J860021 SHEET TITLE

FLOOR FINISH & CEILING PLANS

SHEET NO. A-1.0



LEGEND: Symbols for existing to remain and no work in this area.

NOTE: REFER TO A-2.0 EXTERIOR ELEVATIONS FOR WALL SCIENCE LOCATIONS

DINING AREA CEILING HEIGHT: 8'-6" A.F.F. CEILING PLAN Scale: 1/4" = 1'-0"

LEGEND: Symbols for existing to remain and no work in this area.

FLOOR FINISH PLAN Scale: 1/4" = 1'-0"

REFLECTED CEILING PLAN KEY NOTES: List of notes C1 through C29 detailing lighting and ceiling work.

FINISH PLAN KEY NOTES: List of notes F1 through F14 detailing floor finish and wall work.

GENERAL NOTES - LIGHTING / ELECTRICAL: List of notes A through Q regarding electrical and lighting requirements.

LIGHTING SCHEDULE: Table with columns for NO., QTY., LOCATION, MFG/CATALOG NUMBER, DESCRIPTION, and WATTS / VOLTS.

FINISH SCHEDULE: Table with columns for MARK, DESCRIPTION / LOCATION, MFG / CONTACT, MODEL # / COLOR, REMARKS, and other details.

Vertical text on the left edge: PLOTTED: Thursday, August 10, 2017 3:31:48 PM