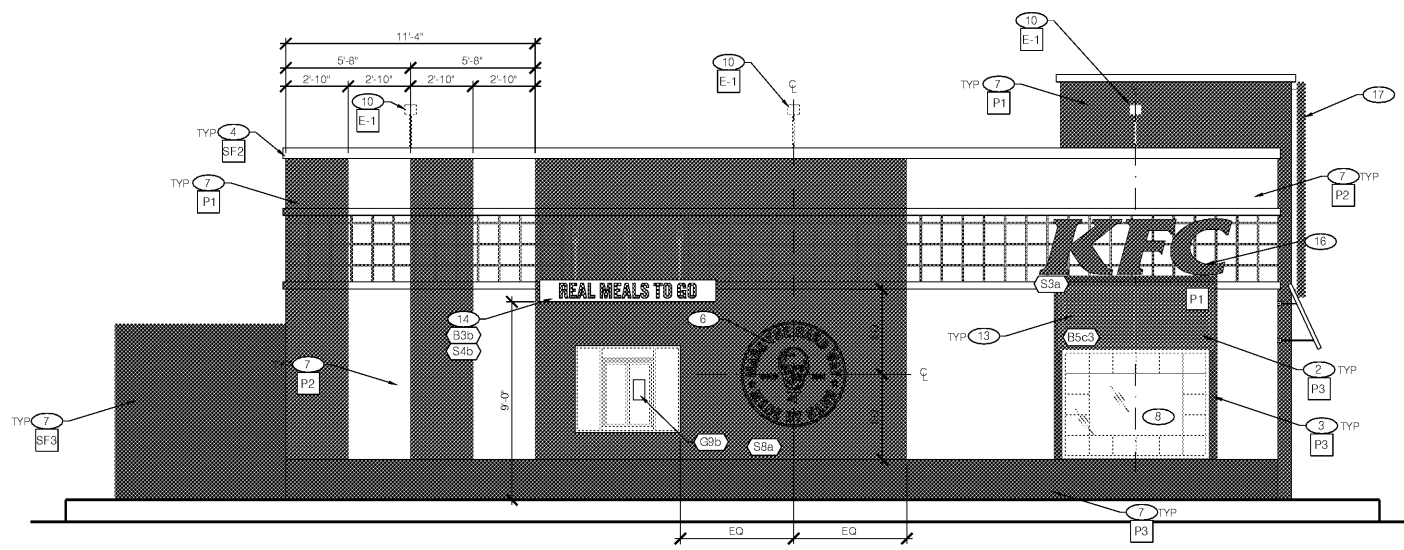
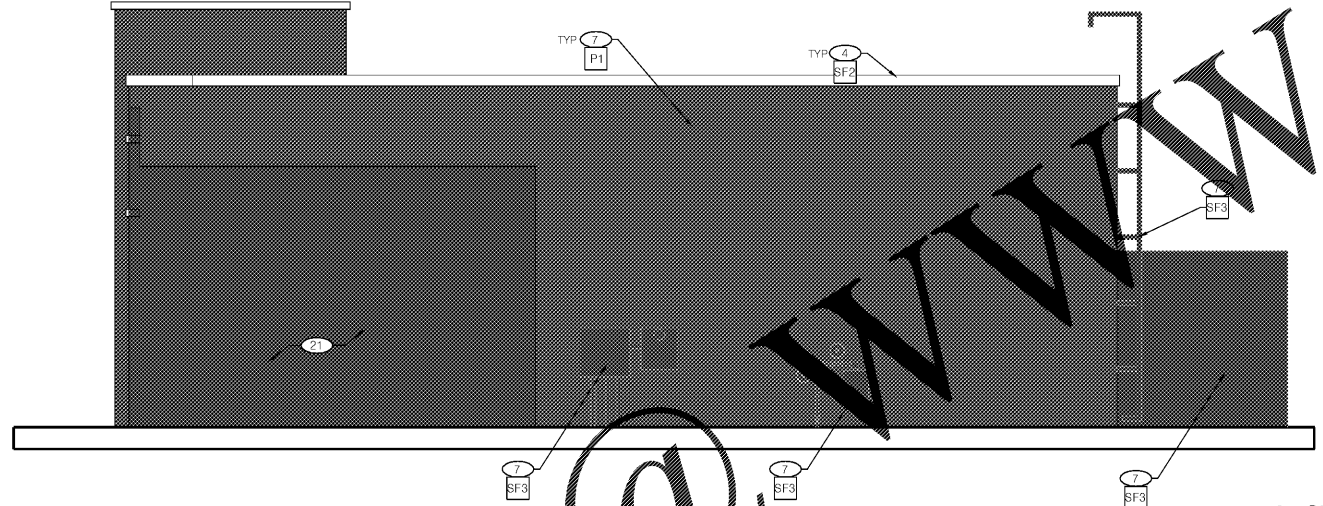


GENERAL NOTES

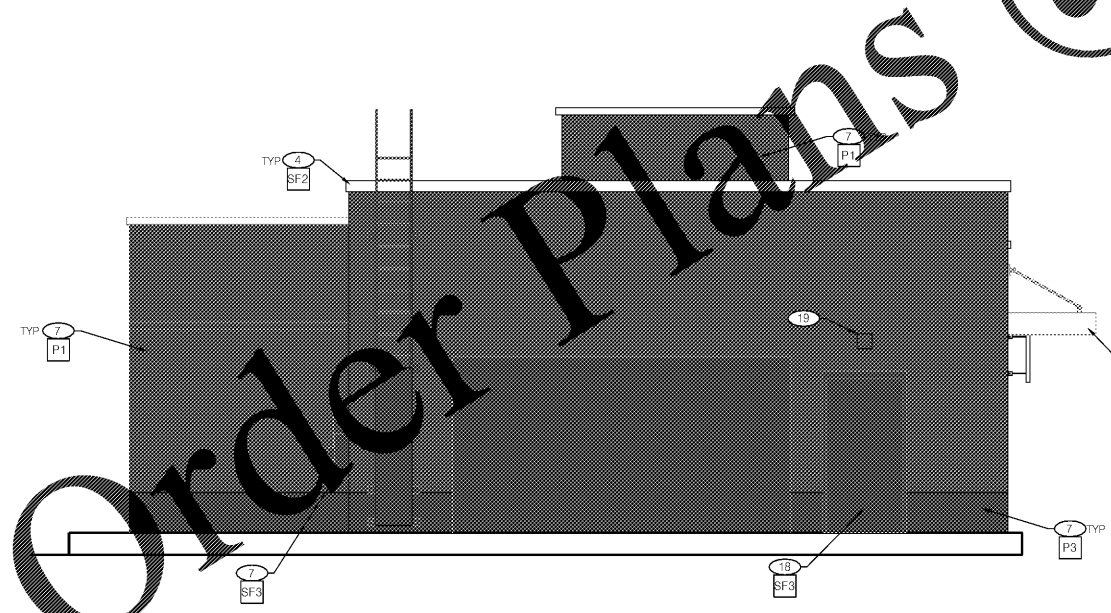
G.C. TO PROVIDE VERIFICATION OF EXISTING STRUCTURAL ATTACHMENTS FOR NEW BUILDING ELEMENTS. IF REQUIRED PROVIDE ADDITIONAL BLOCKING PER VENDOR'S RECOMMENDATION. KFC SIGNAGE/STENCIL BY OTHERS - UNDER SEPARATE PERMIT.



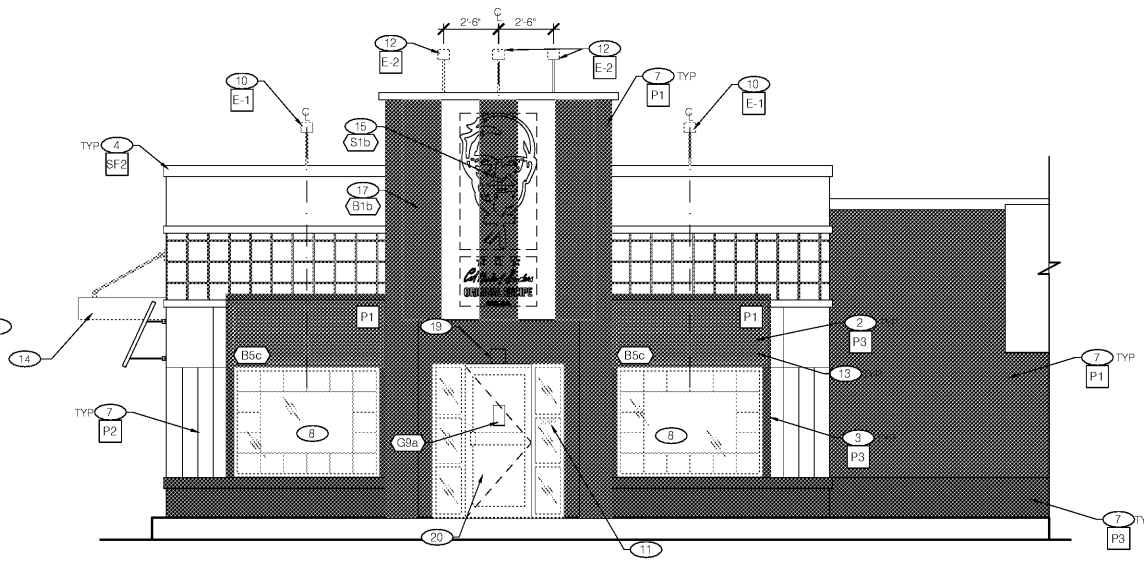
4 - DRIVE-THRU ELEVATION
Scale: 1/4" = 1'-0"



3 - SIDE ELEVATION
Scale: 1/4" = 1'-0"



2 - REAR ELEVATION
Scale: 1/4" = 1'-0"



1 - FRONT ELEVATION
Scale: 1/4" = 1'-0"

PAINT SCHEDULE
SHERWIN WILLIAMS PAINT NEEDS TO BE COLOR MATCHED AND PROVIDED AS BENJAMIN MOORE

MARK	LOCATION	MFG / CONTACT	MODEL #/COLOR	REMARKS
P1	EXTERIOR PAINT	KURT MCCLELLAND P (800)555-5147 C (502)640-1908	AURA EXTERIOR PAINT EXOTIC RED 2085-10 LOW LUSTER (504)	MASONRY SUBSTRATE PRIMER NO.96 GLAZED TILE, ACRYLIC, FIBERGLASS SUBSTRATE PRIMER NSLX 574, 554A, 110
P2	EXTERIOR PAINT	KURT MCCLELLAND P (800)555-5147 C (502)640-1908	REGAL SELECT EXTERIOR PAINT WEDDING VEL 2125-70 LOW LUSTER (N601)	MASONRY SUBSTRATE PRIMER NO.96 GLAZED TILE, ACRYLIC, FIBERGLASS SUBSTRATE PRIMER NSLX 574, 554A, 110
P3	EXTERIOR PAINT	KURT MCCLELLAND P (800)555-5147 C (502)640-1908	AURA EXTERIOR PAINT BLACK HORIZON 2122-30 LOW LUSTER (504)	MASONRY SUBSTRATE PRIMER NO.96 GLAZED TILE, ACRYLIC, FIBERGLASS SUBSTRATE PRIMER NSLX 574, 554A, 110
P4	INTERIOR PAINT	KURT MCCLELLAND P (800)555-5147 C (502)640-1908	REGAL SELECT EXTERIOR PAINT WEDDING VEL 2125-70 LOW LUSTER (N601)	PRIME ALL NEW SUBSTRATES WITH BENJAMIN MOORE FRESH START PRIMER #3200
P5	INTERIOR PAINT	KURT MCCLELLAND P (800)555-5147 C (502)640-1908	AURA EXTERIOR PAINT BLACK HORIZON 2122-30 LOW LUSTER (504)	SELF-PRIMING
P6	INTERIOR PAINT	KURT MCCLELLAND P (800)555-5147 C (502)640-1908	REGAL SELECT EXTERIOR PAINT WEDDING VEL 2125-70 LOW LUSTER (N601)	PRIME ALL NEW SUBSTRATES WITH BENJAMIN MOORE FRESH START PRIMER #3200
P7	EXTERIOR METAL	KURT MCCLELLAND P (800)555-5147 C (502)640-1908	COROTECH POLYESTER URETHANE 2122-30 BLACK HORIZON (N601)	COROTECH PRIMER (V152)
P8	EXTERIOR METAL	KURT MCCLELLAND P (800)555-5147 C (502)640-1908	COROTECH POLYESTER URETHANE 2122-30 BLACK HORIZON (N601)	COROTECH PRIMER (V152)
P9	EXTERIOR METAL	KURT MCCLELLAND P (800)555-5147 C (502)640-1908	COROTECH POLYESTER URETHANE 2122-30 BLACK HORIZON (N601)	COROTECH PRIMER (V152)
P10	EXTERIOR METAL	KURT MCCLELLAND P (800)555-5147 C (502)640-1908	COROTECH POLYESTER URETHANE 2122-30 BLACK HORIZON (N601)	COROTECH PRIMER (V152)

- FINISH NOTES**
- NEW METAL EXTERIOR LIGHT FIXTURES INSTALLED ABOVE EXISTING - REFER TO LIGHT FIXTURE SCHEDULE
 - PAINT WALL SURFACE BEHIND NEW AWNINGS
 - PAINT 4" WIDE BORDER WINDOW SURROUND AS INDICATED
 - EXISTING PARAPET COPING TO BE REPAIRED, SEALED AND PAINTED
 - EXISTING RAILING TO BE PAINTED OF 3
 - STENCIL PAINTED GRAPHIC ELEMENT
 - NEW EXTERIOR PAINT TREATMENT
 - EXISTING WINDOWS
 - EXISTING BOLLARD
 - NEW EXTERIOR LIGHT FIXTURE CENTERED ON WINDOW AND/OR GRAPHIC, OTHERWISE AS INDICATED IN ELEVATION. PATCH AND REPAIR ROOF MEMBRANE AT FIXTURE ATTACHMENT POINT
 - REINSTALL ADDRESS NUMBERS AFTER PAINTING
 - NEW SIGNAGE ACCENT LIGHT FIXTURE, REFER TO LIGHT FIXTURE SCHEDULE
 - NEW PRE-FINISHED METAL LOUVERED AWNINGS (AWNINGS ABOVE DOORS TO HAVE RAIN DIVERTERS)
 - NEW DRIVE-THRU CANOPY
 - NEW STAND-OFF METAL PANEL SYSTEM W/ VINYL GRAPHICS
 - NEW KFC INDIVIDUAL LETTER FACES AND CABINET CANS
 - NEW METAL PANEL SYSTEM ATTACHED TO AND HELD OFF EXISTING TOWER. TOP OF PANELING TO ALIGN WITH BOTTOM OF EXISTING TOWER COPING.
 - PAINT EXISTING EXTERIOR DOOR AND FRAME
 - NEW EXTERIOR WALL LIGHT, M-3
 - EXISTING STOREFRONT
 - NO WORK IN THIS AREA

IMAGE COMPONENT SCHEDULE

TAG	QTY	ITEM DESCRIPTION	
GRAPHICS			
S1b	1	VINYL LOGO/GRAPHICS FOR TOWER PANEL - HALF HEIGHT	
S3a	1	KFC CHANNEL LETTERS - 30" RED	
S4b	1	"REAL MEALS TO GO" VINYL LETTERS FOR 8' DT CANOPY	
S8a	1	"HARD WAY" PAINT TEMPLATE - 57" ROUND	
BUILDING EXTERIOR ELEMENTS			
B1b	1	TOWER PANEL WITH LOGO AND GRAPHICS - HALF HEIGHT	
B3b	1	DT WINDOW CANOPY - 8' WIDE	
AWNINGS			
TAG	QTY	ITEM DESCRIPTION	COLOR
B5c	2	SHUTTERED AWNINGS - 7'-0"	P1
B5c3	1	SHUTTERED AWNINGS - 7'-0" WIDE (3'-0" HIGH)	P1

LIGHTING SCHEDULE

TAG	QTY	ITEM DESCRIPTION
E-1	5	SINGLE ARRAY LED FLOOD LIGHT 3000K BLACK FINISH WITH CUSTOM 36" ARM BRACKET BLACK FINISH
E-2	3	SINGLE ARRAY LED FLOOD LIGHT 3000K BLACK FINISH WITH CUSTOM 48" ARM BRACKET BLACK FINISH HORIZONTAL WIDE SPOT BEAM
M-3	2	EXTERIOR RATED LED WALL PACK 3000K BRONZE FINISH



INTERPLAN
ARCHITECTURE
ENGINEERING
INTERIOR DESIGN
PROJECT MANAGEMENT

604 COURTLAND STREET
SUITE 100
ORLANDO, FLORIDA 32804
PH 407.645.5008
FX 407.629.9124

SEAL
THIS DOCUMENT IS NOT FOR CONSTRUCTION
UNLESS THE ARCHITECT OR ENGINEER'S
SIGNATURE AND SEAL APPEAR BELOW.

CORPORATE SEAL

IP PROJECT NO # 2017 6443

DRAWING SUBMITTALS

DESIGN DEVELOPMENT REVIEW SET	PERMIT SET SUBMITTAL
DATE: _____ BY: _____	DATE: _____ BY: _____
DATE: _____ BY: _____	DATE: _____ BY: _____

REVISION:

Mark	Date	By

PROJECT TITLE
"K30 S6000 SERIES
TO AMERICAN SHOWMAN"
TEMPLATE VERSION
RELEASE 2.0 JAN. 2016

5987 W. JIM BILTON BLVD.,
SAINT GEORGE, SC 29477
COMMISSION NO: H343003
ISSUE DATE: 06/13/17

SHEET TITLE
EXTERIOR
ELEVATIONS

SHEET NO.
A-2.0

THIS DOCUMENT IS THE PROPERTY OF LDILLING.COM. NEITHER THE DOCUMENT NOR THE INFORMATION CONTAINED HEREIN IS TO BE REPRODUCED, COPIED, OR USED FOR ANY OTHER PROJECT WITHOUT THE WRITTEN CONSENT OF LDILLING.COM. PLOTTED FILE: Jan 10, 2017 11:45:33 AM

COPYRIGHT © 2017 INTERPLAN LICENSES COPYRIGHT & OTHER RIGHTS RESTRICTING THESE DOCUMENTS TO THE ORIGINAL SITE OR PURPOSE FOR WHICH THEY WERE PREPARED, REPRODUCTIONS, CHANGES OR ASSIGNMENTS ARE PROHIBITED.