

**KEYNOTES**

- 16.801 SEAL-OFF ALL CONDUITS THAT ENTER OR PASS THROUGH OR UNDER A CLASSIFIED AREA. REF 2-FSE3.
- 16.811 1 - 1" CONDUIT WITH SEAL-OFF INSIDE COLUMN BY CANOPY MANUFACTURER. REF TO CANOPY MANUFACTURER'S DRAWINGS FOR EXACT LOCATION OF COLUMN. SEAL AFTER CIRCUITS HAVE BEEN PULLED, TESTED AND ARE FUNCTIONING PROPERLY.
- 16.840 PROVIDE 1" GRC FROM SECURITY CAMERA AT COLUMN TO DATA CONDUIT WALL CABINET, WITH SEAL-OFFS AT EACH END. CONTRACTOR MAKE CONNECTION AT EACH COLUMN BASE. SECURITY CAMERA CABLING SUPPLIED AND INSTALLED BY OWNER. REF 1-FSE1 FOR EXACT CANOPY COLUMN LOCATIONS.
- INSTALL SITE SECURITY PANEL FURNISHED BY OWNER. DIRECT CONNECT. PROVIDE ISOLATED GROUND IN ADDITION TO EQUIPMENT GROUNDING CONDUCTOR PER MANUFACTURER'S RECOMMENDATION. TERMINATIONS SHOULD BE INSTALLED PER RECOMMENDATION OF MANUFACTURER, REF 1-FSE8.

**HFA**  
ARCHITECTS  
ENGINEERS  
INTERIORS

**HARRISON FRENCH**  
AND ASSOCIATES, PLLC

705 S. Wall Street, Suite 3  
Fayetteville, Arkansas 72712  
Phone: 479.778.7780  
Fax: 479.520.9685  
www.hfa-ae.com

STIPULATION FOR REUSE  
THIS DRAWING WAS PREPARED FOR USE ON A SPECIFIC SITE AT WYNANTON, ARKANSAS. IT IS NOT TO BE REUSED ON ANY OTHER PROJECT WITHOUT THE WRITTEN CONSENT OF THE ARCHITECT AND ENGINEER. THE ARCHITECT AND ENGINEER SHALL BE RESPONSIBLE FOR THE PROTECTION AND REUSE OF THIS DRAWING. UNAUTHORIZED REUSE OR MODIFICATION OF THIS DRAWING IS PROHIBITED AND MAY BE CAUSE FOR LEGAL ACTION.

**SAM'S MART**  
4965 UNIVERSITY PARKWAY  
WINSTON-SALEM, NC 27106

JOB NUMBER: 07-17-80003

ISSUE BLOCK

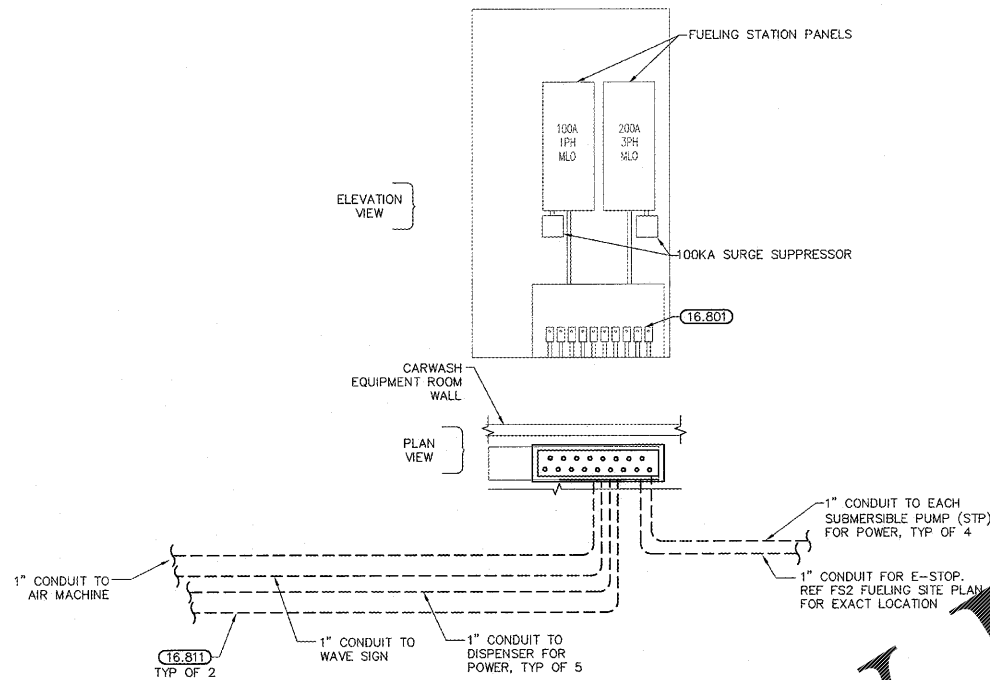

STORE NO.:  
DOCUMENT DATE: 06-08-17  
CHECKED BY: JAC  
DRAWN BY: KRS  
PROTO CYCLE MAY-2017

Professional Engineer Seal  
HARRISON FRENCH AND ASSOCIATES, PLLC  
P-0402  
6-6-17

**SITE CONDUIT DETAILS**

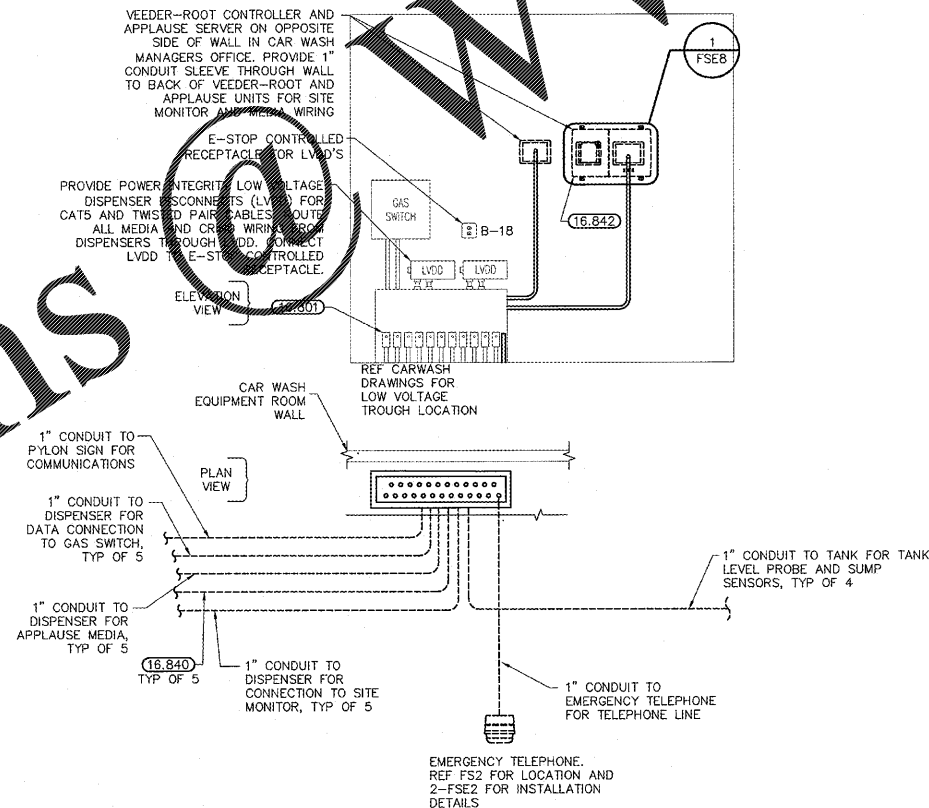
SHEET: **FSE4**

CARWASH EQUIPMENT ROOM WALL INTERIOR ELEVATION



**2 POWER ONE-LINE DIAGRAM**  
NTS

CAR WASH EQUIPMENT ROOM WALL INTERIOR ELEVATION



**1 DATA/SITE MONITORING ONE-LINE DIAGRAM**  
NTS

ONE-LINE DIAGRAM SHOWN FOR REPRESENTATIVE PURPOSE ONLY. FUELING CONTRACTOR SHALL COORDINATE ALL CONDUITS AND CONDUCTORS

Order Plans

WWW.LDILine.com