

KEYNOTES

16.826 ELECTRICAL SEAL-OFFS NOT SHOWN. PROVIDE SEAL-OFFS FOR ALL CONDUITS. ALL SEAL-OFFS AND JUNCTION BOXES TO BE 1" MINIMUM ABOVE PENETRATIONS. ELECTRICAL CONDUITS SHALL NOT BE ROUTED OVER THE MANWAY COVER. FLEXIBLE CONNECTORS FOR THE ELECTRICAL CONNECTIONS FROM EXPLOSION PROOF JUNCTION BOX TO THE SUBMERGED PUMP WILL NOT BE ACCEPTED. ALL CONNECTIONS MUST BE MADE IN RIGID CONDUIT.

16.844 1" GRC TO SITE MONITORING WIRING CABINET IN THE WASH MANAGER'S OFFICE.

HFA
ARCHITECTS
ENGINEERS
INTERIORS

HARRISON FRENCH & ASSOCIATES, PLLC
705 S. Wall Blvd., Suite 3
Fayetteville, Arkansas 72712
937.37780
937.5209685
www.hfa-se.com

STIPULATION FOR REUSE
THIS DRAWING WAS PREPARED FOR USE ON A SPECIFIC SITE AT A PARTICULAR DATE AND QUANTITY, AND IS NOT VALID FOR ANY OTHER SITE OR DATE OR QUANTITY. ANY REUSE OF THIS DRAWING FOR ANY OTHER PROJECT WITHOUT THE WRITTEN PERMISSION OF HARRISON FRENCH & ASSOCIATES, PLLC IS PROHIBITED AND MAY BE CONSIDERED AS A VIOLATION OF THE PROFESSIONAL ENGINEERING AND ARCHITECTURE ACTS.

SAM'S MART
4865 UNIVERSITY PARKWAY
WINSTON-SALEM, NC 27106

JOB NUMBER: 07-17-80003

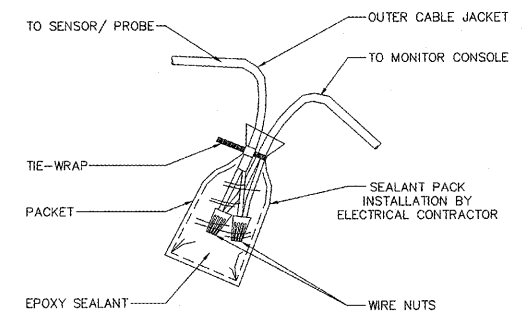
ISSUE BLOCK

STORE NO.:
DOCUMENT DATE: 06-08-17
CHECKED BY: JAC
DRAWN BY: KRS
PROTO CYCLE MAY-2017

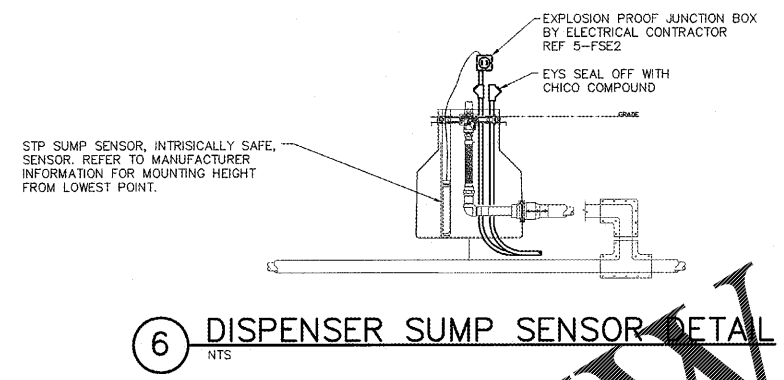
SEAL 037563
HARRISON FRENCH AND ASSOCIATES, PLLC
P-0402
6-6-17

TANK ELECTRICAL PLANS AND ELECTRICAL DETAILS

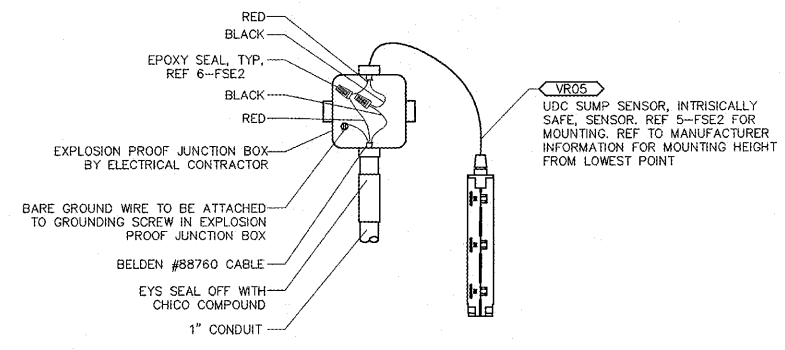
SHEET: **FSE2**



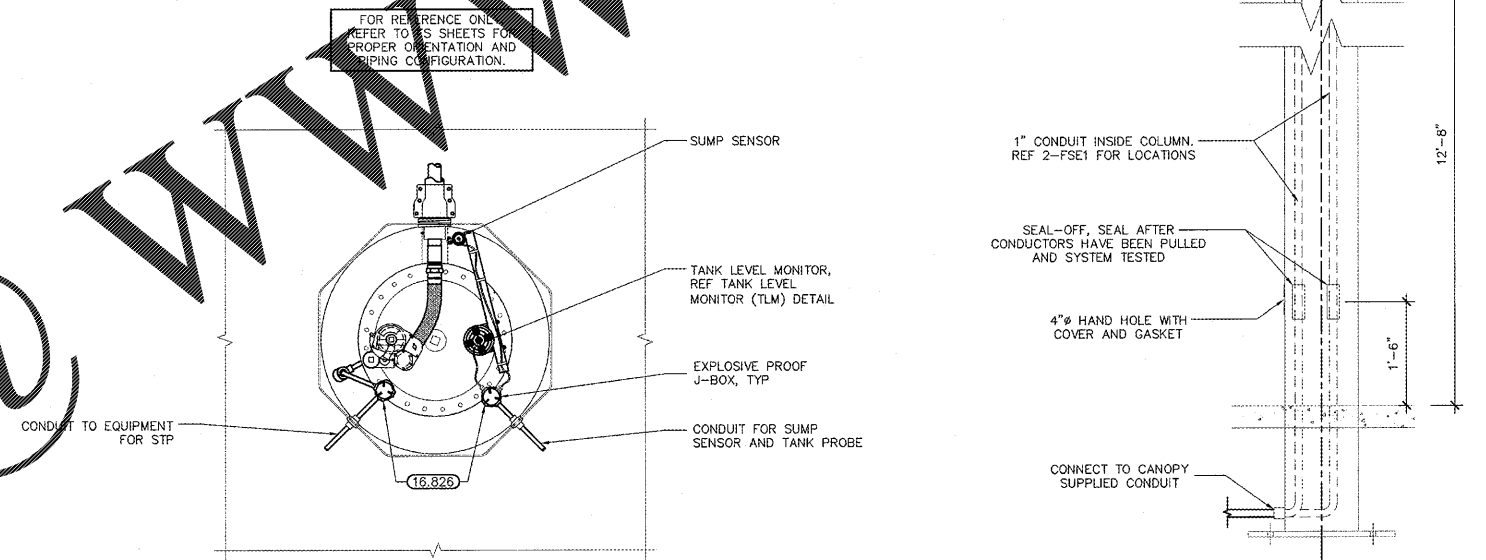
7 WIRE CONNECTION EPOXY SEAL DETAIL
NTS



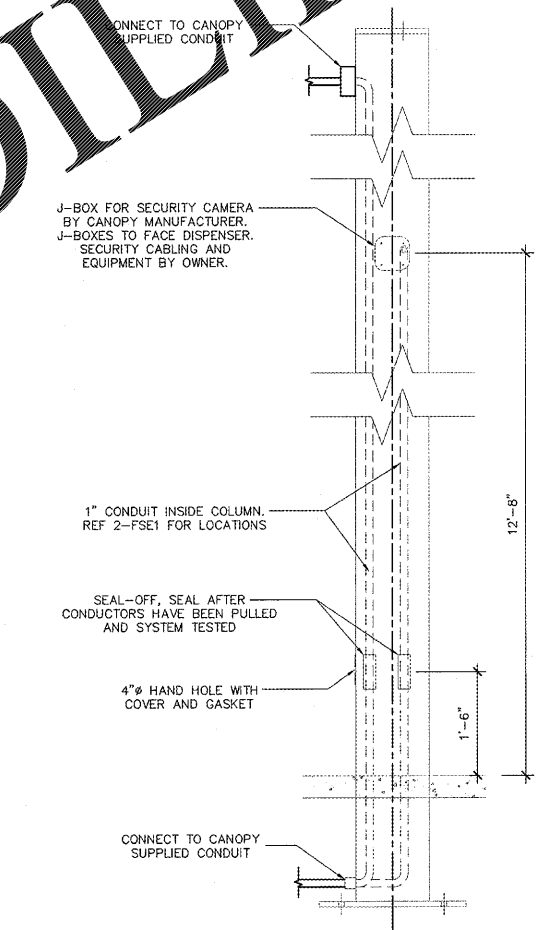
6 DISPENSER SUMP SENSOR DETAIL
NTS



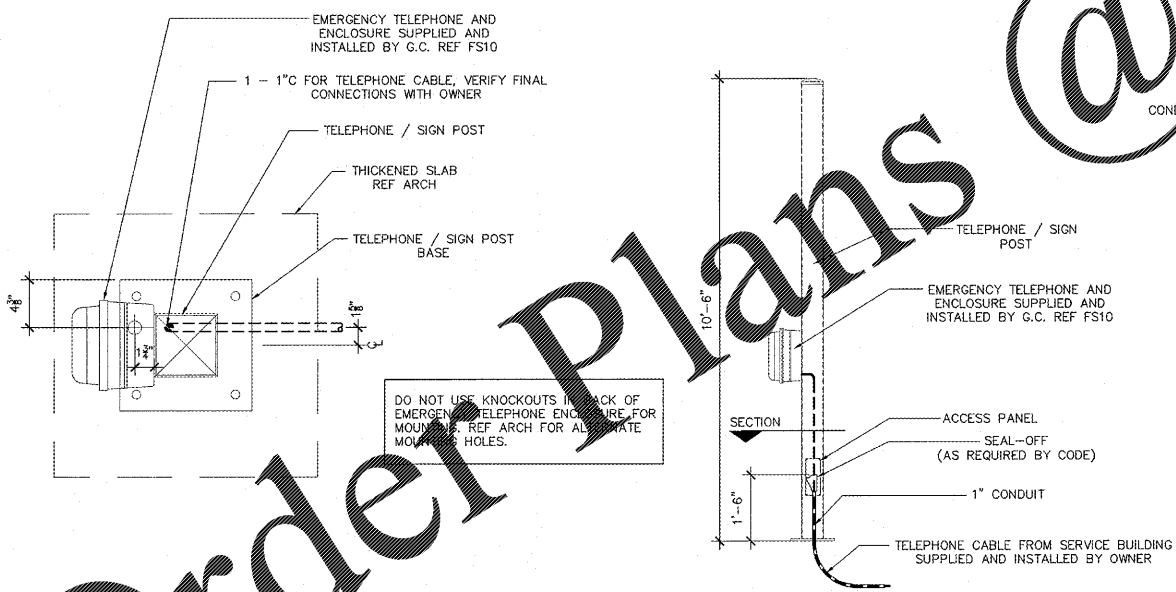
5 UDC SUMP SENSOR MOUNTING DETAIL
NTS



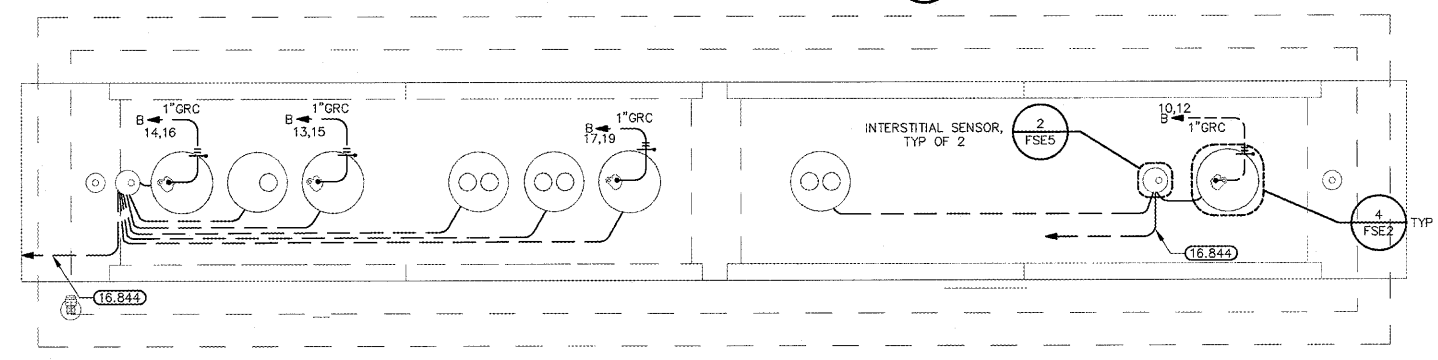
4 STP SUMP SECTION (TYPICAL)
3/4" = 1'-0"



3 CANOPY COLUMN DETAIL (TYPICAL)
NTS



2 TELEPHONE AND SIGN POST PLAN
NTS



1 TANK FIELD ELECTRICAL PLAN
3/16" = 1'-0"

TANK FIELD PLAN SHOWN FOR REPRESENTATIVE PURPOSE ONLY. FUELING CONTRACTOR SHALL COORDINATE ALL CONDUITS AND CONDUCTORS. REFER TO FST SHEETS

Order Plans

@

WWW.LDILine.com