

FUEL STATION GENERAL NOTES

1. PROVIDE ALL MATERIALS FOR A COMPLETE INSTALLATION IN ALL ASPECTS READY FOR INTENDED USE AND IN STRICT ACCORDANCE WITH STATE AND LOCAL CODES AND MANUFACTURER'S RECOMMENDATIONS.
2. EACH CONTRACTOR IS RESPONSIBLE FOR HAVING THOROUGH KNOWLEDGE OF ALL DRAWINGS AND SPECIFICATIONS AS THEY RELATE TO THIS WORK. NO ADDITIONAL COMPENSATION SHALL BE ALLOWED DUE TO LACK OF THIS KNOWLEDGE.
3. COORDINATE THE ROUTING OF ALL CONDUITS TO THE ELECTRICAL ENCLOSURE WITH BOLLARD LOCATIONS AND CIVIL PLANS.
4. REF FSE4 FOR CONDUIT LOCATIONS AT CAR WASH BUILDING.
5. MINIMUM ALLOWED CONDUCTOR SIZE SHALL BE #12 AWG THHN UNLESS NOTED OTHERWISE ON THE DRAWINGS.
6. INSTALL A PULL WIRE IN EACH EMPTY RACEWAY THAT IS LEFT FOR INSTALLATION OF CONDUCTORS OR CABLES UNDER OTHER DIVISIONS OR CONTRACTS. USE POLYPROPYLENE OR MONOFILAMENT PLASTIC LINE WITH NOT LESS THAN 200-LB TENSILE STRENGTH. LEAVE AT LEAST 24 INCHES OF SLACK AT EACH END OF PULL WIRE.
7. RIGID NONMETALLIC CONDUIT (RNC) IS ALLOWED FOR UNDERGROUND RUNS IF CONDUIT IS BURIED AT A MINIMUM OF 2' WITH THE EXCEPTION OF THE FIRST AND LAST 10' OF THE UNDERGROUND RUN WHERE AHJ ALLOWS.
8. WHERE A CONDUIT ENTERS A BOX, FITTING OR OTHER ENCLOSURE PROVIDE A BUSHING TO PROTECT THE WIRE FROM ABRASION UNLESS THE DESIGN OF THE BOX, FITTING OR ENCLOSURE IS SUCH AS TO AFFORD EQUIVALENT PROTECTION.
9. CONDUIT SHALL BE "ROBROY" PVC COATED RIGID CONDUIT THE FIRST AND LAST 10' AND PVC IN-BETWEEN.
10. CONTRACTOR IS RESPONSIBLE FOR ALL CABLING INSTALLATION AS REQUIRED FOR A COMPLETE AND OPERABLE FUEL STATION, UNLESS NOTED OTHERWISE ON THE PLANS.
11. CLEARLY LABEL AND IDENTIFY ALL CONDUITS AND WIRING FOR INTRINSICALLY SAFE EQUIPMENT PER NEC 504.80.

KEYNOTES

- 16.800 CLASSIFIED AREA AS DEFINED BY NEC ARTICLE 514.
- CLASSIFIED AREA 1, DIVISION 2: WITHIN 18" HORIZONTALLY IN ALL DIRECTIONS EXTENDING TO GRADE FROM THE DISPENSER ENCLOSURE OR THAT PORTION OF THE DISPENSER ENCLOSURE CONTAINING LIQUID-HANDLING COMPONENTS, ALSO UP TO 18" ABOVE GRADE LEVEL WITHIN 20 FT HORIZONTALLY OF ANY EDGE OF ENCLOSURE.
- CLASSIFIED AREA 1, DIVISION 1: ANY PIT OR BOX BELOW GRADE LEVEL. REF 4-FSE1.
- 16.810 PROVIDE 1" GRC TO POWER CONDUIT WIRING CABINET IN EQUIPMENT ROOM, PROVIDE SEAL-OFF AT POWER CONDUIT WIRING CABINET AND TERMINATE CONDUCTORS AT LIGHTING CONTACTORS. REF 1-FSE3 FOR CONTACTOR SCHEMATIC. SEAL AFTER CIRCUIT HAS BEEN PULLED, TESTED AND IS FUNCTIONING PROPERLY.
- 16.811 1 - 1" CONDUIT WITH SEAL-OFF INSIDE COLUMN BY CANOPY MANUFACTURER. REF TO CANOPY MANUFACTURER'S DRAWINGS FOR EXACT LOCATION OF CONDUIT SEAL AFTER CIRCUITS HAVE BEEN PULLED, TESTED AND ARE FUNCTIONING PROPERLY.
- 16.813 RIGID CANOPY LIGHT AND WIRING CARRY THRU CONDUITS AT COLUMNS.
- 16.825 THREE (3) ONE PRODUCT DISPENSER: PULL (1) HOT CONDUCTOR, (1) NEUTRAL AND (1) EQUIPMENT GROUND, (3) PRODUCT SELECT WIRES, AND (2) GASES, ALL #12 AWG THHN/THWN GAS AND OIL RESISTANT IN A 1" GRC FROM ELECTRICAL PANEL WITH SEAL-OFFS AT POINT OF EMERGENCE FROM DISPENSER SUMP AND AT POWER CONDUIT WIRING CABINET LOCATED IN CAR WASH EQUIPMENT ROOM.
- 16.840 PROVIDE 1" GRC FROM SECURITY CAMERA AT COLUMN TO MANAGERS OFFICE IN CAR WASH, WITH SEAL-OFFS AT EACH END. CONTRACTOR TO MAKE CONNECTION AT EACH COLUMN BASE. SECURITY CAMERA CABLING SUPPLIED AND INSTALLED BY OWNER. REF 1-FSE1 FOR EXACT CANOPY COLUMN LOCATIONS.
- 16.845 INSTALL (2) PAIRS OF 2-WIRE TWISTED PAIR CABLE IN 1" GRC FROM SWITCH TO EACH DISPENSER. AT EACH DISPENSER, ROUTE THE CABLES TO THE HEAD OF THE DISPENSER AND CONNECT PER MANUFACTURER'S INSTALLATION INSTRUCTIONS. INSTALL AND CONNECT TWO GAS CABLES FROM EACH GAS SWITCH TO THE SITE MONITORING SYSTEM PER THE MANUFACTURER'S INSTALLATION INSTRUCTIONS. MAKE CONNECTIONS AT THE GAS SWITCH FOR EACH CABLE FROM DISPENSERS AND SITE MONITORING SYSTEM.
- 16.846 PROVIDE 1" GRC TO DISPENSER HEAD FROM LOW VOLTAGE DISCONNECT IN ELECTRICAL ENCLOSURE. PROVIDE SEAL-OFFS AT EACH END.
- 16.847 PROVIDE 1" GRC TO SUMP FOR SUMP SENSOR FROM SITE MONITOR PANEL. PROVIDE SEAL-OFFS AT EACH END. ROUTE (1) BELDEN #88760 CABLE. REF 6-FSE2.

HFA
ARCHITECTS
ENGINEERS
INTERIORS

HARRISON FRENCH
AND ASSOCIATES, PLLC

705 S. Walnut Street, Suite 3
Fayetteville, Arkansas 72712
Phone: 479-7780
Fax: 479-520-9685
www.hfa-ae.com

STIPULATION FOR REUSE
THIS DRAWING WAS PREPARED FOR USE ON A SPECIFIC SITE AT WINSTON-SALEM, NC. IT IS NOT TO BE REUSED OR REPRODUCED IN ANY MANNER WITHOUT THE WRITTEN PERMISSION OF THE ARCHITECTS AND ENGINEERS. ANY REUSE OF THIS DRAWING FOR ANY OTHER PROJECT WITHOUT THE WRITTEN PERMISSION OF THE ARCHITECTS AND ENGINEERS IS PROHIBITED. THE ARCHITECTS AND ENGINEERS ACCEPT NO LIABILITY FOR ANY DAMAGE OR INJURY TO PERSONS OR PROPERTY ARISING FROM THE USE OF THIS DRAWING. THE ARCHITECTS AND ENGINEERS ARE NOT TO BE HELD RESPONSIBLE FOR ANY DAMAGE OR INJURY TO PERSONS OR PROPERTY ARISING FROM THE USE OF THIS DRAWING.

SAM'S MART
4965 UNIVERSITY PARKWAY
WINSTON-SALEM, NC 27106

JOB NUMBER: 07-17-80003

ISSUE BLOCK

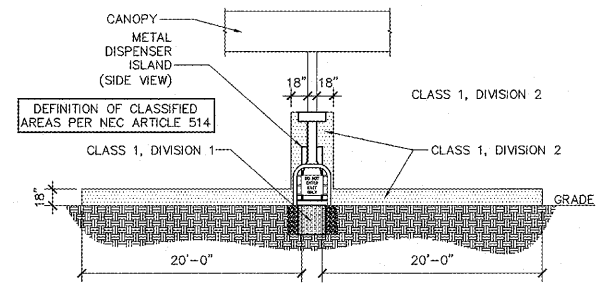
STORE NO.:
DOCUMENT DATE: 06-08-17
CHECKED BY: JAC
DRAWN BY: KRS
PROTO CYCLE MAY-2017

SEAL
037563
REGISTERED PROFESSIONAL ENGINEER
J. J. CASTAÑEDA

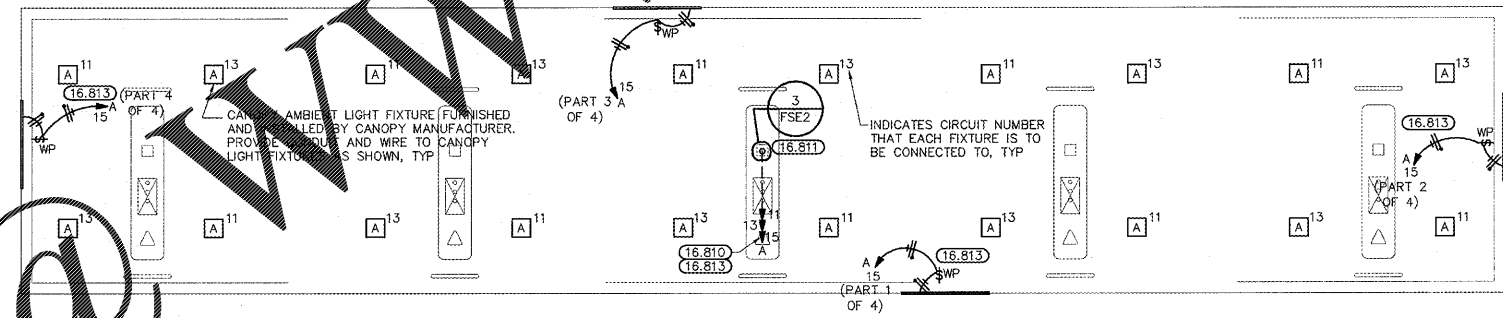
HARRISON FRENCH AND ASSOCIATES, PLLC
P-0402
6-6-17

CANOPY ELECTRICAL PLANS AND DETAILS

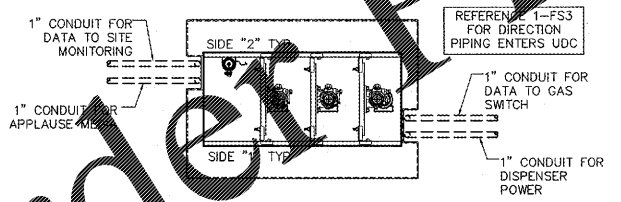
SHEET: **FSE1**



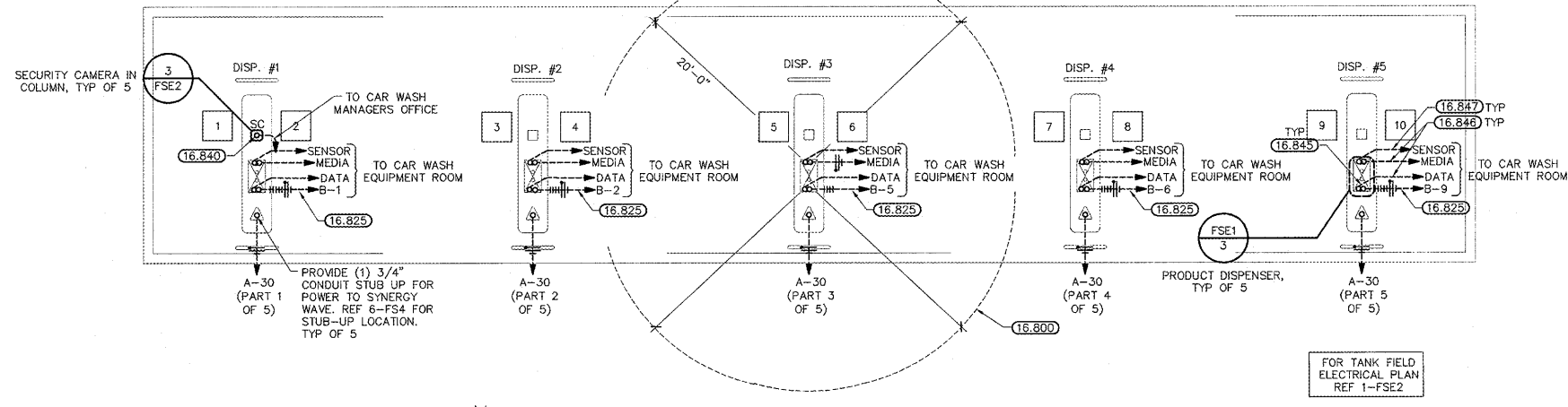
④ AREA CLASSIFICATION BOUNDRY
1/8" = 1'-0"



② CANOPY LIGHTING PLAN
1/8" = 1'-0"



③ PRODUCT DISPENSER PLAN
3/4" = 1'-0"



① DISPENSER POWER PLAN
1/8" = 1'-0"

Order Plans

@

www.LDInme.com