

STIPULATION FOR REUSE

THIS DRAWING AND ANY INFORMATION CONTAINED HEREIN IS THE PROPERTY OF HARRISON FRENCH ARCHITECTS ENGINEERS INTERIORS. IT IS TO BE USED ONLY FOR THE PROJECT AND SITE SPECIFICALLY IDENTIFIED HEREIN. IT IS NOT TO BE REPRODUCED, COPIED, REPRINTED, OR TRANSMITTED IN ANY FORM OR BY ANY MEANS, ELECTRONIC OR MECHANICAL, INCLUDING PHOTOCOPYING, RECORDING, OR BY ANY INFORMATION STORAGE AND RETRIEVAL SYSTEM, WITHOUT THE WRITTEN PERMISSION OF HARRISON FRENCH ARCHITECTS ENGINEERS INTERIORS.

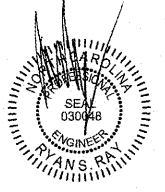
SAM'S MART
4965 UNIVERSITY PARKWAY
WINSTON-SALEM, NC 27106

JOB NUMBER: 07-17-80003

ISSUE BLOCK

NO.	DATE	DESCRIPTION

STORE NO: _____
DOCUMENT DATE: 06-08-17
CHECKED BY: BKH
DRAWN BY: JMA
PROTO CYCLE MAY-2017

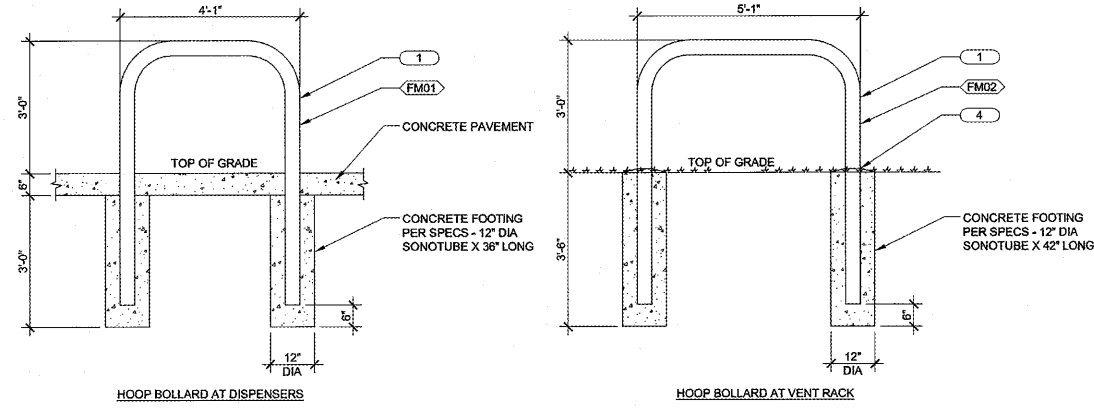


HARRISON FRENCH AND ASSOCIATES, PLLC
P-0402

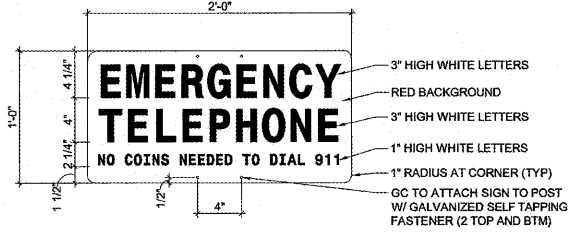
JUN 07 2017

REMOTE VENT, E-STOP AND 911 PHONE

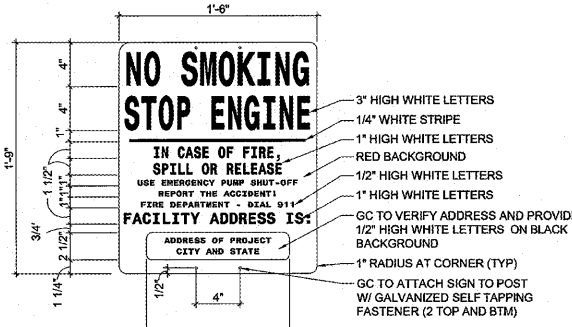
SHEET: **FS10**



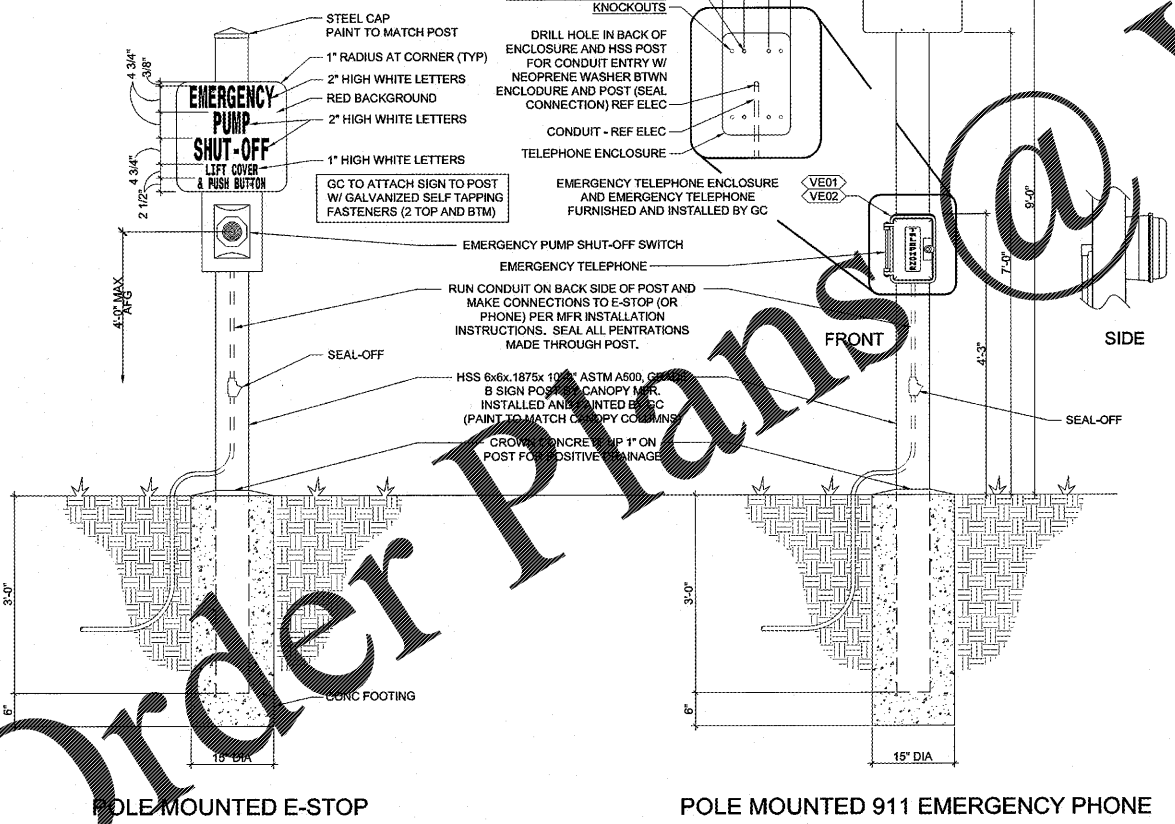
2 HOOP BOLLARD DETAILS
1/2"=1'-0"



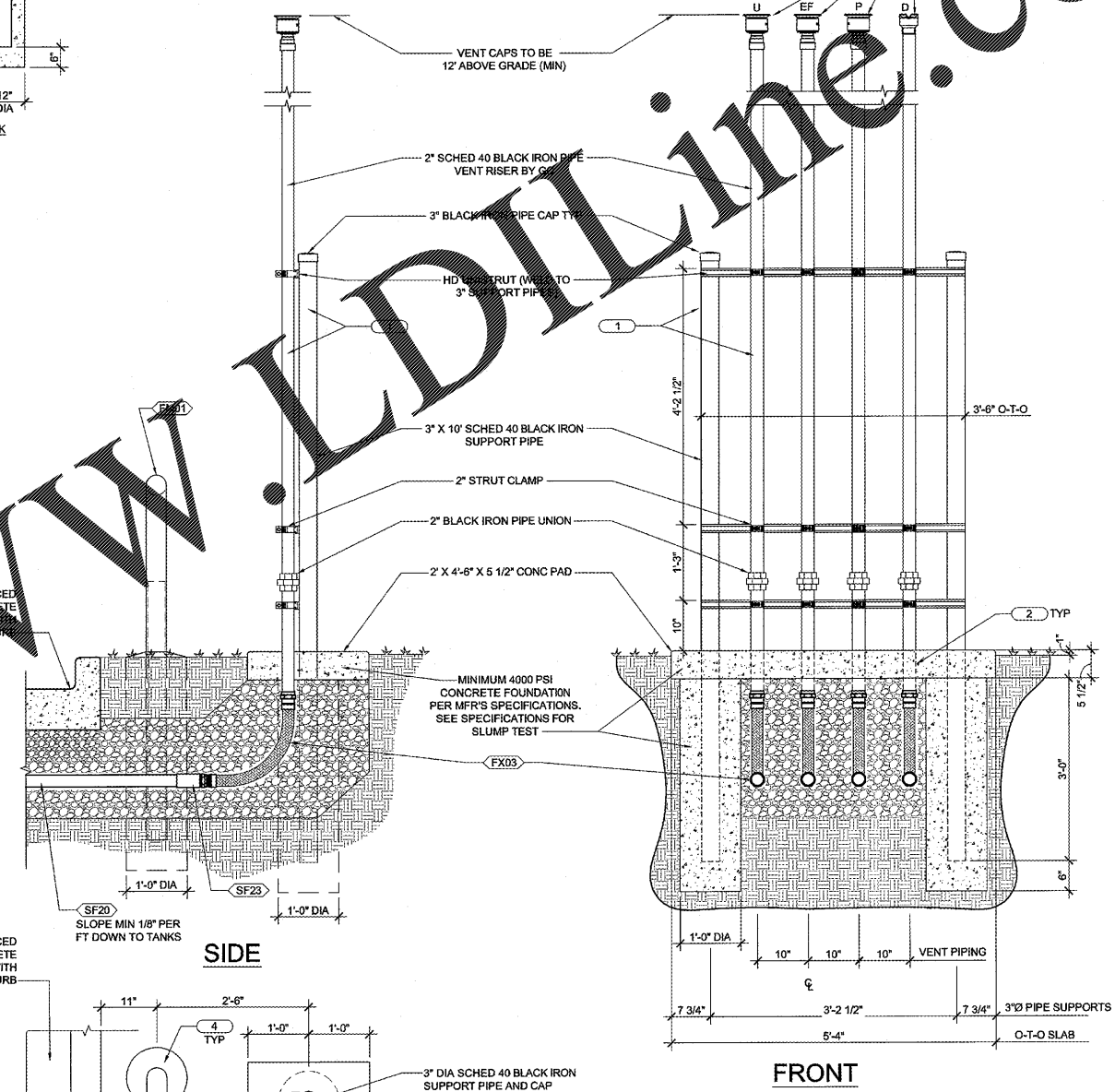
"EMERGENCY TELEPHONE" SIGN



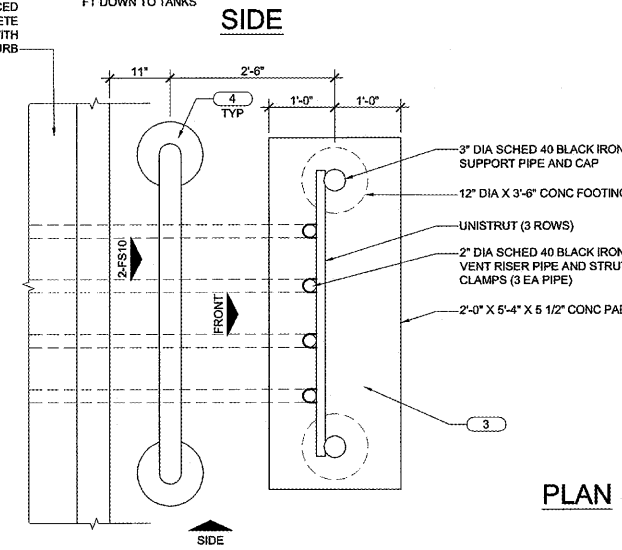
"NO SMOKING" SIGN



3 E-STOP AND 911 PHONE AND POST DETAILS
NO SCALE



1 TANK VENT RISER DETAILS
3/4"=1'-0"



PLAN

FS10 KEYNOTES

- PAINT ALL EXPOSED METAL AT VENT RISERS AND SUPPORTS TO MATCH CANOPY COLUMNS.
- ALL UNDERGROUND STEEL VENT PIPE AND FITTINGS EXPOSED TO EARTH, BACKFILL OR CONCRETE SHALL BE WRAPPED IN THE FOLLOWING MANNER:
APPLY SCOTCHWRAP PIPE INSULATION PUTTY AT ALL IRREGULAR SURFACES SUCH AS FITTINGS SO AS TO PROVIDE A UNIFORM SURFACE FOR THE PRIME COAT TAPE WRAP. APPLY SCOTCHWRAP PIPE PRIMER AT AN AVERAGE RATE OF 350 SQ FT PER GALLON. APPLY SCOTCHWRAP #51 TAPE (20 MIL) WITH WIDTH AND OVERLAP AS SHOWN BELOW:

PIPE DIA	TAPE WIDTH	OVERLAP
1 1/2"	2"	3/8"
2"	2"	3/8"
3"	3"	1/2"
- POUR 5 1/2" THICK CONCRETE SLAB AT VENT RACK "AFTER" PLACING ALL VENT PIPING, 3" SUPPORT PIPES AND PEA GRAVEL BACKFILL IS IN PLACE.
- CROWN CONCRETE AROUND HOOP BOLLARD AT GRADE FOR POSITIVE DRAINAGE AWAY FROM POST.

Order Plans
 Jun08:2017 4:56pm - User: jpm
 P:\2017-17-80003\Sams_Mart - Wilson-Scham, NCF\AutoCAD\Drawings\FS10 REMOTE VENT, E-STOP AND 911 PHONE.dwg