

STIPULATION FOR REUSE
THIS DRAWING IS THE PROPERTY OF HFA ARCHITECTS ENGINEERS INTERIORS. IT IS TO BE USED ONLY FOR THE PROJECT AND SITE SPECIFIC TO WHICH IT WAS PREPARED. IT IS NOT TO BE REPRODUCED, COPIED, REPRODUCED, OR TRANSMITTED IN ANY FORM OR BY ANY MEANS, ELECTRONIC OR MECHANICAL, INCLUDING PHOTOCOPYING, RECORDING, OR BY ANY INFORMATION STORAGE AND RETRIEVAL SYSTEM. WITHOUT THE WRITTEN PERMISSION OF HFA ARCHITECTS ENGINEERS INTERIORS, ANY REPRODUCTION OR TRANSMISSION OF THIS DRAWING FOR ANY OTHER PROJECT IS STRICTLY PROHIBITED AND WILL BE CONSIDERED A VIOLATION OF THE PROFESSIONAL ENGINEERING AND ARCHITECTURAL ETHICS. HFA ARCHITECTS ENGINEERS INTERIORS AND ITS CONSULTANTS SHALL BE RESPONSIBLE FOR THE DESIGN AND CONSTRUCTION OF THE PROJECT AND SHALL NOT BE RESPONSIBLE FOR ANY REUSE OF THIS DRAWING FOR ANY OTHER PROJECT.

SAM'S MART
4965 UNIVERSITY PARKWAY
WINSTON-SALEM, NC 27106

JOB NUMBER: 07-17-80003

ISSUE BLOCK

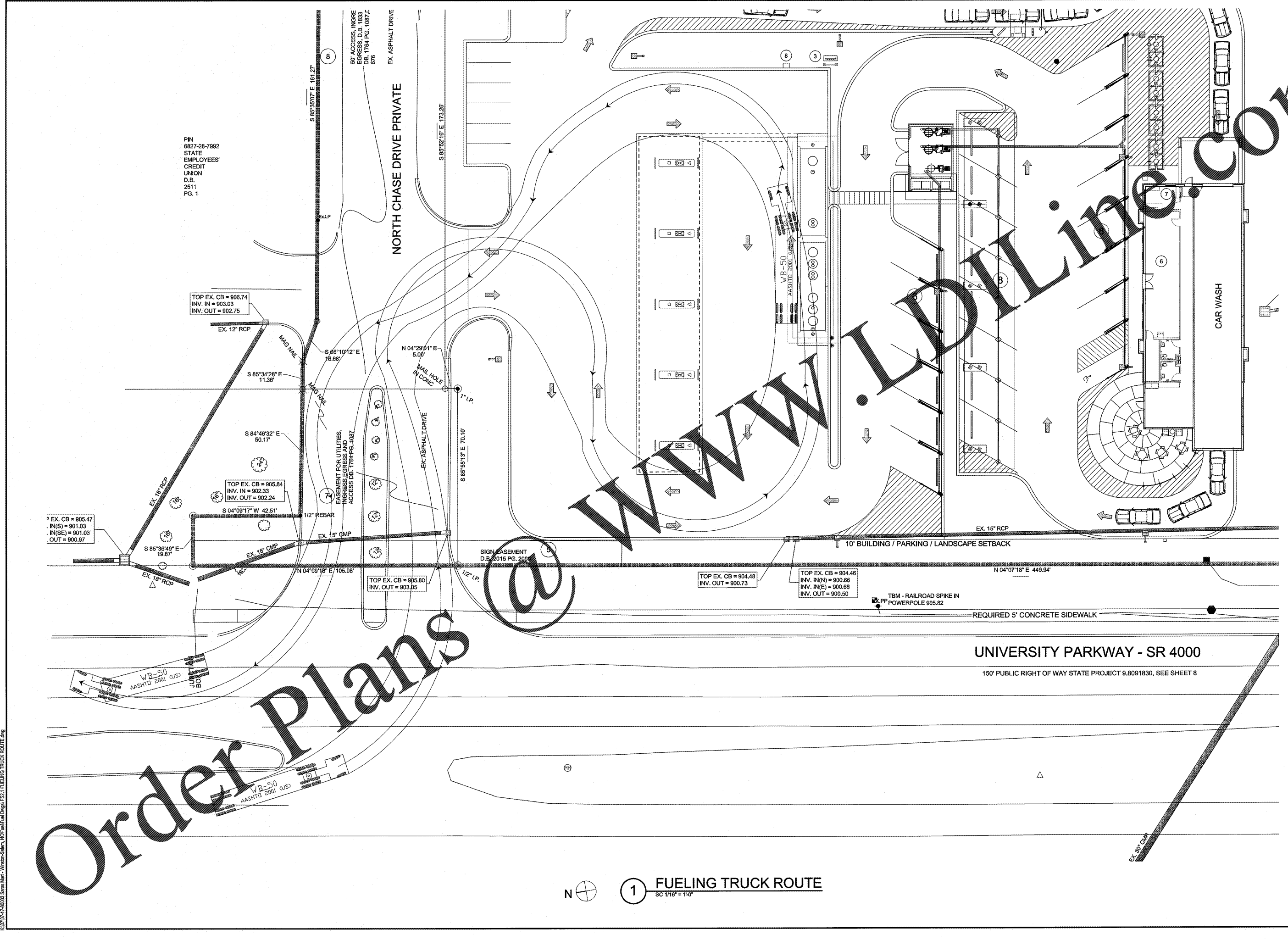
NO.	DATE	DESCRIPTION

STORE NO: _____
DOCUMENT DATE: 06-08-17
CHECKED BY: BKH
DRAWN BY: JMA
PROTO CYCLE: MAY-2017

FOR REFERENCE ONLY

FUELING TRUCK ROUTE

SHEET FS2.1



PIN
6827-28-7992
STATE
EMPLOYEES'
CREDIT
UNION
D.B.
2511
PG. 1

NORTH CHASE DRIVE PRIVATE

UNIVERSITY PARKWAY - SR 4000
150' PUBLIC RIGHT OF WAY STATE PROJECT 9.8091830, SEE SHEET 8

1 FUELING TRUCK ROUTE
SC 1/16" = 1'-0"

Order Plans @