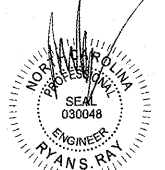


**STIPULATION FOR REUSE**  
THIS DRAWING HAS BEEN PREPARED FOR THE USE OF A SPECIFIC PROJECT AND SITE. IT IS NOT TO BE REUSED FOR ANY OTHER PROJECT OR SITE WITHOUT THE WRITTEN CONSENT OF HARRISON FRENCH ASSOCIATES, PLLC. ANY REUSE OF THIS DRAWING FOR ANY OTHER PROJECT OR SITE WITHOUT THE WRITTEN CONSENT OF HARRISON FRENCH ASSOCIATES, PLLC IS AT THE USER'S SOLE RISK AND WITHOUT LIABILITY TO HARRISON FRENCH ASSOCIATES, PLLC. HARRISON FRENCH ASSOCIATES, PLLC DOES NOT WARRANT THE ACCURACY OR COMPLETENESS OF THIS DRAWING FOR ANY OTHER PROJECT OR SITE. HARRISON FRENCH ASSOCIATES, PLLC IS NOT RESPONSIBLE FOR ANY ERRORS OR OMISSIONS IN THIS DRAWING. HARRISON FRENCH ASSOCIATES, PLLC IS NOT RESPONSIBLE FOR ANY CONSEQUENCES OF THE USE OF THIS DRAWING FOR ANY OTHER PROJECT OR SITE.

**SAM'S MART**  
4965 UNIVERSITY PARKWAY  
WINSTON-SALEM, NC 27106  
JOB NUMBER: 07-17-80003

**ISSUE BLOCK**


STORE NO:  
DOCUMENT DATE: 08-08-17  
CHECKED BY: BKH  
DRAWN BY: JMA  
PROTO CYCLE: MAY-2017



HARRISON FRENCH AND ASSOCIATES, PLLC  
P-0402

JUN 07 2017

**FUELING SITE PLAN**

SHEET: **FS2**

- DEFINING LINE BETWEEN CAR WASH GC AND FUEL GC**
- FUEL CONTRACTOR**
- FUEL GC TO WORK WITH CAR WASH GC ON SCHEDULING.
  - FUEL GC IS RESPONSIBLE FOR ALL CONCRETE OVER THE UNDERGROUND FUEL STORAGE TANKS AND CANOPY SLAB.
  - FUEL GC RESPONSIBLE FOR CANOPY FOOTINGS.
  - FUEL GC TO INSTALL CANOPY DRAINS (WHERE APPLICABLE) TO POINT OF CONNECTION WITHIN (10) FT OF DRIVE SLAB(S).
  - FUEL GC TO INSTALL ALL FUEL RELATED ELECTRONICS (I.E. DATA LOGS, CONTROL UNIT, TURBINE RELAYS, ISOLATION RELAYS, ETC) IN THE UTILITY BUILDING.
  - FUEL GC RESPONSIBLE FOR ALL ELECTRICAL CONDUITS, JUNCTION BOXES, ELECTRICAL J-BOXES PER STATE, LOCAL CODES AND MANUFACTURER'S INSTALLATION INSTRUCTIONS.
  - FUEL GC TO PULL WIRE FOR CANOPY LIGHTS, DISPENSERS, TURBINES AND MONITORING SYSTEM DEVICES.
  - FUEL GC TO MAKE ALL ELECTRICAL CONNECTIONS TO FUELING EQUIPMENT AND ELECTRONICS.
  - FUEL GC TO PULL PERMITS FOR ALL WORK (AS REQUIRED).
  - FUEL GC TO CALL, NOT AND BE PRESENT FOR ALL LOCAL REGULATOR INSPECTIONS AND BE RESPONSIBLE FOR SCHEDULING ON-SITE INSPECTIONS WITH AN APPROPRIATE OWNER'S REPRESENTATIVE RELATED TO FUELING.
  - FUEL GC TO COORDINATE WITH TANKNOLOGY AND THE OWNER'S CONSTRUCTION MANAGER FOR TESTING OF FUELING SYSTEM.
  - FUEL GC TO HAVE PERSONNEL ON SITE FOR TESTING.

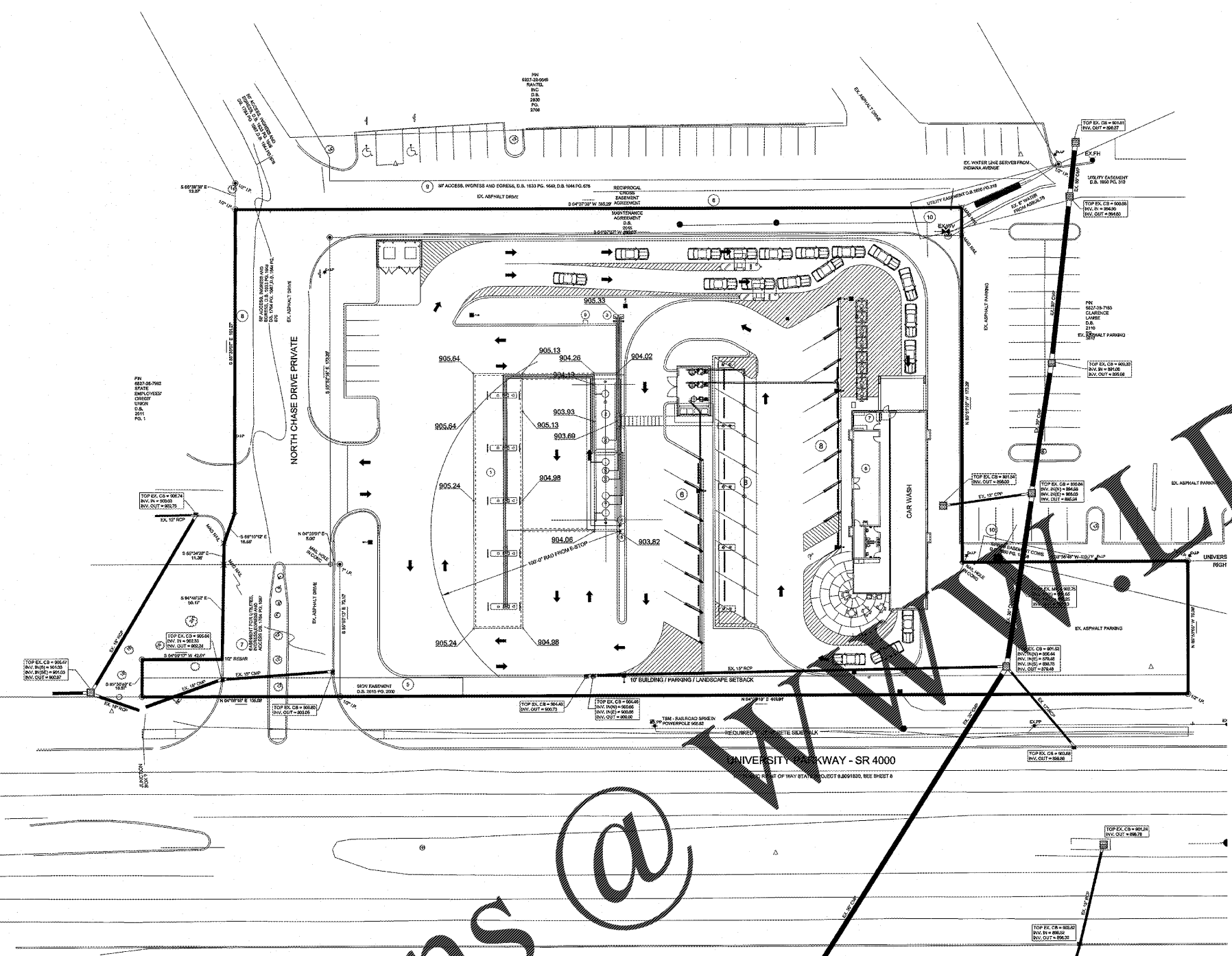
**STRUCTURE INDEX**

1	FUELING CANOPY FOR (5) DISPENSERS
2	UNDERGROUND FUEL STORAGE TANKS AND SLAB
3	REMOTE VENT RISERS AND 5 FT WD HOOP BOLLARD
4	911 EMERGENCY PHONE
5	EMERGENCY SHUT OFF SWITCH
6	CAR WASH BY OTHERS - SHOWN FOR REFERENCE
7	FUEL SITE MONITOR TLS 450R IN THE OFFICE OF CAR WASH
8	AIR MACHINE

**TANK BURIAL CHART - WINSTON-SALEM, NC**

COMPONENT	PREMIUM	DIESEL	VENT
A. FINISH GRADE ELEV. AT BEGINNING OF RUN (FT):	905.51	905.51	905.33
B. PIPE BURY (FT):	3.25	3.25	2
C. ELEVATION OF PIPE AT BEGINNING OF RUN (A-B) (FT):	902.26	902.26	903.33
D. PIPE LENGTH (LONGEST RUN) (FT):	257	102	107
E. PIPING RUN FALL (FT) (0"1.8" PER FT):	2.68	1.06	1.11
F. TOTAL CROSSOVERS/SWING JOINTS:	0	0	0
G. CROSSOVERS/SWING JOINT DEPTH (FT):	0	0	0
H. ELEVATION AT END OF PIPE (FT) (C-E-G):	899.58	901.20	902.22
I. ADD FOR EXTRACTOR TEE AT SUMP:	1	1	1.5
J. TOP TANK ELEVATION (FT) (H-I):	898.58	900.20	900.72
K. HIGHEST FINISH GRADE ELEVATION AT TANK SLAB (FT):	904.19	904.19	904.19
L. MAX BURY DEPTH (K-J)(FT): MAX = 5.67	5.61	3.99	3.47
M. LOWEST FINISH GRADE ELEVATION AT TANKS (FT):	903.69	903.69	903.69
N. MIN BURY DEPTH (M-J) (FT): MIN = 4.17	5.11	3.49	2.97

TANK BURIAL DEPTH IS GOVERNED BY PREMIUM PRODUCT AT 5.61'  
THE TOP OF TANKS SHALL BE SET AT 898.58



**1 ARCHITECTURAL SITE PLAN**  
SC 1/32" = 1'-0"

Order Plans @