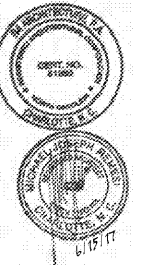


**Project**  
 Sam's Xpress Car Wash  
 4965 University Parkway  
 Winston-Salem, NC 27106

**Owner**  
 Sam's Ma...  
 7935 Council Place  
 Suite 100  
 Matthews, NC 28105



124 Floyd Smith Dr  
 Suite 375  
 Charlotte, NC 28262  
 Tel - 704 - 688-7500

2000 Sam Rittenberg Blvd.  
 Suite 116  
 Charleston, SC 29407  
 Tel - 843 - 531-6848

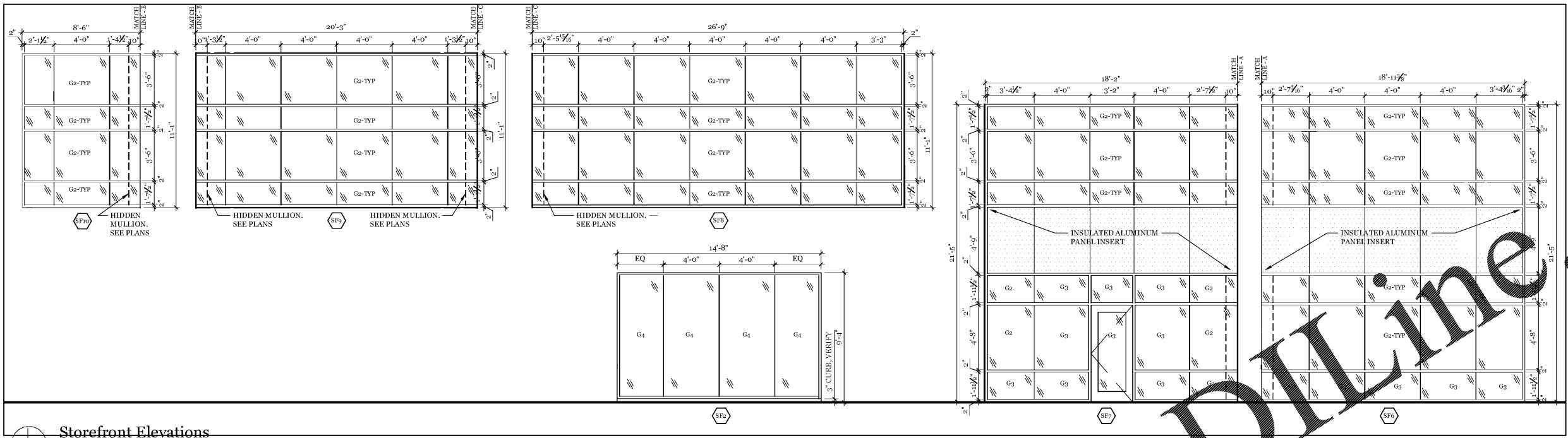
www.R4architecture.com

**Revision**      **Date**

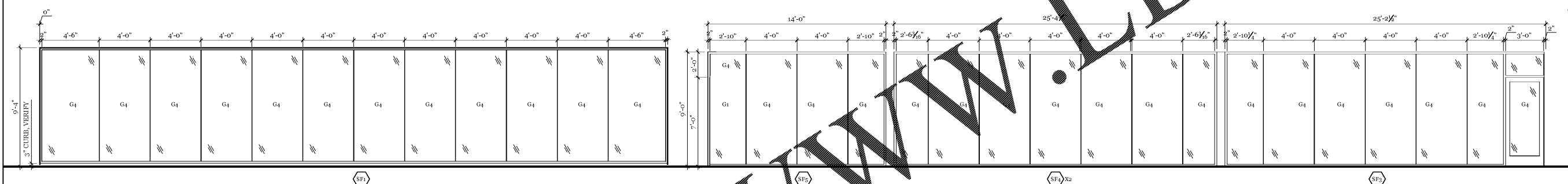
**Drawn By**      TRB  
**Checked By**      MJR  
**Issue Date**      06.15.17  
**Project No**      170382

**Sheet Title**  
 WINDOW & DOOR  
 ELEVATIONS, NOTES  
 & SCHEDULES

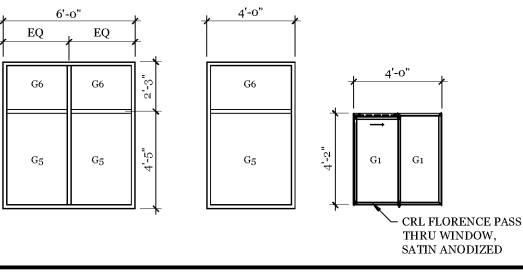
**Sheet Number**  
**A600**



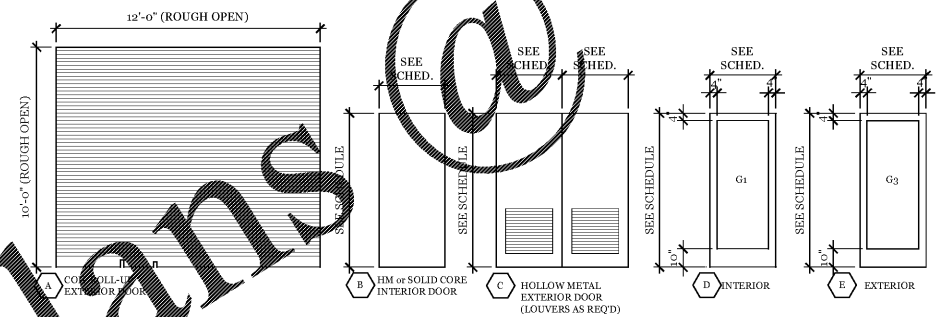
**Storefront Elevations**  
 1/4" = 1'-0"



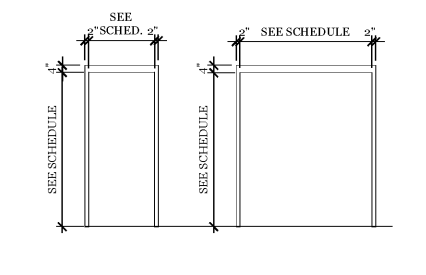
**Storefront Elevations**  
 1/4" = 1'-0"



**Window Elevations**  
 1/4" = 1'-0"



**Door Type Elevations**  
 1/4" = 1'-0"



**Door Frame Type Elevations**  
 1/4" = 1'-0"

**DOOR HARDWARE SETS:**

- HDW-1: ALUMINUM CURTAIN WALL ENTRANCE DOORS**
  - 1 set PIVOT HINGES BY KAWNEER
  - 1 ADAMS-RITE DEAD BOLT W/CONSTRUCTION CORE
  - 1 LOCK TUMBLER CORE BY OWNER
  - 1 set STANDARD PUSH, PULL HARDWARE
  - 1 DOOR CLOSER BY KAWNEER
  - 1 set WEATHER SEAL AND BOTTOM SWEEP
  - 1 H.C. ALUMINUM THRESHOLD
- HDW-2: OFFICE**
  - 1-1/2 PR. HINGES-MCKINNEY 72714, 4 1/2"X 4 1/2", 26D
  - 1 PASSAGE SET WITH DUMMY TRIM ON CORRIDOR SIDE, SCHLAGE SATURN SERIES, 626
  - 1 ELECTRIC STRIKE (FAIL SAFE)
  - 1 CARD READER (SEE NOTES)
  - 1 KICKPLATE-IVES 037 8x34 US32D
  - 1 MOP PLATE-IVES 037 6x34 US32D
  - 1 DOOR CLOSER-SARGENT EN1230-0 XZ SN
  - 3 SILENCERS
  - 1 FLOOR STOP
- HDW-3: EQUIPMENT ROOM (INTERIOR)**
  - 1-1/2 PR. HINGES-MCKINNEY 72714, 4 1/2"X 4 1/2", 26D
  - 1 LOCKSET - SIMPLEX L1021 CYLINDRICAL LOCK, COMBINATION ENTRY W/KEY OVERRIDE
  - 1 KICKPLATE-IVES 037 8x34 US32D
  - 1 MOP PLATE-IVES 037 6x34 US32D
  - 1 DOOR CLOSER-SARGENT EN1230-0 XZ SN
  - 3 SILENCERS
  - 1 FLOOR STOP
  - 1 THRESHOLD - PEMKO 115 INTERLOCKING
- HDW-4: EQUIPMENT ROOM (EXTERIOR DOUBLE\*)**
  - \* Note hardware for Active vs. Inactive Leaf
  - 1 Leaf: CONT. STAINLESS STEEL PIANO HINGE(304 STAINLESS)
  - Active: ELECTRIC POWER TRANSFER (EPT) HINGE - MCKINNEY
  - 1 Active: ELECTROMECHANICAL FAIL SAFE LOCKSET W/LEVER HANDLES
  - 1 Inactive: CARD READER (SEE NOTES)
  - Inactive: MORTISE STRIKE RECEIVER SET FOR LOCKSET
  - 1 Inactive: KICKPLATE-IVES 037, 8X42 US32D
  - Active: DOOR CLOSER-SARGENT EN350 PS X SN
  - Inactive: TOP/BOTTOM SURFACE BOLT
  - 1 Inactive: OVERHEAD STOP W/HOLD-OPEN
  - 1 Active: SET WEATHER SEAL AND BOTTOM SWEEP
  - 1 ALUM. THRESHOLD
  - Active: FULL HEIGHT ASTRAGAL
- HDW-5: RESTROOMS**
  - 1-1/2 PR. HINGES-MCKINNEY 72714, 4 1/2"X 4 1/2", 26D
  - 1 PASSAGE SET - SCHLAGE SATURN SERIES, 626
  - 1 DEADBOLT - SCHLAGE B751626 - ADA
  - 1 KICKPLATE-IVES 037 8x34 US32D
  - 1 MOP PLATE-IVES 037 6x34 US32D
  - 1 DOOR CLOSER-SARGENT EN1230-0 XZ SN
  - 3 SILENCERS
  - 1 FLOOR STOP
- HDW-6: ELECTRICAL ROOM**
  - 2 PR. HINGES-MCKINNEY 72714, 4 1/2"X 4 1/2", 26D
  - 1 PANIC BAR WITH RIGID OUTSIDE LEVER
  - 1 ELECTRIC STRIKE (FAIL SAFE)
  - 1 CARD READER (SEE NOTES)
  - 1 KICKPLATE-IVES 037 8x34 US32D
  - 1 DOOR CLOSER-SARGENT EN1230-0 XZ SN
  - 3 SILENCERS
  - 1 FLOOR STOP
  - 1 THRESHOLD - PEMKO 115 INTERLOCKING
- HDW-7: MAINTENANCE MEZZANINE**
  - 1-1/2 PR. HINGES-MCKINNEY 72714, 4 1/2"X 4 1/2", 26D
  - 1 PASSAGE SET - SCHLAGE SATURN SERIES, 626
  - 3 SILENCERS

No.	Room Name	Size	Door Material	Manufacturer	Glass	Frame	Notes
01	Wash Bay	12'-0" x 10'-0" (ROUGH OPEN)	A	Aluminum	None Dalton	Aluminum	Model 900 Clear Anodized Aluminum Slat No. 17. Provide 8" Bottom Bar. GC coordinate Bottom Bar Cut-out for wash track. Provide exterior mounted lock.
02	--	Not Used					
03	Wash Bay	3'-0" x 7'-0" x 1 3/4"	B	Aluminum		G1	Deadbolt lock must meet ADA. See DOOR and WINDOW NOTES #6
04	Viewing Corridor	3'-0" x 7'-0" x 1 3/4"	E	Aluminum		G3	Deadbolt lock must meet ADA. See DOOR and WINDOW NOTES #6
05	Office	3'-0" x 7'-0" x 1 3/4"	B	HPL	Marlite	2*	HM Wilsonart Williamsburg Cherry. * Electrified hardware allows free ingress/egress with loss of power.
06	Equipment Room	3'-0" x 7'-0" x 1 3/4"	B	HPL	Marlite	3*	HM Wilsonart Williamsburg Cherry.
07	Equipment Room	3'-0" x 8'-0" x 1 3/4"	C	HM	CECO	4*	HM Imperial. Louvers to include bug screen. Paint Sherwin Williams Pro Industrial Acrylic Coating Glass door & frame. Verify Active vs. Inactive leaf with owner. * Electromechanical Lockset reverts to mechanical operation with free egress and key operated ingress.
08	Men's Room	3'-0" x 7'-0" x 1 3/4"	B	HPL	Marlite	5	HM Wilsonart Williamsburg Cherry. Provide ADA Accessible Men/Women Signage
09	Women's Room	3'-0" x 7'-0" x 1 3/4"	B	HPL	Marlite	5	HM Wilsonart Williamsburg Cherry. Provide ADA Accessible Men/Women Signage
10	Lounge	3'-0" x 7'-0" x 1 3/4"	E	Aluminum		G3	1 Aluminum Deadbolt lock must meet ADA. See DOOR and WINDOW NOTES #6
11	Electrical	3'-0" x 8'-0" x 1 3/4"	B	HM	CECO	6*	HM Paint Sherwin Williams Pro Industrial Acrylic Coating Glass door and frame. * Electrified hardware allows free ingress/egress with loss of power.
12	Maintenance Mezz.	3'-0" x 3'-6" x 1 3/4"	B	Wood		7	Wood Paint door and frame to match adjacent wall.

**DOOR AND WINDOW NOTES**

- ALUMINUM MATERIAL FOR DOORS AND STOREFRONT FRAMES SHALL BE STANDARD COMMERCIAL GRADE EXTRUDED SHAPES WITH ANODIZED ALUMINUM FINISH. ALUMINUM GRADE AA ALLOY 6063-T5. THE BOTTOM STILE OF THE DOOR SHALL BE A MIN OF 10" OR MATCHING SOLID PANEL SHALL BE INSTALLED TO ALLOW WHEELCHAIR FOOTREST TO STRIKE THE DOOR WITHOUT CREATING A HAZARD.
- HOLLOW METAL DOORS SHALL BE 18 GA. STEEL WITH INSULATED CORES.
- HOLLOW METAL FRAMES SHALL BE 16 GA. W/SEALANT ALL AROUND BETWEEN FRAME AND ADJACENT SURFACE.
- UNLESS NOTED OTHERWISE, PROVIDE ALUMINUM THRESHOLD AND WEATHER SEALS AT ALL EXTERIOR DOORS.
- ALL STEEL DOORS AND FRAMES TO MEET STEEL DOOR INSTITUTE SD100 SPECIFICATIONS.
- ALUMINUM FRAME - COORDINATE FRAME CONSTRUCTION AND REINFORCING REQUIREMENTS WITH DOOR/FRAME HARDWARE.

**GLASS SCHEDULE**

- G1- 1/4" CLEAR TEMPERED GLASS
- G2- 1" INSULATED CLEAR
- G3- 1" INSULATED CLEAR TEMPERED GLASS
- G4- 1/2" CLEAR TEMPERED BUTT GLAZED
- G5- 1" INSULATED GRAY TINT
- G6- 1" INSULATED SPANDREL GLASS, COLOR WARM GRAY

**WINDOW AND DOOR NOTES**

- ALUMINUM STOREFRONT TO BE CLEAR ANODIZED ALUMINUM
- ALUMINUM STOREFRONT BASED ON KAWNEER TRIFAB V0451T SSG OR WEATHERSEAL SYSTEMS.
- ALL GLAZING SHALL COMPLY AS INDICATED ON COMCHECK ON SHEET G002.  
 U-FACTOR: MINIMUM - 0.650  
 SHGC: MAXIMUM - 0.40