

Project

Sam's Xpress Car Wash
4965 University Parkway
Winston-Salem, NC 27106

Owner
Sam's Market
4935 Mountain Place
Suite 200
Matthews, NC 28105



124 Floyd Smith Dr
Suite 375
Charlotte, NC 28262
Tel - 704 - 688-7500

2000 Sam Rittenberg Blvd.
Suite 116
Charleston, SC 29407
Tel - 843 - 531-6848

www.R4architecture.com

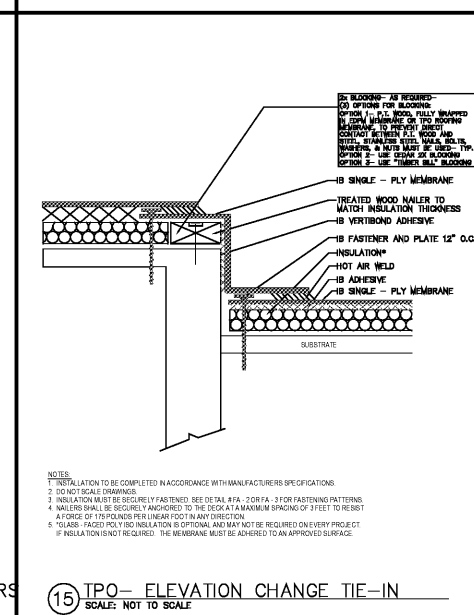
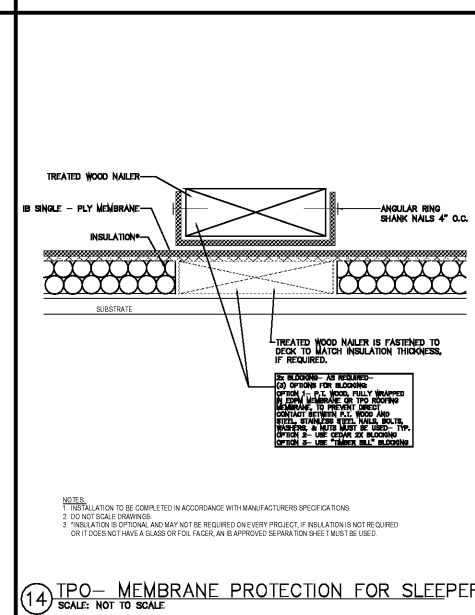
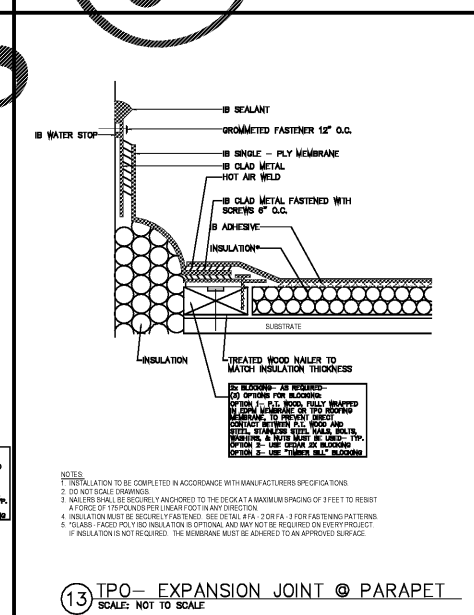
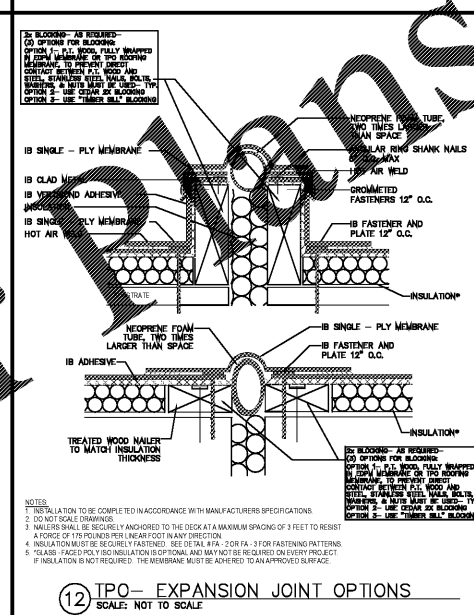
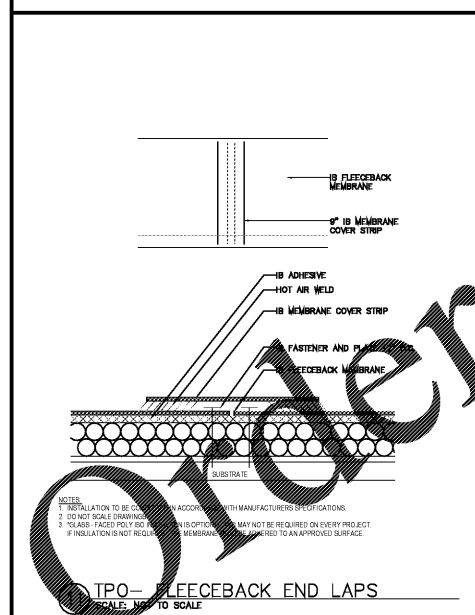
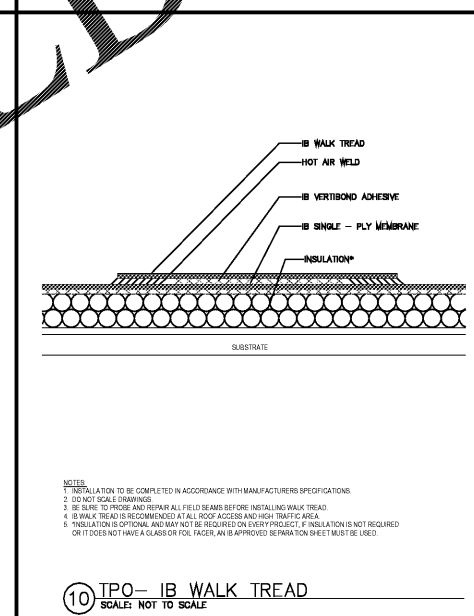
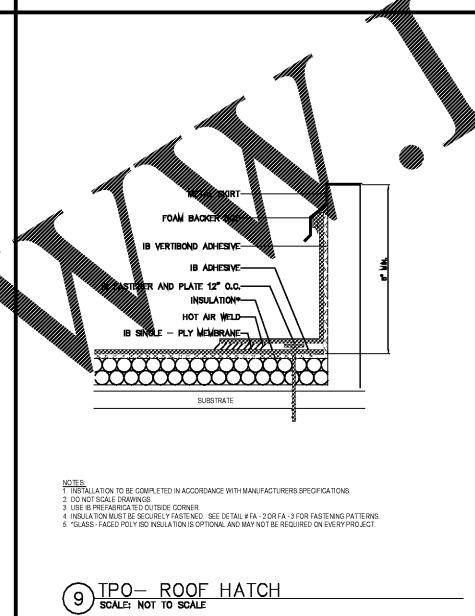
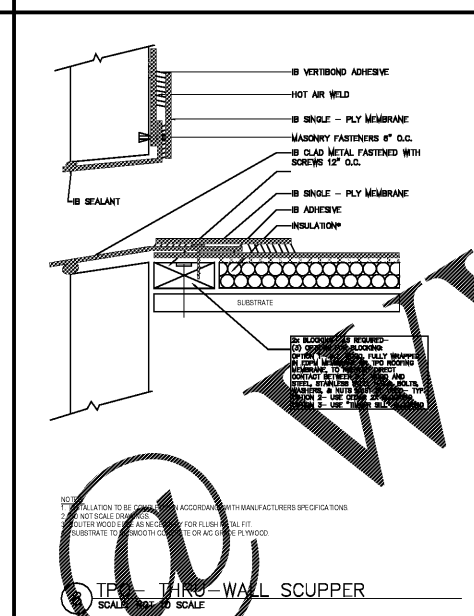
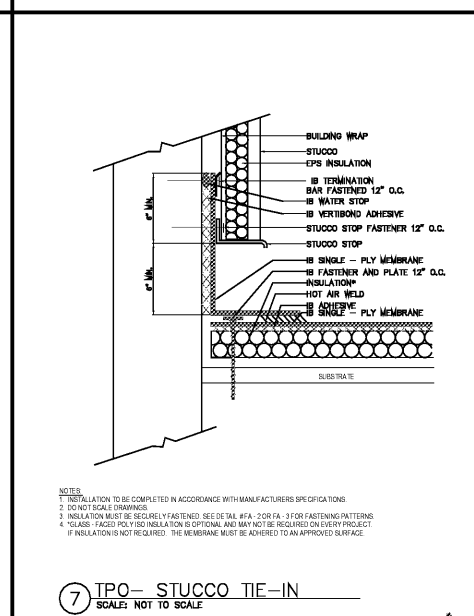
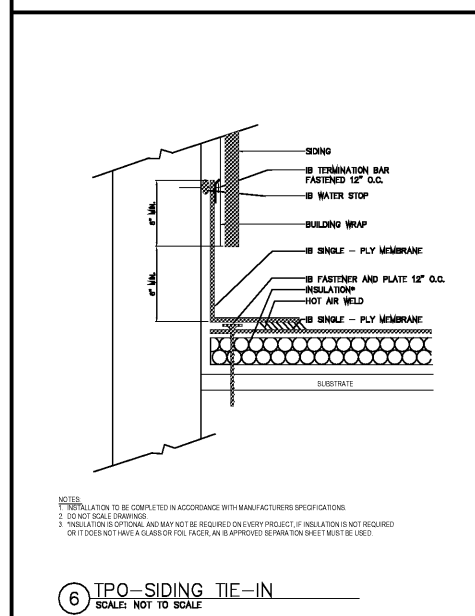
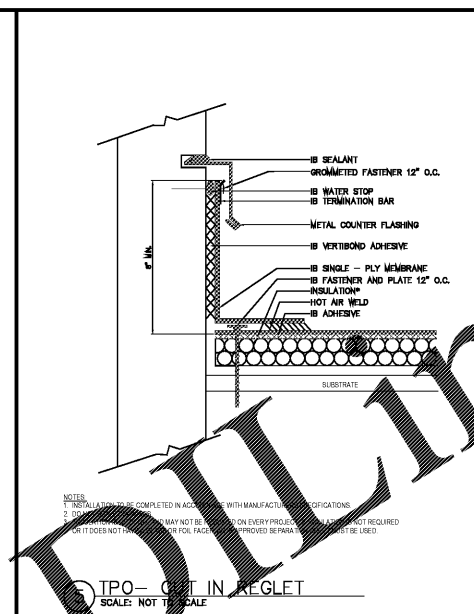
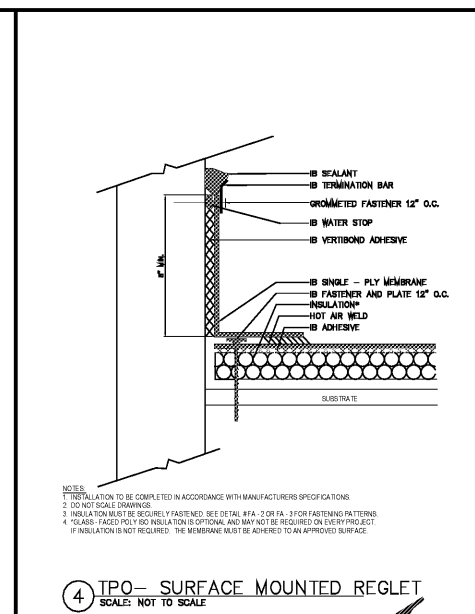
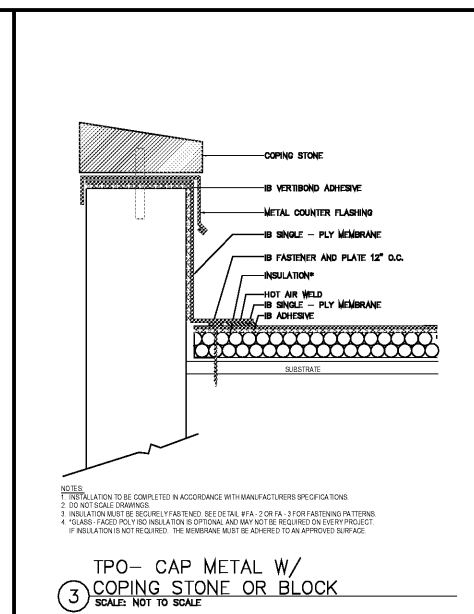
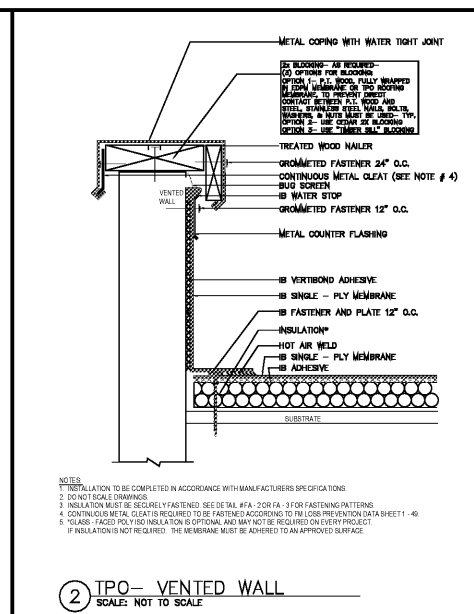
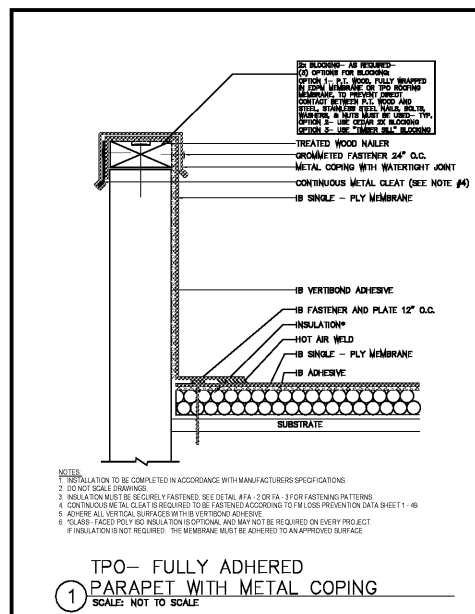
Revision Date

Drawn By TRB
Checked By MJR
Issue Date 06.15.17
Project No 170382

Sheet Title
GENERAL DETAILS
MEMBRANE ROOFING

Sheet Number

A450



GENERAL NOTES - MEMBRANE ROOFING:

- THESE DETAILS ARE RELATED AND INTENDED ONLY FOR REFERENCE TO THE MEMBRANE FLASHING DETAILS NOT THE TOTAL SYSTEM.
- SEE ROOF PLAN AND WALL SECTIONS FOR ADDITIONAL INFORMATION.
- SEE ROOF PLAN AND ENERGY CODE SUMMARY FOR REQUIRED ROOF INSULATION VALUES.
- NOT ALL DETAILS ARE APPLICABLE FOR THE PROJECT. CONTRACTOR TO PROVIDE PROJECT SPECIFIC DETAILS FOR CLARIFICATION PRIOR TO INSTALLATION.
- THESE DETAILS ARE FOR ILLUSTRATIVE PURPOSES ONLY. ALL ROOF AND FLASHING SYSTEMS TO BE INSTALLED PER MANUFACTURER'S WRITTEN INSTRUCTIONS AND SPECIFICATIONS. CONTACT MANUFACTURER FOR ANY INSTALLATION QUESTIONS - TYP.
- ALL THRU PENETRATIONS AND TERMINATION (WHETHER NEW OR EXISTING) SHALL BE WATER AND WEATHER TIGHT - TYP. G.C. SHALL NOTIFY ARCHITECT IF ANY FIELD CONDITIONS PREVENT THIS - TYP.
- PROVIDE WRAPPED ROOF OR CRICKETS AS REQUIRED TO ENSURE WATER DRAINS PROPERLY FROM ALL LOCATIONS ON ROOF - TYP.
- WHERE 2:X BLOCKING IS REQUIRED: (3) OPTIONS FOR BLOCKING: OPT. 1: P.T. WOOD, FULLY WRAPPED IN EPDM MEMBRANE OR TPO ROOFING MEMBRANE TO PREVENT DIRECT CONTACT WITH STEEL. STAINLESS STEEL, NAILS, BOLTS, WASHERS, OR NUTS MUST BE USED - TYP. OPT. 2: USE CEDAR 2X BLOCKING OPT. 3: USE "TIMBER SHIP BLOCKING"
- CONTINUE CAULK AT ALL FLASHING. DETAILS BETWEEN MATERIALS - TYP.
- CAULK ALL FLASHING, JOINTS OR OVERLAPS - TYP.

NOTES:
1. INSTALLATION TO BE COMPLETED IN ACCORDANCE WITH MANUFACTURER'S SPECIFICATIONS.
2. DO NOT SCALE DRAWINGS.
3. INSULATION MUST BE SECURELY FASTENED. SEE DETAIL #FA-2 OR FA-3 FOR FASTENING PATTERNS.
4. CONTINUE METAL CLEAT (REQUIRED TO BE FASTENED ACCORDING TO FM LOSS PREVENTION DATA SHEET 1-4)
5. CLASS-FACED POLY ISO INSULATION IS OPTIONAL AND MAY NOT BE REQUIRED ON EVERY PROJECT.
6. IF INSULATION IS NOT REQUIRED, THE MEMBRANE MUST BE ADHERED TO AN APPROVED SURFACE.

NOTES:
1. INSTALLATION TO BE COMPLETED IN ACCORDANCE WITH MANUFACTURER'S SPECIFICATIONS.
2. DO NOT SCALE DRAWINGS.
3. INSULATION MUST BE SECURELY FASTENED. SEE DETAIL #FA-2 OR FA-3 FOR FASTENING PATTERNS.
4. CONTINUE METAL CLEAT (REQUIRED TO BE FASTENED ACCORDING TO FM LOSS PREVENTION DATA SHEET 1-4)
5. CLASS-FACED POLY ISO INSULATION IS OPTIONAL AND MAY NOT BE REQUIRED ON EVERY PROJECT.
6. IF INSULATION IS NOT REQUIRED, THE MEMBRANE MUST BE ADHERED TO AN APPROVED SURFACE.

NOTES:
1. INSTALLATION TO BE COMPLETED IN ACCORDANCE WITH MANUFACTURER'S SPECIFICATIONS.
2. DO NOT SCALE DRAWINGS.
3. INSULATION MUST BE SECURELY FASTENED. SEE DETAIL #FA-2 OR FA-3 FOR FASTENING PATTERNS.
4. CONTINUE METAL CLEAT (REQUIRED TO BE FASTENED ACCORDING TO FM LOSS PREVENTION DATA SHEET 1-4)
5. CLASS-FACED POLY ISO INSULATION IS OPTIONAL AND MAY NOT BE REQUIRED ON EVERY PROJECT.
6. IF INSULATION IS NOT REQUIRED, THE MEMBRANE MUST BE ADHERED TO AN APPROVED SURFACE.

NOTES:
1. INSTALLATION TO BE COMPLETED IN ACCORDANCE WITH MANUFACTURER'S SPECIFICATIONS.
2. DO NOT SCALE DRAWINGS.
3. INSULATION MUST BE SECURELY FASTENED. SEE DETAIL #FA-2 OR FA-3 FOR FASTENING PATTERNS.
4. CONTINUE METAL CLEAT (REQUIRED TO BE FASTENED ACCORDING TO FM LOSS PREVENTION DATA SHEET 1-4)
5. CLASS-FACED POLY ISO INSULATION IS OPTIONAL AND MAY NOT BE REQUIRED ON EVERY PROJECT.
6. IF INSULATION IS NOT REQUIRED, THE MEMBRANE MUST BE ADHERED TO AN APPROVED SURFACE.

NOTES:
1. INSTALLATION TO BE COMPLETED IN ACCORDANCE WITH MANUFACTURER'S SPECIFICATIONS.
2. DO NOT SCALE DRAWINGS.
3. INSULATION MUST BE SECURELY FASTENED. SEE DETAIL #FA-2 OR FA-3 FOR FASTENING PATTERNS.
4. CONTINUE METAL CLEAT (REQUIRED TO BE FASTENED ACCORDING TO FM LOSS PREVENTION DATA SHEET 1-4)
5. CLASS-FACED POLY ISO INSULATION IS OPTIONAL AND MAY NOT BE REQUIRED ON EVERY PROJECT.
6. IF INSULATION IS NOT REQUIRED, THE MEMBRANE MUST BE ADHERED TO AN APPROVED SURFACE.