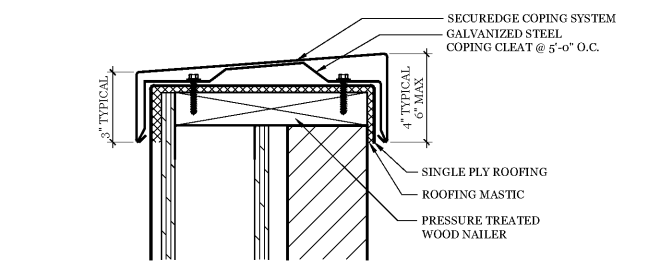
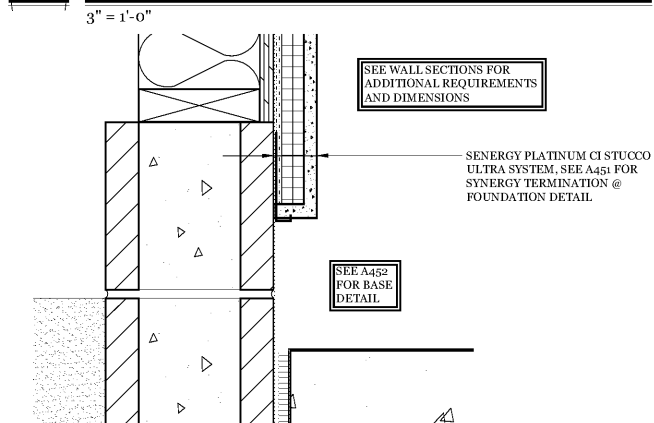


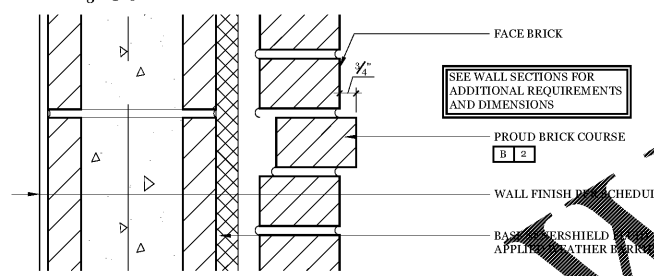
15 HEAD DETAIL AT INTERIOR STOREFRONT  
3" = 1'-0"



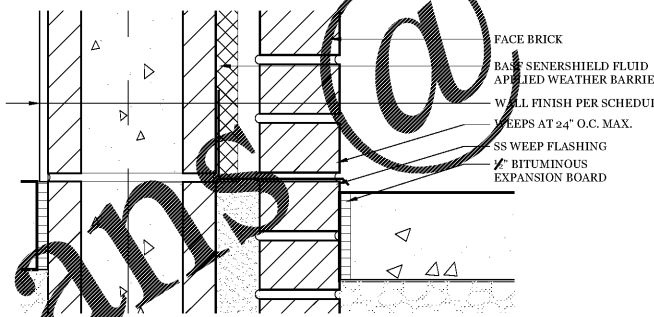
13 DETAIL: PREFINISHED COPING, TYPICAL  
3" = 1'-0"



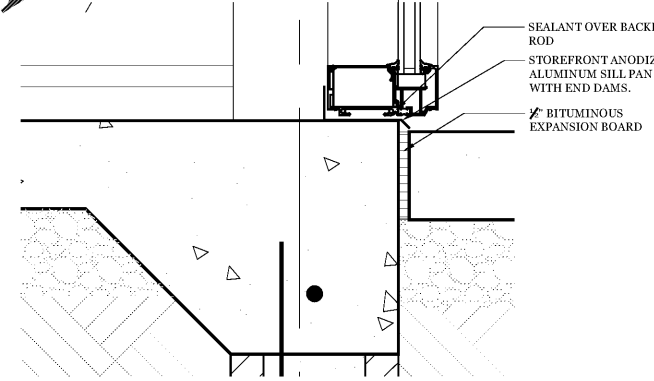
12 DETAIL: STUCCO TERMINATION  
3" = 1'-0"



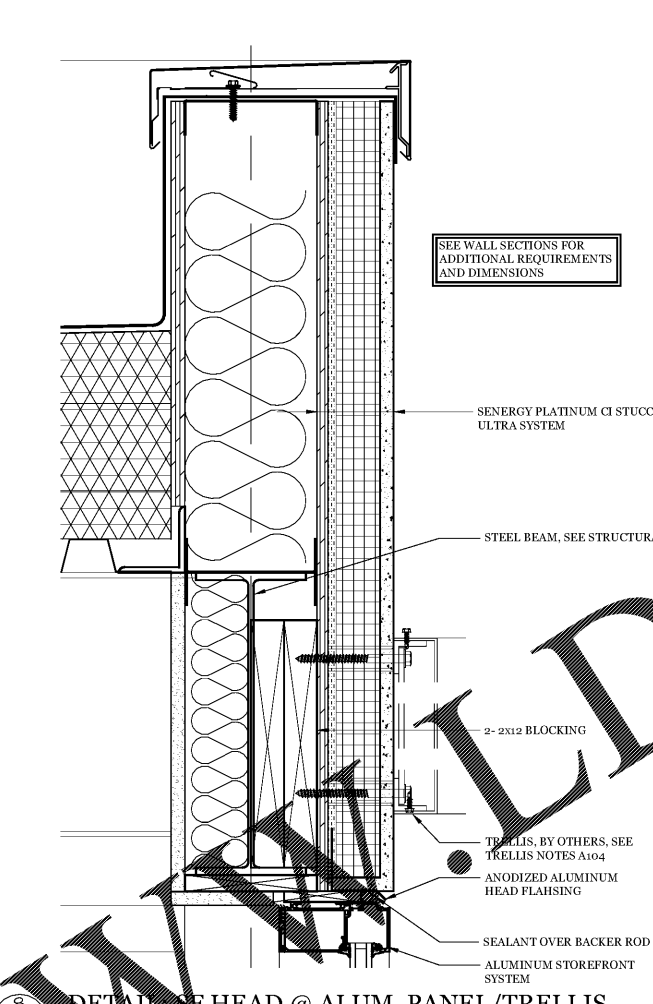
8 DETAIL: HEAD @ ALUM. PANEL/TRELLIS  
3" = 1'-0"



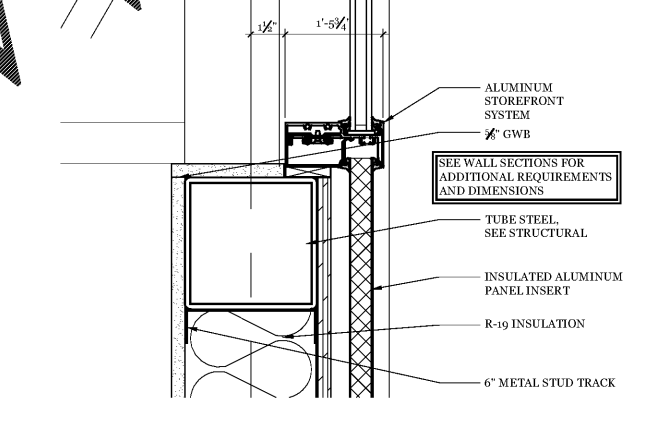
7 DETAIL: BRICK @ PAVING  
3" = 1'-0"



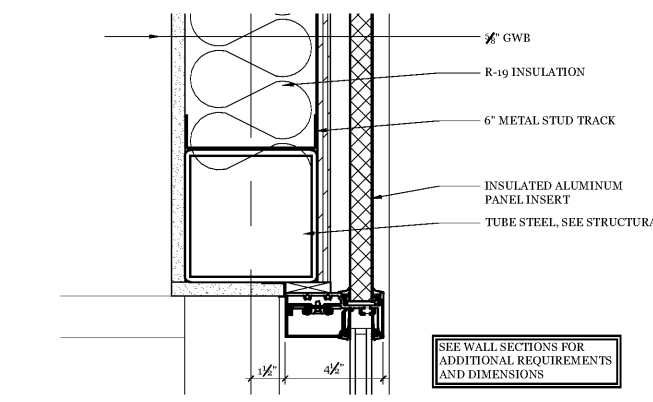
9 DETAIL: STOREFRONT SILL  
3" = 1'-0"



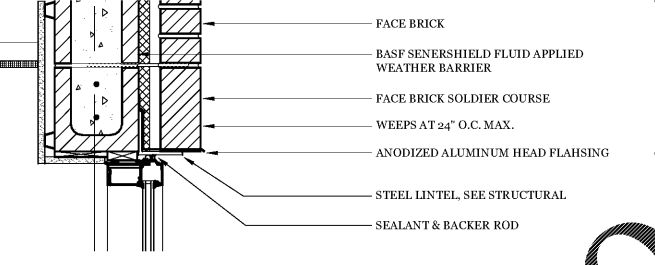
4 DETAIL: STOREFRONT WINDOW SILL  
3" = 1'-0"



7 DETAIL: STOREFRONT SILL @ SPANDREL  
3" = 1'-0"



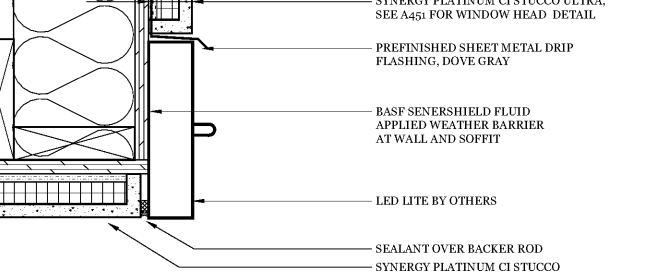
6 DETAIL: STOREFRONT HEAD @ SPANDREL  
3" = 1'-0"



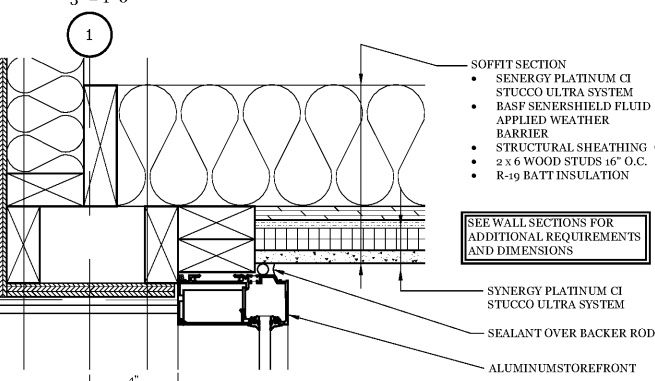
5 DETAIL: STOREFRONT WINDOW SILL  
1-1/2" = 1'-0"



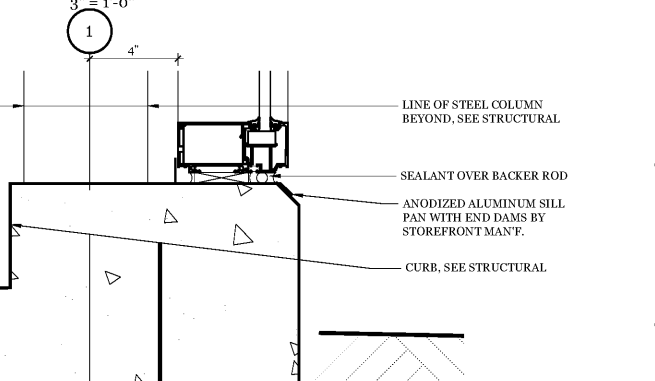
4 DETAIL: STOREFRONT WINDOW SILL  
3" = 1'-0"



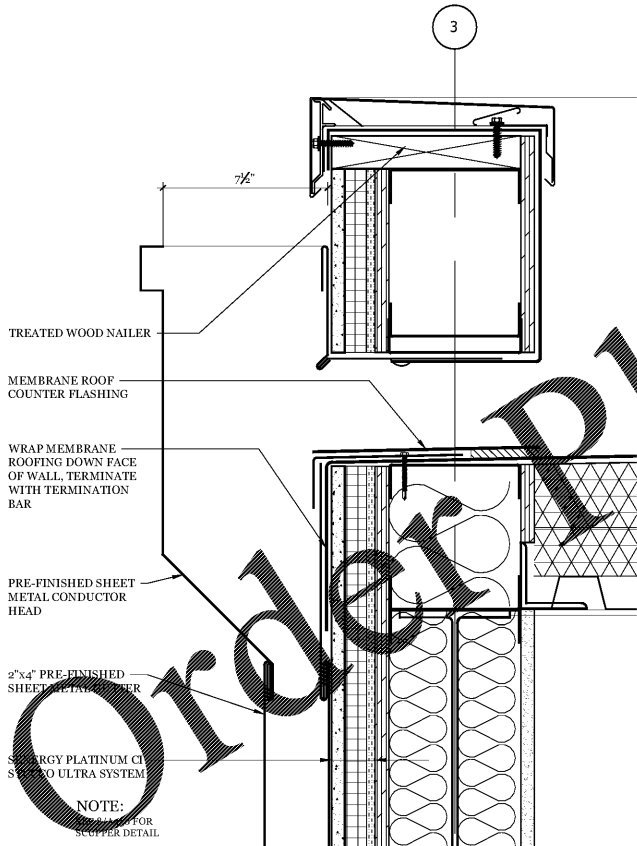
3 DETAIL: LED ACCENT LITE  
3" = 1'-0"



1 DETAIL: STOREFRONT HEAD @ SOFFIT  
3" = 1'-0"



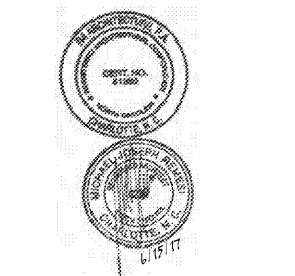
2 DETAIL: STOREFRONT SILL  
3" = 1'-0"



14 DETAIL: SCUPPER (OVERFLOW SCUPPER SIM)  
3" = 1'-0"

**Project**  
Sam's Xpress Car Wash  
4965 University Parkway  
Winston-Salem, NC 27106

**Owner**  
Sam's Ma  
9935 Council Place  
Suite 100  
Matthews, NC 28105



124 Floyd Smith Dr  
Suite 375  
Charlotte, NC 28262  
Tel - 704 - 688-7500

2000 Sam Rittenberg Blvd.  
Suite 116  
Charleston, SC 29407  
Tel - 843 - 531-6848

[www.R4architecture.com](http://www.R4architecture.com)

Revision Date

Drawn By TRB  
Checked By MJR  
Issue Date 06.15.17  
Project No 170382

Sheet Title  
SECTION DETAILS

Sheet Number  
**A426**