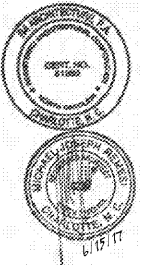


Project

Sam's Xpress Car Wash
4965 University Parkway
Winston-Salem, NC 27106

Owner
Sam's Mart
7933 Council Place
Suite 200
Matthews, NC 28105



124 Floyd Smith Dr
Suite 375
Charlotte, NC 28262
Tel - 704 - 688-7500

2000 Sam Rittenberg Blvd.
Suite 116
Charleston, SC 29407
Tel - 843 - 531-6848

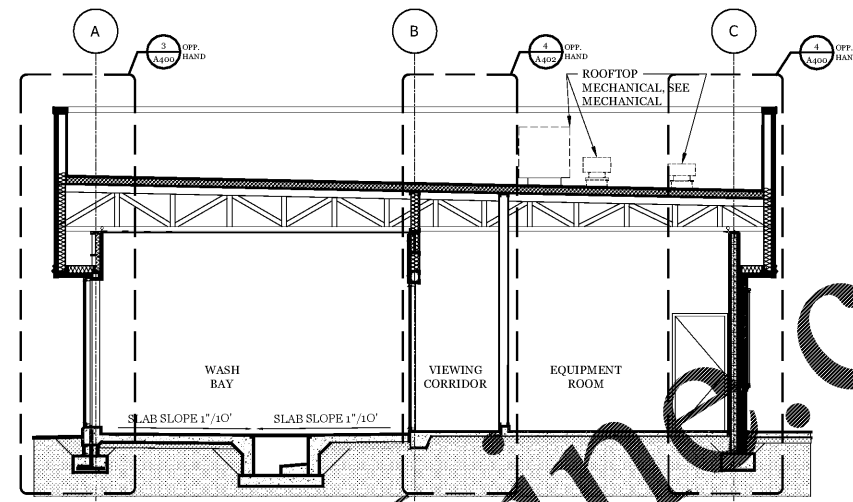
www.R4architecture.com

Revision **Date**

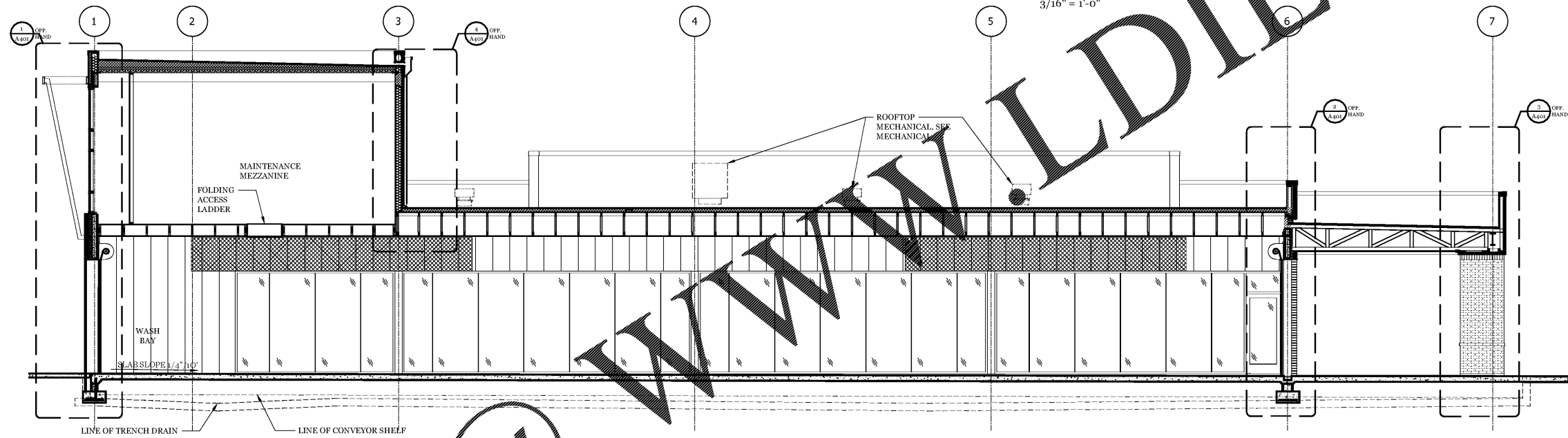
Drawn By TRB
Checked By MJR
Issue Date 06.15.17
Project No 170382

Sheet Title
BUILDING SECTIONS

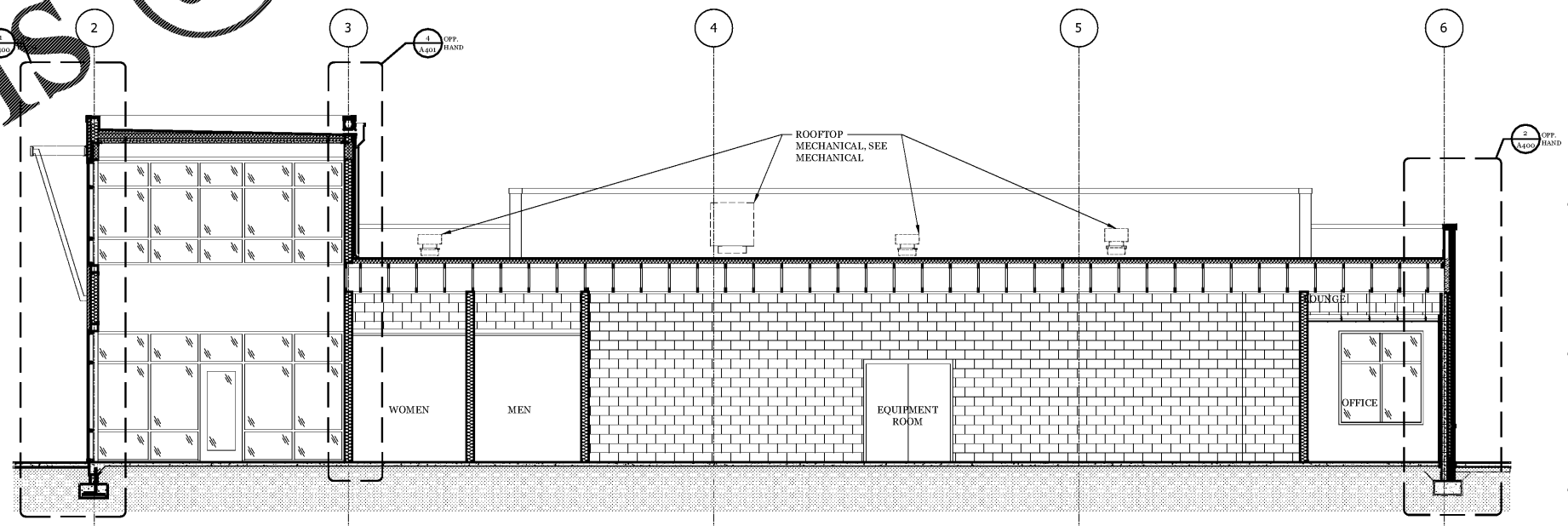
Sheet Number
A300



3 Building Section: Wash Bay / Equipment Room
3/16" = 1'-0"



2 Building Section: Wash Bay
3/16" = 1'-0"



1 Building Section: Equipment Room / Lounge
3/16" = 1'-0"

Order Plans @

WWW.LDILLINE.COM

ALL RIGHTS RESERVED. NO PART OF THIS DOCUMENT IS TO BE REPRODUCED, STORED IN A RETRIEVING SYSTEM, OR TRANSMITTED IN ANY FORM OR BY ANY MEANS, ELECTRONIC OR MECHANICAL, INCLUDING PHOTOCOPYING, RECORDING, OR BY ANY INFORMATION STORAGE AND RETRIEVAL SYSTEM, WITHOUT THE WRITTEN PERMISSION OF THE ARCHITECT.