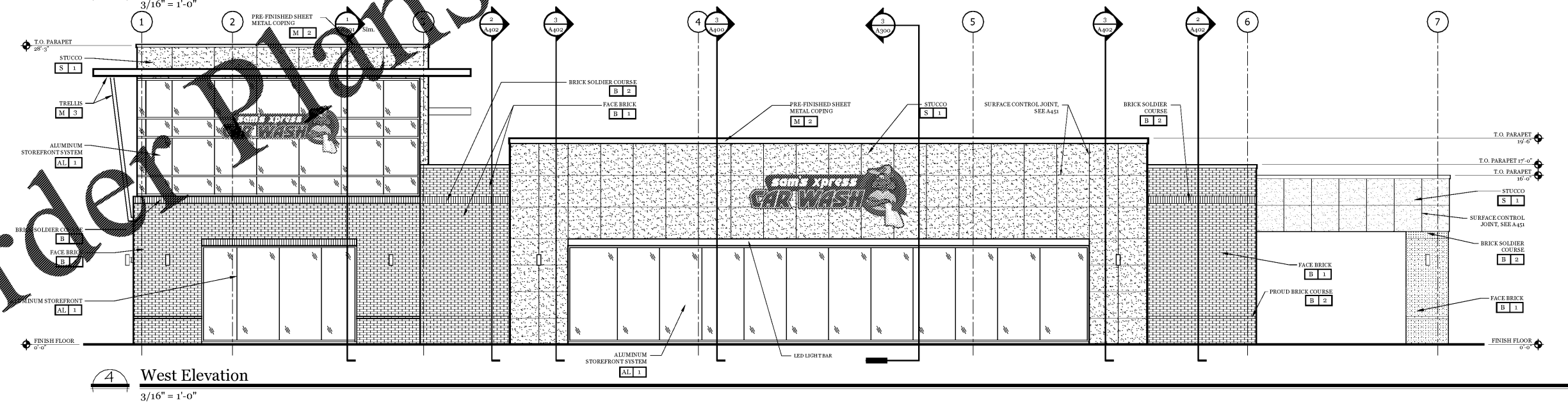
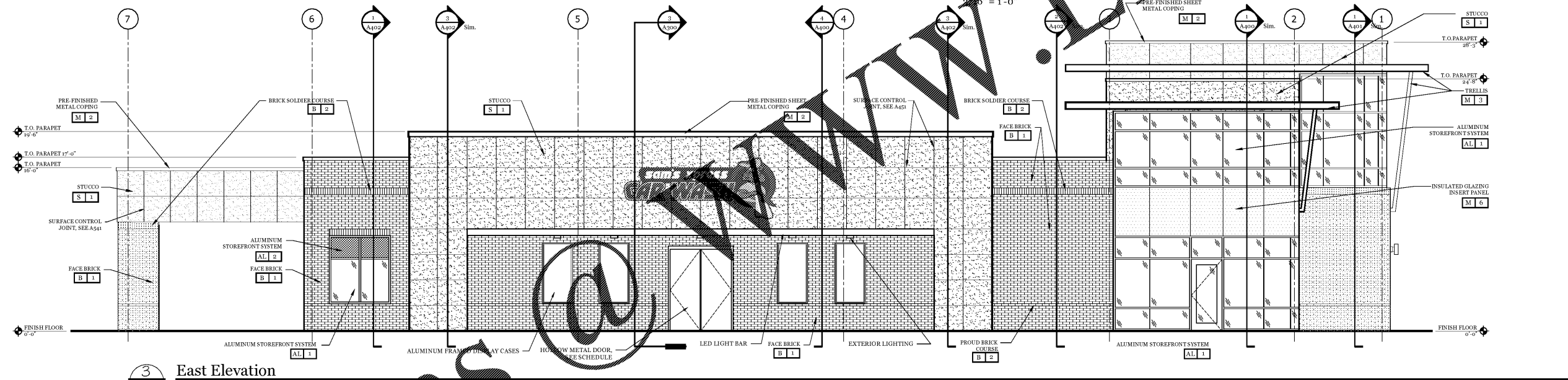
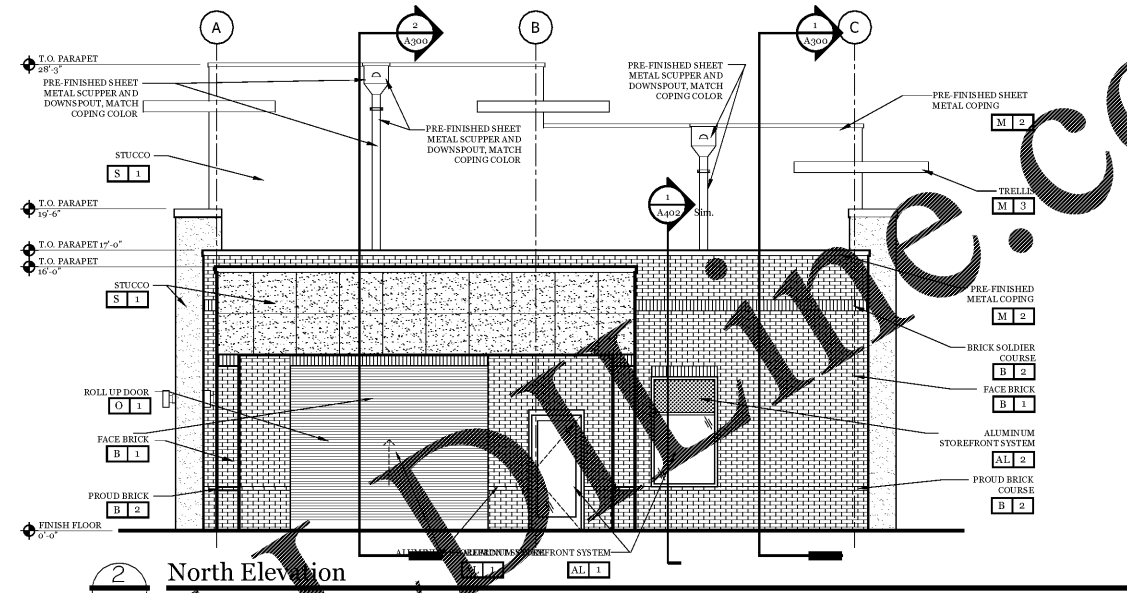
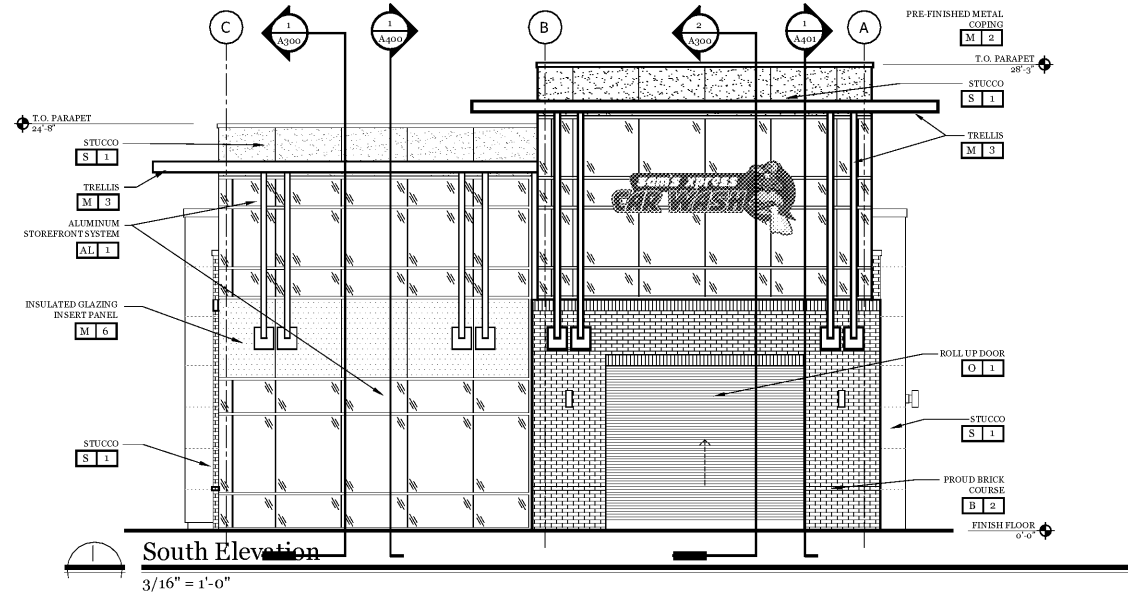


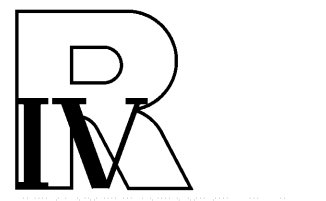
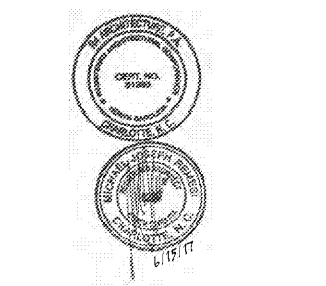
MATERIAL SCHEDULE - EXTERIOR					
KEY	MANUFACTURER	MATERIAL	PRODUCT #	COLOR	NOTES
M 1	CONSTRUCTION METAL PRODUCTS	STANDING SEAM METAL ROOFING	SERIES 2000	REGAL RED	12" PRE-FINISHED, SILICONIZED POLYESTER
M 2	CARLISLE SYNTAC SYSTEMS	PARAPET WALL COPING	SECUREEDGE 300	DOVE GRAY A09	GALVANIZED, PRE-FINISHED, KYNAR 500, 24 GA
M 3	AWNEX	TRELLIS		RED (PANTONE 485C)	PROVIDED AND INSTALLED BY AWNEX UNDER GC CONTRACT
M 6	CITADEL	INSULATED GLAZING INSERT	GLAZE GUARD 1000	CUSTOM KYNAR 500 PURPLE	
S 1	SENERGY	STUCCO-PORTLAND CEMENT	PLATINUM CI STUCCO ULTRA	DOVE GREY	

MATERIAL SCHEDULE - EXTERIOR					
KEY	MANUFACTURER	MATERIAL	PRODUCT #	COLOR	NOTES
B 1	TAYLOR CLAY PRODUCTS	FACE BRICK	322 GRAY	DARK GRAY	RUNNING BOND FACE BRICK
B 2	TAYLOR CLAY PRODUCTS	FACE BRICK	320 GRAY	LIGHT GRAY	SOLDIER COURSE & SILL COURSE
O 1	ROLLING SERVICE DOOR	ROLL UP DOOR	WAYNE DALTON MODEL 900	GRAY	
AL 1	KAWNEER	ALUM. STOREFRONT SYSTEM	TRIFAB VG451T SSG	CLEAR ANODIZED & 1" CLEAR INSUL GLASS	INSTALL CLOSURE PLATES ON BACK OF ALL JAMB PIECES
AL 2	KAWNEER	ALUM. STOREFRONT SYSTEM	TRIFAB VG451T SSG	CLEAR ANODIZED & 1" SPANDREL INSUL GLASS	INSTALL CLOSURE PLATES ON BACK OF ALL JAMB PIECES



Project
Sam's Xpress Car Wash
4965 University Parkway
Winston-Salem, NC 27106

Owner
Sam's Market
935 Fountain Place
Suite 200
Matthews, NC 28105



124 Floyd Smith Dr
Suite 375
Charlotte, NC 28262
Tel - 704 - 688-7500

2000 Sam Rittenberg Blvd.
Suite 116
Charleston, SC 29407
Tel - 843 - 531-6848

www.R4architecture.com

Revision Date

Drawn By TRB
Checked By MJR
Issue Date 06.15.17
Project No 170382

Sheet Title
BUILDING ELEVATIONS

Sheet Number
A200

Order Plans