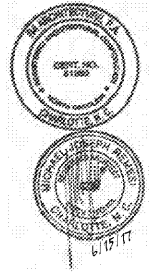


Project

Sam's Xpress Car Wash
4965 University Parkway
Winston-Salem, NC 27106

Owner

Sam's Mart
7933 Council Place
Suite 200
Matthews, NC 28105



124 Floyd Smith Dr
Suite 375
Charlotte, NC 28262
Tel - 704 - 688-7500

2000 Sam Rittenberg Blvd.
Suite 116
Charleston, SC 29407
Tel - 843 - 531-6848

www.R4architecture.com

Revision Date

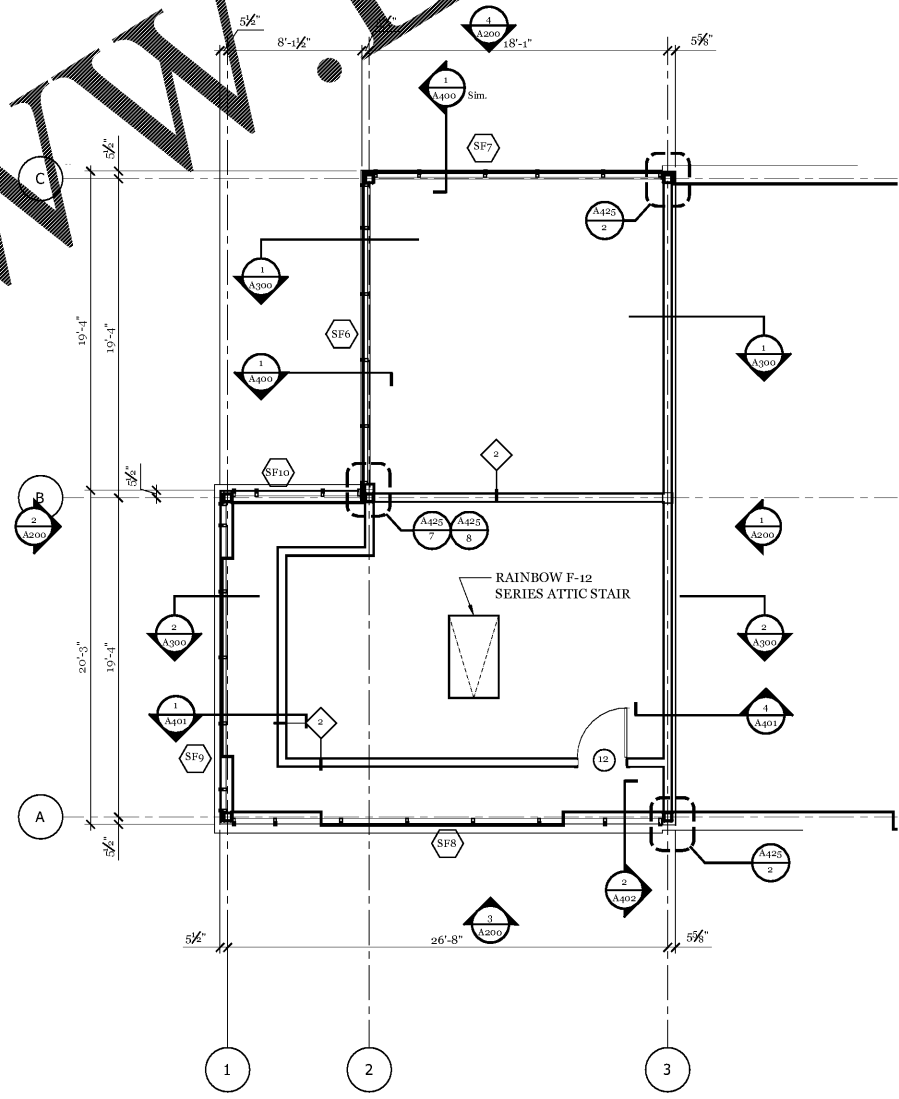
Drawn By TRB
Checked By MJR
Issue Date 06.15.17
Project No 170382


Sheet Title

TOWER PLAN

Sheet Number

A102



 Tower Plan
3/16" = 1'-0"

Order Plans @ WWW.LDILine.com

ALL RIGHTS RESERVED. NO PART OF THIS DOCUMENT IS TO BE REPRODUCED, STORED IN A RETRIEVAL SYSTEM, OR TRANSMITTED IN ANY FORM OR BY ANY MEANS, ELECTRONIC OR MECHANICAL, INCLUDING PHOTOCOPYING, RECORDING, OR BY ANY INFORMATION STORAGE AND RETRIEVAL SYSTEM. WITHOUT THE WRITTEN PERMISSION OF THE ARCHITECT.