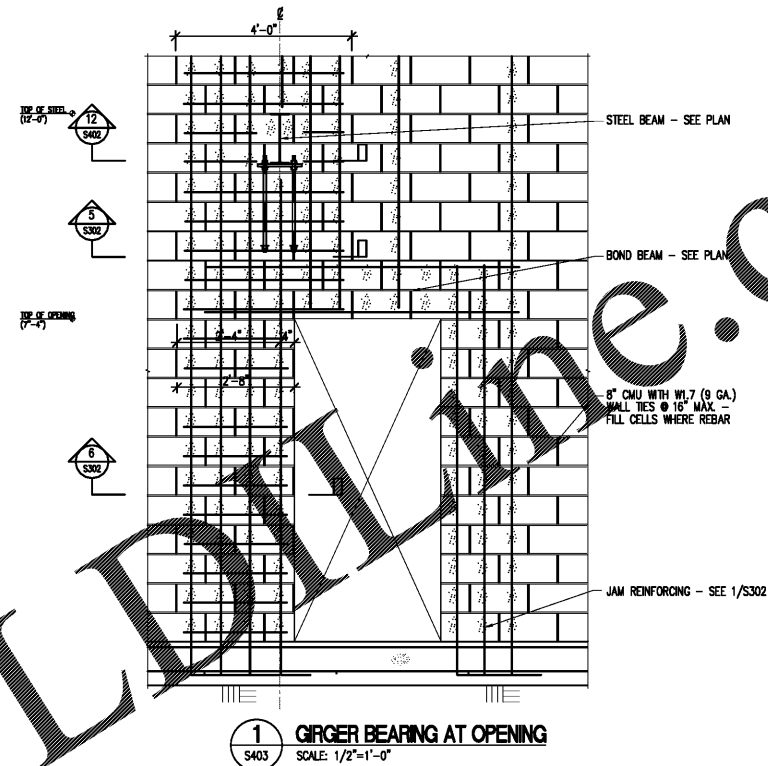


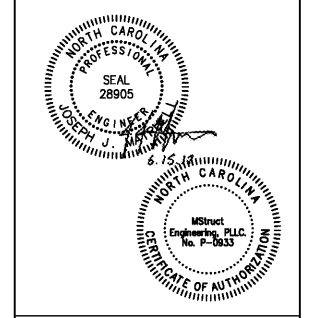
ALL STRUCTURAL ENGINEERING AND ARCHITECTURE IS THE PROPERTY OF MSTRUCTURAL ENGINEERING, P.A. ANY UNAUTHORIZED USE OR REPRODUCTION IS STRICTLY PROHIBITED. PERMISSION IS GRANTED TO MAKE COPIES OF THESE DRAWINGS FOR THE PROJECT ONLY.

Order Plans @ WWW.LDLINE.COM



Project
Sam's Xpress Car Wash
4965 University Parkway
Winston-Salem, NC 27106

Owner
Sam's M...
293 Couch Place
Suite 200
Matthews, NC 28105



R4
ARCHITECTURE, P.A.

124 Floyd Smith Dr
Suite 375
Charlotte, NC 28262
Tel - 704 - 688-7500

7301 Rivers Avenue
Suite 188
North Charleston, SC 29406
Tel - 843 - 531-6848

www.R4architecture.com

Revision	Date

Drawn By PJW
 Checked By JJM
 Issue Date 06.15.17
 Project No 170382

Sheet Title
FRAMING SECTIONS
AND DETAILS

Sheet Number
S403



MStruct
Structural Engineering Services, PLLC
Design • Inspection • Testing
1521 Nassau Blvd.
Charlotte, NC 28203
704.507.3099
www.mstruct.com
MStruct Job#: 65-17