

ALL GEOTECH ANALYSES AND FOUNDATION SCHEDULES ARE THE PROPERTY OF R4ARCHITECTURE, P.A. ANY UNAUTHORIZED USE OR REPRODUCTION IS STRICTLY PROHIBITED. PERMISSION IS GRANTED FOR THE CONSTRUCTION OF THESE FOUNDATIONS.

CONTRACTOR SHALL VERIFY ALL DIMENSIONS WITH MECHANICAL AND ARCHITECTURAL PRIOR TO CONSTRUCTION

NOTE: THE CONTRACTOR SHALL COORDINATE SLAB JOINTS WITH CONSTRUCTION SEQUENCING AND METHODS. SLAB JOINTS SHALL BE FINISHED SUCH THAT CONCRETE WORK DOES NOT SHOW THROUGH VCT OR OTHER FLOOR MATERIALS. SEE DETAIL 2 ON SHEET S3.1 FOR SLAB JOINT DETAILS.

NOTE: AT ANY REINTRANT CORNERS (PLUMBING BLOCK-OUTS, ETC.), PROVIDE 2-#4 BARS x 2'-0" LONG AT CENTER OF SLAB AT EACH CORNER.

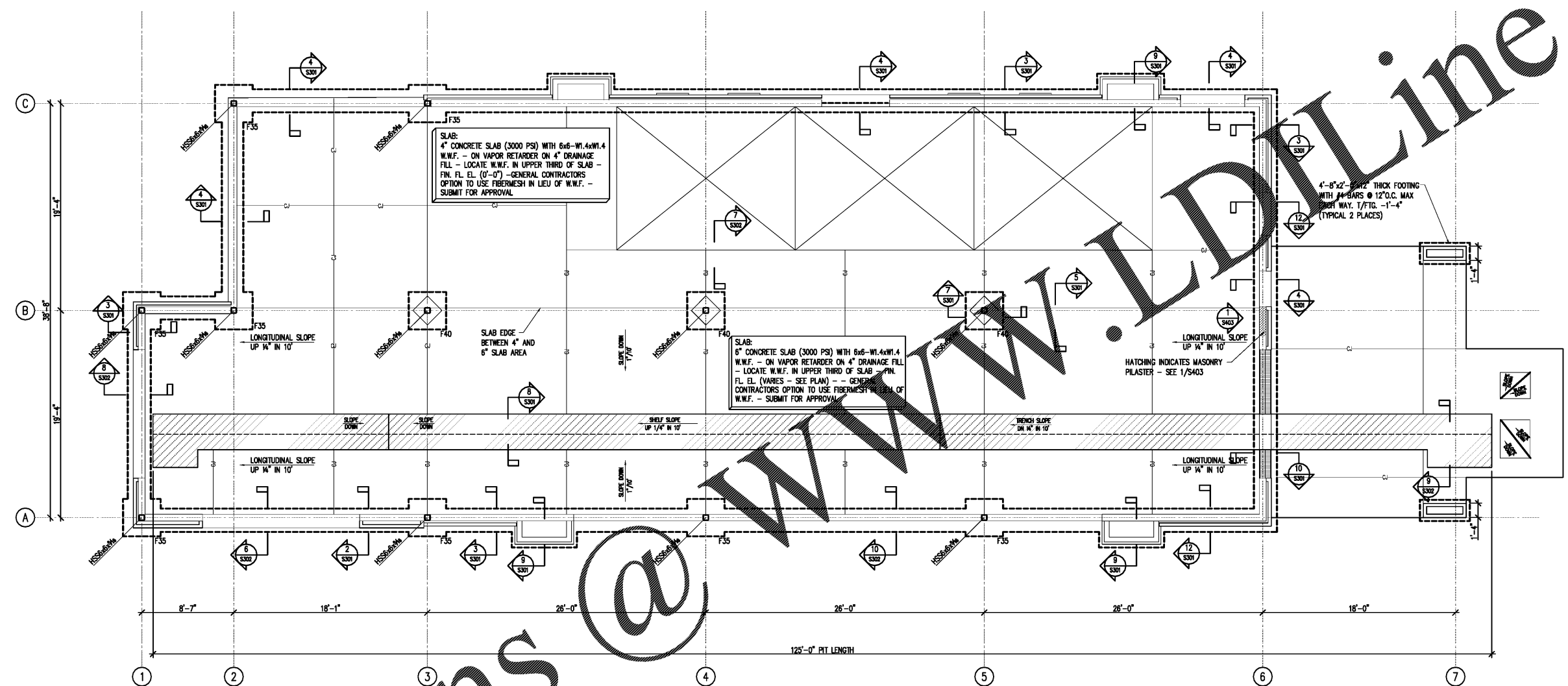
CORRELATOR PIT NOTES:
 1) STEEL FRAMES FOR CORRELATOR PITS TO BE PROVIDED BY BELANGER. THE GENERAL CONTRACTOR SHALL SET THE FRAMES IN THE SLAB POUR. THE GENERAL CONTRACTOR SHALL COORDINATE DELIVERY OF THE FRAMES WITH BELANGER IN TIME FOR SLAB POUR.
 2) SLOPE PITS FROM MINIMUM HIGH POINT OF 6" DEPTH BELOW SURROUNDING SLAB TO LOW POINT AT 8" DEPTH BELOW SURROUNDING SLAB.
 3) AT PIT BOTTOM LOW POINT, PROVIDE 4" PVC DRAIN INTO CONVEYOR TRENCH (NO ELBOWS, BENDS, OR FITTINGS).

CONDUIT OPENING:
 SEE 11/S301 FOR OPENING DETAIL. DO NOT LOCATE UNDER PILASTER OR MASONRY JAM.

CONTRACTOR SHALL COORDINATE ALL CONDUIT, PLUMBING, SLAB DEPRESSIONS, WASH EQUIPMENT, FLOOR FINISHES AND EMBEDS BEFORE POURING SLAB. ARCHITECTURAL, MECHANICAL, PLUMBING, ELECTRICAL, AND WASH EQUIPMENT DRAWINGS MUST BE REVIEWED FOR ADDITIONAL WORK TO BE EMBEDDED IN CONCRETE.

PROVIDE #5 @ 32" VERT. REINFORCING AND GROUT ALL CMU CELLS SOLID WITH #1.7 (9 GA.) LADDER TYPE HORIZONTAL JOINT REINFORCING @ 16" O.C. - TYPICAL ALL CMU WALLS U.N.O. - SEE SHEET S3.1

NOTE: TANKS MUST BE SET AND BACKFILLED WITH PROPER COMPACTION BEFORE CONSTRUCTION OF BUILDING FOOTINGS



1 FOUNDATION AND FLOOR SLAB PLAN
 S101 SCALE: 3/16" = 1'-0"

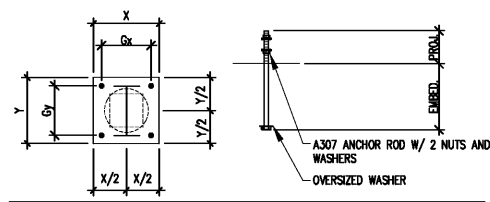
- NOTES:
 1. TOP OF EXTERIOR FOOTING (-1'-4")
 2. TOP OF INTERIOR FOOTING (-1'-0")
 3. SEE SHEET S-001 FOR GENERAL NOTES.

FOOTING SCHEDULE (2000 PSF)

MARK	SIZE	THICK.	REINFORCING
F35	3'-6"x3'-6"	1'-0"	4 #4 x 3'-0" EACH WAY
F40	4'-0"x4'-0"	1'-0"	6 #4 x 3'-6" EACH WAY

SOILS LABORATORY SHALL VERIFY SOIL BEARING PRESSURE AT BOTTOM OF EACH FOOTING PRIOR TO PLACING CONCRETE. STRUCTURAL FILL SUPPORTING SLAB OR FOOTINGS SHALL BE PLACED IN MAXIMUM 8" LIFTS, WITH EACH 8" LIFT TESTED BY LABORATORY FOR COMPACTION LISTED IN GENERAL NOTES.

2 FOOTING SCHEDULE
 S101 NOT TO SCALE



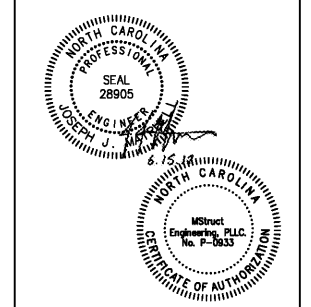
COLUMN	BASE PLATE		GAGE		ANCHOR ROD	
	THICK.	X	Y	Gx	Gy	DIA.
HSS6x6	3/4"	12"	12"	9"	9"	3/4"

2 COLUMN BASE PLATE SCHEDULE
 S101 NOT TO SCALE

SEE RECLAIM TANK NOTES ON SHEET S0.1

Project
 Sam's Xpress Car Wash
 4965 University Parkway
 Winston-Salem, NC 27106

Owner
 Sam's M...
 93 Church Place
 Suite 200
 Matthews, NC 28105



R4
 ARCHITECTURE, P.A.

124 Floyd Smith Dr
 Suite 375
 Charlotte, NC 28262
 Tel - 704 - 688-7500

7301 Rivers Avenue
 Suite 188
 North Charleston, SC 29406
 Tel - 843 - 531-6848

www.R4architecture.com

Revision Date

Drawn By PJW
 Checked By JJM
 Issue Date 06.15.17
 Project No 170382

Sheet Title
 FOUNDATION PLAN

Sheet Number
S101



Order Plans