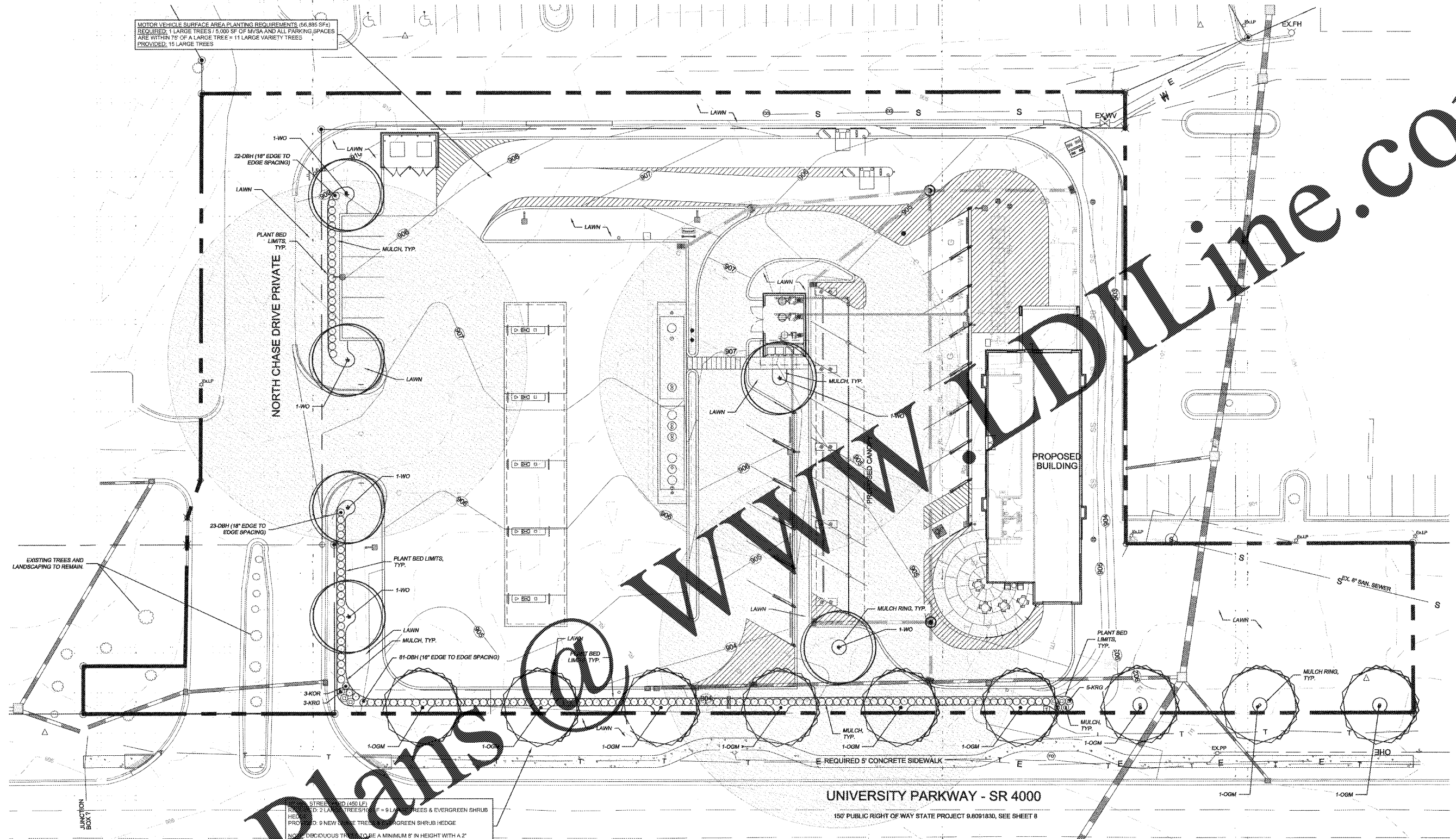


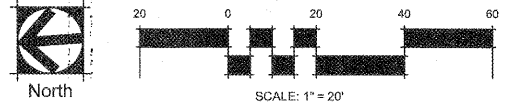
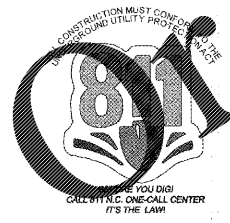
MOTOR VEHICLE SURFACE AREA PLANTING REQUIREMENTS (56,885 SF±)
 REQUIRED: 1 LARGE TREE/5,000 SF OF MVSA AND ALL PARKING SPACES
 ARE WITHIN 75' OF A LARGE TREE = 11 LARGE VARIETY TREES
 PROVIDED: 15 LARGE TREES



New Development		Additions to Existing Development	
Total Site Area (in square feet)	11,250 SF ±	Total Limits of Land Disturbance (in Square Feet)	0 SF ±
Total Site Area Excluded (in square feet)	0 SF ±	Total Excluded Area (in square feet)	0 SF ±
Total Square Footage of Individual Trees Used to Satisfy Minimum TSA	11,250 SF ±	Total Required Tree Save Area	10,948 SF ±
Total Square Footage of Individual Trees Used to Satisfy Minimum TSA	11,250 SF ±	Total TSA Provided (in square feet)	11,250 SF ±

PLANT LIST:

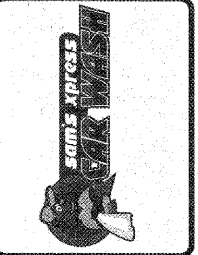
Trees									
CODE	COUNT	COMMON NAME	BOTANICAL NAME	CALIPER	HEIGHT	SPREAD	SPACING	COMMENTS	
OGM	9	'October Glory' Maple	Acer rubrum 'October Glory'	2.5-3"	12-14'			BB, Specimen	
WO	6	Willow Oak	Quercus phellos	2.5-3"	12-14'			BB, Specimen	
Shrubs									
CODE	COUNT	COMMON NAME	BOTANICAL NAME	CALIPER	HEIGHT	SPREAD	SPACING	COMMENTS	
DBH	137	Dwarf Burford Holly	Ilex cornuta 'Burfordii Nana'		16-24"	18-24"	See Plans	Container	
KOR	3	'Knock Out' Rose	Rosa 'Knockout'		18-24"	18-24"	3' o.c.	Container, Red Flowers	
RRG	8	'Karkley Rose' Fountain Grass	Pennisetum orientale 'Karkley Rose'		15-18"	12-15"	3' o.c.	Container	



stimmel
 ARCHITECTURE
 CIVIL ENGINEERING
 LAND PLANNING
 101 N. TSA STREET, SUITE 200
 WINSTON-SALEM, NC 27101
 P: 773.1077 F: 336.723.1069
 www.stimmelpa.com

STIMMEL ASSOCIATES, INC.
 CORPORATE SEAL
 C-68
 NORTH CAROLINA
 PROFESSIONAL LAND SURVEYOR
 1678
 6-28-11
 W. THOMAS

NO.	DATE	BY	REVISION



SAM'S XPRESS CAR WASH
 4965 University Parkway
 WINSTON-SALEM, NORTH CAROLINA
 SAM'S REAL ESTATE
 7935 COUNCIL PLACE, SUITE 102
 MATTHEWS, NC 28105

LANDSCAPE PLAN		DESIGNED BY	JAL	CHECKED BY	JAL
DATE	08/28/2017	DRAWN BY	JAL / JKG	JOB NUMBER	17-07D
SCALE	AS SHOWN	DATE	08/28/2017		

Sheet
C-5.0