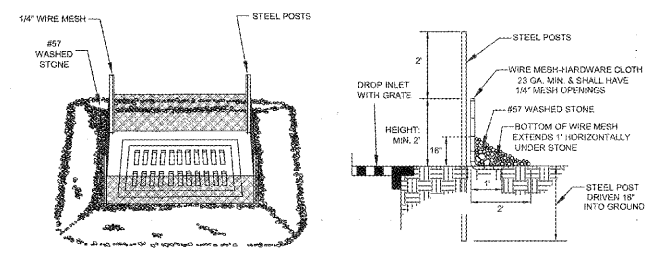
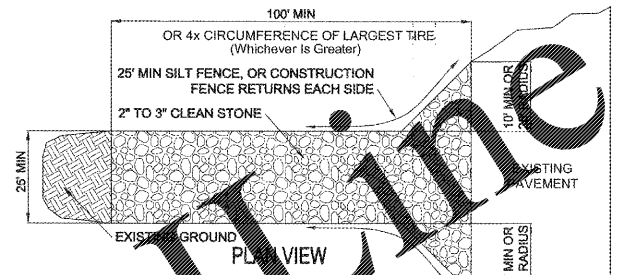
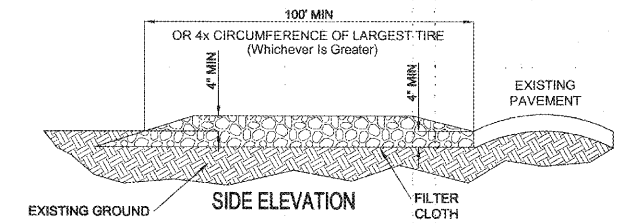


NOTE: SILT FENCE OUTLET LOCATIONS AS DEFINED ON THE PLANS ARE SCHEMATIC. SILT FENCE OUTLETS TO BE FIELD PLACED AT AREAS AT LOW POINTS THAT WILL RECEIVE THE MOST CONCENTRATED FLOW.

**STANDARD TEMPORARY SILT FENCE/
SILT FENCE OUTLET**



WIRE AND STONE INLET PROTECTION



CONSTRUCTION SPECIFICATIONS:

- * STONE: USE COARSE AGGREGATE (2-3 INCHES).
- * LENGTH: EFFECTIVE, BUT NOT LESS THAN 10 FEET.
- * THICKNESS: NOT LESS THAN 8 INCHES.
- * WIDTH: LESS THAN FULL WIDTH OF ALL POINTS OF INGRESS OR EGRESS.
- * WASHING: NECESSARY BARRIERS SHALL BE CLEANED TO REMOVE SEDIMENT PRIOR TO ENTRANCE TO PUBLIC RIGHT-OF-WAY. WASHING IS REQUIRED. IT SHALL BE DONE ON AN AREA SURFACE WITH CRUSHED STONE WHICH DRAINS INTO AN APPROVED SEDIMENT TRAP OR SEDIMENT BASIN. ALL SEDIMENT SHALL BE PREVENTED FROM ENTERING ANY STORM DRAIN, DITCH, OR WATERCOURSE THROUGH USE OF SAND BAGS, GRAVEL, BOARDS, OR OTHER APPROVED METHODS.
- * MAINTENANCE: THE ENTRANCE SHALL BE MAINTAINED IN A CONDITION WHICH WILL PREVENT TRACKING OR FLOWING OF SEDIMENT ONTO PUBLIC RIGHT-OF-WAY. THIS MAY REQUIRE PERIODIC TOP DRESSING WITH ADDITIONAL STONE AS CONDITIONS DEMAND AND REPAIR AND/OR CLEANOUT OF ANY MEASURES USED TO TRAP SEDIMENT. ALL SEDIMENT SPILLED, DROPPED, WASHED OR TRACKED ONTO PUBLIC RIGHTS-OF-WAY MUST BE REMOVED IMMEDIATELY.

CONSTRUCTION ENTRANCE

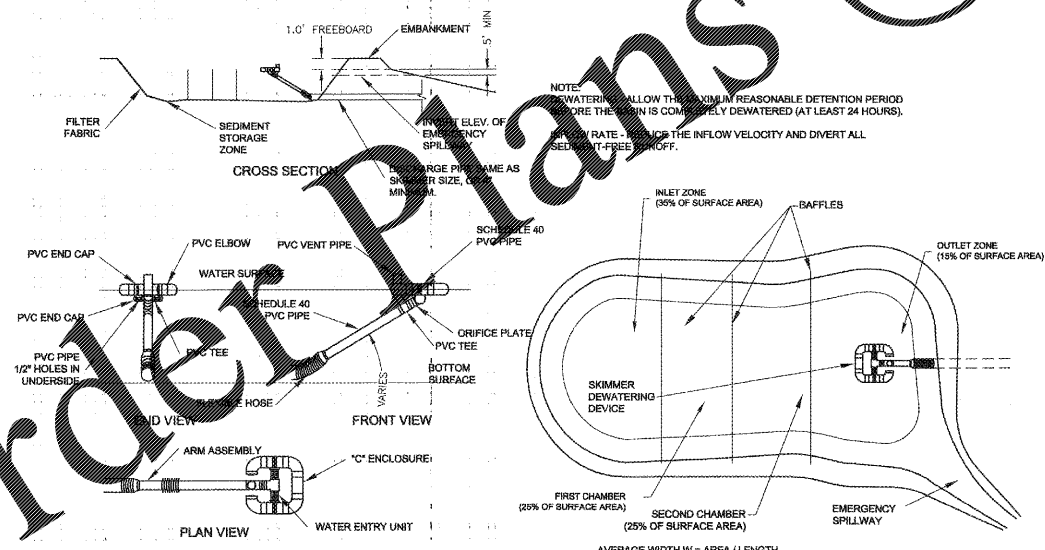
FOR LATE WINTER/EARLY SPRING:
SEEDING MIXTURE:
SPECIES: RYE (GRAIN) RATE (LB/ACRE): 120
ANNUAL LESPEDEZA 50
(KOBE IN PIEDMONT & COASTAL PLAIN, KOREAN IN MOUNTAINS)
SEEDING DATES:
MOUNTAINS-FEB. 1 - MAY 1
PIEDMONT-JAN. 1 - MAY 1
COASTAL PLAIN-DEC. 1 - APR. 15
SOIL AMENDMENTS:
FOLLOW RECOMMENDATIONS OF SOIL TESTS OR APPLY 2,000 LB/ACRE GROUND AGRICULTURAL LIMESTONE AND 750 LB/ACRE 10-10-10 FERTILIZER.
MULCH:
APPLY 4,000 LB/ACRE STRAW. ANCHOR STRAW BY TACKING WITH ASPHALT NETTING (APPLIED AT A RATE OF 350 GALLONS PER ACRE), OR A MULCH ANCHORING TOOL. A DISK WITH BLADES SET NEARLY STRAIGHT CAN BE USED AS A MULCH ANCHORING TOOL.

SOIL AMENDMENTS: FOLLOW RECOMMENDATIONS OF SOIL TESTS OR APPLY 2,000 LB/ACRE GROUND AGRICULTURAL LIMESTONE AND 750 LB/ACRE 10-10-10 FERTILIZER.
MAINTENANCE: REFERTILIZE IF GROWTH IS NOT FULLY ADEQUATE. RESEED, REFERTILIZE AND MULCH IMMEDIATELY FOLLOWING EROSION OR OTHER DAMAGE.
FOR SUMMER:
SEEDING MIXTURE:
SPECIES: GERMAN MILLET RATE (LB/ACRE): 40
IN THE PIEDMONT AND MOUNTAINS, A SMALL-STEMMED SUDANGRASS MAY BE SUBSTITUTED AT A RATE OF 50 LB/ACRE.
SEEDING DATES:
PIEDMONT-MAY 1 - AUG. 15
COASTAL PLAIN-APR. 15 - AUG. 15
MOUNTAINS-MAY 15 - AUG. 15
SOIL AMENDMENTS: FOLLOW RECOMMENDATIONS OF SOIL TESTS OR APPLY 2,000 LB/ACRE GROUND AGRICULTURAL LIMESTONE AND 750 LB/ACRE 10-10-10 FERTILIZER.

MULCH: APPLY 4,000 LB/ACRE STRAW. ANCHOR STRAW BY TACKING WITH ASPHALT NETTING (APPLIED AT A RATE OF 350 GALLONS PER ACRE), OR A MULCH ANCHORING TOOL. A DISK WITH BLADES SET NEARLY STRAIGHT CAN BE USED AS A MULCH ANCHORING TOOL.
MAINTENANCE: REFERTILIZE IF GROWTH IS NOT FULLY ADEQUATE. RESEED, REFERTILIZE AND MULCH IMMEDIATELY FOLLOWING EROSION OR OTHER DAMAGE.
FOR FALL:
SEEDING MIXTURE:
SPECIES: RYE (GRAIN) RATE (LB/ACRE): 120
SEEDING DATES:
MOUNTAINS-AUG. 15 - DEC. 15
PIEDMONT AND COASTAL PLAIN-AUG. 15 - DEC. 30
SOIL AMENDMENTS:
FOLLOW RECOMMENDATIONS OF SOIL TESTS OR APPLY 2,000 LB PER ACRE GROUND AGRICULTURAL LIMESTONE AND 1,000 LB PER ACRE 10-10-10

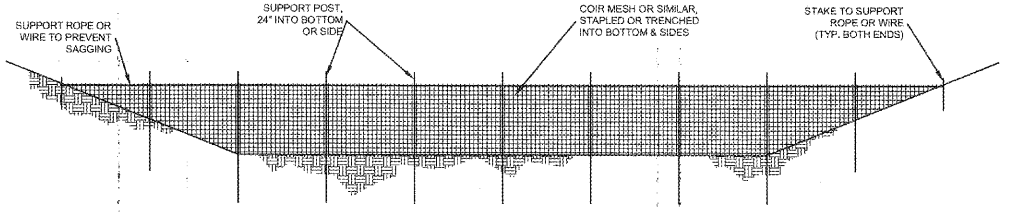
FERTILIZER
MULCH: APPLY 4,000 LB/ACRE STRAW. ANCHOR STRAW BY TACKING WITH ASPHALT NETTING (APPLIED AT A RATE OF 350 GALLONS PER ACRE), OR A MULCH ANCHORING TOOL. A DISK WITH BLADES SET NEARLY STRAIGHT CAN BE USED AS A MULCH ANCHORING TOOL.
MAINTENANCE: REPAIR AND REFERTILIZE DAMAGED AREAS IMMEDIATELY. TOPDRESS WITH 50 LB/ACRE OF NITROGEN IN MARCH. IF IT IS NECESSARY TO EXTEND TEMPORARY COVER BEYOND JUNE 15, OVERSEED WITH 50 LB/ACRE KOBE (PIEDMONT AND COASTAL PLAIN) OR KOREAN (MOUNTAINS) LESPEDEZA IN LATE FEBRUARY OR MARCH.
SEEDBED PREPARATION:
1. RIP AREA TO BE SEED TO A MINIMUM DEPTH OF 4-6 INCHES.
2. REMOVE ALL LOOSE ROCKS, ROOTS, ETC. LEAVING SMOOTH SURFACE AND UNIFORM.
3. APPLY SEED, AGRICULTURAL LIME, FERTILIZER AND SUPERPHOSPHATE UNIFORMLY AND MIX WITH THE SOIL.
4. SEED ON A FRESHLY PREPARED SEEDBED AND COVER THE SEED LIGHTLY WITH SEEDING EQUIPMENT OR CULTIPACK AFTER SEEDING.
5. MULCH IMMEDIATELY AFTER SEEDING AND ANCHOR MULCH.

TEMPORARY SEEDING SPECS



NOTE: THE COSTS OF USING A SKIMMER SYSTEM ARE SIMILAR, OR OCCASIONALLY LESS, THAN A CONVENTIONAL ROCK OUTLET OR PERFORATED RISER. HOWEVER, THE BASIN IS MORE EFFICIENT IN REMOVING SEDIMENT. ANOTHER ADVANTAGE OF THE SKIMMER IS THAT IT CAN BE REUSED ON FUTURE PROJECTS. THE MAIN DISADVANTAGE OF THE SKIMMER IS THAT IT DOES REQUIRE FREQUENT MAINTENANCE, PRIMARILY IN REMOVING DEBRIS FROM THE INLET.

A SKIMMER MUST DEWATER THE BASIN FROM THE TOP OF THE WATER SURFACE. THE RATE OF DEWATERING MUST BE CONTROLLED. A DEWATERING TIME OF 24 TO 72 HOURS IS REQUIRED. ANY SKIMMER DESIGN THAT DEWATERS FROM THE SURFACE AT A CONTROLLED RATE IS ACCEPTABLE.



NOTE:
INSPECT BAFFLES AT LEAST ONCE A WEEK AND AFTER EACH RAINFALL. MAKE ANY REQUIRED REPAIRS IMMEDIATELY.
BE SURE TO MAINTAIN ACCESS TO THE BAFFLES. SHOULD THE FABRIC OF A BAFFLE COLLAPSE, TEAR, DECOMPOSE OR BECOME INEFFECTIVE, REPLACE IT PROMPTLY.
REMOVE SEDIMENT DEPOSITS WHEN IT REACHES HALF FULL TO PROVIDE ADEQUATE STORAGE VOLUME FOR THE NEXT RAIN AND TO REDUCE PRESSURE ON THE BAFFLES. TAKE CARE TO AVOID DAMAGING THE BAFFLES DURING CLEANOUT. SEDIMENT DEPTH SHOULD NEVER EXCEED HALF THE DESIGNED STORAGE DEPTH.
AFTER THE CONTRIBUTING DRAINAGE AREA HAS BEEN PROPERLY STABILIZED, REMOVE ALL BAFFLE MATERIALS AND UNSTABLE SEDIMENT DEPOSITS, BRING THE AREA TO GRADE AND STABILIZE IT.

BAFFLE DETAIL

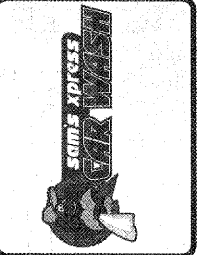
SKIMMER BASIN PLAN AND CROSS SECTION

Order Plans @ WWW.LINELINE.COM

stimmel
ARCHITECTURE
CIVIL ENGINEERING
LAND PLANNING
101 N. TRAIL STREET, SUITE 200
WINSTON-SALEM, NC 27101
86.733.1007 F: 336.723.1069
www.stimmelpa.com

SEAL
CORPORATE
C-88
NORTH CAROLINA
NORTH CAROLINA
NORTH CAROLINA
NORTH CAROLINA

NO.	DATE	BY	ISSUE



SAM'S XPRESS CAR WASH
4965 University Parkway
WINSTON-SALEM, NORTH CAROLINA
SAM'S REAL ESTATE
7955 COUNCIL PLACE, SUITE 102
MATTHEWS, NC 28105

EC DETAILS

DESIGNED BY	JAL	CHECKED BY	JAL
DRAWN BY	JAL / JKB	DATE	05/28/2017
SCALE	AS SHOWN	JOB NUMBER	17-070