

GRADING / EROSION CONTROL NOTES:

- 1. THE APPROXIMATE AREA OF THE LIMITS OF CLEARING, GRADING AND CONSTRUCTION (LIMITS OF DISTURBANCE) IS 2.28 ACRES.
2. THE CONTRACTOR SHALL VERIFY LOCATION AND ELEVATION OF ALL UNDERGROUND UTILITIES...
3. SUBJECT PROPERTY IS NOT LOCATED WITHIN A SPECIAL FLOOD HAZARD ZONE AREA AS DEFINED BY THE FEDERAL EMERGENCY MANAGEMENT AGENCY...
4. ALL GRADING AND BACKFILLING, EXCAVATING, ETC., SHALL BE IN ACCORDANCE WITH THE RECOMMENDATIONS SET FORTH IN THE GEOTECHNICAL INVESTIGATION REPORTS...
5. THE EROSION CONTROL MEASURES ARE TO BE IN PLACE PRIOR TO ANY EARTHWORK.
6. ALL EROSION CONTROL MEASURES SHALL BE MAINTAINED UNTIL DISTURBED AREAS ARE STABILIZED.
7. ALL EROSION CONTROL FACILITIES SHALL BE INSPECTED AND REPAIRED AT A MINIMUM OF WEEKLY BASIS AND AFTER EVERY RAIN EVENT.
8. ALL PAVED AREAS SHALL BE KEPT CLEAR OF EARTH MATERIALS AND DEBRIS...
9. ALL CONSTRUCTION TRAFFIC SHALL ENTER AND EXIT THE SITE VIA THE CONSTRUCTION ENTRANCES.
10. STABILIZATION MEASURES SHALL BE INITIATED AS SOON AS PRACTICABLE IN PORTIONS OF THE SITE WHERE CONSTRUCTION ACTIVITIES HAVE TEMPORARILY OR PERMANENTLY CEASED...
11. ALL ELEVATIONS SHOWN ARE IN REFERENCE TO THE BENCHMARK AND MUST BE VERIFIED BY THE GENERAL CONTRACTOR AT GROUND/BREAK.
12. PRIOR TO CONSTRUCTION, G.C. TO VERIFY THAT ALL ENCROACHMENT BUILDING, GRADING, UTILITY AND EROSION CONTROL PERMITS ARE ON FILE WITH ALL APPROPRIATE AGENCIES AND PERMITS ARE AVAILABLE ON-SITE.
13. G.C. TO VERIFY PROPER COVER OVER ALL EXISTING UTILITIES WITH PROPOSED GRADES. PROVIDE SLEEVING FOR ANY UTILITIES IN PAVED AREAS.
14. ALL CONSTRUCTION SHALL BE IN ACCORDANCE WITH LOCAL JURISDICTION STANDARD SPECIFICATIONS AND STANDARD DETAILS AND NO EROSION AND SEDIMENT CONTROL PLANNING AND DESIGN MANUAL CONFLICTS BETWEEN THESE PLANS AND STANDARDS NOTED ABOVE WILL BE RESOLVED BY APPLYING THE MOST STRINGENT REQUIREMENT AS DETERMINED BY THE ENGINEER.
15. ALL BORROW WILL COME FROM A SITE OR SPOIL WILL BE PLACED ON A SITE PERMITTED BY THE STATE OR LOCAL JURISDICTION. BORROW FROM OR SPOIL TO AN UNPERMITTED SITE BECOMES THE RESPONSIBILITY OF THE CONTRACTOR...
16. ALL STOCKPILE AREAS ARE INTENDED TO DRAIN TO AN APPROVED SEDIMENT TRAPPING DEVICE AND BE WITHIN THE LIMITS OF THE DISTURBED AREAS SHOWN.
17. G.C. RESPONSIBLE FOR ALL EROSION CONTROL PRACTICES REQUIRED TO MINIMIZE EFFECTS ON ADJACENT PROPERTIES DURING CONSTRUCTION.
18. ALL DISTURBED AREAS NOT OTHERWISE Delineated FOR BUILDING, PAVING, SOD, OR RW-RAP SHALL BE PERMANENTLY SEEDED IN ACCORDANCE WITH SPECS.
19. THE DISPOSAL OF DEBRIS IS NOT ALLOWED ON-SITE.
20. ALL AREAS TO RECEIVE PAVEMENT SHALL BE GRAVELLED IMMEDIATELY UPON COMPLETION OF GRADING.
21. GROSS SLOPES ON ALL WALKS SHALL NOT EXCEED 1:8% (UNLESS OTHERWISE NOTED) AND G.C. TO INSURE NO PONDS IS TO OCCUR ON ANY PAVED SURFACE.
22. ALL AREAS WITH 2:1 SLOPES OR ERODIBLE SLOPES SHALL BE COVERED WITH EXCELSDOR MATTING OR APPROVED EQUIV. INSTALL PER MANUFACTURERS SPECS.

EROSION CONTROL SEQUENCE:

- GENERAL CONTRACTOR TO INSTALL ALL TEMPORARY OR PERMANENT EROSION AND SEDIMENT CONTROL DEVICES AND MEASURES AS CALLED FOR AND AS NEEDED IN ADVANCE OF EROSION CONTROL PROBLEMS. G.C. RESPONSIBLE FOR NOT ALLOWING SEDIMENT TO LEAVE THE SITE.
GENERAL CONTRACTOR TO:
1. OBTAIN GRADING PERMIT FROM WINSTON-SALEM IF APPLICABLE.
2. CLEAR ONLY ENOUGH TO INSTALL STONE CONSTRUCTION ENTRANCE, SILT FENCE, SILT FENCE OUTLETS, INLET PROTECTION OVER EXISTING INLETS, AND SKIMMER BASIN.
3. CALL EROSION CONTROL INSPECTOR TO SITE TO INSPECT CONTROLS FOR RELEASE OF BUILDING PERMIT.
4. BEGIN CLEARING AND DEMOLITION OF REMAINDER OF SITE.
5. INSTALL DRAINAGE STRUCTURES, STORM PIPE AND INLET PROTECTION.
6. BEGIN ROUGH GRADING WHILE MAINTAINING EROSION CONTROL DEVICES IN ACCORDANCE WITH MAINTENANCE PLAN AND THE N.C. EROSION AND SEDIMENT CONTROL PLANNING AND DESIGN MANUAL.
7. BEGIN BUILDING CONSTRUCTION.
8. FINE GRADE, INSTALL CURBS AND GUTTER AND THEN STONE PARKING LOT.
9. SEED AND MULCH ALL DISTURBED AREAS. SILT FENCE OUTLETS CAN BE REMOVED ONCE PARKING AREAS AND BUILDING PAD HAVE BEEN STABILIZED WITH STONE AND SEEDING/MULCHING.

- INSPECT AND REPAIR ALL EROSION AND SEDIMENT CONTROL DEVICES ON A WEEKLY BASIS AND REPAIR AND REPAIR IMMEDIATELY AFTER RAINFALL. REPAIR/REPLACE ALL DETERIORATED MATERIALS.
PROVIDE GROUND COVER ON EXPOSED SLOPES WITHIN 14 CALENDAR DAYS FOLLOWING COMPLETION OF ANY PHASE OF GRADING TO COMPLY WITH NPDES GENERAL PERMIT FOR CONSTRUCTION ACTIVITIES (5201000) DETERMINING STABILIZATION REQUIREMENTS.
G.C. TO MAINTAIN SLOPES PRIOR TO ANY NEW PAVING. TYP REMOVE TEMPORARY EROSION AND SEDIMENT CONTROL DEVICES ONCE AREAS DRAINAGE STRUCTURES ARE STABILIZED.
THE PROPERTY OWNER IS RESPONSIBLE FOR MAINTENANCE OF PERMANENT EROSION AND SEDIMENT CONTROL DEVICES AFTER SITE DEVELOPMENT.
THE PROPERTY OWNER IS RESPONSIBLE FOR MAINTENANCE OF PERMANENT GROUND COVER AFTER SITE DEVELOPMENT.
RESPONSIBLE FOR STABILIZATION OF ALL EXPOSED GRADES WITHIN 14 CALENDAR DAYS.

EROSION CONTROL MAINTENANCE PLAN:

- 1. INSPECT ALL SEDIMENTATION AND EROSION CONTROL DEVICES FOR STABILITY AND FUNCTION EACH WEEK AND FOLLOWING EACH RAINFALL EVENT.
2. REMOVE ALL SILT/SEDIMENT FROM TEMPORARY TRAPS WHEN ACCUMULATED VOLUME HAS REACHED 50% OF CAPACITY.
3. REMOVE ACCUMULATED SILT/SEDIMENT FROM BEHIND TEMPORARY SEDIMENT FENCE WHEN DEPTH EXCEEDS APPROXIMATELY 6" REPAIR AND REPAIR AS NEEDED. SILT FENCE AS NECESSARY.
4. SEED AND STABILIZE TEMPORARY DIVERSION BERMS IMMEDIATELY AFTER CONSTRUCTION INCLUDING "CLEAN" WATER DIVERSION BERMS. RE-GRADE/REPAIR BERMS AS REQUIRED.
5. CONTRACTOR SHALL APPROPRIATE ORNATE INSPECTOR AND MAINTAIN RECORDS OF INSPECTIONS IN ACCORDANCE WITH THE PROVISIONS OF THE GENERAL NPDES STORMWATER DISCHARGE PERMIT, IF REQUIRED, FOR CONSTRUCTION ACTIVITIES.
6. ALL SEDIMENT AND EROSION CONTROL DEVICES SHALL BE INSPECTED EVERY SEVEN (7) DAYS AND WITHIN 24 HOURS AFTER EACH RAINFALL OCCURRENCE THAT EXCEEDS ONE-HALF (0.5) INCH. IF SITE INSPECTIONS IDENTIFY BMPs THAT ARE DAMAGED OR NOT OPERATING EFFECTIVELY, MAINTENANCE MUST BE PERFORMED AS SOON AS PRACTICABLE OR AS REASONABLY POSSIBLE AND BEFORE THE NEXT STORM EVENT WHENEVER PRACTICABLE.

SOD PREPARATION:

- 1. REMOVE UNDESIRABLE GROUND COVERS INCLUDING ANY TEMP. SEEDING.
2. RIP THE AREA TO BE SOODED TO A MINIMUM DEPTH OF 4".
3. REMOVE ALL LOOSE ROCKS, ROOTS, ETC. LEAVING SURFACE SMOOTH AND UNIFORM.
4. PREPARE SOD BASE PER A.A. STANDARDS.
5. APPLY SOD & IMMEDIATELY STAKE/FLAG OFF ALL NEW LAWN AREAS FROM PEDESTRIAN AND VEHICLES FOR THREE (3) WEEKS.
6. IRRIGATE SOODED AREAS FOR THE THREE WEEK PERIOD.

PERMANENT SOD:

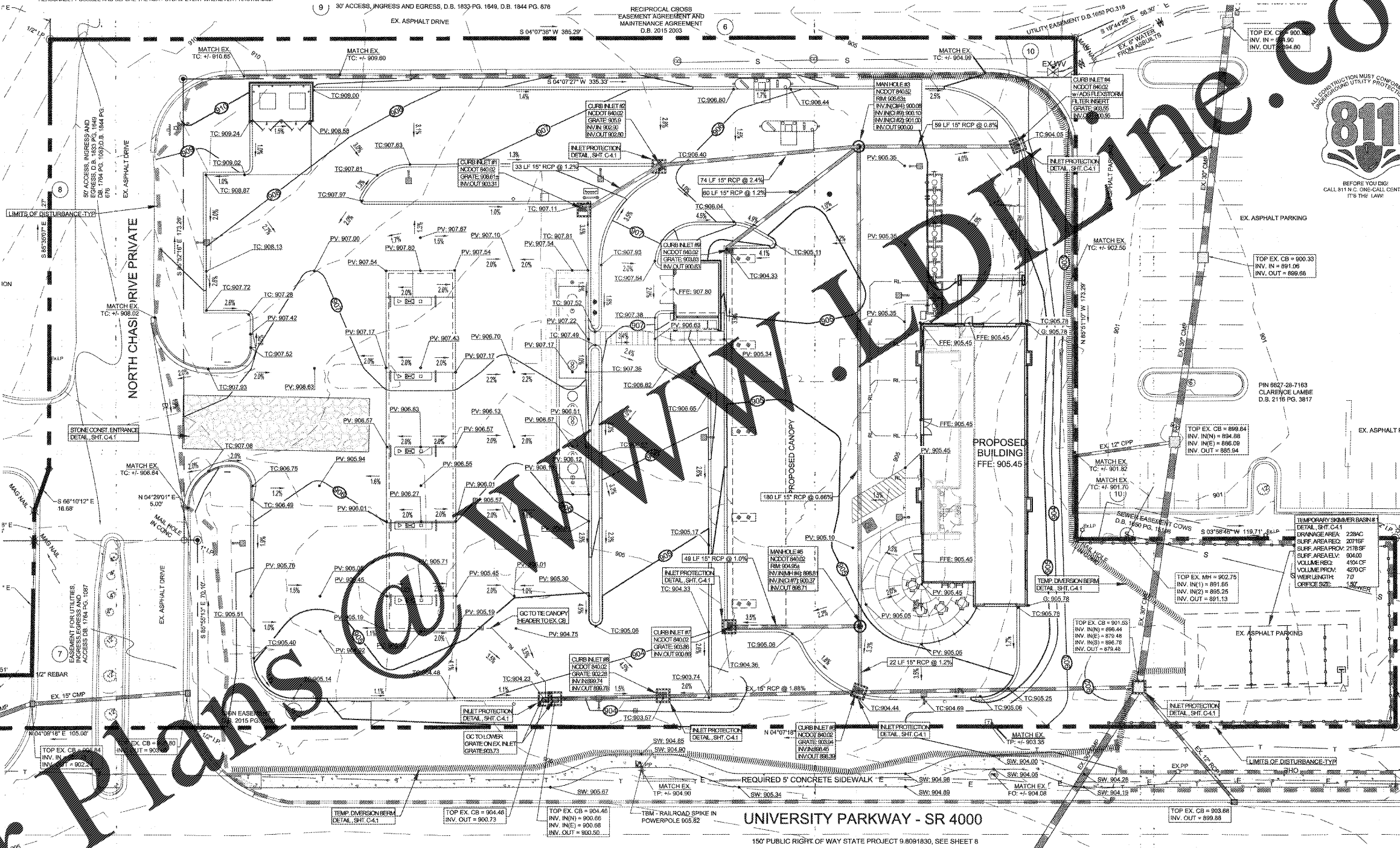
ALL UNPAVED DISTURBED AREAS (OR LAWN) TO BE RE-ESTABLISHED OUTSIDE PLANTING BEDS TO BE SOODED WITH AN EVEN MIXTURE OF PENNYCUIP 31, OR APPROVED EQUAL, FOR REGION, SO AS TO PRODUCE A THICK, FIRM STAND OF GRASS. DO NOT FERTILIZE SOODED AREAS. ALL AREAS TO BE SOODED TO HAVE APPROPRIATE SOIL PREPARATION. SEE SPECIFICATIONS SOD SHALL BE OF GOOD & HEALTHY COLOR WHEN DELIVERED. SOD SHALL BE HARVESTED & DELIVERED WITH A PERIOD OF 36 HOURS OR PRECAUTIONS MUST BE TAKEN TO PREVENT SOD FROM DRYING OUT WHILE IN TRANSIT.

SELF INSPECTION REQUIREMENTS:

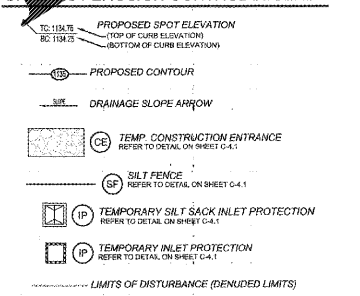
THIS PROJECT IS SUBJECT TO THE REQUIREMENTS OUTLINED IN NORTH CAROLINA GENERAL STATUTE 113A-54.1E) AND BY THE NC ADMINISTRATIVE CODE 15A NCAC 04B 0131. SELF-INSPECTIONS.
THE SELF-INSPECTION PROGRAM IS SEPARATE FROM THE WEEKLY SELF-MONITORING PROGRAM OF THE NPDES STORMWATER PERMIT FOR CONSTRUCTION ACTIVITIES. THE PURPOSE OF THE SELF-INSPECTION REPORT IS THE INSTALLATION AND MAINTENANCE OF EROSION AND SEDIMENTATION CONTROL MEASURES ACCORDING TO THE APPROVED PLAN. THE INSPECTIONS SHOULD BE CONDUCTED AFTER EACH PHASE OF THE PROJECT AND CONTINUED UNTIL PERMANENT GROUND COVER IS ESTABLISHED.

- 1. INSTALLATION OF PERMETER EROSION AND SEDIMENT CONTROL MEASURES.
2. CLEARING AND GRUBBING OF EXISTING GROUND COVER.
3. COMPLETION OF ANY PHASE OF ANY PHASE OF GRADING OF SLOPES OR FILLS.
4. INSTALLATION OF STORM DRAINAGE FACILITIES.
5. COMPLETION OF CONSTRUCTION OR DEVELOPMENT.
6. ESTABLISHMENT OF PERMANENT GROUND COVER SUFFICIENT TO RESTRAIN EROSION.

THE INSPECTION SHALL VERIFY THAT ALL OF THE INSTALLED EROSION AND SEDIMENTATION CONTROL MEASURES PRACTICES AND DEVICES ARE CONSISTENT WITH THE APPROVED EROSION AND SEDIMENTATION CONTROL PLAN AND ALL PREVIOUSLY CONSTRUCTED EROSION CONTROL MEASURES HAVE BEEN MAINTAINED IN ACCORDANCE WITH THE MAINTENANCE SCHEDULE.
IF ANY SIGNIFICANT DEVIATIONS FROM THE APPROVED EROSION AND SEDIMENTATION CONTROL PLAN ARE FOUND, THEN THE CONTRACTOR SHALL TAKE THE NECESSARY CORRECTIVE ACTIONS TO CORRECT THE DEVIATIONS. A SIGNIFICANT DEVIATION MEANS AN OMISSION, ALTERATION OR RELOCATION OF AN EROSION OR SEDIMENTATION CONTROL MEASURE THAT PREVENTS THE MEASURE FROM PERFORMING AS INTENDED.



GRADING / EROSION CONTROL LEGEND:



NPDES GENERAL PERMIT NOTES:

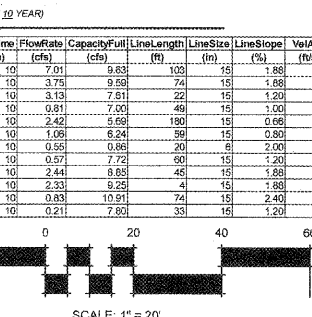
EFFECTIVE AUGUST 3, 2011 NCDWM ISSUED A NEW NPDES GENERAL PERMIT FOR CONSTRUCTION ACTIVITIES (52010000). ALL CONSTRUCTION MUST COMPLY TO THESE RULES OR IT WILL BE IN VIOLATION OF THE CURRENT RULES AND NOT ALLOWED TO DISCHARGE STORMWATER FROM THE SITE.
PROVISIONS WITHIN NCDWM010000 INCLUDE, BUT ARE NOT LIMITED TO:
GROUND STABILIZATION:
- PERIMETER DIKES, SWALES, DITCHES, SLOPES 3:1 OR STEEPER, AND HIGH QUALITY WATER ZONES MUST BE STABILIZED IN SEVEN (7) DAYS.
- SLOPES 3:1 OR FLATTER MUST BE STABILIZED IN FOURTEEN (14) DAYS.
- EXTENSIONS OF TIME MAY BE APPROVED BY APPROVING AUTHORITY BASED ON WEATHER OR OTHER SITE SPECIFIC CONDITIONS THAT MAKE COMPLIANCE IMPRACTICAL.

BUILDING WASTES HANDLING
- NO PAINT OR LIQUID WASTES IN STREAM OR STORM DRAINS.
- DEDICATED AREAS FOR DEMOLITION, CONSTRUCTION, AND OTHER WASTES MUST BE LOCATED 50' FROM STORM DRAINS AND STREAMS UNLESS NO REASONABLE ALTERNATIVES AVAILABLE.
- EARTHEN MATERIALS STOCKPILES MUST BE LOCATED 50' FROM STORM DRAINS AND STREAMS UNLESS NO REASONABLE ALTERNATIVES AVAILABLE.
- CONCRETE MATERIALS MUST BE CONTROLLED TO AVOID CONTACT WITH SURFACE WATERS, WETLANDS, OR BUFFERS.
SEDIMENT BASINS
- SEDIMENT BASINS OF 1 ACRE OR MORE DRAINAGE AREA MUST DE-WATER FROM THE WATER SURFACE.
- USE OF FLOCCULANTS ARE PERMITTED IF ON DWQ-APPROVED LIST.

INSPECTIONS
- CONTRACTOR OR REPRESENTATIVE SHALL FOLLOW THE WEEKLY SELF-INSPECTION GUIDELINES.
- THE CONTRACTOR OR REPRESENTATIVE SHALL ALSO RECORD DAILY RAIN GAUGE AMOUNTS AND KEEP RECORD AVAILABLE FOR NCDWM INSPECTOR UPON REQUEST AND INSPECT SITE AFTER DAILY RAINFALL OF 0.5" OR GREATER FOR EROSION CONTROL MEASURES THAT NEED IMMEDIATE ATTENTION.
- INSPECTIONS ONLY REQUIRED DURING NORMAL BUSINESS HOURS.
- INSPECTION REPORTS MUST BE AVAILABLE UPON REQUEST UNLESS SITE SPECIFIC EXEMPTION IS APPROVED BY NCDWM INSPECTOR.
- RECORDS MUST BE KEPT FOR THREE YEARS AND AVAILABLE UPON REQUEST.
- ELECTRONICALLY AVAILABLE RECORDS MAY BE SUBSTITUTED UPON REQUEST.

STORM DRAINAGE DESIGN DATA: (STORM FREQUENCY 10 YEAR)

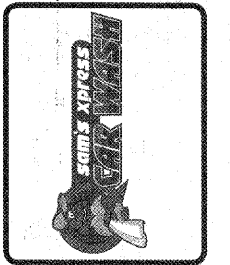
Table with columns: InletID, LineID, RunoffCoeff (C), Inlet (Inch), DrainageArea (ac), TotalArea (ac), InletTime (min), FlowRate (cfs), CapacityFull (cfs), LineLength (ft), LineSize (in), LineSlope (%), VelAve (ft/s). Rows include CB86 to CB87.



stimmel CIVIL ENGINEERING ARCHITECTURE LANDSCAPE ARCHITECTURE 6011 LANTANA STREET, SUITE 200 WINSTON-SALEM, NC 27101 336.723.1067 F.336.723.1069 stimmelpa.com

Professional Engineer Seal for Timothy J. Jennings, State of North Carolina, License No. 10000.

Table with columns: NO., DATE, BY, ESTAB.



SAM'S XPRESS CAR WASH 4965 University Parkway WINSTON-SALEM, NORTH CAROLINA SAM'S REAL ESTATE 7935 COUNCIL PLACE, SUITE 102 MATTHEWS, NC 28105

GRADING / EROSION CONTROL PLAN sheet information: DESIGNED BY JAL, CHECKED BY JAL, DATE 06/29/2017, SCALE AS SHOWN, SHEET C-4.0.