

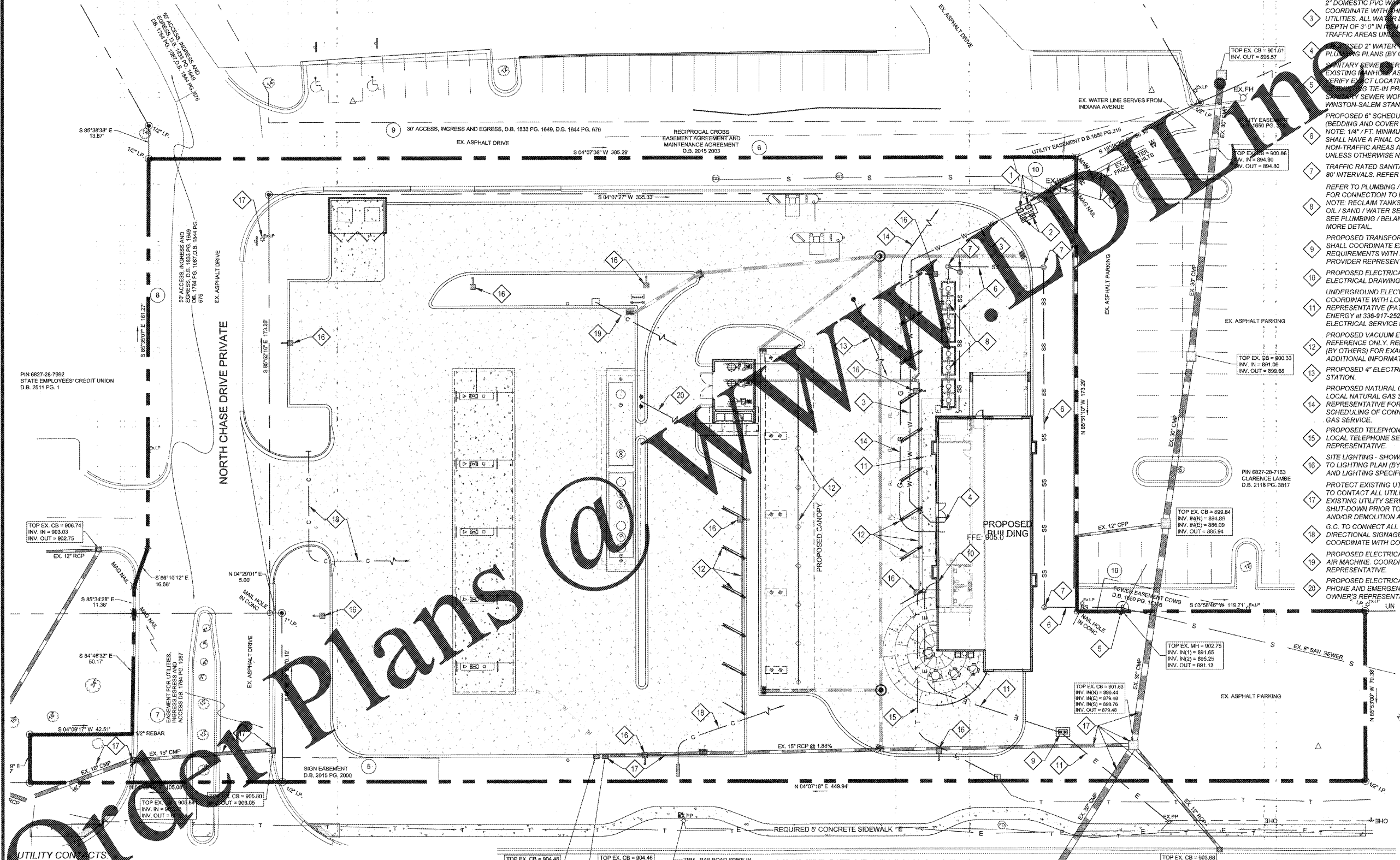
SITE UTILITY NOTES:

- 1) THE CONTRACTOR SHALL VERIFY LOCATION AND ELEVATION OF ALL UNDERGROUND UTILITIES. THE LOCATION OF ALL EXISTING UTILITIES ARE NOT NECESSARILY SHOWN ON THE PLANS AND WHERE SHOWN ARE ONLY APPROXIMATE. THE CONTRACTOR SHALL ON HIS INITIATIVE AND AT NO EXTRA COSTS HAVE LOCATED ALL UNDERGROUND LINES AND STRUCTURES AS NECESSARY. NO CLAIMS FOR DAMAGES OR EXTRA COMPENSATION SHALL ACCRUE TO THE OWNER FROM THE PRESENCE OF SUCH PIPE, OTHER OBSTRUCTIONS OR FROM ANY DELAY DUE TO REMOVAL OR REARRANGEMENT OF THE SAME. THE CONTRACTOR SHALL BE RESPONSIBLE FOR ANY DAMAGE TO UNDERGROUND STRUCTURES. THE CONTRACTOR IS RESPONSIBLE FOR CONTACTING ALL NON-SUBSCRIBING UTILITIES. THE CONTRACTOR(S) SHALL CONTACT NORTH CAROLINA ONE-CALL UTILITY LOCATION SERVICE AT 1-800-632-4949 FOR ASSISTANCE IN LOCATING EXISTING UTILITIES. CALL AT LEAST 3 DAYS PRIOR TO ANY DIGGING.
- 2) UTILITY INFORMATION SHOWN HEREON WAS OBTAINED FROM THE SURVEYOR LISTED BELOW AND MAY OR MAY NOT BE EITHER ACCURATE OR COMPLETE, AND HAS NOT BEEN VERIFIED BY THE ENGINEER. THE GENERAL CONTRACTOR IS RESPONSIBLE FOR VERIFYING EXACT LOCATIONS OF EXISTING UTILITIES AND IS RESPONSIBLE FOR ANY DAMAGE TO ANY UTILITIES, EITHER PUBLIC OR PRIVATE, SHOWN HEREON OR NOT SHOWN HEREON. ANY REPAIRS SHALL BE DONE TO THE SATISFACTION OF THE APPROPRIATE UTILITY COMPANY.
- 3) THE GENERAL CONTRACTOR SHALL CONFIRM ALL NEW UTILITY TAP LOCATIONS WITH THE UTILITY OWNERS.
- 4) IT IS THE RESPONSIBILITY OF THE GENERAL CONTRACTOR TO VERIFY THE ACTUAL LOCATION AND AVAILABILITY OF ALL EXISTING AND PROPOSED UTILITIES IN THE FIELD PRIOR TO GROUND BREAKING.
- 5) MINIMUM COVER FOR CONDUITS SHALL BE 36 INCHES UNLESS OTHERWISE SHOWN OR NOTED ON THESE PLANS.
- 6) ALL MANHOLES, VALVES AND MONUMENT FRAMES SHALL BE SET TO FINISH GRADE AFTER PAVING.
- 7) THE CONTRACTOR SHALL COMPLY WITH THE RULES AND REGULATIONS OF THE STATE CONSTRUCTION SAFETY ORDERS. TRENCHES SHALL BE SHORED IN ACCORDANCE WITH OSHA.
- 8) EQUIPMENT AND PRODUCTS OTHER THAN THOSE SPECIFIED MAY BE USED PROVIDED PRIOR APPROVAL HAS BEEN OBTAINED FROM THE OWNER IN WRITING PRIOR TO ORDERING OR INSTALLATION. THE CONTRACTOR SHALL WAIVE ANY CLAIM FOR ADDITIONAL COST RELATED TO THE SUBSTITUTION OF ALTERNATE EQUIPMENT.
- 9) CONTRACTOR SHALL MAINTAIN AN "AS-BUILT" SET OF DRAWINGS TO RECORD THE EXACT LOCATION OF ALL PIPING PRIOR TO CONCEALMENT. DRAWINGS SHALL BE GIVEN TO THE OWNER UPON COMPLETION OF THE PROJECT WITH A COPY OF THE TRANSMITTAL LETTER TO THE ENGINEER.
- 10) ALL UTILITY CONSTRUCTION SHALL BE IN ACCORDANCE WITH LOCAL MUNICIPALITY UTILITIES DIVISION AND CROSS CONNECTION CONTROL REGULATIONS AND STANDARDS.
- 11) SITE UTILITY CONTRACTOR TO PROVIDE WATER, SANITARY SEWER, AND ROOF DRAIN LEADERS TO WITHIN 5 FEET OF THE BUILDING. CONTRACTOR SHALL COORDINATE SITE PLAN CONNECTIONS WITH THE ARCHITECTURAL BUILDING PLANS.

- 12) UNDERGROUND CONDUITS TO SIGNS, LOT LIGHTS, ETC., SHALL BE PLACED IN GRASS OR LANDSCAPE AREAS WHENEVER POSSIBLE. THE LOCATION OF THE CONDUIT AS SHOWN ON THESE PLANS SHALL BE CONSIDERED TO BE SCHEMATIC WITH ACTUAL LOCATION TO BE VERIFIED BY THE GENERAL CONTRACTOR. PVC SHC 40 SLEEVES SHALL BE INSTALLED FOR ALL CONDUIT CROSSING UNDER PAVED AREAS.
- 13) THE CONTRACTOR SHALL COORDINATE WITH THE APPROPRIATE UTILITY COMPANIES TO DETERMINE EXACT POINT OF SERVICE CONNECTION AT EXISTING UTILITY. REFER TO THE BUILDING ELECTRICAL AND PLUMBING DRAWINGS FOR UTILITY SERVICE ENTRANCE LOCATIONS, SIZES AND CIRCUITING.
- 14) THE CONTRACTOR PRIOR TO POURING THE BUILDING SLAB AND FOUNDATION, SHALL VERIFY THE ACCESSIBILITY OF THE SANITARY SEWER SERVICE AND OBTAIN CONFIRMATION FROM THE DESIGN ENGINEER REGARDING SANITARY SEWER SERVICE FUNCTIONALITY. G.C. TO CONFIRM SANITARY SEWER INVERT LEAVING BUILDING WILL WORK WITH INVERT ELEVATION SHOWN UPSTREAM OF GREASE TRAP.

SITE UTILITY KEYNOTES:

- 1 2" DOMESTIC WATER CONNECTION TAP OF THE EXISTING SERVICE STUB AND SET 2" DOMESTIC WATER METER AND 2" DOUBLE CHECK ASSEMBLY / BACKFLOW DEVICE AS REQUIRED PER THE CITY OF WINSTON-SALEM STANDARDS. G.C. TO COORDINATE WITH THE CITY OF WINSTON-SALEM UTILITIES (Tel.# 336-747-6853) FOR INSTALLATION OF DOMESTIC WATER SERVICE AND TO VERIFY TYPE OF BACKFLOW DEVICE REQUIRED.
- 2 1" IRRIGATION TAP ON 2" SERVICE AND SET 1" IRRIGATION WATER METER AND 1" DOUBLE CHECK ASSEMBLY / BACKFLOW DEVICE AS REQUIRED PER THE CITY OF WINSTON-SALEM STANDARDS. G.C. TO COORDINATE WITH THE CITY OF WINSTON-SALEM UTILITIES (Tel.# 336-747-6853) FOR INSTALLATION OF DOMESTIC WATER SERVICE AND TO VERIFY TYPE OF BACKFLOW DEVICE REQUIRED.
- 3 2" DOMESTIC PVC WATER SERVICE. CONTRACTOR SHALL COORDINATE WITH THE CITY OF WINSTON-SALEM UTILITIES. ALL WATER LINES SHALL HAVE A MINIMUM COVER DEPTH OF 3'-0" IN NON-TRAFFIC AREAS AND 4'-0" IN TRAFFIC AREAS UNLESS OTHERWISE NOTED.
- 4 2" DOMESTIC 2" WATER SERVICE. REFER TO PLUMBING PLANS (BY OTHERS) FOR CONTINUATION.
- 5 SANITARY SEWER SERVICE CONNECTION - TIE INTO EXISTING MANHOLE AS NECESSARY. G.C. TO FIELD VERIFY EXISTING LOCATION / DEPTH, SIZE AND MATERIAL. CONTRACTOR SHALL TIE-IN PRIOR TO MAKING CONNECTION. ALL SANITARY SEWER WORK SHALL BE TO CITY OF WINSTON-SALEM STANDARDS.
- 6 PROPOSED 6" SCHEDULE 40 PVC SANITARY SEWER LINE (BEDDING AND COVER PER SUPPLIER SPECIFICATIONS). NOTE: 14" FT. MINIMUM SLOPE. ALL SEWER LINES SHALL HAVE A FINAL COVER DEPTH OF 4'-0" IN NON-TRAFFIC AREAS AND 5'-0" IN TRAFFIC AREAS UNLESS OTHERWISE NOTED.
- 7 TRAFFIC RATED SANITARY SEWER CLEANOUT PLACE AT 80' INTERVALS. REFER TO DETAIL ON SHEET C-3.1
- 8 REFER TO PLUMBING / BELANGER PLANS (BY OTHERS) FOR CONNECTION TO RECLAIM TANKS AND BUILDING. NOTE: RECLAIM TANKS ARE DESIGNED TO ACCOUNT FOR OIL / SAND / WATER SEPARATION PRIOR TO EFFLUENT. SEE PLUMBING / BELANGER PLANS (BY OTHERS) FOR MORE DETAIL.
- 9 PROPOSED TRANSFORMER LOCATION. CONTRACTOR SHALL COORDINATE EXACT LOCATION AND SIZE REQUIREMENTS WITH LOCAL POWER SERVICE PROVIDER REPRESENTATIVE PRIOR TO INSTALLATION.
- 10 PROPOSED ELECTRICAL CT CABINET. REFER TO ELECTRICAL DRAWINGS (BY OTHERS) FOR DETAILS.
- 11 UNDERGROUND ELECTRIC SERVICE. CONTRACTOR SHALL COORDINATE WITH LOCAL POWER SERVICE PROVIDER REPRESENTATIVE (PATRICK SIZEMORE WITH DUKE ENERGY # 336-917-2522) ON-SITE TO DISCUSS PROPOSED ELECTRICAL SERVICE PRIOR TO CONSTRUCTION.
- 12 PROPOSED VACUUM EQUIPMENT - SHOWN FOR REFERENCE ONLY. REFER TO EUROVAC PLANS (BY OTHERS) FOR EXACT LOCATIONS, DETAILS, AND ADDITIONAL INFORMATION.
- 13 PROPOSED 4" ELECTRICAL CONDUIT TO AIR PUMP STATION.
- 14 PROPOSED NATURAL GAS SERVICE. COORDINATE WITH LOCAL NATURAL GAS SERVICE PROVIDER REPRESENTATIVE FOR PROPER PROCEDURE AND SCHEDULING OF CONNECTION TO EXISTING NATURAL GAS SERVICE.
- 15 PROPOSED TELEPHONE SERVICE. COORDINATE WITH LOCAL TELEPHONE SERVICE PROVIDER REPRESENTATIVE.
- 16 SITE LIGHTING - SHOWN FOR REFERENCE ONLY. REFER TO LIGHTING PLAN (BY OTHERS) FOR EXACT LOCATIONS AND LIGHTING SPECIFICATIONS.
- 17 PROTECT EXISTING UTILITIES TO REMAIN - TYPICAL G.C. TO CONTACT ALL UTILITY COMPANIES TO INSURE THE EXISTING UTILITY SERVICES ARE PROPERLY SHUT-DOWN PRIOR TO THE BEGINNING OF ANY SITE AND/OR DEMOLITION ACTIVITIES.
- 18 G.C. TO CONNECT ALL GROUND (MONUMENT) AND DIRECTIONAL SIGNAGE TO NEW BUILDING AS REQUIRED. COORDINATE WITH CONSTRUCTION MANAGER.
- 19 PROPOSED ELECTRICAL CONDUIT TO OWNER SUPPLIED AIR MACHINE. COORDINATE WITH OWNER'S REPRESENTATIVE.
- 20 PROPOSED ELECTRICAL CONDUIT TO EMERGENCY PHONE AND EMERGENCY SHUTOFF. COORDINATE WITH OWNER'S REPRESENTATIVE.



UTILITY CONTACTS

SANITARY SEWER / WATER
 MOND CATRY
 CITY OF WINSTON-SALEM
 100 E. MAIN STREET, SUITE 235
 WINSTON-SALEM, NC 27101
 Tel.#: 336-747-6853
 rayc@cityofws.org

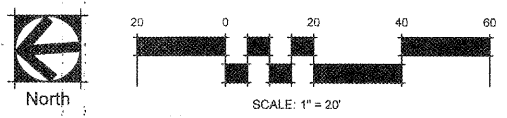
GAS
 JOE FOGARTY
 CITY OF WINSTON-SALEM
 101 N. MAIN STREET
 WINSTON-SALEM, NC 27101
 Tel.#: 336-747-6853
 josephf@cityofws.org

ELECTRIC
 GREG BURTON
 PNG (DUKE ENERGY)
 2300 LOWERY STREET
 WINSTON-SALEM, NC 27101
 Tel.#: 336-917-2522
 greg.burton@duke-energy.com

ELECTRIC
 PATRICK SIZEMORE
 DUKE ENERGY
 500 UTILITY DRIVE
 CLEMMONS, NC 27012
 Tel.#: 336-917-2522
 patrick.sizemore@duke-energy.com

UNIVERSITY PARKWAY - SR 4000
 150' PUBLIC RIGHT OF WAY STATE PROJECT 9.8061830, SEE SHEET 8

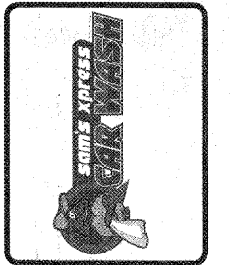
SEE ELECTRICAL SITE PLAN (BY OTHERS) FOR ALL CONDUIT / ELECTRICAL WIRING ROUTING



stimmel
 CIVIL ENGINEERING
 LANDSCAPE ARCHITECTURE
 601 N. T. STREET, SUITE 200
 WINSTON-SALEM, NC 27101
 336.773.6657 F:336.723.1069
 stimmelpa.com

SEAL
 NORTH CAROLINA
 PROFESSIONAL ENGINEER
 JOHN J. JEROME
 039

NO.	DATE	BY	ISSUE



SAM'S XPRESS CAR WASH
 4965 University Parkway
 WINSTON-SALEM, NORTH CAROLINA
SAM'S REAL ESTATE
 7935 COUNCIL PLACE, SUITE 102
 MATTHEWS, NC 28105

811
 BEFORE YOU DIG
 CALL 811 N.C. ONE-CALL CENTER
 IT'S THE LAW!

DESIGNED BY	JAL	CHECKED BY	JAL
DRAWN BY	JAL	DATE	06/29/2017
SCALE	AS SHOWN	JOB NUMBER	17-070

SITE UTILITY PLAN

Sheet
C-3.0