

SURVEY NOTES (from ALTA Survey)

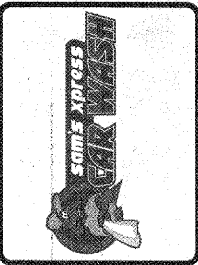
1. SITE IS SUBJECT TO ALL EASEMENTS, RW AND AGREEMENTS OF RECORD PRIOR TO THE DATE OF THE SURVEY.
2. ALL DISTANCES ARE HORIZONTAL GROUND, UNLESS OTHERWISE NOTED.
3. ALL BEARINGS ARE GRID BEARINGS.
4. AREA COMPUTED BY COORDINATE GEOMETRY.
5. PROPERTY DOES NOT LIE IN A SPECIAL FLOOD HAZARD AREA AS BY NC FLOOD MAP 371068270D, EFFECTIVE DATE 12/09, LIES IN ZONE X.
6. ON-SITE GAS SERVICE COULD NOT BE LOCATED.



stimmel
ARCHITECTURE
CIVIL ENGINEERING
LAND SURVEYING
601 N. TRADE STREET, SUITE 200
WINSTON-SALEM, NC 27101
336.723.1167 F: 336.723.1069
www.stimmelpa.com

STIMMEL ASSOCIATES, P.A.
CORPORATE SEAL
C-63
NORTH CAROLINA
EXERCISE OF PROFESSIONAL RIGHTS
JULY 1, 1993
NORTH CAROLINA
JULY 1, 1993

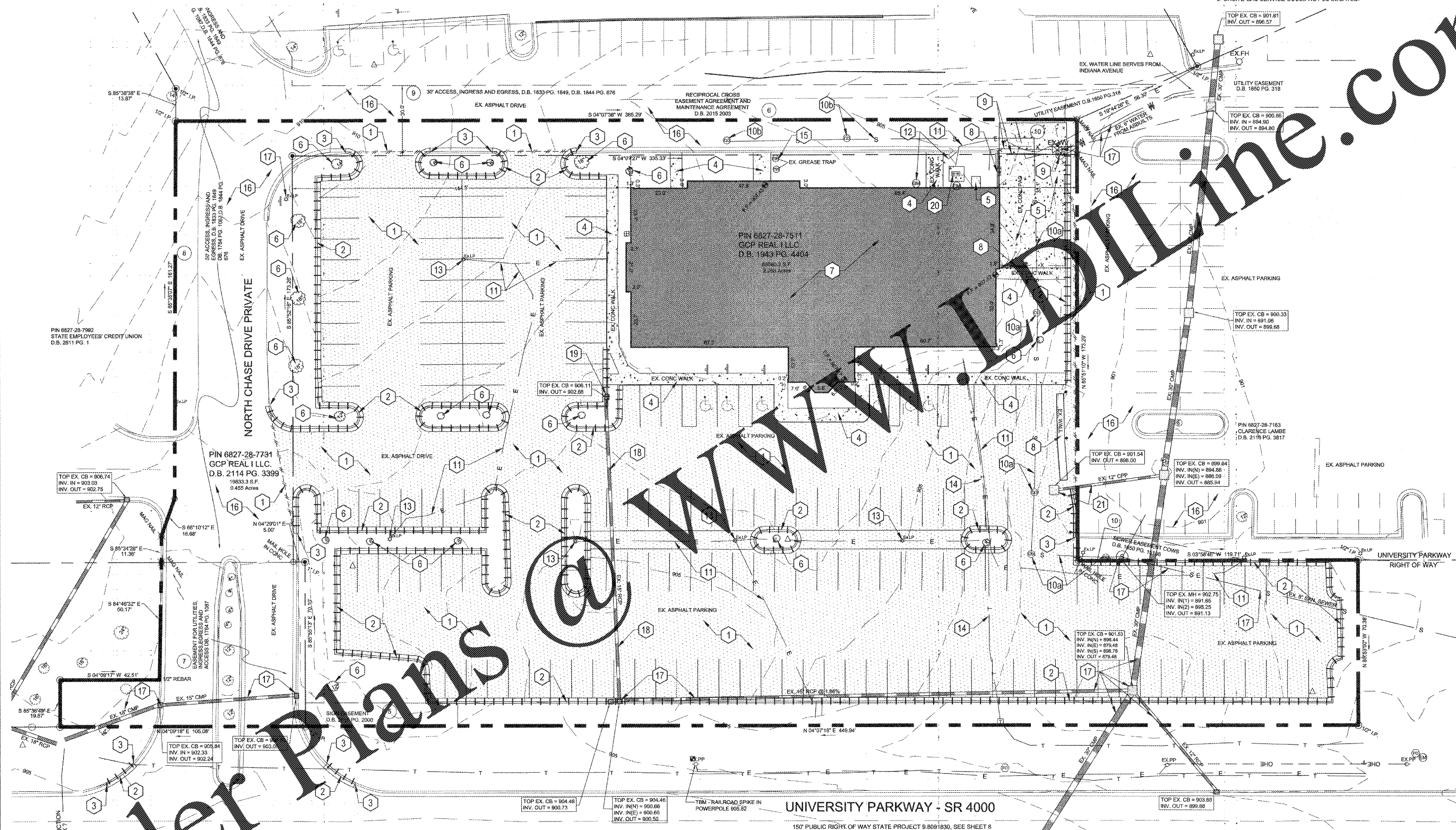
NO.	DATE	BY	ISSUE



SAM'S XPRESS CAR WASH
4965 University Parkway
WINSTON-SALEM, NORTH CAROLINA
SAM'S REAL ESTATE
7935 COUNCIL PLACE, SUITE 102
MATTHEWS, NC 28105

DESIGNED BY	JAL	CHECKED BY	JAL
DRAWN BY	JAL/JKB	DATE	06/29/2017
SCALE	AS SHOWN	JOB NUMBER	17-070

Sheet
C-1.0



DEMOLITION REFERENCE NOTES:

1. SAW-CUT AND REMOVE EXISTING ASPHALT PAVING - TYPICAL.
2. REMOVE EXISTING CURBING OR CURB & GUTTER - TYPICAL.
3. EXTENTS OF CURB AND GUTTER REMOVAL, REFER TO SITE LAYOUT PLAN (SHEET C-2.0) FOR CURB & GUTTER TIE-IN LOCATIONS - TYPICAL.
4. REMOVE EXISTING CONCRETE AND/OR TILE PAVEMENT - TYP.
5. REMOVE EXISTING CONCRETE - TYPICAL.
6. REMOVE EXISTING TREE / LANDSCAPING - TYPICAL.
7. REMOVE EXISTING BUILDING PRIOR TO DEMOLITION, VERIFY THAT ALL REQUIRED ENVIRONMENTAL PERMITS ARE ON THE JOBSITE.
8. REMOVE EXISTING WALL.
9. REMOVE EXISTING WATER UTILITY SERVICE CONNECTIONS, METERS, AND ON-SITE WATER LINES AS REQUIRED. G.C. TO CONTACT ALL APPLICABLE UTILITY COMPANIES TO INSURE THE UTILITIES ARE PROPERLY SHUT-DOWN PRIOR TO THE START OF ANY SITE AND/OR DEMOLITION WORK.
- 10a. REMOVE EXISTING ON-SITE SANITARY SEWER UTILITY SERVICE CONNECTIONS FROM BUILDINGS TO EXISTING SERVICE LATERAL CONNECTION LOCATION TO REMAIN FOR RE-USE. REFER TO SITE UTILITY PLAN (SHEET C-3.0) FOR PROPOSED TIE-IN LOCATION.
- 10b. ABANDON IN PLACE AND CAP PORTION OF EXISTING SANITARY SEWER TO REMAIN IN ACCESS EASEMENT. (IN EXISTING UNDISTURBED PAVEMENT AREA TO REMAIN)
11. REMOVE EXISTING UNDERGROUND POWER SERVICE LINES AS REQUIRED. G.C. TO CONTACT ALL APPLICABLE UTILITY COMPANIES TO INSURE THE UTILITIES ARE PROPERLY SHUT-DOWN PRIOR TO THE START OF ANY SITE AND/OR DEMOLITION WORK.
12. EXISTING GAS SERVICE LINE TO BE CAPPED. G.C. TO CONTACT GREG BURTON IN ADVANCE AT (704) 471-1111 (DUKE ENERGY) TO CAP OLD SERVICE LINE AND PLAN NEW SERVICE. (336-978-8053) G.C. TO CONTACT ALL APPLICABLE UTILITY COMPANIES TO INSURE THE UTILITIES ARE PROPERLY SHUT-DOWN PRIOR TO THE START OF ANY SITE AND/OR DEMOLITION WORK.
13. REMOVE EXISTING LIGHTPOLE AND ASSOCIATED WIRING - TYPICAL. REFER TO LIGHTING PLAN (BY OTHERS) FOR NEW LOT LIGHT LOCATIONS.
14. REMOVE EXISTING TELEPHONE SERVICE CONNECTIONS AS REQUIRED. G.C. TO CONTACT ALL APPLICABLE UTILITY COMPANIES TO INSURE THE UTILITIES ARE PROPERLY SHUT-DOWN PRIOR TO THE START OF ANY SITE AND/OR DEMOLITION WORK.
15. REMOVE EXISTING GREASE TRAP.
16. PROTECT ALL OFF-SITE PAVING / CURBING (TO REMAIN) FROM CHIPPING OR BREAKING. PATCH & REPAIR EXISTING ITEMS DAMAGED DURING CONSTRUCTION AT NO COST TO THE OWNER.
17. PROTECT EXISTING UTILITIES TO REMAIN-TYPICAL. G.C. TO CONTACT ALL APPLICABLE UTILITY COMPANIES TO INSURE THE UTILITIES ARE PROPERLY SHUT-DOWN PRIOR TO THE START OF ANY SITE AND/OR DEMOLITION WORK.
18. REMOVE EXISTING STORM DRAINAGE LINE.
19. REMOVE EXISTING CATCH BASIN.
20. REMOVE EXISTING TRANSFORMER. COORDINATE WITH APPLICABLE UTILITY COMPANY.
21. REMOVE EXISTING INLET AND CAP END OF EXISTING 12" PIPE TO REMAIN AT PROPERTY LINE.

