

Luminaire Schedule / \*Did you know that utility rebates can cover 25% or more of a products cost? Email rebates@cree.com to get help on your project!\*

Symbol	Qty	Label	Arrangement	Lumens/Lamp	LLF	Lum. Watts	Description
■	24	SLa	SINGLE	7349	0.950	71	CAN-304-SL-RS-04-E-UL-WH-525
■	6	SLb	SINGLE	5153	0.950	46	SFT-304-SL-RM-04-E-UL-WH-350
■	5	PSb	SINGLE	9213	0.950	94	PKG-304-PS-DM-04-E-UL-WH-700
■	6	EHO-3MB_1a	SINGLE	25117	0.970	421	ARE-EHO-3MB-HV-12-E-UL-SV-1000
■	2	EHO-4M_1a	SINGLE	35815	0.970	421	ARE-EHO-4M-HV-12-E-UL-SV-1000
■	1	EHO-4M_1b	SINGLE	26173	0.970	267	ARE-EHO-4M-HV-12-E-UL-SV-700
■	2	EHO-5M_2b	BACK-BACK	27532	0.970	267	ARE-EHO-5M-HV-12-E-UL-SV-700

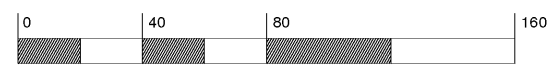
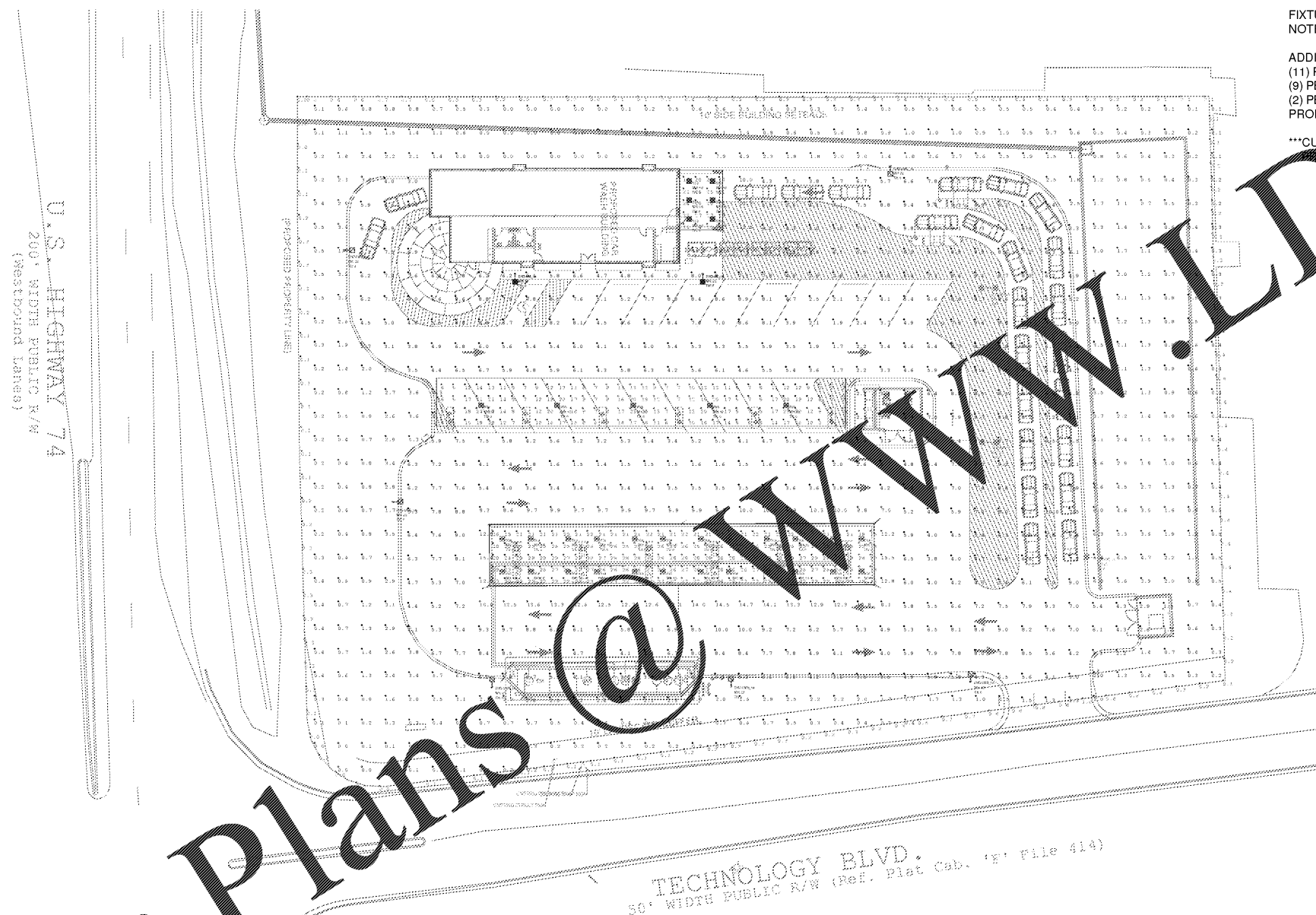
Footcandles calculated using predicted lumen values after 50K hours of operation

Label	Units	Avg	Max	Min	Avg/Min	Max/Min
Gas Canopy	Fc	24.18	30	15	1.61	2.00
Pavement	Fc	5.82	10.0	1.2	4.85	
Property Line	Fc	0.27	1.0	0.0	N.A.	N.A.
Site	Fc	2.38	15.5	0.0	N.A.	N.A.
Tunnel Entrance	Fc	23.15	29	17	1.36	1.71
Vacuum Canopy	Fc	11.69	24	2	5.85	12.00

FIXTURE MOUNTING HEIGHTS AS SHOWN  
NOTE: 20' POLE + 2' BASE = 22' MH

ADDITIONAL EQUIPMENT REQUIRED:  
(11) PS4S20CTSV (20' 4" x 0.125" STEEL SQUARE POLE, TENON MOUNT)  
(9) PB-1A4SV SINGLE TENON  
(2) PB-2A4SV TWIN TENON  
PROPOSED POLES MEET 20MPH SUSTAINED WIND LOADS

\*\*\*CUSTOMER TO VERIFY MOUNTING, VOLTAGE, AND COLOR  
TO PLACING ORDER



Order Plans @

WWW.LDLINE.COM



1200 92nd Street - Sturtevant, WI 53177  
www.cree.com - (800) 236-6900

Project Name: SAM'S XPRESS CAR WASH - INDIAN TRAIL, NC / SR No. 23848

Date: 6/27/2017 / Scale: 1"=40' / Footcandles calculated at grade

Filename: RJ170605NTNCJER1.AGI / Layout by: JACOB EDLER

Illumination results shown on this lighting design are based on project parameters provided to Cree, Inc. used in conjunction with luminaire test procedures conducted under laboratory conditions. Actual project conditions differing from these design parameters may affect field results. The customer is responsible for verifying dimensional accuracy along with compliance with any applicable electrical, lighting, or energy code.