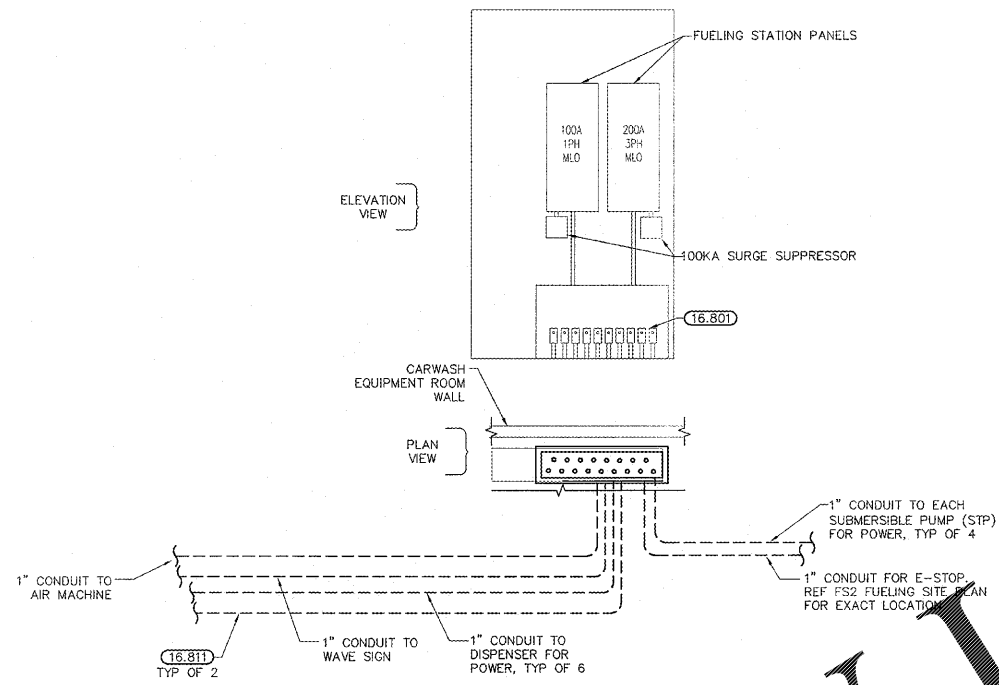


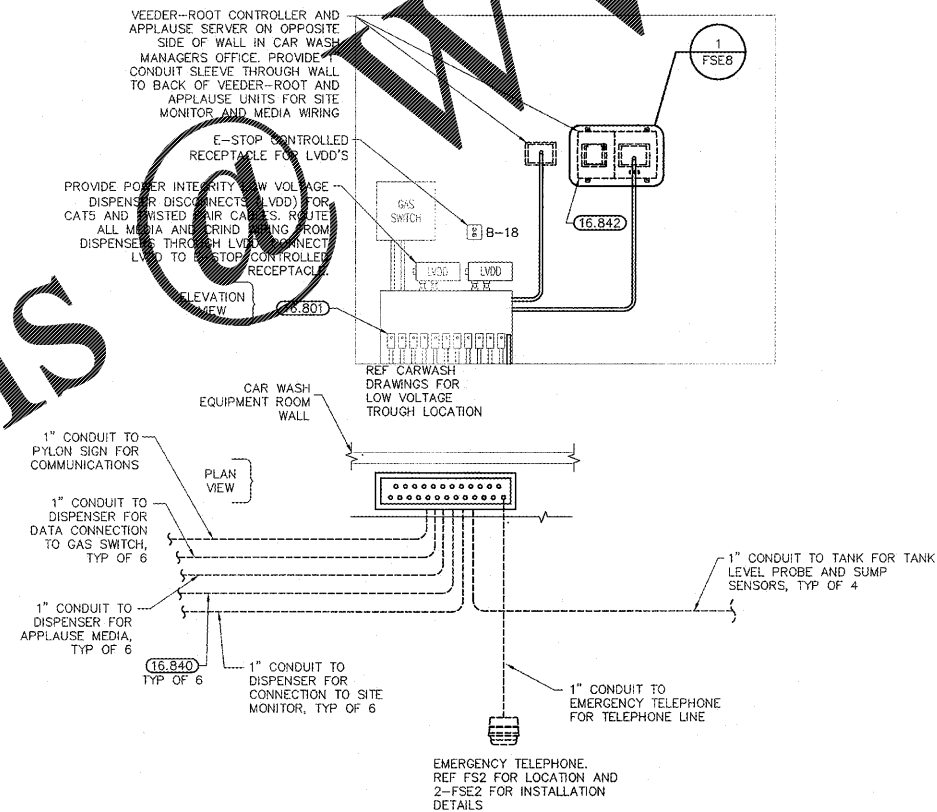
Order Plans

CARWASH EQUIPMENT ROOM WALL INTERIOR ELEVATION



2 POWER ONE-LINE DIAGRAM
NTS

CAR WASH EQUIPMENT ROOM WALL INTERIOR ELEVATION



1 DATA/SITE MONITORING ONE-LINE DIAGRAM
NTS

KEYNOTES

- 16.801 SEAL-OFF ALL CONDUITS THAT ENTER OR PASS THROUGH OR UNDER A CLASSIFIED AREA. REF 2-FSE3.
- 16.811 1" - 1" CONDUIT WITH SEAL-OFF INSIDE COLUMN BY CANOPY MANUFACTURER. REF TO CANOPY MANUFACTURER'S DRAWINGS FOR EXACT LOCATION OF COLUMN. SEAL AFTER CIRCUITS HAVE BEEN PULLED, TESTED AND ARE FUNCTIONING PROPERLY.
- 16.840 PROVIDE 1" GRC FROM SECURITY CAMERA AT COLUMN TO DATA CONDUIT RING CABINET WITH SEAL-OFFS AT EACH END. CONTRACTOR TO MAKE CONNECTIONS AT EACH COLUMN BASE. SECURITY CAMERA CABLING SUPPLIED AND INSTALLED BY OWNER. REF 1-FSE1 FOR EXACT CANOPY COLUMN LOCATIONS.
- 16.842 INSTALL SITE MONITOR PANEL FURNISHED BY OWNER. DIRECT CONNECT. PROVIDE ISOLATED GROUND IN ADDITION TO EQUIPMENT GROUNDING CONDUCTOR PER MANUFACTURER'S RECOMMENDATION. ALL TERMINATIONS SHOULD BE INSTALLED PER RECOMMENDATION OF MANUFACTURER, REF 1-FSE8.



HARRISON FRENCH & ASSOCIATES, PLLC
1705 S. W. 1st Blvd., Suite 3
Ft. Smith, Arkansas 72712
501.273.7780
501.888.520.9685
www.hfa-ac.com

STIPULATION FOR REUSE
THIS DRAWING WAS PREPARED FOR USE ON A SPECIFIC PROJECT AND IS NOT TO BE REPRODUCED OR COPIED IN ANY MANNER WITHOUT THE WRITTEN CONSENT OF HARRISON FRENCH & ASSOCIATES, PLLC. ANY REUSE OF THIS DRAWING FOR ANY OTHER PROJECT WITHOUT THE WRITTEN CONSENT OF HARRISON FRENCH & ASSOCIATES, PLLC IS STRICTLY PROHIBITED AND MAY BE CONSIDERED A VIOLATION OF PROFESSIONAL ETHICS.

SAM'S MART
US HY 74 & TECHNOLOGY BLVD
INDIAN TRAIL, NC 28079
JOB NUMBER: 07-16-80004

ISSUE BLOCK

| | |
|--|--|
| | |
| | |
| | |
| | |
| | |
| | |
| | |
| | |
| | |
| | |

STORE NO.:
DOCUMENT DATE: 05-31-17
CHECKED BY: JAC
DRAWN BY: KRS
PROTO CYCLE MAY-2017



HARRISON FRENCH AND ASSOCIATES, PLLC
P-0402
5-31-17

SITE CONDUIT DETAILS

ONE-LINE DIAGRAM SHOWN FOR REPRESENTATIVE PURPOSE ONLY. FUELING CONTRACTOR SHALL COORDINATE ALL CONDUITS AND CONDUCTORS.

SHEET: FSE4