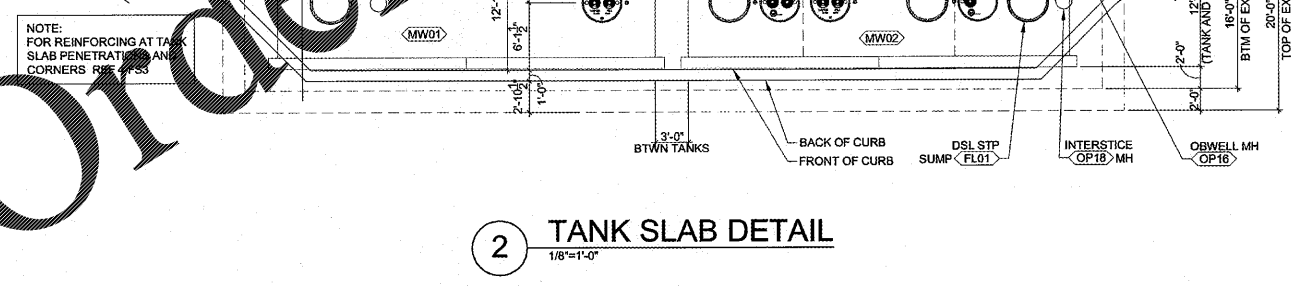
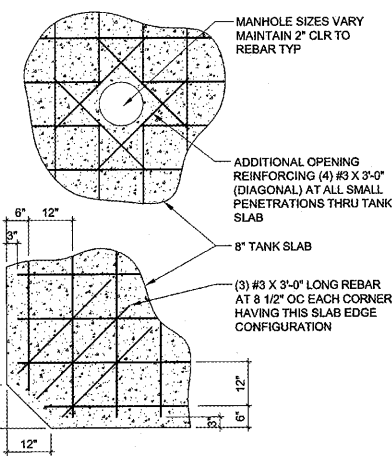


#	FS3 KEYNOTES	GENERAL NOTES
1	6" REINFORCED CONCRETE SLAB AT FUELING CANOPY. REF 1-FS4 AND CIVIL DRAWINGS FOR TOS ELEVATIONS.	1 ALL CONSTRUCTION SHALL MEET COUNTY STANDARDS. CONTRACTOR TO SECURE ENTIRE CONSTRUCTION AREA WITH CHAIN LINK FENCING DURING CONSTRUCTION PERIOD.
2	GEOTECH FABRIC MATERIAL TO EXTEND 12" PAST EACH SIDE OF PIPING TRENCH.	2 THE CONTRACTOR SHALL IMMEDIATELY NOTIFY ENGINEER OF ANY DIFFERENCES BETWEEN THE ACTUAL FIELD CONDITIONS AND PLANS BEFORE PROCEEDING WITH CONSTRUCTION.
3	PIPING TRENCHES SHALL BE DUG IN SUCH A MANNER THAT THE TRENCH WIDTH IS EQUAL TO AT LEAST TWICE WIDTH OF ALL PIPING CONTAINED WITHIN. MAINTAIN A MINIMUM OF 4" (10cm) CLEAR DISTANCE BETWEEN PIPING POSITIONED IN THE TRENCH AND 6" WHERE PIPING CROSSES OVER EACH OTHER. THE BOTTOM OF THE TRENCH SHALL BE AS UNIFORM AS POSSIBLE TO ELIMINATE HIGH SPOTS AND ENSURING AN EVEN LAYER OF BEDDING MATERIAL FOR THE PIPE. REMOVE ALL SHARP ROCKS AND DEBRIS FROM THE TRENCH BOTTOM BEFORE BEDDING MATERIAL IS LAYED.	3 PETROLEUM CONTRACTOR SHALL BE RESPONSIBLE FOR THE INTEGRITY OF THE ENTIRE SYSTEM DURING CANOPY ERECTION AND CONCRETE FLATWORK INSTALLATION.
4	SITE CONDITIONS, LOCAL VARIATIONS WHICH MUST BE APPROVED BY OWNER AND MANUFACTURER. PIPING BURIAL DEPTHS LESS THAN 18" REQUIRES OWNER APPROVAL.	4 AFTER COMPLETING INSTALLATION OF DISPENSERS, THE PETROLEUM CONTRACTOR SHALL INSTALL BRIGHT ORANGE CONSTRUCTION FENCE AROUND ENTIRE DISPENSER.
5		5 PETROLEUM CONTRACTOR IS TO BE AWARE THAT ON THE DAY THE GASOLINE SYSTEM IS PUT INTO SERVICE, THE GAS CONTRACTOR AND A GILBARCO AUTHORIZED SERVICE CONTRACTOR MUST BE ON SITE ONE (1) HOUR PRIOR TO STARTUP AND MUST REMAIN ON SITE THREE (3) ADDITIONAL HOURS FOR A TOTAL OF FOUR (4) HOURS. ANY COSTS INCURRED OVER FOUR (4) HOURS DUE TO FUELING SYSTEM ISSUES, SHOULD BE BILLED AS A CHANGE ORDER.

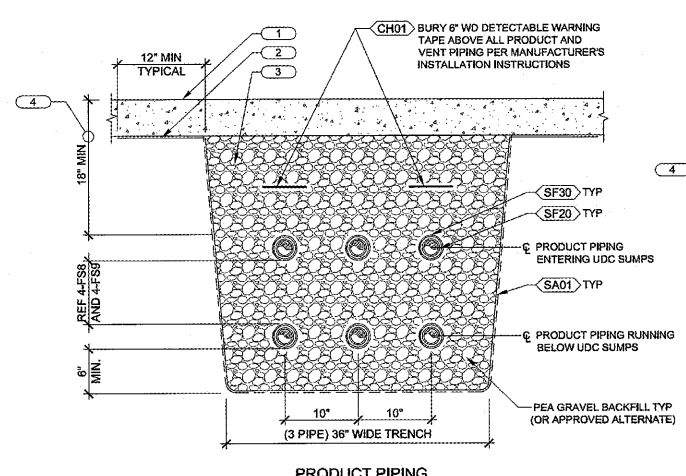
FLOW RATE
1-6 NOZZLES - 10 GPM
8 NOZZLES - 8.4 GPM
10 NOZZLES - 7.3 GPM
12 NOZZLES - 6.2 GPM

1 FUELING PIPING PLAN
1/8"=1'-0"

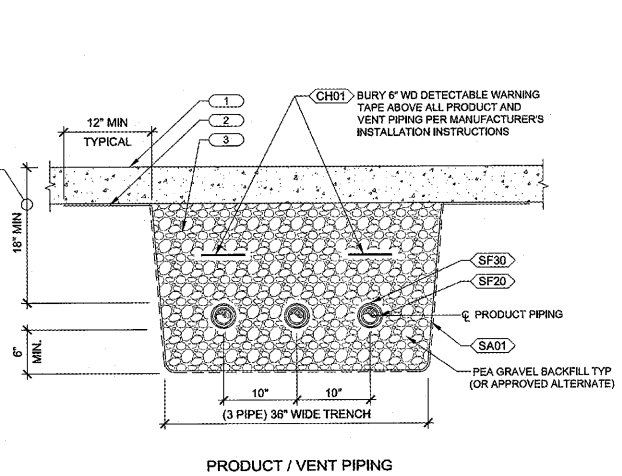
4 MISC SLAB REINFORCING DETAILS
1/2"=1'-0"



2 TANK SLAB DETAIL
1/8"=1'-0"



3 PIPING TRENCH DETAIL AT UDC'S
1"=1'-0"



3A PIPING TRENCH DETAIL
1"=1'-0"

HARRISON FRENCH AND ASSOCIATES, PLLC
 1005 S. Walnut St., Suite 300
 Raleigh, NC 27612
 410-383-7700
 f888-212-9685
 www.hfa-ac.com

STIPULATION FOR REUSE:
 THIS DRAWING HAS BEEN PREPARED BY AN ENGINEER OR ARCHITECT IN FULL COMPLIANCE WITH THE NC PROFESSIONAL SEALING ACT AND THE NC BOARD OF EXAMINERS FOR PROFESSIONAL ENGINEERS AND ARCHITECTS. ANY REUSE OF THIS DRAWING FOR ANY OTHER PROJECT WITHOUT THE WRITTEN AUTHORIZATION OF HARRISON FRENCH AND ASSOCIATES, PLLC IS STRICTLY PROHIBITED.

SAM'S MART
 US HY 74 & TECHNOLOGY BLVD
 INDIAN TRAIL, NC 28079

JOB NUMBER: 07-16-80004

ISSUE BLOCK	
NO.	DESCRIPTION

STORE NO: _____
 DOCUMENT DATE: 05-31-17
 CHECKED BY: BKH
 DRAWN BY: JMA
 PROTO CYCLE: MAY-2017

HARRISON FRENCH AND ASSOCIATES, PLLC
 P-0402
 JUN 01 2017

PIPING PLAN AND DETAILS

SHEET: **FS3**