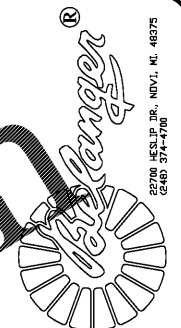
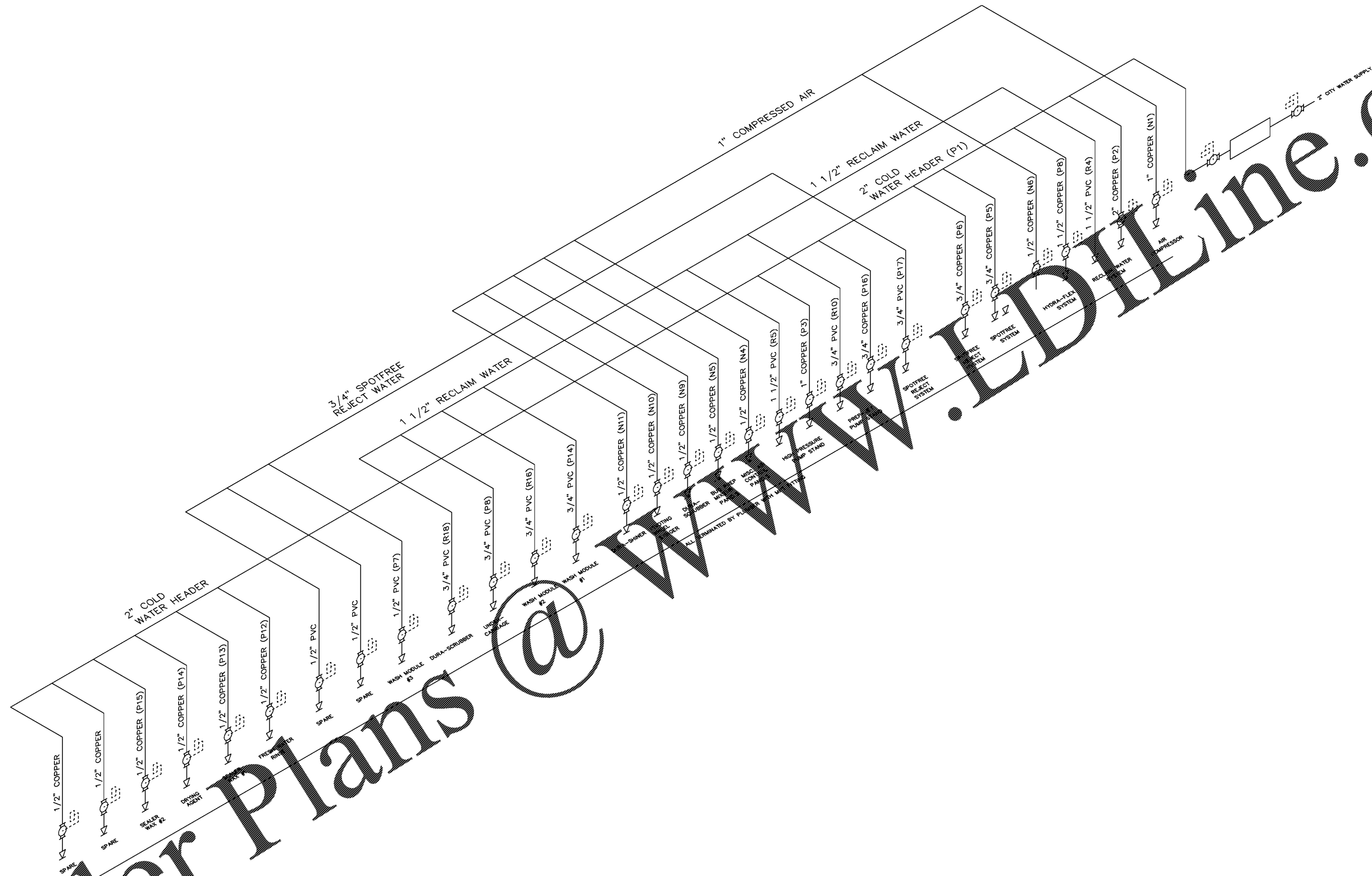


Order Plans



22700 HESLER DR., INDY, IN 46375
6240 374-4700

SAMS EXPRESS - INDIAN TRAIL
BELANGER CARWASH SYSTEM
PLUMBING ISOMETRIC

DRAWN: S. MCBRIDE DATE: 4/19/17
CHECKED: S. MCBRIDE DATE: 4/19/17
APPROVED: DATE:

SCALE: N/A
PAPER: 22"x34"

REV	DATE	ENGR	APPR	DESCRIPTION
				HARD COPY IS INTENDED TO BE 22"x34" WHEN PRINTED SCALE(S) ARE NOT ACCURATE FOR ANY OTHER SIZE

PROJECT #:
INDIAN TRAIL

SHEET #:
P5

BELANGER, INC. STANDARD NOTE TO CONTRACTORS:
THIS SET OF DRAWINGS AND DOCUMENTS IS INTENDED AS A SET OF GUIDELINES FOR THE PROJECT. THEY MUST BE READ TO INCORPORATE ALL APPLICABLE FEDERAL, STATE AND LOCAL CODES INCLUDING FEDERAL A.D.A. REQUIREMENTS. THIS SET ASSUMES THAT THERE ARE NO UNUSUAL SOIL CONDITIONS. THE FAILURE OF THIS CONDITION MAY REQUIRE SIGNIFICANT CHANGES TO THESE DOCUMENTS. IT IS THE RESPONSIBILITY OF THE GENERAL CONTRACTOR TO CONFORM TO ALL APPLICABLE CODES AND TO INFORM THE OWNERS/ARCHITECTS OF ANY QUESTIONS OR CLARIFICATIONS WHICH ARE DESIRED. CONTRACTORS ARE ASSUMED TO KNOW ALL OBSERVANCE CONDITIONS.

THIS DRAWING IS AND SHALL REMAIN THE PROPERTY OF BELANGER, INC. USE, REPRODUCTION OR ALTERATION OF THIS DRAWING WITHOUT THE EXPRESSED WRITTEN PERMISSION OF BELANGER, INC. IS PROHIBITED.