


ALL DESIGNS, DRAWINGS AND SPECIFICATIONS DEPICTED ON THIS SHEET ARE THE PROPERTY OF R IV ARCHITECTURE, P.A. ANY UNAUTHORIZED USE OR REPRODUCTION IS SUBJECT TO LEGAL PROSECUTION. POSSESSION IN ANY FORM CONSTITUTES ACCEPTANCE OF THESE CONDITIONS. COPYRIGHT 2017




**Project**  
Sam's Mart  
E. Independence Blvd.  
Indian Trail, NC 28097


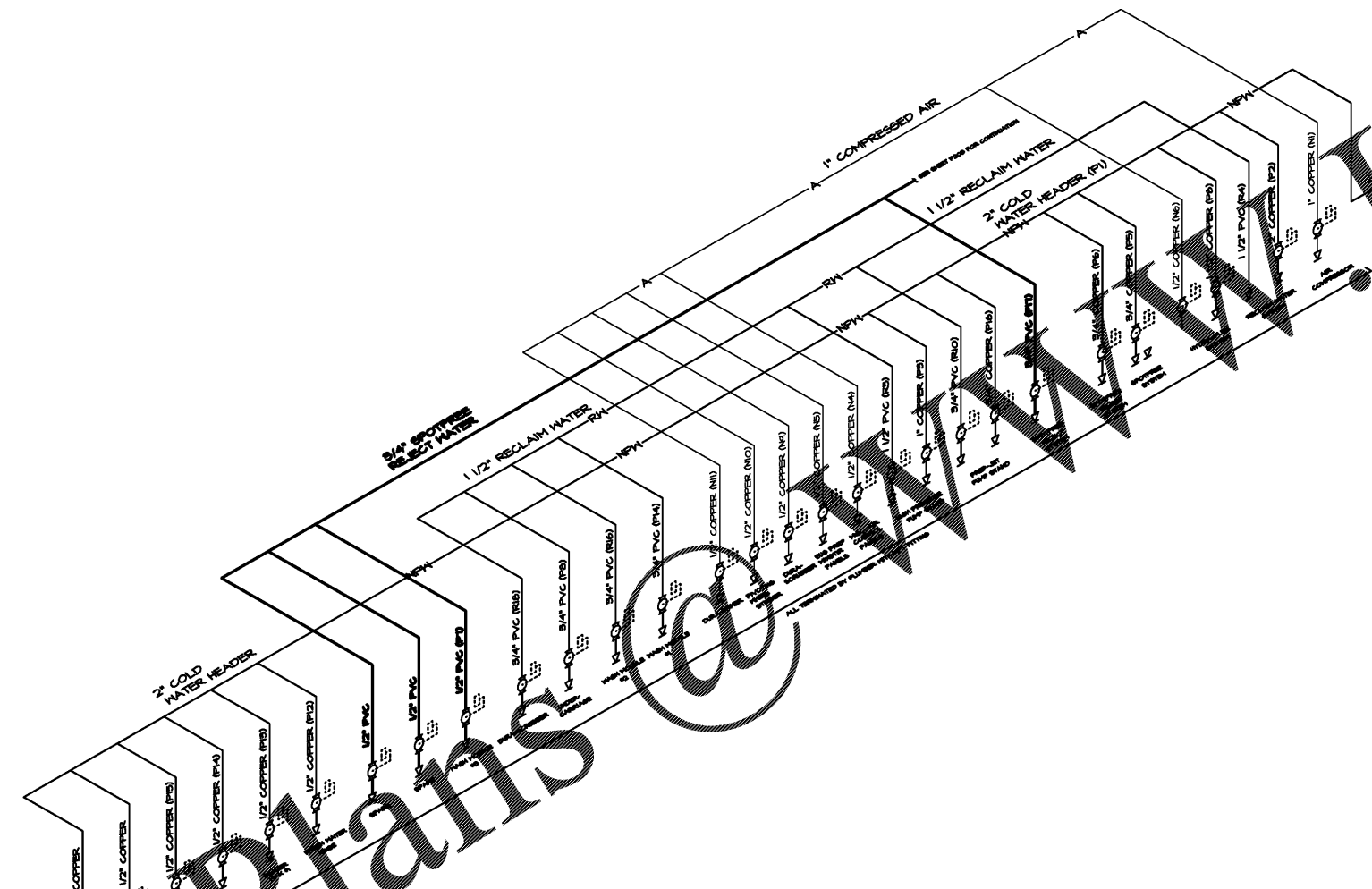
**Owner**  
Sam's Mart  
2807 Council Place  
Suite 200  
Matthews, NC 28105

**ENGINEERING**  
2923 South Tryon Street  
Charlotte, North Carolina  
tel 704.373.0068

MECHANICAL ELECTRICAL PLUMBING



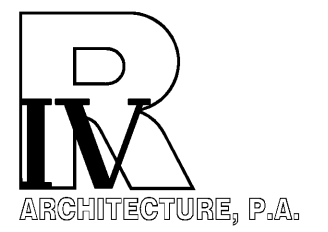
SEAL 000005  
H. WAYNE KING, II  
April 30, 2017  
FIRM NUMBER = C-2130

Order Plans

- NOTES - THIS SHEET**
- 2" NON-POTABLE WATER (NPH) WATER LINE DOWNSTREAM OF DOMESTIC WATER SUPPLY BACKFLOW PREVENTER. SEE SHEET P200 FOR CONTINUATION.
  - 3/4" BALL VALVE STUB OUT FOR CAR WASH EQUIPMENT PIPING SUPPLY CONNECTION.
  - 1 1/2" RECLAIM WATER SUPPLY FROM RECLAIM PUMP.
  - 1 1/2" TEE WITH ISOLATION VALVE AS PROVISION FOR FUTURE IN-LINE BOOSTER PUMP INSTALLATION.

- NOTE TO CONTRACTOR**
- THE PLUMBING CONTRACTOR SHALL COORDINATE WITH THE EQUIPMENT DRAWINGS FOR INSTALLATION OF ALL PIPING RELATING TO ALL EQUIPMENT AND REQUIRED CONNECTIONS PER EQUIPMENT SUPPLIER/OWNER LAYOUT. ALL WORK SHALL BE IN ACCORDANCE WITH STATE AND LOCAL CODES.
  - THE PLUMBING CONTRACTOR SHALL COORDINATE ALL UTILITIES AND LINES RELATING TO CAR WASHING EQUIPMENT WITH THE CIVIL ENGINEER AND THE CIVIL DRAWINGS.



**124 Floyd Smith Dr  
Suite 375  
Charlotte, NC 28262  
Tel - 704 - 688-7500**

**7301 Rivers Avenue  
Suite 188  
North Charleston, SC 29406  
Tel - 843 - 531-6848**

[www.R4architecture.com](http://www.R4architecture.com)

Revision	Date

**Drawn By** Saber  
**Checked By** Saber  
**Issue Date** 07-05-17  
**Project No** 160345

**Sheet Title**  
EQUIPMENT  
WATER RISER  
DIAGRAM

**Sheet Number**  
**P301**