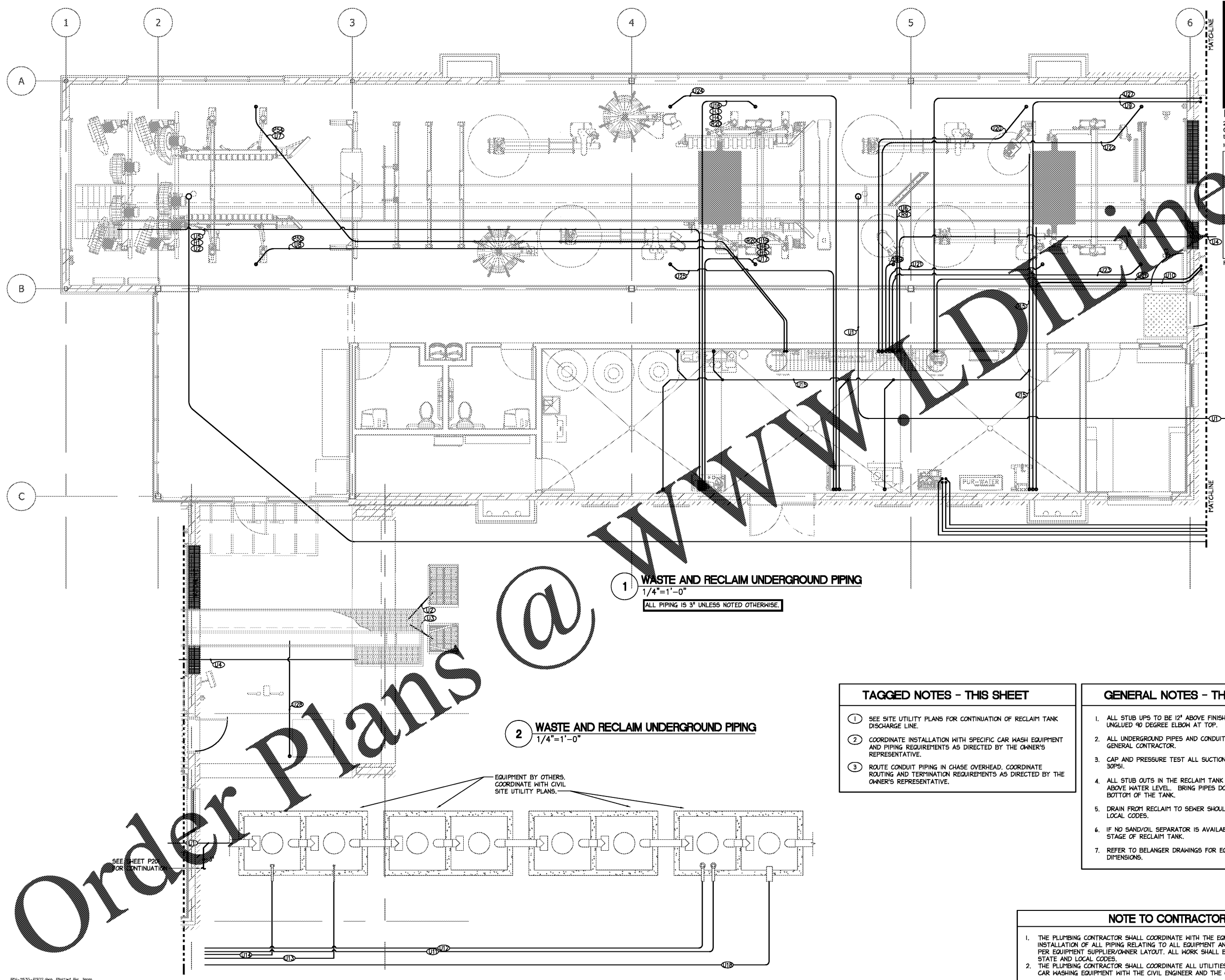


ALL DESIGNS, DRAWINGS AND SPECIFICATIONS DEPICTED ON THIS SHEET ARE THE PROPERTY OF R IV ARCHITECTURE, P.A. ANY UNAUTHORIZED USE OR REPRODUCTION IS SUBJECT TO LEGAL PROSECUTION. POSSESSION IN ANY FORM CONSTITUTES ACCEPTANCE OF THESE CONDITIONS. COPYRIGHT 2017



Project
 Sam's Mart
 E. Independence Blvd.
 Indian Trail, NC 28097

Owner
 Sam's Mart
 2823 South Tryon Street
 Charlotte, North Carolina
 tel 704.373.0068

SABER ENGINEERING
 2823 South Tryon Street
 Charlotte, North Carolina
 tel 704.373.0068
 MECHANICAL ELECTRICAL

FIRM NUMBER = C-2130

Professional Engineer
 SEAL 04290005
 W. WAYNE KING, II
 APR 20, 2017

Sam's Express CAR WASH

R IV ARCHITECTURE, P.A.

**124 Floyd Smith Dr
 Suite 375
 Charlotte, NC 28262
 Tel - 704 - 688-7500**

**7301 Rivers Avenue
 Suite 188
 North Charleston, SC 29406
 Tel - 843 - 531-6848**

www.R4architecture.com

Revision	Date

Drawn By Saber
Checked By Saber
Issue Date 07-05-17
Project No 160345

Sheet Title
 WASTE AND RECLAIM
 UNDERGROUND
 PIPING

Sheet Number
P202

1 WASTE AND RECLAIM UNDERGROUND PIPING
 1/4"=1'-0"
 ALL PIPING IS 3" UNLESS NOTED OTHERWISE.

2 WASTE AND RECLAIM UNDERGROUND PIPING
 1/4"=1'-0"

EQUIPMENT BY OTHERS.
 COORDINATE WITH CIVIL
 SITE UTILITY PLANS.

- TAGGED NOTES - THIS SHEET**
- SEE SITE UTILITY PLANS FOR CONTINUATION OF RECLAIM TANK DISCHARGE LINE.
 - COORDINATE INSTALLATION WITH SPECIFIC CAR WASH EQUIPMENT AND PIPING REQUIREMENTS AS DIRECTED BY THE OWNER'S REPRESENTATIVE.
 - ROUTE CONDUIT PIPING IN CHASE OVERHEAD. COORDINATE ROUTING AND TERMINATION REQUIREMENTS AS DIRECTED BY THE OWNER'S REPRESENTATIVE.

- GENERAL NOTES - THIS SHEET**
- ALL STUB UPS TO BE 12" ABOVE FINISHED FLOOR. WITH UNGLUED 90 DEGREE ELBOW AT TOP.
 - ALL UNDERGROUND PIPES AND CONDUITS TO BE PROVIDED BY GENERAL CONTRACTOR.
 - CAP AND PRESSURE TEST ALL SUCTION LINES FOR 24 HOURS AT 30PSI.
 - ALL STUB OUTS IN THE RECLAIM TANK TO BE A MINIMUM 6" ABOVE WATER LEVEL. BRING PIPES DOWN TO 12" ABOVE THE BOTTOM OF THE TANK.
 - DRAIN FROM RECLAIM TO SEWER SHOULD FOLLOW STATE AND LOCAL CODES.
 - IF NO SAND/OIL SEPARATOR IS AVAILABLE, DRAIN TO FIRST STAGE OF RECLAIM TANK.
 - REFER TO BELANGER DRAWINGS FOR EQUIPMENT SCHEDULES AND DIMENSIONS.

- NOTE TO CONTRACTOR**
- THE PLUMBING CONTRACTOR SHALL COORDINATE WITH THE EQUIPMENT DRAWINGS FOR INSTALLATION OF ALL PIPING RELATING TO ALL EQUIPMENT AND REQUIRED CONNECTIONS PER EQUIPMENT SUPPLIER/OWNER LAYOUT. ALL WORK SHALL BE IN ACCORDANCE WITH STATE AND LOCAL CODES.
 - THE PLUMBING CONTRACTOR SHALL COORDINATE ALL UTILITIES AND LINES RELATING TO CAR WASHING EQUIPMENT WITH THE CIVIL ENGINEER AND THE CIVIL DRAWINGS.

Order Plans @

SEE SHEET P201 FOR CONTINUATION