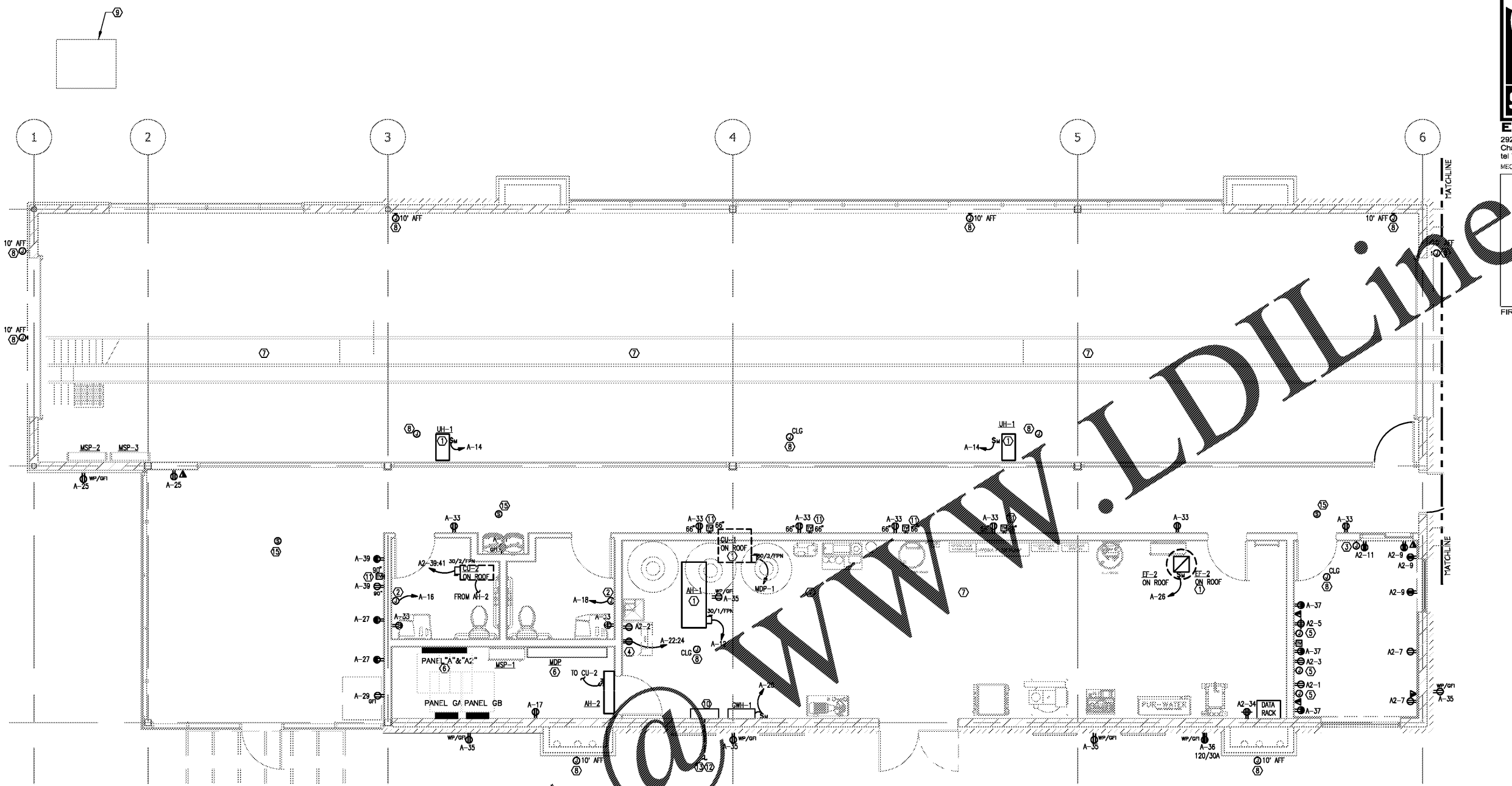


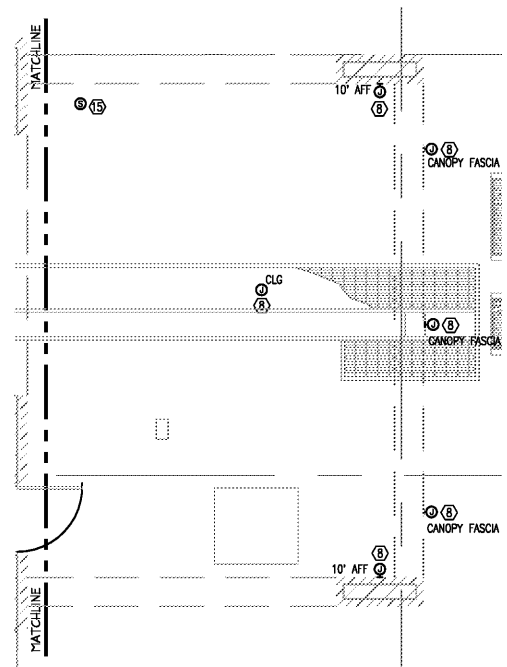
ALL DESIGNS, DRAWINGS AND SPECIFICATIONS DEPICTED ON THIS SHEET ARE THE PROPERTY OF R IV ARCHITECTURE, P.A. ANY UNAUTHORIZED USE OR REPRODUCTION IS SUBJECT TO LEGAL PROSECUTION. POSSESSION IN ANY FORM CONSTITUTES ACCEPTANCE OF THESE CONDITIONS. COPYRIGHT 2017



Order Plans

**1 POWER PLAN**  
1/4"=1'-0"

- NOTES:
- ① NEW HVAC EQUIPMENT, CIRCUIT AS SHOWN. VERIFY EXACT LOCATION WITH OWNER AND MC.
  - ② PROVIDE CONNECTION FOR HAND DRYER. COORDINATE LOCATION AND HEIGHT WITH EQUIPMENT SUPPLIER.
  - ③ PROVIDE POWER CONNECTION TO ICS POWER DISTRIBUTION. PROVIDE 4"x4" JUNCTION BOX AND 1" CONDUIT TO ABOVE CEILING FOR DATA CABLES.
  - ④ VERIFY WITH MANUFACTURER THAT STANDARD 240 VOLT UNIT CAN BE SETUP TO RUN AT 208 VOLT.
  - ⑤ PROVIDE 1" CONDUITS WITH PULLSTRING FROM DVR, ALARM PANEL LOCATIONS IN OFFICE, TO ABOVE ACCESSIBLE CEILING FOR SECURITY AND ALARM CABLES.
  - ⑥ PROPOSED LOCATIONS OF NEW PANELS "MDP" AND "A". SEE ELECTRICAL RISER DIAGRAM.
  - ⑦ SEE CAR WASH ELECTRICAL CONNECTIONS, SHEET E301, FOR POWER CONDUIT AND CONDUCTORS FOR CAR WASH EQUIPMENT IN BUILDING. SEE CAR WASH ELECTRICAL CONTROL CONNECTIONS, SHEET E302, FOR CONDUIT FOR CAR WASH EQUIPMENT IN BUILDING.
  - ⑧ PROVIDE JUNCTION BOX AND 3/4" CONDUIT BACK TO ABOVE ACCESSIBLE CEILING IN BUILDING FOR SECURITY CAMERAS.
  - ⑨ SEE CIVIL PLANS FOR UTILITY TRANSFORMER LOCATION.
  - ⑩ VACUUM CONTROL PANEL.
  - ⑪ PROPOSED LOCATION FOR TELEVISION OUTLET. COORDINATE LOCATION WITH OWNER/ARCHITECT PRIOR TO INSTALLATION.
  - ⑫ PROVIDE CONDUITS AND CONDUCTORS FROM VACUUM CONTROL PANEL TO VACUUM ASSEMBLIES. COORDINATE LOCATIONS WITH OWNER.
  - ⑬ PROVIDE (4) #1/0, #86 IN 1-1/2" CONDUIT FROM VACUUM CONTROL TO 150A/3P DISCONNECT IN NEMA 3R ENCLOSURE TO EACH VACUUM PUMP.



**SABER ENGINEERING**  
2823 South Tryon Street  
Charlotte, North Carolina  
tel 704.373.0068

Project  
Sam's Mart  
E. Independence Blvd.  
Indian Trail, NC 28097

Owner  
Sam's Mart  
2823 South Tryon Street  
Charlotte, NC 28203  
tel 704.373.0068

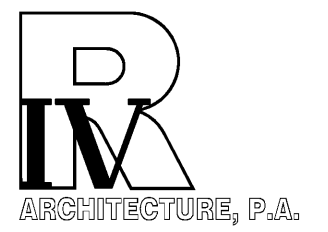
Site 280  
28203  
Suite 200  
Matthews, NC 28105

MECHANICAL ELECTRICAL

www.sabereng.com

PROFESSIONAL ENGINEER  
KIM M. MORRISON  
April 30, 2017  
FIRM NUMBER = C-2130

Sam's Express CAR WASH



124 Floyd Smith Dr  
Suite 375  
Charlotte, NC 28262  
Tel - 704 - 688-7500

7301 Rivers Avenue  
Suite 188  
North Charleston, SC 29406  
Tel - 843 - 531-6848

www.R4architecture.com

Revision	Date
----------	------

Drawn By Saber  
Checked By Saber  
Issue Date 07-05-17  
Project No 160345

Sheet Title  
ELECTRICAL  
POWER PLAN

Sheet Number  
**E201**