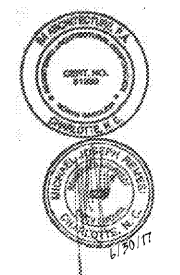


Project
Sam's Mart
E. Independence Blvd.
Indian Trail, NC 28097

Owner
Sam's Mart
793 Council Place
Suite 100
Matthews, NC 28105



124 Floyd Smith Dr
Suite 375
Charlotte, NC 28262
Tel - 704 - 688-7500

2000 Sam Rittenburg Blvd
Suite 116
Charleston, SC 29407
Tel - 843 - 531-6848

www.R4architecture.com

Revision **Date**

Drawn By TRB

Checked By MJR

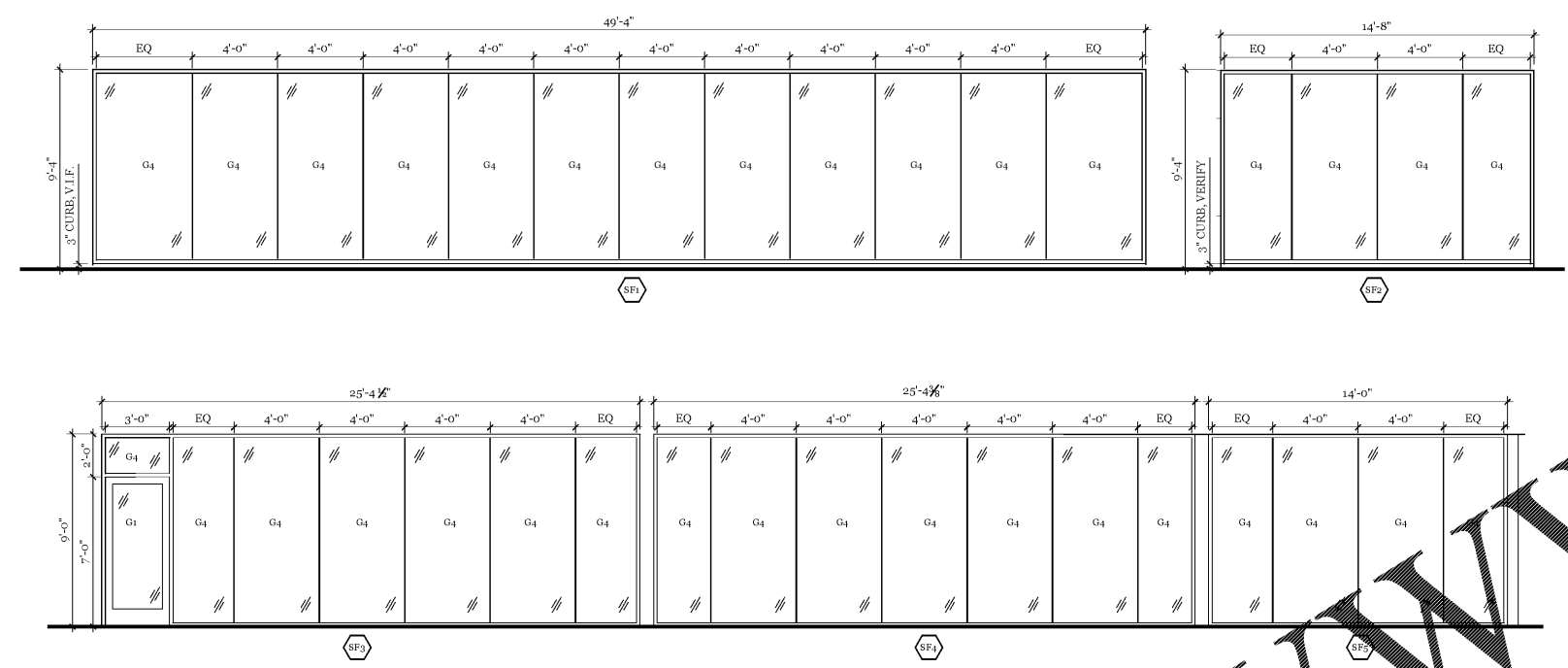
Issue Date 06-30-17

Project No 160345

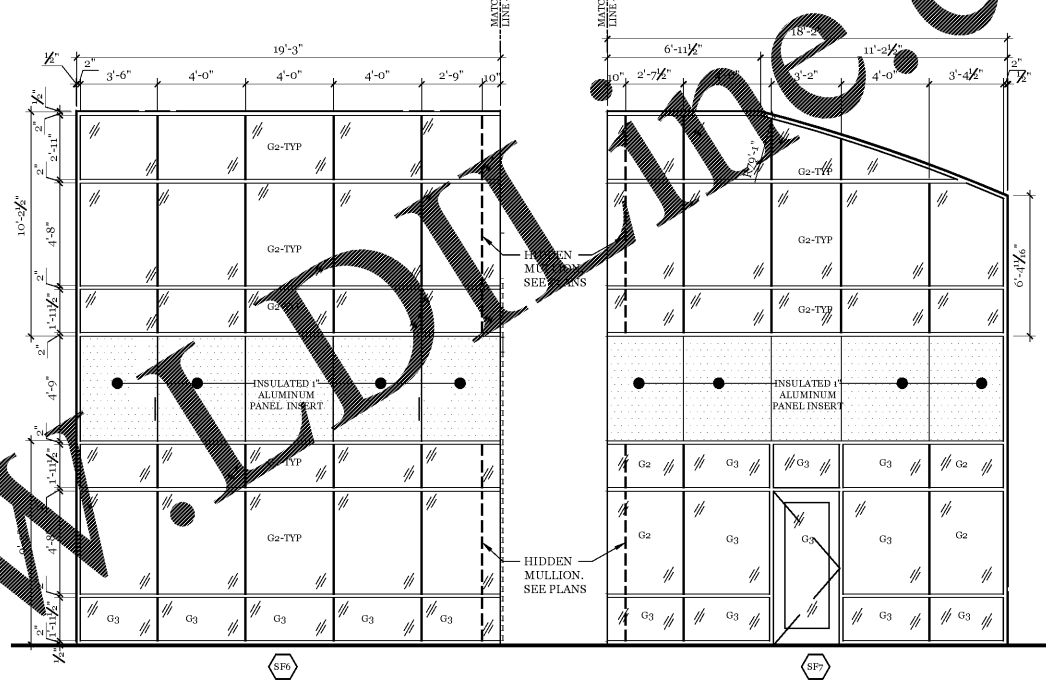
Sheet Title
WINDOW & DOOR
ELEVATIONS, NOTES
& SCHEDULES

Sheet Number

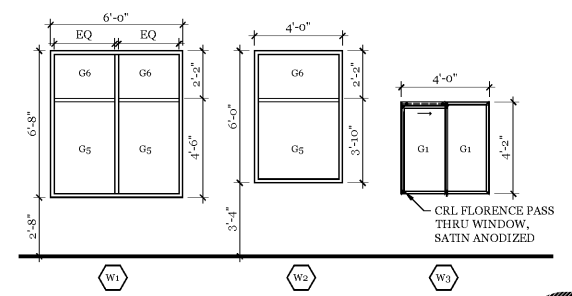
A600



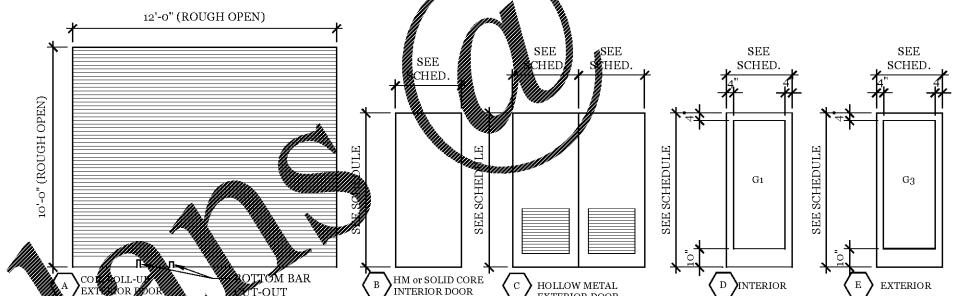
Storefront Elevations
1/4" = 1'-0"



Door Frame Type Elevations
1/4" = 1'-0"



Window Elevations
1/4" = 1'-0"



Door Type Elevations
1/4" = 1'-0"

No.	Room Name	Size	Door	Material	Manufacturer	Glass	Frame	Notes
01	Wash Bay	12'-0" x 10'-0" (ROUGH OPEN)	A	Aluminum	Wedge Dalton		Aluminum	Model 900 Clear Anodized Aluminum Slat No. 17. Provide 8" Bottom Bar. GC coordinate Bottom Bar Cut-out for wash track. Provide exterior mounted lock.
02	--	Not Used						
03	Wash Bay	3'-0" x 7'-0" x 1 3/4"	D	Aluminum		G1	Aluminum	Deadbolt lock must meet ADA, See DOOR and WINDOW NOTES #6
04	Viewing Corridor	3'-0" x 7'-0" x 1 3/4"	E	Aluminum		G3	Aluminum	Deadbolt lock must meet ADA, See DOOR and WINDOW NOTES #6
05	Office	3'-0" x 7'-0" x 1 3/4"	B	HPL	Marlite	2*	HM	Wilsonart Williamsburg Cherry. * Electrified hardware allows free ingress/egress with loss of power.
06	Equipment Room	3'-0" x 7'-0" x 1 3/4"	B	HPL	Marlite	3	HM	Wilsonart Williamsburg Cherry.
07	Equipment Room	3'-0" x 8'-0" x 1 3/4"	C	HM	CECO	4*	HM	Imperial, Louvers to include bug screen. Paint Sherwin Williams Pro Industrial Acrylic Coating Glass door & frame. Verify Active vs. Inactive leaf with owner. * Electromechanical Lockset reverts to mechanical operation with free egress and key operated ingress.
08	Men's Room	3'-0" x 7'-0" x 1 3/4"	B	HPL	Marlite	5	HM	Wilsonart Williamsburg Cherry, Provide ADA Accessible Men/Women Signage
09	Women's Room	3'-0" x 7'-0" x 1 3/4"	B	HPL	Marlite	5	HM	Wilsonart Williamsburg Cherry, Provide ADA Accessible Men/Women Signage
10	Lounge	3'-0" x 7'-0" x 1 3/4"	E	Aluminum		G3	Aluminum	Deadbolt lock must meet ADA, See DOOR and WINDOW NOTES #6
11	Electrical	3'-0" x 8'-0" x 1 3/4"	B	HM	CECO	6*	HM	Paint Sherwin Williams Pro Industrial Acrylic Coating Glass door and frame. * Electrified hardware allows free ingress/egress with loss of power.

DOOR AND WINDOW NOTES

- ALUMINUM MATERIAL FOR DOORS AND STOREFRONT FRAMES SHALL BE STANDARD COMMERCIAL GRADE EXTRUDED SHAPES WITH ANODIZED ALUMINUM FINISH. ALUMINUM GRADE AA ALLOY 6063-T5. THE BOTTOM STILE OF THE DOOR SHALL BE A MIN OF 10" OR MATCHING SOLID PANEL STRIKE BE INSTALLED TO ALLOW WHEELCHAIR FOOTREST TO STRIKE THE DOOR WITHOUT CREATING A HAZARD.
- HOLLOW METAL DOORS SHALL BE 18 GA. STEEL WITH INSULATED CORES.
- HOLLOW METAL FRAMES SHALL BE 16 GA. W/SEALANT ALL AROUND BETWEEN FRAME AND ADJACENT SURFACE.
- UNLESS NOTED OTHERWISE, PROVIDE ALUMINUM THRESHOLD AND WEATHER SEALS AT ALL EXTERIOR DOORS.
- ALL STEEL DOORS AND FRAMES TO MEET STEEL DOOR INSTITUTE SD100 SPECIFICATIONS.
- ALUMINUM FRAME - COORDINATE FRAME CONSTRUCTION AND REINFORCING REQUIREMENTS WITH DOOR/FRAME HARDWARE.

GLASS SCHEDULE

G1- 1/4" CLEAR TEMPERED GLASS
G2- 1" INSULATED CLEAR
G3- 1" INSULATED CLEAR TEMPERED GLASS
G4- 1/2" CLEAR TEMPERED BUTT GLAZED
G5- 1" INSULATED GRAY TINT
G6- 1" INSULATED SPANDREL GLASS, COLOR WARM GRAY

WINDOW AND DOOR NOTES

- ALUMINUM STOREFRONT TO BE CLEAR ANODIZED ALUMINUM
- ALUMINUM STOREFRONT BASED ON KAWNEER TRIFAB V6451T SSG OR WEATHERSEAL SYSTEMS.
- ALL GLAZING SHALL COMPLY AS INDICATED ON COMCHECK ON SHEET G00:
U-FACTOR: MINIMUM - 0.650
SHGC: MAXIMUM - 0.40

DOOR HARDWARE SETS:

HDW-1: ALUMINUM CURTAIN WALL ENTRANCE DOORS
1 set PIVOT HINGES BY KAWNEER
1 ADAMS-RITE DEAD BOLT W/CONSTRUCTION CORE
1 LOCK TUMBLER CORE BY OWNER
1 set STANDARD PUSH, PULL HARDWARE
1 DOOR CLOSER BY KAWNEER
1 set WEATHER SEAL AND BOTTOM SWEEP
1 H.C. ALUMINUM THRESHOLD

HDW-2 OFFICE
1-1/2 PR. HINGES-MCKINNEY 72714, 4 1/2"X 4 1/2", 26D
1 PASSAGE SET WITH DUMMY TRIM ON CORRIDOR SIDE. SCHLAGE SATURN SERIES. 626
1 ELECTRIC STRIKE (FAIL SAFE)
1 CARD READER (SEE NOTES)
1 MOP PLATE-IVES .037 8X34 US32D
1 MOP PLATE-IVES .037 6X34 US32D
1 DOOR CLOSER-SARGENT EN1230-0 XZ SN
3 SILENCERS
1 FLOOR STOP

HDW-3: EQUIPMENT ROOM (INTERIOR)
1-1/2 PR. HINGES-MCKINNEY 72714, 4 1/2"X 4 1/2", 26D
1 LOCKSET - SIMPLEX 11021 CYLINDRICAL LOCK, COMBINATION ENTRY w/KEY OVERRIDE
1 KICKPLATE-IVES .037 8X34 US32D
1 MOP PLATE-IVES .037 8X34 US32D
1 DOOR CLOSER-SARGENT EN1230-0 XZ SN
3 SILENCERS
1 FLOOR STOP
1 THRESHOLD - PEMKO 115 INTERLOCKING

HDW-4: EQUIPMENT ROOM (EXTERIOR DOUBLE*)
* Note hardware for Active VS. Inactive Leaf
Ea. Leaf: CONT. STAINLESS STEEL PIANO HINGE/304 STAINLESS
Active: ELECTRIC POWER TRANSFER (EPT) HINGE - MCKINNEY
Active: ELECTROMECHANICAL FAIL SAFE LOCKSET w/LEVER HANDLES
1 CARD READER (SEE NOTES)
Inactive: MORTISE STRIKE RECEIVER SET FOR LOCKSET
Ea. Leaf: KICKPLATE-IVES .037, 8X42 US32D
Active: DOOR CLOSER-SARGENT EN350 PS X SN
Inactive: TOP/BOTTOM SURFACE BOLT
Inactive: OVERHEAD STOP W/HOLD-OPEN
1 SET WEATHER SEAL AND BOTTOM SWEEP
1 ALUM. THRESHOLD
Active: FULL HEIGHT ASTRAGAL

HDW-5: RESTROOMS
1-1/2 PR. HINGES-MCKINNEY 72714, 4 1/2"X 4 1/2", 26D
1 PASSAGE SET - SCHLAGE SATURN SERIES. 626
1 DEADBOLT - SCHLAGE B751626 - ADA
1 KICKPLATE-IVES .037 8X34 US32D
1 MOP PLATE-IVES .037 6X34 US32D
1 DOOR CLOSER-SARGENT EN1230-0 XZ SN
3 SILENCERS
1 FLOOR STOP

HDW-6: ELECTRICAL ROOM
2 PR. HINGES-MCKINNEY 72714, 4 1/2"X 4 1/2", 26D
1 PANIC BAR WITH RIGID OUTSIDE LEVER
1 ELECTRIC STRIKE (FAIL SAFE)
1 CARD READER (SEE NOTES)
1 KICKPLATE-IVES .037 8X34 US32D
1 DOOR CLOSER-SARGENT EN1230-0 XZ SN
3 SILENCERS
1 FLOOR STOP
1 THRESHOLD - PEMKO 115 INTERLOCKING

HARDWARE AND KEYING NOTES:

- ALL REQUIRED EXIT DOORS SHALL BE OPERABLE FROM THE INTERIOR WITHOUT THE USE OF KEY, TOOL, SPECIAL KNOWLEDGE, OR EFFORT.
- LOCKS SHALL MATCH OWNERS KEYING SYSTEM. COORDINATE WITH OWNER PROVIDED CONSTRUCTION CYLINDERS.
- SET UP LOCKS WITH SCHLAGE SCI KEYWAY CYLINDERS. OWNER WILL RE-KEY INTERIOR CORED, (SCHLAGE) AND FURNISH A MEDECO CORE AND HOUSING FOR THE EXTERIOR DOORS.
- PRODUCTS - U.N.O. IN HARDWARE SET
4.1. HINGES: HAGER, MCKINNEY, STANLEY
4.2. LATCH/LOCK SETS: SHLAGE SATURN SERIES
4.3. CYLINDERS: SCHLAGE "C"
4.4. CLOSERS: LCN, SARGENT, OR EQUAL
4.5. STOPS: IVES, ROCKWOOD, BALDWIN
5. CARD READER -
5.1. SEMAC ACCESS CONTROL SYSTEM, CHYU TECHNOLOGY CO. LTD.
5.2. VENDOR COORDINATE REQUIRED NUMBER AND LOCATION OF POWER SUPPLIES WITH OWNER.
5.3. VENDOR COORDINATE LOCATION OF ACCESS CONTROL CENTRAL PANEL WITH OWNER.
6. ELECTRIC STRIKE - VENDOR COORDINATE REQUIRED NUMBER, TYPE, AND LOCATION OF POWER SUPPLIES.