

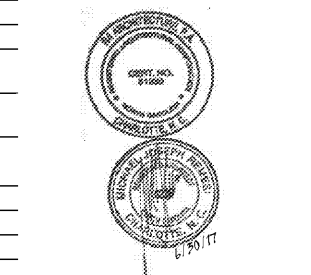
Interior Finish Schedule

| No. | Room Name | Floor | Base | Walls | | | | | | | | Ceiling | | Notes |
|-----|------------------|-----------|------|------------|---------|------------|---------|------------|---------|------------|---------|---------|------------------------|--|
| | | | | UP | | DOWN | | RIGHT | | LEFT | | Height | Finish | |
| | | | | Material | Finish | Material | Finish | Material | Finish | Material | Finish | | | |
| 101 | Office | CS-1 | 1x6 | GB | P-2/DP | Glass & GB | P-2/DP | Glass & GB | P-2/DP | GB | P-2/DP | 10'-0" | AC-1 | Diamond Plate Wainscot 1x6 Base and 1x4 Chair Rail, paint grade Poplar |
| 102 | Viewing Corridor | CS-1 | 1x6 | Glass & GB | P-1 | GB | P-1/DP | GB | P-1/DP | - | - | 12'-0" | Exposed Structure, P-5 | Diamond Plate Wainscot 1x6 Base and 1x4 Chair Rail, paint grade Poplar |
| 103 | Equipment Room | Conc Seal | | GB / PW | P-2 | CMU | P-2 | GB & PW | P-2 | GB & PW | P-2 | 12'-0" | Exposed Structure | Plywood to 8'-0" |
| 104 | Women | CS-1 | T-2 | Durock | T-1,2,3 | Durock | T-1,2,3 | Durock | T-1,2,3 | Durock | T-1,2,3 | 9'-0" | GB, P-2 | See 4/A501 for exact tile and location |
| 105 | Men | CS-1 | T-2 | Durock | T-1,2,3 | Durock | T-1,2,3 | Durock | T-1,2,3 | Durock | T-1,2,3 | 9'-0" | GB, P-2 | See 4/A501 for exact tile and location |
| 106 | Electric Room | Conc Seal | | GB / PW | P-2 | CMU | P-2 | GB | P-2 | GB | P-2 | 12'-0" | GB, P-2 | Plywood to 8'-0" |
| 107 | Lounge | CS-1 | 1x6 | Glass&GB | P-1 | Glass & GB | P-1 | GB | P-1/DP | Glass & GB | P-1 | 27'-0" | Exposed Structure, P-6 | 1x6 Base and 1x4 Chair Rail, paint grade Poplar |
| 108 | Wash Bay | Conc P-4 | | Glass&CMU | QL | Glass&PW | QL | CMU | QL | CMU | QL | 12'-0" | QL | Curved roof above, exposed structure height varies. |
| | Maint. Mezz. | PW | | GB | P-2 | GB | P-2 | GB | P-2 | GB | P-2 | +8'-0" | Exposed Structure, P-2 | |

NOTE: WALL AND CEILING FINISHES SHALL COMPLY WITH 803, FLOORING FINISHES SHALL COMPLY WITH 804 OF NCBC. PER 1210.2 OF NCBC, WALLS AND PARTITIONS WITHIN 2 FEET OF URINALS AND TOILETS SHALL HAVE A SMOOTH, HARD, NONABSORBENT SURFACE TO A HEIGHT OF 4 FEET ABOVE FLOOR.

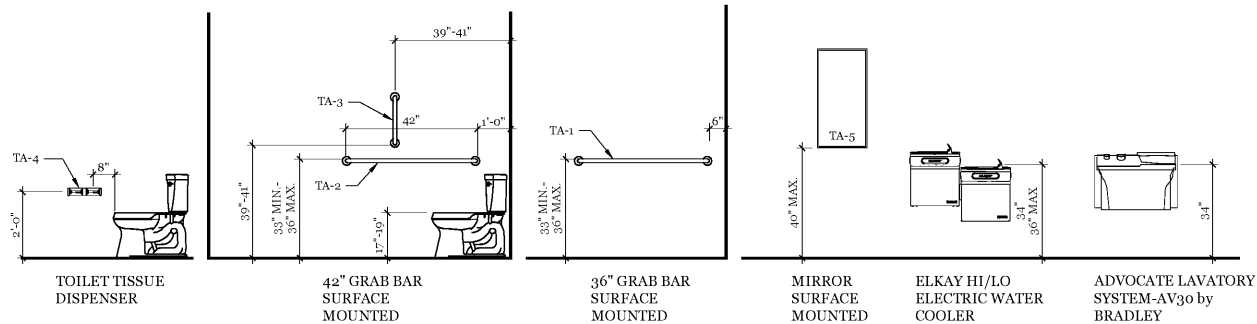
Project
Sam's Mart
E. Independence Blvd.
Indian Trail, NC 28097

Owner
Sam's Mart
793 South Place
Suite 200
Matthews, NC 28105



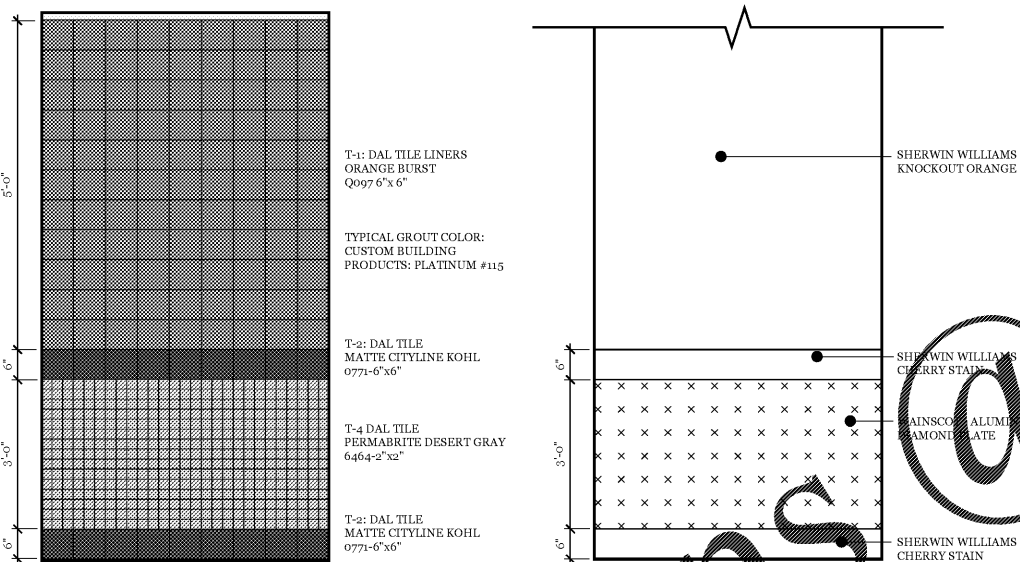
Interior Finishes

| Key | Manufacturer | Material | Product No. | Color | Notes |
|----------|-------------------------|------------------------|--|------------------------|--|
| P-1(INT) | Sherwin Williams | Paint | Pro Industrial Acrylic Coating | Knockout Orange #6885 | Eggshell |
| P-2(INT) | Sherwin Williams | Paint | Pro Industrial Acrylic Coating | | Eggshell |
| P-3(INT) | Sherwin Williams | Stain | Pro Industrial Acrylic Coating | SW 3110 Classic Cherry | Stain for wood doors and 2 coats sealer |
| P-4(INT) | ICI Paints | Paint | A438 Epoxy Floor Paint | Gray | 36" Strip length color wash panel on passenger side |
| P-5(INT) | Sherwin Williams | Paint | Pro Industrial Water Based Catalysed Epoxy | Purple-PMS 266 | Painted exposed wood and metal ceilings |
| P-6(INT) | Sherwin Williams | Paint | Pro Industrial Water Based Catalysed Epoxy | Red-PMS 184 | Painted exposed metal ceiling |
| DP | | Aluminum Diamond Plate | | | Wainscot with OSB Backer to 3'-0", See 4/A502 |
| PW | | 1/2" Marine Plywood | | | |
| CS-1 | | Stained Concrete | | | |
| CS-1 | Kemiko | Stained Concrete | SS1202 Epoxy Concrete Stain | Red | Viewing corridor and lounge |
| MAT | American Floor Products | Recessed Walk Off Mat | 4' x 4' x 1/2" 284 Mill Finish | Desert Gray | Recessed walk-off mat at entry of viewing corridor |
| AC-1 | Armstrong or Eq. | Acoustical Ceiling | 2x2 Cortega | White | Square edge tile/standard 1" grid |
| CAB-1 | Wilsonart | Cabinet | 936-07 Williamsburg Cherry | Williamsburg Cherry | Cabinets at office, sales counter and lounge & doors |
| CN-1 | Wilsonart | Counter Top | 3047-ML Chicory Cream | Chicory Cream | Solid surface material |
| T-1 | Dal Tile | Liners | 0771 - 6" x 6" | Orange Burst | |
| T-2 | Dal Tile | Modern Dimensions | 0771 - 6" x 6" | Matte Cityline Kohl | Alt: 0171 Semi-Gloss Cityline Kohl |
| T-3 | Dal Tile | Modern Dimensions | 0771 - 6" x 6" | Matte Cityline Kohl | Alt: 0171 Semi-Gloss Cityline Kohl |
| T-4 | Dal Tile | PermaBrites | 6464 - 2" x 2" | Desert Gray | |
| QL | Octan | Quickliner | Quickliner & Snap-Trim | | See Manuf. info. for installation requirements. Provide Blocking as required |



Typical Fixture Mounting Heights

N.T.S.



RESTROOM Interior Elevation: Toilet-Typical Tile Pattern at Toilet Walls

N.T.S.

Toilet Accessory Schedule

| TA-# | Item | Manufacturer | Size | Remarks |
|------|------------------------------|---------------------|---------------|---|
| TA-1 | Grab bar | Bobrick B-5507 x 36 | 36" Long | Anchor securely, 250 pound load |
| TA-2 | Grab bar | Bobrick B-5507 x 42 | 42" Long | Anchor securely, 250 pound load |
| TA-3 | Grab bar | Bobrick B-5507 x 18 | 18" Long | Mount vertically anchor securely, min. 250 pound load |
| TA-4 | Toilet tissue roll dispenser | Bobrick B-265 | | -- |
| TA-5 | Mirror | Bobrick B-165 1836 | 18" W x 36" H | N/A |

RESTROOM NOTES:

- SEE 5/A501 FOR ACCESSORY MOUNTING HEIGHTS.
- LAVATORY FAUCET TO BE AN AUTOMATIC HARDWIRED SENSOR. URINAL AND TOILETS TO BE MANUAL.
- THE RESTROOM LAYOUT IS BASED ON AND COMPLIES WITH THE "AMERICAN WITH DISABILITIES ACT" LATEST REGULATIONS. PLEASE NOTE THE FOLLOWING SECTIONS:
 - 4.16.5 FLUSH CONTROLS. FLUSH CONTROLS SHALL BE HAND OPERATED OR AUTOMATIC AND SHALL COMPLY WITH 4.27.4. CONTROLS FOR FLUSH VALVES SHALL BE MOUNTED ON THE WALL SIDE OF TOILET AREAS NO MORE THAN 44" (1120mm) ABOVE THE FLOOR.
 - 4.19.4 EXPOSED PIPES AND SURFACES. WATER AND DRAIN PIPES UNDER LAVATORIES SHALL BE INSULATED OR OTHERWISE CONFIGURED TO PROTECT AGAINST CONTACT. THERE SHALL BE NO SHARP OR ABRASIVE SURFACES UNDER LAVATORIES.
 - 4.19.5 FAUCETS. FAUCETS SHALL COMPLY WITH 4.27.4. LEVER-OPERATED PUSH-TYPE AND ONICALLY CONTROLLED MECHANISMS ARE EXAMPLES OF PTABLE DESIGNS. SELF-CLOSING VALVES ARE ALLOWED IF THE FAUCET REMAINS OPEN FOR AT LEAST 10 SECONDS.
 - 4.26.2 GRAB BARS. OUTSIDE DIAMETER - MIN. 1-1/4", MAX 1-1/2". SPACE BETWEEN WALL AND GRAB BAR - 1-1/2".
 - 4.27.4 OPERATION, CONTROLS AND OPERATING MECHANISMS SHALL BE OPERABLE WITH ONE HAND AND SHALL NOT REQUIRE TIGHT GRASPING, PINCHING, OR TWISTING OF THE WRIST. THE FORCE REQUIRED TO ACTIVATE CONTROLS SHALL BE NO GREATER THAN 5 LBF (22.2N).

Drawn By TRB
Checked By MJR
Issue Date 06-30-17
Project No 160345

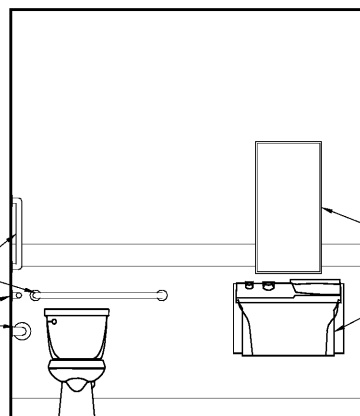
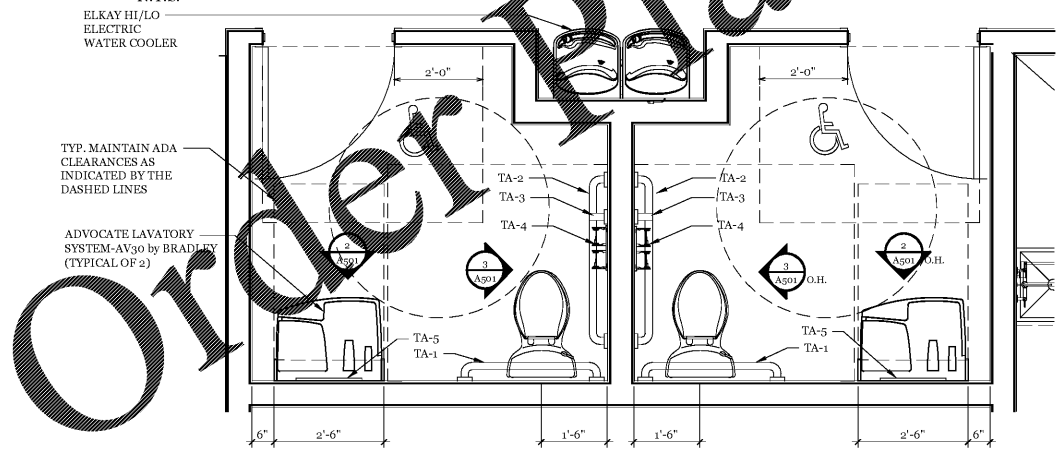
Sheet Title
ENLARGED PLANS
INTERIOR ELEVATIONS
& SCHEDULES

Sheet Number

A501

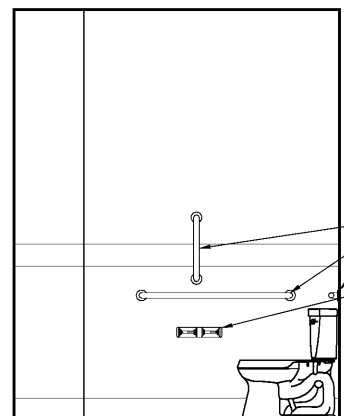
Enlarged Toilet Room Plan

N.T.S.



Enlarged Toilet Room Elevation

1/2" = 1'-0"



Enlarged Toilet Room Elevation

1/2" = 1'-0"

ELKAY HI/LO