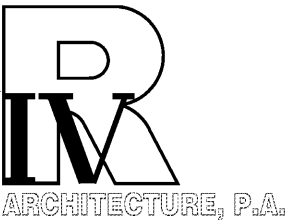
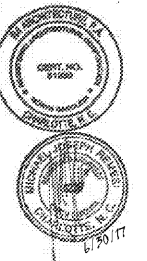


**Project**  
 Sam's Mart  
 E. Independence Blvd.  
 Indian Trail, NC 28097

**Owner**  
 Sam's Mart  
 793 Council Place  
 Suite 100  
 Matthews, NC 28105



**124 Floyd Smith Dr**  
**Suite 375**  
**Charlotte, NC 28262**  
 Tel - 704 - 688-7500

**2000 Sam Rittenburg Blvd**  
**Suite 116**  
**Charleston, SC 29407**  
 Tel - 843 - 531-6848

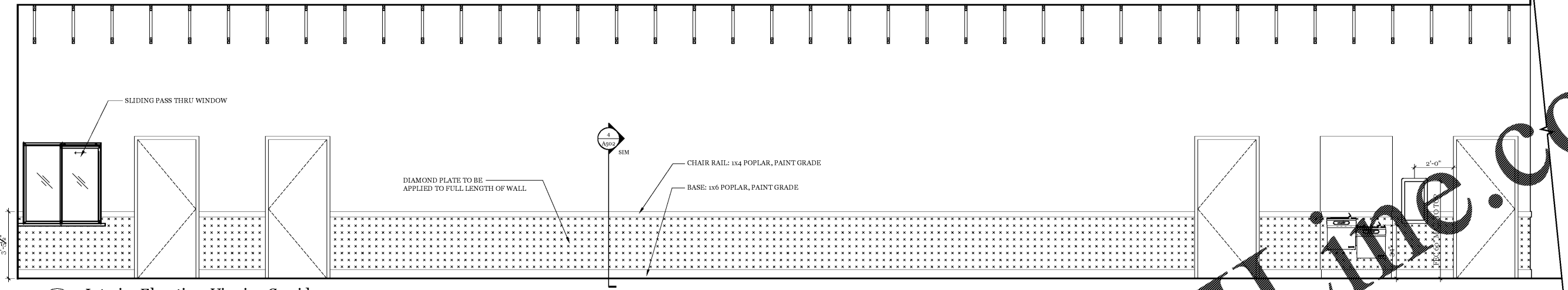
[www.R4architecture.com](http://www.R4architecture.com)

Revision	Date

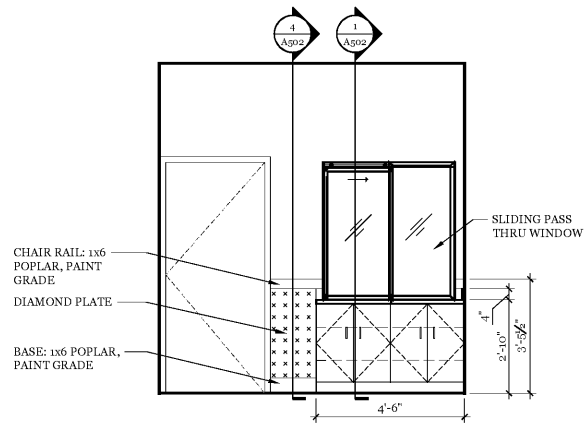
<b>Drawn By</b>	TRB
<b>Checked By</b>	MJR
<b>Issue Date</b>	06-30-17
<b>Project No</b>	160345

**Sheet Title**  
 ENLARGED PLANS  
 & INTERIOR  
 ELEVATIONS

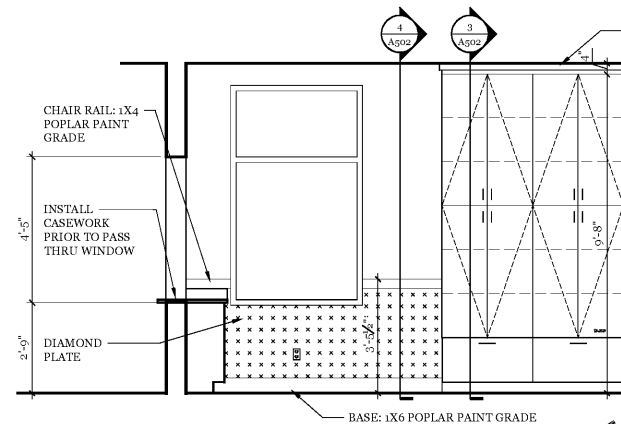
**Sheet Number**  
**A500**



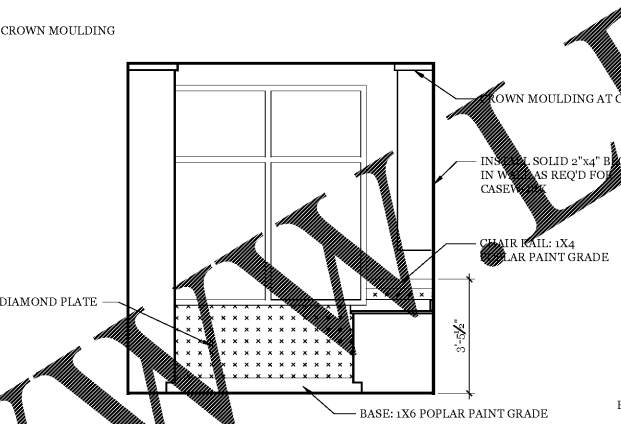
**7 Interior Elevation: Viewing Corridor**  
 3/8" = 1'-0"



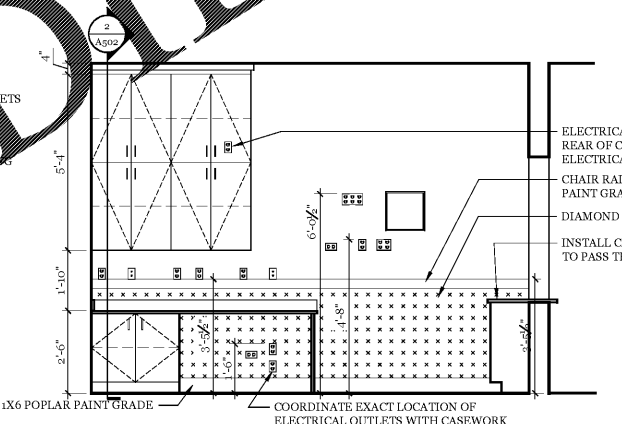
**3 Interior Elevation: Office**  
 3/8" = 1'-0"



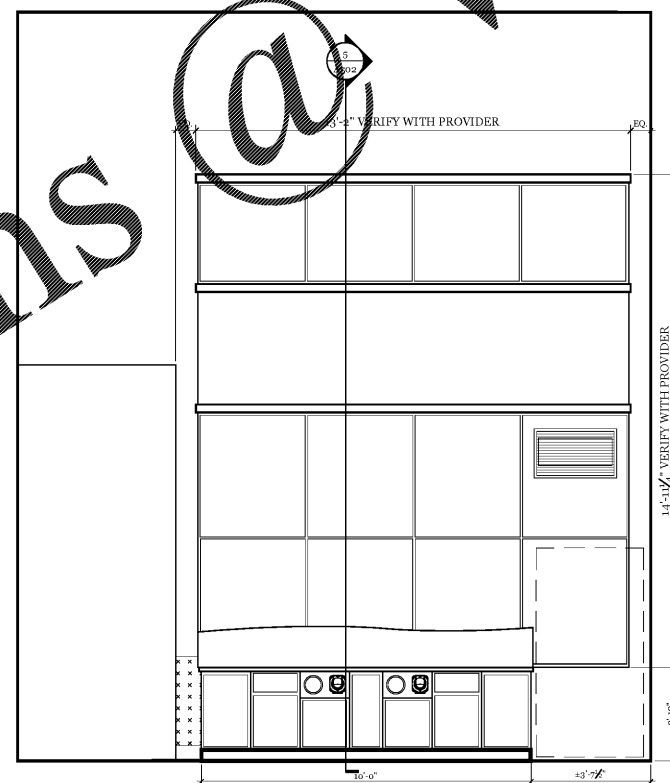
**4 Interior Elevation: Office**  
 3/8" = 1'-0"



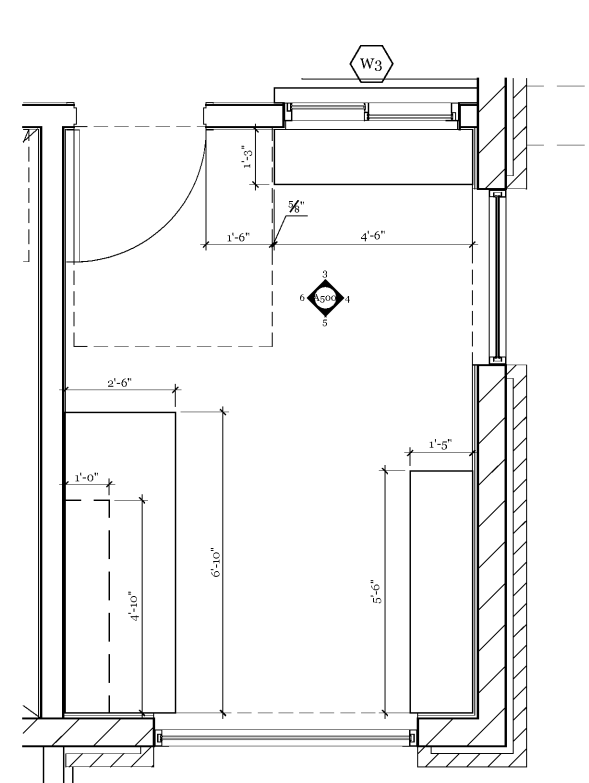
**5 Interior Elevation: Office**  
 3/8" = 1'-0"



**6 Interior Elevation: Office**  
 3/8" = 1'-0"



**2 Interior Elevation: Lounge**  
 3/8" = 1'-0"



**Enlarged Office Plan**  
 1/2" = 1'-0"

**CASEWORK NOTES:**  
 CASEWORK DESIGN,  
 CONSTRUCTION AND  
 INSTALLATION BY 809  
 DESIGN, GC SHALL  
 COORDINATE.

Order Plans

WWW.DELINE.COM

ALL RIGHTS RESERVED. NO PART OF THIS DOCUMENT IS TO BE REPRODUCED OR TRANSMITTED IN ANY FORM OR BY ANY MEANS, ELECTRONIC OR MECHANICAL, INCLUDING PHOTOCOPYING, RECORDING, OR BY ANY INFORMATION STORAGE AND RETRIEVAL SYSTEM. WITHOUT THE WRITTEN PERMISSION OF THE ARCHITECT.