

Project
 Sam's Mart
 E. Independence Blvd.
 Indian Trail, NC 28097

Owner
 Sam's Mart
 793 Louch Place
 Suite 100
 Matthews, NC 28105



R4
 ARCHITECTURE, P.A.

124 Floyd Smith Dr
 Suite 375
 Charlotte, NC 28262
 Tel - 704 - 688-7500

2000 Sam Rittenburg Blvd
 Suite 116
 Charleston, SC 29407
 Tel - 843 - 531-6848

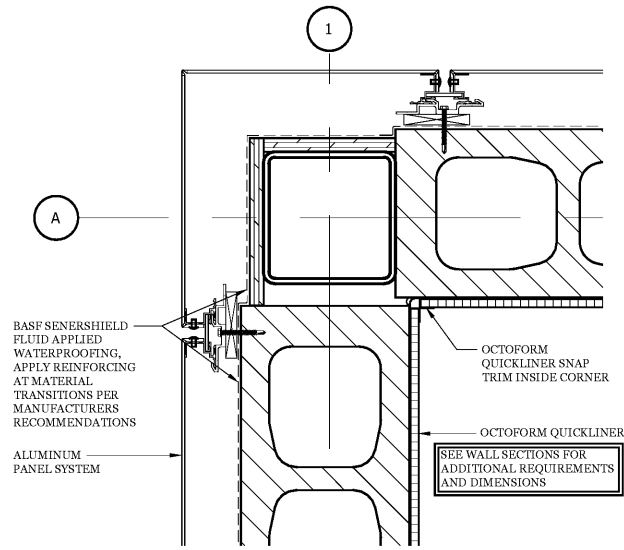
www.R4architecture.com

Revision Date

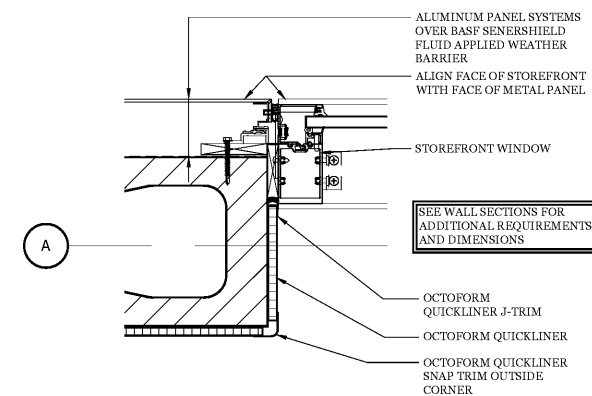
Drawn By TRB
Checked By MJR
Issue Date 06-30-17
Project No 160345

Sheet Title
 PLAN DETAILS

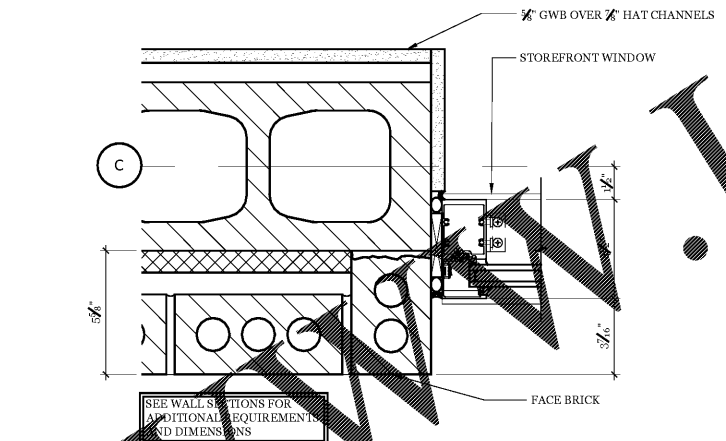
Sheet Number
A425



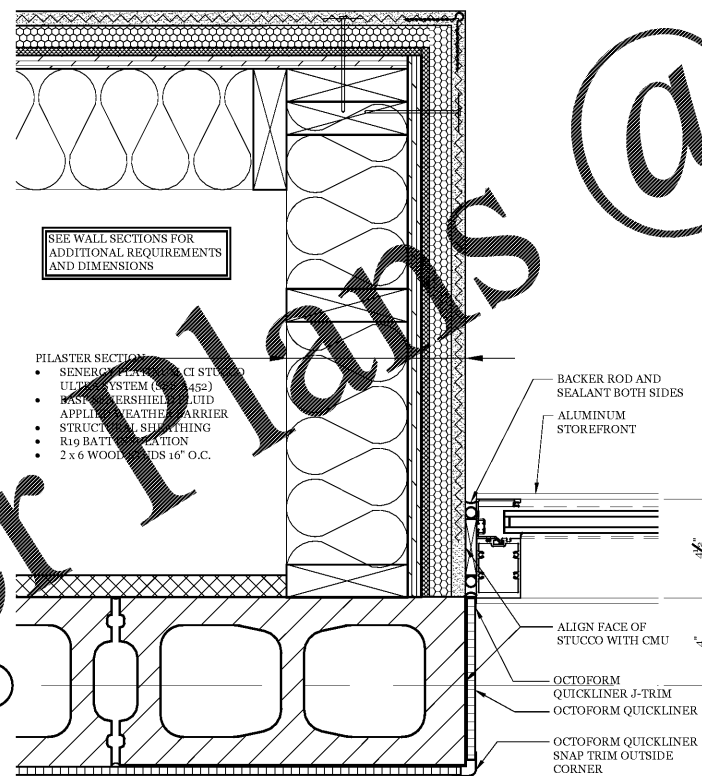
10 **DETAIL: CMU - STEEL COLUMN CORNER**
 3" = 1'-0"



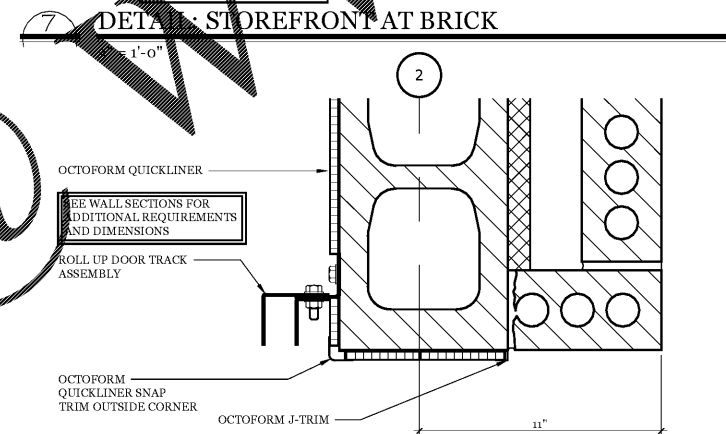
9 **DETAIL: STOREFRONT AT ALUM. PANELS**
 3" = 1'-0"



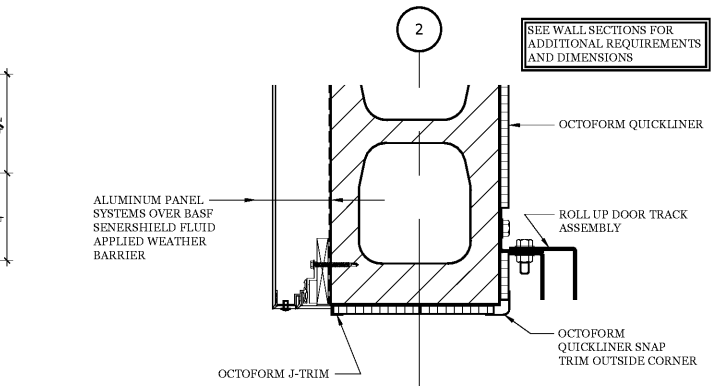
7 **DETAIL: STOREFRONT AT BRICK**
 3" = 1'-0"



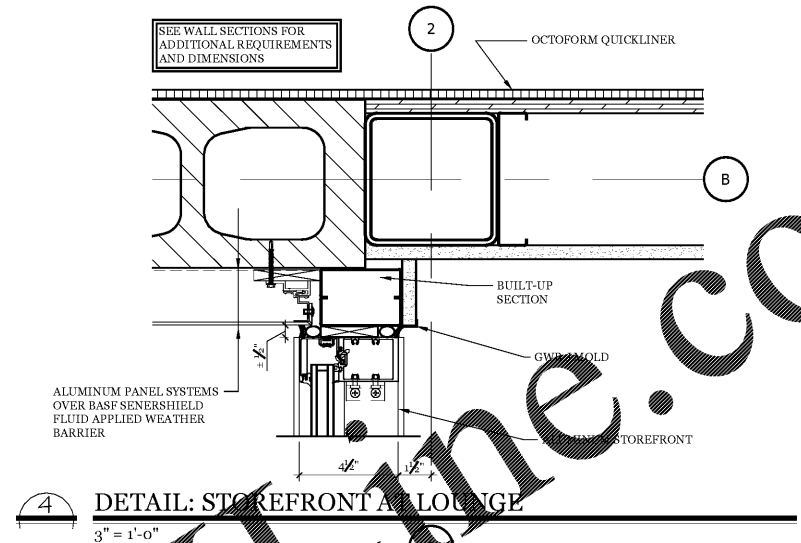
8 **DETAIL: STOREFRONT AT STUCCO PILASTER**
 3" = 1'-0"



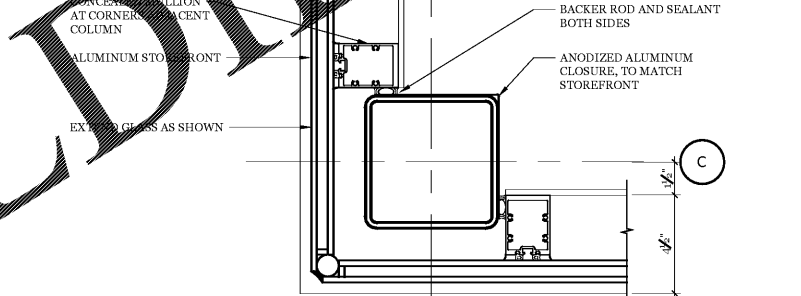
6 **DETAIL: ROLL-UP DOOR AT BRICK**
 3" = 1'-0"



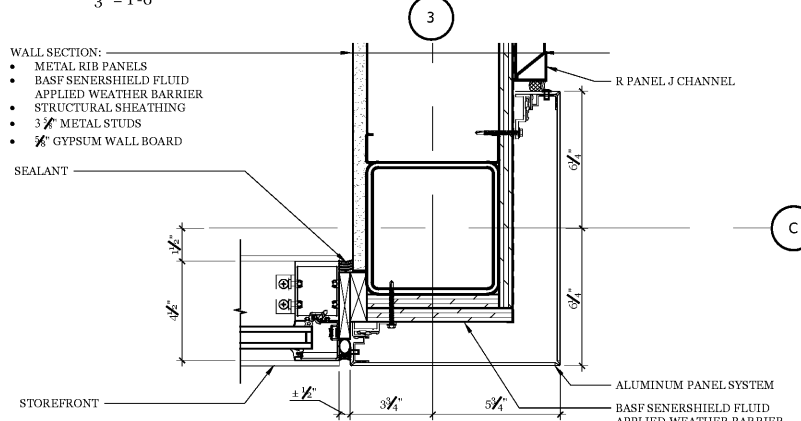
5 **DETAIL: ROLL-UP DOOR AT ALUMINUM PANELS**
 3" = 1'-0"



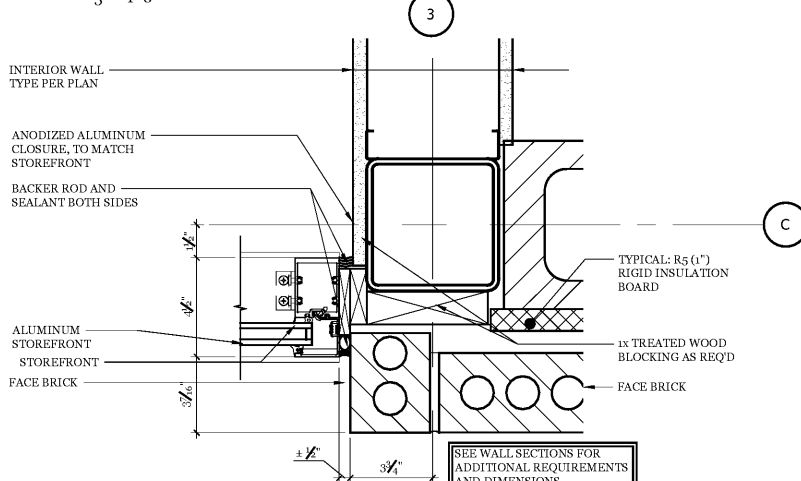
4 **DETAIL: STOREFRONT AT LOUNGE**
 3" = 1'-0"



3 **DETAIL: STOREFRONT CORNER AT LOUNGE**
 3" = 1'-0"



2 **DETAIL: STOREFRONT AT ALUMINUM PANELS**
 3" = 1'-0"



1 **DETAIL: STOREFRONT AT BRICK**
 3" = 1'-0"

Order Plans @