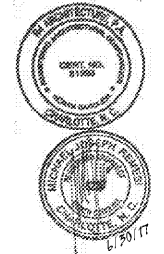


Project
Sam's Mart
 E. Independence Blvd.
 Indian Trail, NC 28097

Owner
 Sam's Mart
 933 Church Place
 Suite 200
 Matthews, NC 28105



R4
 ARCHITECTURE, P.A.

124 Floyd Smith Dr
Suite 375
Charlotte, NC 28262
 Tel - 704 - 688-7500

2000 Sam Rittenburg Blvd
Suite 116
Charleston, SC 29407
 Tel - 843 - 531-6848

www.R4architecture.com

Revision Date

Drawn By TRB
Checked By MJR
Issue Date 06-30-17
Project No 160345

Sheet Title
 LIFE SAFETY
 PLAN

Sheet Number
A001

PLUMBING CALCULATION
LOUNGE A-3: 21.8 PEOPLE: (LOUNGE) MALE W.C. = 1 PER 125 PEOPLE / LAV. = 1 PER 200 PEOPLE = 21.8 / 125 = 0.17 W.C. & 21.8 / 200 = 0.11 LAV.
FEMALE W.C. = 1 PER 65 PEOPLE / LAV. = 1 PER 200 PEOPLE = 21.8 / 65 = 0.34 W.C. & 21.8 / 200 = 0.11 LAV.
DRINKING FOUNTAIN = 1 PER 500 OR 0.04
BUSINESS: 6.47 PEOPLE (OFFICE, CORRIDOR, TOILET ROOMS) MALE/FEMALE W.C. = 1 PER 25 FOR FIRST 50/ LAV. = 1 PER 40 = 3.24/25 = 0.13 W.C. & 3.24/40 = 0.08 LAV
DRINKING FOUNTAIN = 1 PER 100 OR 0.06
STORAGE/MECHANICAL: 2.55 PEOPLE (EQUIPMENT AND ELECTRICAL ROOMS) MALE/FEMALE W.C. = 1 PER 100 / LAV. = 1 PER 100 = 2.55/100 = 0.02 W.C. & 2.55 / 40 = 0.02 LAV
DRINKING FOUNTAIN = 0 REQUIRED
TOTAL REQUIRED FOR THE ABOVE AREAS: FEMALE = 0.49 W.C. & 0.21 LAV MALE = 0.32 W.C. & 0.21 LAV COMBINED DRINKING FOUNTAIN = 0.10
TOTAL PROVIDED FOR THE ABOVE AREAS: FEMALE = 1 W.C. & 1 LAV. MALE = 1 W.C. & 1 LAV. COMBINED DRINKING FOUNTAIN = 2

CONTRACTOR'S NOTES:
 1. THIS PLAN IS AN ILLUSTRATIVE LIFE SAFETY PLAN ONLY. SEE SHEET A-101 FOR ACTUAL FLOOR PLAN FOR DIMENSIONED AND NOTED PLAN FOR CONSTRUCTION PURPOSES-TYP.

DEDICATED MEANS OF EGRESS:
 1. SEE ALSO CIVIL DRAWINGS FOR ADDITIONAL SITE IMPROVEMENTS RELATED TO ACCESSIBLE ACCESS AND EGRESS, AS WELL AS ACCESS TO "PUBLIC WAY"

WALL RATINGS:

---	DRAFTSTOPPING

DEVICE LEGEND AND NOTES

CR	CARD READER
EL	ELECTRIFIED LOCKING HARDWARE
PD	PANIC DEVICE

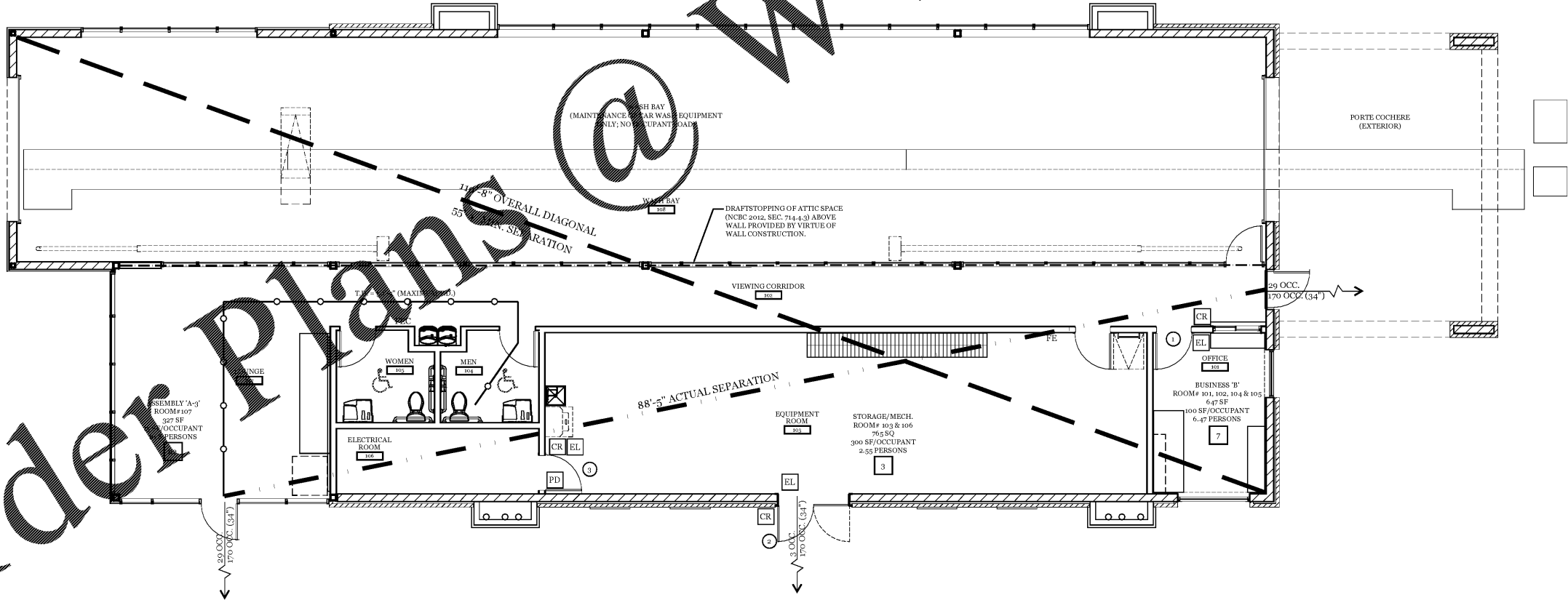
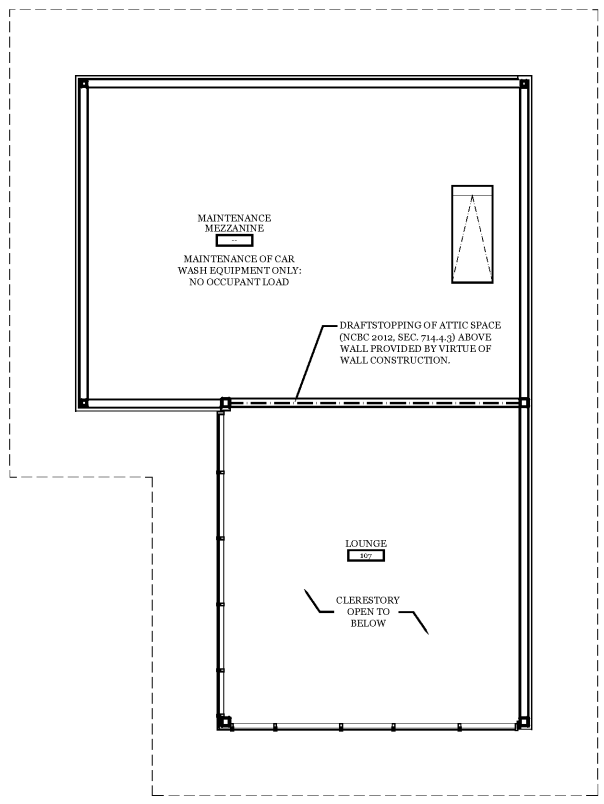
DEVICE GENERAL NOTES:
 1. DEVICES SHOWN FOR LIFE SAFETY PLAN AND INSTALLATION COORDINATION PURPOSES.
 2. CONTRACTOR COORDINATE PERMIT APPLICATION AND INSPECTION REQUIREMENTS FOR LIFE SAFETY DEVICES WITH LOCAL AUTHORITY HAVING JURISDICTION.
 3. DEVICES SHOWN INDICATE OPERATIONAL INTENT OF OPENING. COORDINATE FUNCTIONS WITH HARDWARE SETS ON DOOR OPENING AND HARDWARE SCHEDULE.
 4. COORDINATE HARDWARE, DEVICES AND OPENINGS WITH OWNER, OWNER VENDOR, AND CONTRACTORS AS REQUIRED.
 5. COORDINATE CONNECTIONS AND OPERATIONAL TIE-IN TO BUILDING SERVICES AS REQUIRED.

DOOR OPERATION NOTES

- OFFICE DOOR:
 - CARD READER RELEASES ELECTRIC STRIKE
 - UPON LOSS OF POWER STRIKE FAILS SAFE TO ALLOW FREE INGRESS/EGRESS.
- EQUIPMENT ROOM DOOR:
 - ACTIVE LEAF HAS ELECTROMECHANICAL LOCKSET RELEASED BY CARD READER ON EXTERIOR SIDE
 - INTERIOR LEAF HAS MANUAL FREE EGRESS AT ALL TIMES
 - UPON LOSS OF POWER SET REVERTS TO MANUAL MECHANICAL OPERATION WITH KEY ALONG FROM EXTERIOR
- GENERAL ROOM DOOR:
 - CARD READER RELEASES ELECTRIC STRIKE
 - PANIC DEVICE ALLOWS FREE EGRESS AT ALL TIMES
 - UPON LOSS OF POWER STRIKE FAILS SAFE TO ALLOW FREE INGRESS/EGRESS.

LIFE SAFETY LEGEND:

ROOM #	OCCUPANCY USE TYPE
## SF	ROOMS COUNTED IN OCC.
### SF/OCCUPANT	AREA SQUARE FEET (SF)
## PERSONS	SF/PERSON BY OCCUPANT TYPE
##	LOAD - [AREA/(SF/PERSON)]
##	PLANNED EGRESS OCCUPANT LOAD
## OCC.	OCCUPANCY COUNT
### OCC. (34")	EGRESS CAPACITY (CLEAR WIDTH)
---	OVERALL DIAGONAL OF ALL 1/2 DIMENSION FOR MIN. EGRESS SEPARATION
---	ACTUAL DISTANCE BETWEEN EGRESS
---	MAXIMUM TRAVEL DISTANCE
---	MINIMUM DEAD END CORRIDOR DISTANCE



Life Safety Plan
 3/16" = 1'-0"

Order Plans @

WWW.LDLINE.COM