

PLANT SCHEDULE							
CODE	COMMON NAME	BOTANICAL NAME	QTY.	CALIPER	HEIGHT	SPREAD	COMMENTS
TREES							
FT	ASH GREEN	FRAXINUS PENNSYLVANICA	9		50'-80'	25'-30'	
SO	SHUMARD OAK	QUERCUS SHUMARDII	9	2"	50'-80'	50'-80'	
SHRUBS							
DBH	DWARF BUFORD HOLLY	ILEX COMUTA 'BUFORD NANA'	272	-	4'-6"	4'-6"	

SEEDING SCHEDULE FOR SHOULDERS, SIDE DITCHES & SLOPES (MAX 2:1)

DATE	TYPE	PLANTING RATE
AUG 15-NOV 1	TALL FESCUE	300 #/AC
NOV 1-MAR 1	TALL FESCUE AND ABRUZZI RYE	25 #/AC
MAR 1-APR 15	TALL FESCUE	300 #/AC
APR 15-JUN 30	HULLED COMMON BERMUDA GRASS	25 #/AC
JUL 15-AUG 15	TALL FESCUE AND BROWN TOP MILLET OR SORGHUM-SUDAN HYBRIDS	120 #/AC 35 #/AC 30 #/AC

FOR SLOPES (3:1 TO 2:1)

DATE	TYPE	PLANTING RATE
MAR 1-JUN 1	TALL FESCUE	50 #/AC
MAR 1-JUNE 30	OR ADD WEEPING LOVEGRASS	10 #/AC
MAR 1-JUNE 30	OR ADD HULLED COMMON BERMUDA GRASS	25 #/AC
JUN 1-SEPT 1	TALL FESCUE AND BROWN TOP MILLET OR SORGHUM-SUDAN HYBRIDS	120 #/AC 35 #/AC 30 #/AC
SEPT 1-MAR 1	TALL FESCUE	120 #/AC
(NOV 1-MAR 1)	ADD ABRUZZI RYE	25 #/AC

CONSULT CONSERVATION ENGINEER OR SCS FOR ADDITIONAL INFORMATION CONCERNING OTHER ALTERNATIVES FOR VEGETATION OF DENSER AREAS ABOVE VEGETATION RATES ARE THOSE WHICH DO WELL UNDER LOCAL CONDITIONS. OTHER SEEDING RATE COMBINATIONS ARE POSSIBLE.

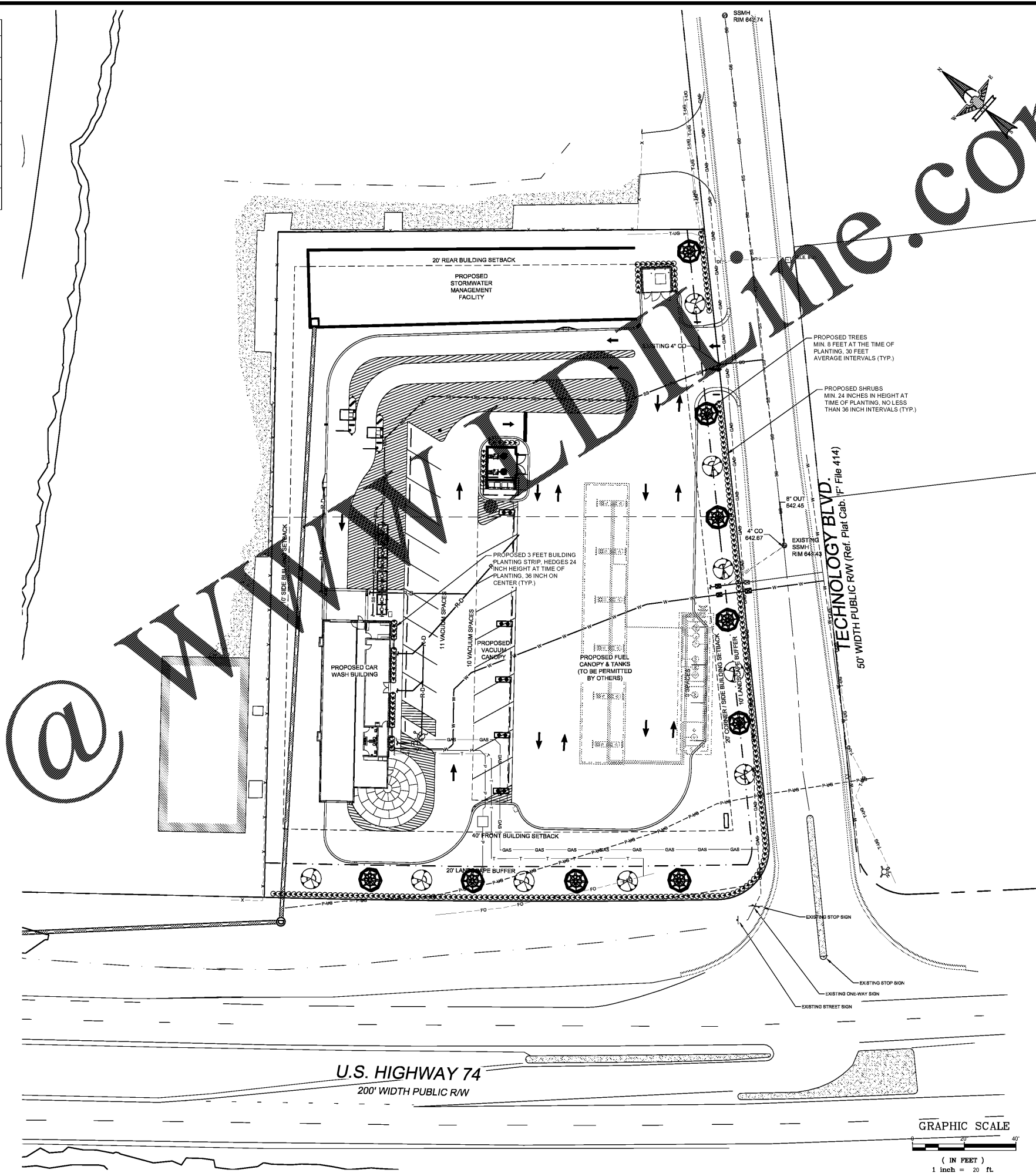
***TEMPORARY-RESEED ACCORDING TO OPTIMUM SEASON FOR DESIRED PERMANENT VEGETATION. DO NOT ALLOW TEMPORARY COVER TO GROW OVER 12" IN HEIGHT BEFORE MOVING. OTHERWISE FESCUE MAY BE SHADDED OUT.

QUANTITIES

QUANTITIES SHOWN IN LIST ARE FOR THE CONVENIENCE OF CONTRACTORS AND BELIEVED TO BE SUBSTANTIALLY CORRECT, BUT THE ACCURACY OF QUANTITIES IN LIST ARE NOT GUARANTEED.

Call Before You Dig!!!
North Carolina One Call
1-800-632-4949
IT'S THE LAW
<http://www2.ncocc.org>

- THE CONTRACTOR SHALL VERIFY LOCATION AND ELEVATION OF ALL UNDERGROUND UTILITIES. THE LOCATION OF ALL EXISTING UTILITIES ARE NECESSARILY SHOWN ON THE PLANS AND WHERE SHOWN ARE ONLY APPROXIMATE. THE CONTRACTOR SHALL ON HIS INITIATIVE AND AT NO EXTRA COSTS HAVE LOCATED ALL UTILITIES, INCLUDING UTILITIES AS NECESSARY. NO CLAIMS FOR DAMAGES OR EXTRA COMPENSATION SHALL ACCRUE TO THE CONTRACTOR FROM THE CONTRACTOR'S NEGLIGENCE OR OTHER CONSTRUCTION OR FROM ANY DELAY DUE TO REMOVAL OR REARRANGEMENT OF THE SAME. THE CONTRACTOR SHALL BE RESPONSIBLE FOR ANY DAMAGE TO UNDERGROUND UTILITIES. THE CONTRACTOR IS RESPONSIBLE FOR CONTACTING ALL NON-SUBSCRIBING UTILITIES. THE CONTRACTOR(S) SHALL CONTACT NORTH CAROLINA ONE CALL AT 1-800-632-4949 FOR ASSISTANCE IN LOCATING EXISTING UTILITIES. CALL AT LEAST 48 HOURS PRIOR TO ANY DIGGING.
- ENTIRE SITE SHALL BE SODDED UNLESS SPECIFIED ON PLAN OR REQUESTED BY CONSTRUCTION MANAGER FOR USE OF LOCALLY ADAPTED SPECIES.
- THE GENERAL CONTRACTOR SHALL LEAVE THIS SITE AT 6" FROM FINISHED GRADE. THE LANDSCAPE CONTRACTOR SHALL REVISE GRADIES AT A MINIMUM TO ENSURE SMOOTH TRANSITIONS BETWEEN PLANTING BEDS AND LAWN AREAS.
- PLANT GUARANTEE: ALL PLANTS SHALL BE GUARANTEED TO LIVE FOR TWELVE MONTHS. THE GUARANTEE SHALL COMMENCE UPON FINAL ACCEPTANCE OF THE PROJECT. IF ANY PLANTS ARE DEAD OR IN AN UNHEALTHY CONDITION BEFORE FINAL ACCEPTANCE, THE LANDSCAPE CONTRACTOR SHALL REPLACE DEAD OR DYING PLANT MATERIAL AT HIS EXPENSE. THIS REPLACEMENT SHALL NOT BE CONSIDERED A GUARANTEED REPLACEMENT.
- ALL PLANTING SHALL BE PLACED WITHIN A MULCHED PLANTING BED WITH STRAPERS AND THE TOP 2/3 OF WIRE BASKETS MUST BE CUT AWAY AND REMOVED FROM ROOT BALLS PRIOR TO BACKFILLING PLANTING PIT. REMOVE TOP 1/2 OF MULCH FROM ROOT BALLS.
- ALL LANDSCAPE WORK SHALL BE IN ACCORDANCE WITH CURRENT CITY STANDARD DETAILS AND SPECIFICATIONS.
- ALL AREAS NOT MULCHED SHALL BE SEEDED OR SODDED IN ACCORDANCE WITH THE AREA SPECIFIED ON PLANS WITH GRASS SPECIES RECOMMENDED FOR REGION AS PRESCRIBED IN THE SEEDING SCHEDULE AS SHOWN ON THIS SHEET.
- SITE LIGHTING SHALL NOT BE PLACED IN CONFLICT WITH PLANTED TREES.
- TREE PROTECTION FENCING TO BE PROVIDED AROUND TREE OBSERVATION AREAS IN ACCORDANCE WITH CITY STANDARDS.
- COORDINATE ALL WORK WITH THE LAYOUT OF THE GRADING, DRAINAGE & UTILITIES PLAN.
- MULCH ALL AREAS THAT ARE NOT SEEDED OR SODDED, WITH SHREDDED HARDWOOD MULCH OR APPROVED EQUAL AS SPECIFIED TO A DEPTH OF 3"-4".
- THE SELECTION AND INSTALLATION OF PLANTS AND PLANTING METHODS SHALL CONFORM WITH THE STANDARDS OF THE AMERICAN ASSOCIATION OF NURSERYMEN OR THE CITY STANDARD DETAILS AND SPECIFICATIONS, WHICHEVER IS STRICTER.
- CONTRACTOR IS RESPONSIBLE FOR VERIFYING ALL QUANTITIES. DRAWINGS SHALL RULE OVER PLANT LISTS.
- SUBSTITUTIONS SHALL BE SUBMITTED TO ENGINEER FOR APPROVAL, PRIOR TO INSTALLATION, SUBSTITUTIONS MAY REQUIRE ADDITIONAL APPROVAL BY THE GOVERNING JURISDICTION.
- ALL LANDSCAPE SOIL AND FILL SHALL BE FREE FROM WEEDS, REFUSE, AND DEBRIS AT ALL TIMES.
- TREES AND LARGE SHRUBS SHALL BE ADEQUATELY SUPPORTED, AS NECESSARY, USING ARBORITE FOR GUY'S ON TREES. SUCH SUPPORTS SHALL BE DESIGNED SO AS TO PROTECT TREES AND SHRUBS FROM INJURY. TREES AND SHRUBS SHALL BE FASTENED TO THE SUPPORT WITH AN ACCEPTABLE COMMERCIAL TREE TIE OF PLASTIC OR HOSE COVERED WIRE.
- CONTRACTOR SHALL RAKE OUT ALL STONES IN LANDSCAPE AREAS PRIOR SEEDING/SODDING OR PLANTING.



ENGINEERING

SSMH
RIM 842.74

2013A Van Buren Avenue
Indian Trail, NC 28079
(704) 882-4222
www.egplonline.net

FIRM LICENSE # C-0873
P.O. BOX 551
Alpharetta, GA 30009
(770) 339-0640

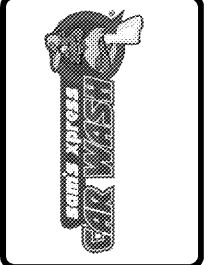
SEAL

14959

ENGINEER

HOUSTON, TEXAS

NO.	DATE	BY	REVISION



SAM'S XPRESS CAR WASH
TECHNOLOGY DRIVE
INDIAN TRAIL, NC

SAM'S REAL ESTATE
7935 COUNCIL PLACE, SUITE 102
MATTHEWS, NC 28105

LANDSCAPE PLAN

DESIGNED BY	DRAWN BY	CHECKED BY	JHR
JLR	JAR	JHR	JHR
SCALE	DATE	JOB NUMBER	5658
AS SHOWN	07/05/17		

Sheet
C-3.0